

Humane Community

Development:

An “Inside-out” Approach to Dog Population Management in Bosnia and Herzegovina

Sonja van Tichelen

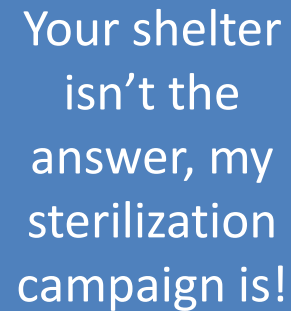
EU Regional Director

International Fund for Animal Welfare (IFAW)

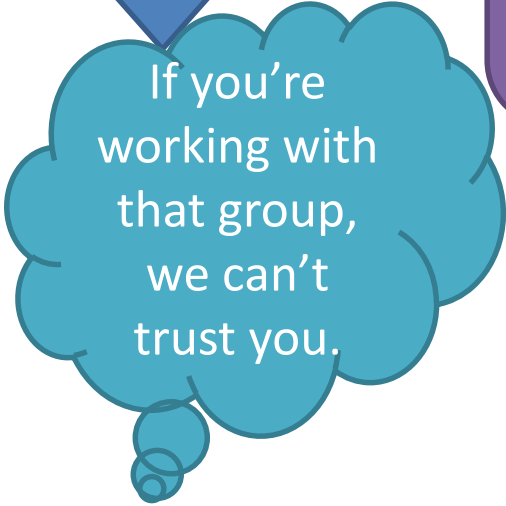
7 June 2016

Challenges to sustainable, effective DPM

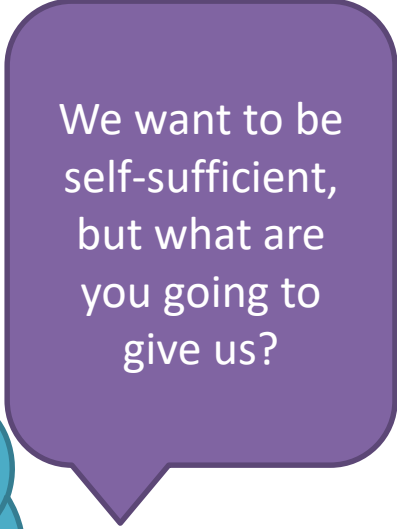
- Passionate disagreement
- Mistrust between NGOs and governments
- Lack of funding and dependency on external aid
- Simple answers to complex issues
- Local solutions needed



Your shelter isn't the answer, my sterilization campaign is!



If you're working with that group, we can't trust you.



We want to be self-sufficient, but what are you going to give us?

Frontiers in
PRA
 Participatory Rural Appraisal
PLA
 Participatory Learning and Action

PRA and PLA in Applied Research

AMITAVA MUKHERJEE



SHARING THE LOAD - using participatory tools to find sustainable solutions to animal welfare issues

Key Messages for Social Mobilization and Community Engagement in Intense Transmission Areas

September 2014



CONSERVATION BIOMIMICRY SPECIALIST GROUP
 14 SEPTEMBER 2014

cheetah PHVA

16.09.2014
 17.09.2014
 18.09.2014

TED HOWARD G. BUFFETT
 DE BEERS
 THE GUYTON

LEADERSHIP FOR A NEW ERA: "HOW TO" SERIES | SEPTEMBER 2012

Leadership & Collective Impact

A GUIDE FOR STRENGTHENING THE IMPACT OF YOUR LEADERSHIP DEVELOPMENT WORK

Humane Community Development



Local partner in Bosnia and Herzegovina

Local partner is necessary to ensure local tailoring, mentoring and communication



Stakeholder groups

teachers
ICRC breeders
farmers rescuers
police veterans
disabled
elderly hunters
hoarders nurses
municipality



**Phase 1:
Community
assessment and
stakeholder
engagement**

**Phase 2:
Building a
Humane
Community
workshop**

Data Collection

**Phase 2:
Humane
Community
Action Planning
workshop**

First year

Second year

Building A Humane Community Workshop

- Being heard, sharing perspectives
- Root cause exploration
- Test assumptions and dispel myths
- Commitment to proceed



Community Data Collection



Action Planning Workshop

- Review group accomplishments
- Share community data
- Prioritize problems
- Identify practical solutions





**Phase 3:
Community plan
refinement and
finalization**

**Phase 3:
Startup grants
and HCD project
launch**

Project in action

**Phase 4:
Share and Learn
Monitoring and
Adapting
workshop**

Second Year

Third Year

“That’s neat. So when do you start sterilizing the dogs?”

“That’s neat. So when do you start sterilizing the dogs?”

- ✘ Stakeholder meetings to present our own views and solutions

“That’s neat. So when do you start sterilizing the dogs?”

- ✘ Stakeholder meetings to present our own views and solutions
- ✘ **Capacity building of skills we identified in advance**

“That’s neat. So when do you start sterilizing the dogs?”

- ✘ Stakeholder meetings to present our own views and solutions
- ✘ Capacity building of skills we identified in advance
- ✘ **A really complicated granting scheme**

“That’s neat. So when do you start sterilizing the dogs?”

- ✘ Stakeholder meetings to present our own views and solutions
- ✘ Capacity building of skills we identified in advance
- ✘ A really complicated granting scheme
- A framework that builds the understanding, interpersonal relationships and commitment in the community necessary to maintain a humane dog management strategy**

Ongoing projects

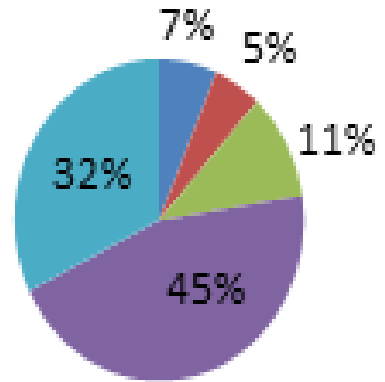
Bosnia

- Lopare: *End Year 1 implementation*
- Sanski Most: *Implementation*
- Jajce: *Implementation*
- Gradacac: *Implementation*
- Kljuc: *Workshop phase 2*
- Mrkonjic Grad: *Workshop phase 2*
- Trebinje: *Workshop phase 2*

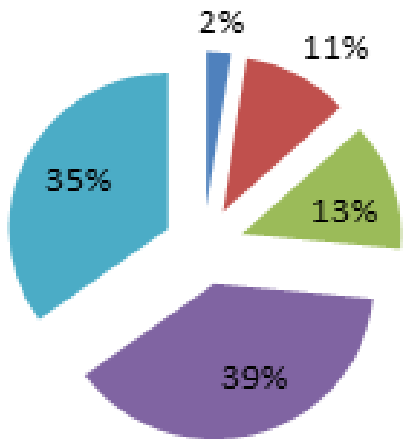


Compared to before the workshop, have your ideas changed about the problems with dogs? (n=83)

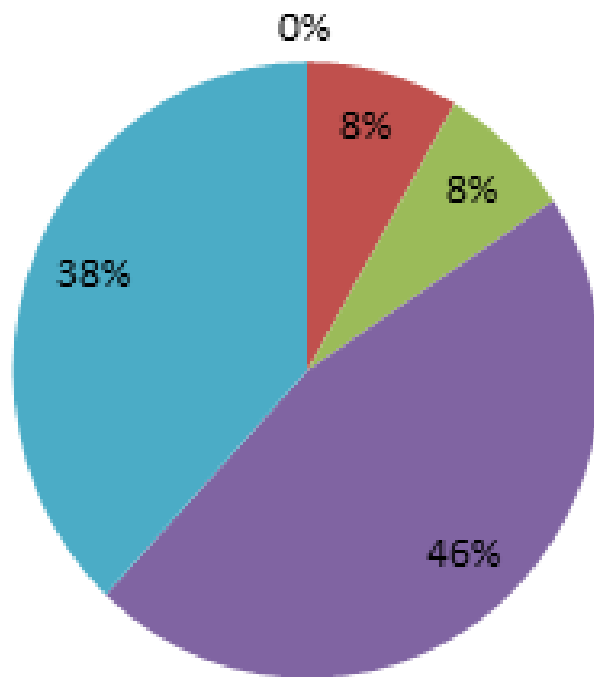
■ No change ■ A little change ■ Some change ■ A lot of change ■ Entirely new perspective



Compared to before the workshop, have your ideas changed about what needs to be done? (n=83)



How much confidence do you have that that the community will be able to improve the situation with dogs? (n=108)



- 1 – Things will probably not improve
- 2 – Improvements are possible but not likely
- 3 – improvements are possible, and may happen
- 4– improvements are possible, and probably will happen
- 5 – I really think things will improve

Results: Strategies



The plan: Lopare

Goals

- Reduce dog attacks
- Improve care for dogs



Actions

- Creating the 'hygiene service': Firefighters
- Community dog sterilization
- Education and outreach
- Formation of "Happy Dogs" citizens' group

Outcomes

- Over 900 dogs have already been treated or sterilized by local vets in upgraded facilities
- Over 1700 children have been engaged in education programs
- Over 265 participants representing diverse gender, age and status demographics have participated in the HCD process, including a wide array of local stakeholder groups

Additional outcomes

- Emergence of local leadership
- Humane values
- Less blaming of the government; more community accountability
- Different viewpoints no longer a stumbling block for finding solutions



Key Learning



Success lies in the energy and relationships between people. Relationships within the community, not with an outside agency, are the ones that matter most for long-term success.

Next steps

- Expansion within Bosnia as resources allow
- Creation of local networks and train-the-trainer approach for local coordinators in Bosnia
- Training program for new HCD mentors in process – end 2017

