



GF-TADs

GLOBAL FRAMEWORK FOR THE
PROGRESSIVE CONTROL OF
TRANSBOUNDARY ANIMAL DISEASES



**Standing Group of Experts on Lumpy Skin Disease
in Europe**
under the GF-TADs umbrella

Second meeting (LSD2)
Lisbon, Portugal, 22 September 2016

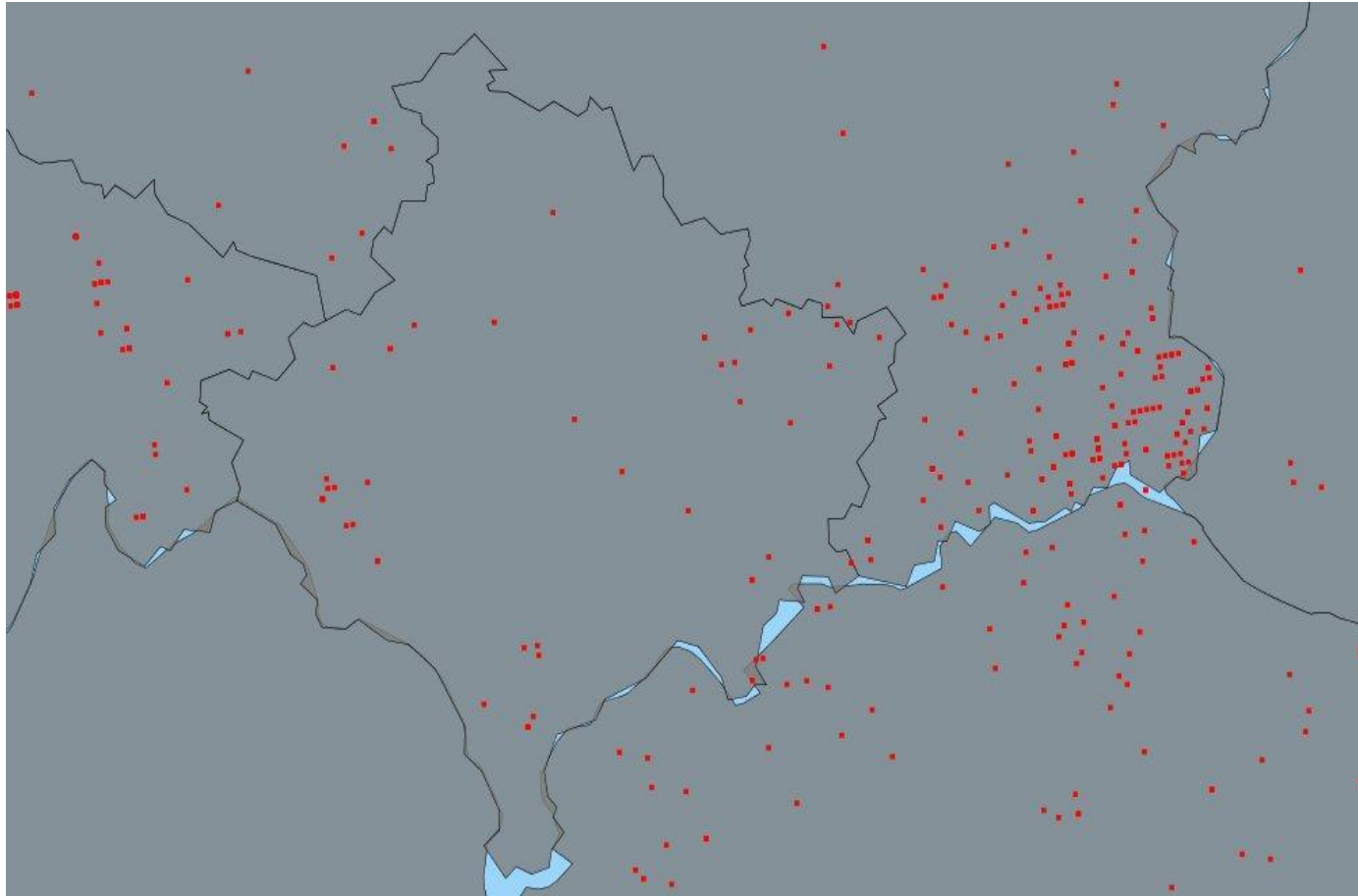
KOSOVO Report
Dr. Valdet Gjinovci

National LSD situation

Detailed map with 2016 outbreaks and vaccinated/non vaccinated zones



Specific challenges met since the LSD1?



Standing Group of Experts on LSD in Europe under the GF-TADs umbrella

Specific challenges met since the LSD1?

- LSD entered Kosovo in Jun 2016
- It spread across the territory in 3-4 weeks
- All parts are now infected
- Control by stamping out has been shown to not work in other countries in the region
- LSD likely to become endemic
- Vaccination is essential in Kosovo



Specific challenges met since the LSD1?

- EU donated 25,000 vaccine doses which were applied in late June, vaccination from EU donation.
- Cost benefit analysis clearly showed that mass vaccination produces a clear overall benefit
- Kosovo government take decision to support mass vaccination on 25 – Aug, agreed to fund the supply and administration of 235,000 vaccine doses
- Vaccine arrived in Kosovo on 15-Sep-16 and was distributed to PVPs on 16-Sep-16
- Mass vaccination commenced on 16 – Sep – 06 Oct
- Expected to be completed in 2-3 weeks



Specific challenges met since the LSD1?

- Future vaccination policy to be decided
- Government funded or private ?
- Criteria developed for this decision by KAHL project
- If LSD does not meet these criteria, then provision of vaccination is a subsidy to farmers
- If government provides vaccine, when does it stop? What is the exit strategy
- If a regional program of control/eradication is established, then government involvement may be justified



Specific challenges met since the LSD1?

- Criteria for government involvement in control programs
- Is there a human health risk ?
- Is there a threat to national food security ?
- Is there a nationally significant threat to trade in livestock or livestock products ?
- Is there a nationally serious threat to livestock production that farmers/vets cannot control without government resources ?
- Is there a significant threat to the livelihoods of specific groups of poor farmers ?
- Does inaction or inappropriate action by some farmers create a serious problem for other farmers ?
- Is there a regional control program or an EU requirement for control ?



Specific challenges met since the LSD1?

Thank you for your attention



Standing Group of Experts on LSD in Europe under the GF-TADs umbrella