

Country experience-United Kingdom

Совместный онлайн семинар для уполномоченных органов в области ветеринарии государств-членов ЕАЭС на тему “Стандарты и рекомендации ВОЗЖ по губчатой энцефалопатии крупного рогатого скота: обновление Кодекса здоровья наземных животных”

A joint online seminar for veterinary authorities of the EAEU member-states on the topic " WOAH standards and recommendations on Bovine Spongiform Encephalopathy: Terrestrial Animal Health Code update."

Dr Raquel Cobos
WOAH portfolio and UK WOAH
Focal Point for Animal Disease
Notification

26 июня 2026 года, 10:00
по московскому времени
26 June 2026, 10:00
Moscow time



World
Organisation
for Animal
Health

Organisation
mondiale
de la santé
animale

Organización
Mundial
de Sanidad
Animal

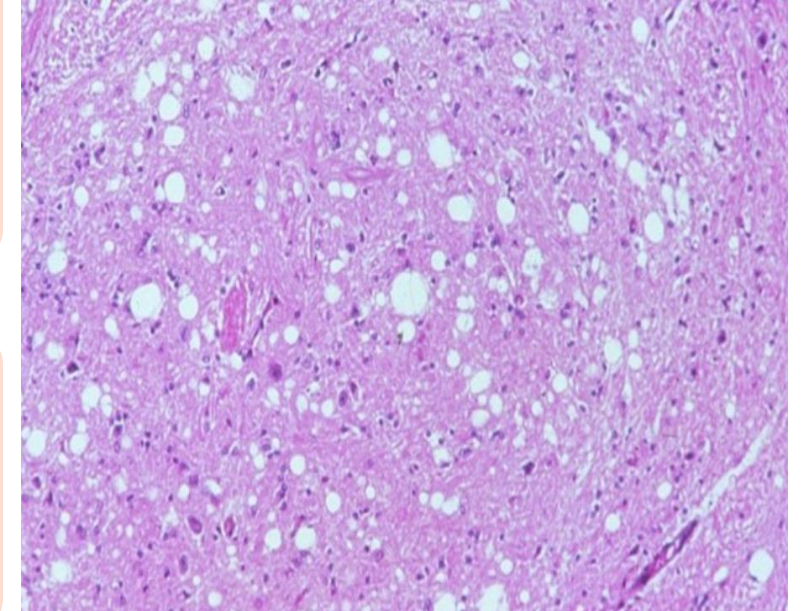


EURASIAN ECONOMIC
COMMISSION

What is BSE and why it matters



A Transmissible Spongiform Encephalopathy (TSE) - family of neurological diseases



It includes two forms of the disease:

- Classical BSE
- Atypical BSE

Understanding the UK epidemic

First detected in UK – 1986

Peak in early 1990s (~36,000 cases/year)

Rapid development of precautionary measures

Major impact on confidence and trade

Now epidemiological position = BSE Negligible Risk lowest risk level

Early phase: uncertainty and learning

Novel disease with limited evidence

Initial uncertainty in transmission pathways

Progressive scientific understanding

Early precautionary measures

Development of international standards



Identifying and breaking transmission

- Key transmission pathway identified: feed-> meat and bone meal (MBM)
- 1988-Ban on MBM
- Removal of affected animals from food chain
- Measures aligned progressively with science
- UK leadership: Developed rapid, reliable diagnostics



UK control measures

BSE is notifiable a diseases in the UK

Ban on feeding animal protein to ruminants

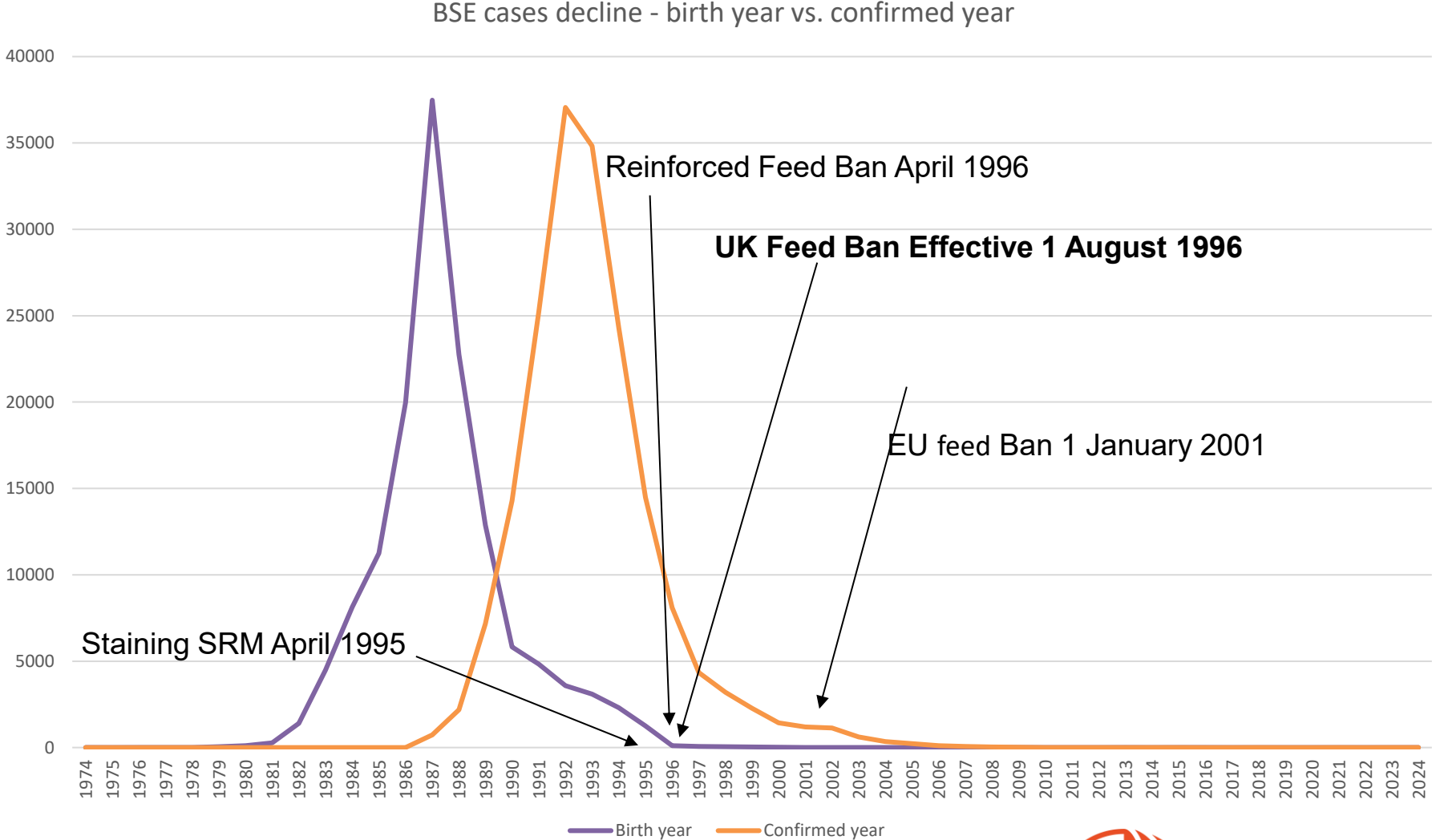
Disposing of Specified Risk Material (SRM) - the parts of an animal most likely to contain any BSE infection if the animal is infected

Cattle born before feed controls reinforced are excluded from food and feed chain including export.

Passive & active surveillance - Testing of cattle for BSE

Suspicion of BSE and controls on confirmation. Cohorts and offspring management.

BSE in UK- Timeline



From control to confidence

- Long-standing Controlled Risk status
- Evidence-based WOAHP dossier submission
- Demonstrated feed controls and elimination of transmission pathway
- Extensive surveillance and testing over time showing very low incidence
- Robust traceability and cohort management systems

Role of WOHAH Standards



Framework for harmonisation and transparency



Enables recognition through evidence



Supports trust and safe trade

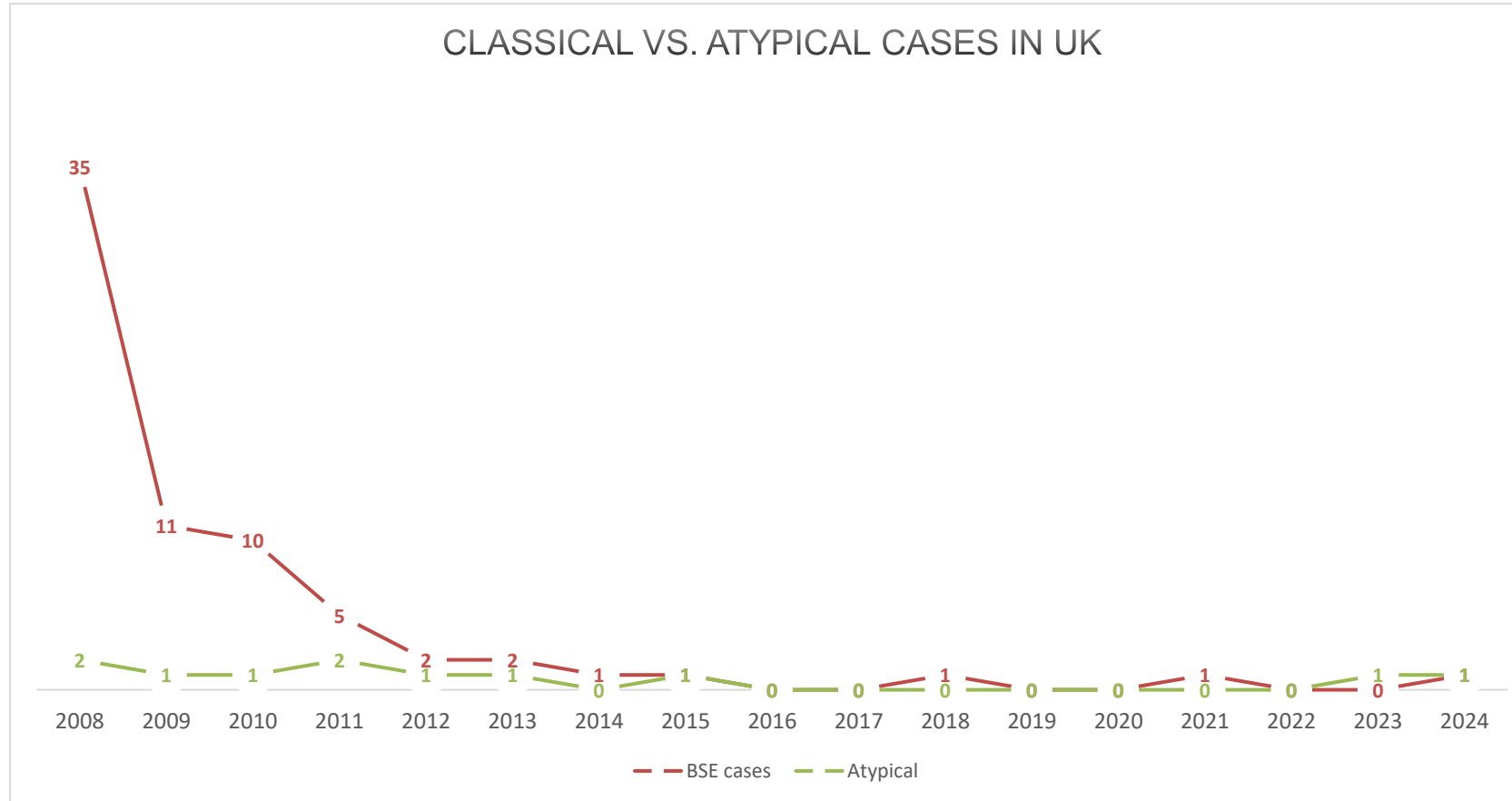


UK- From Controlled Risk to Negligible Risk



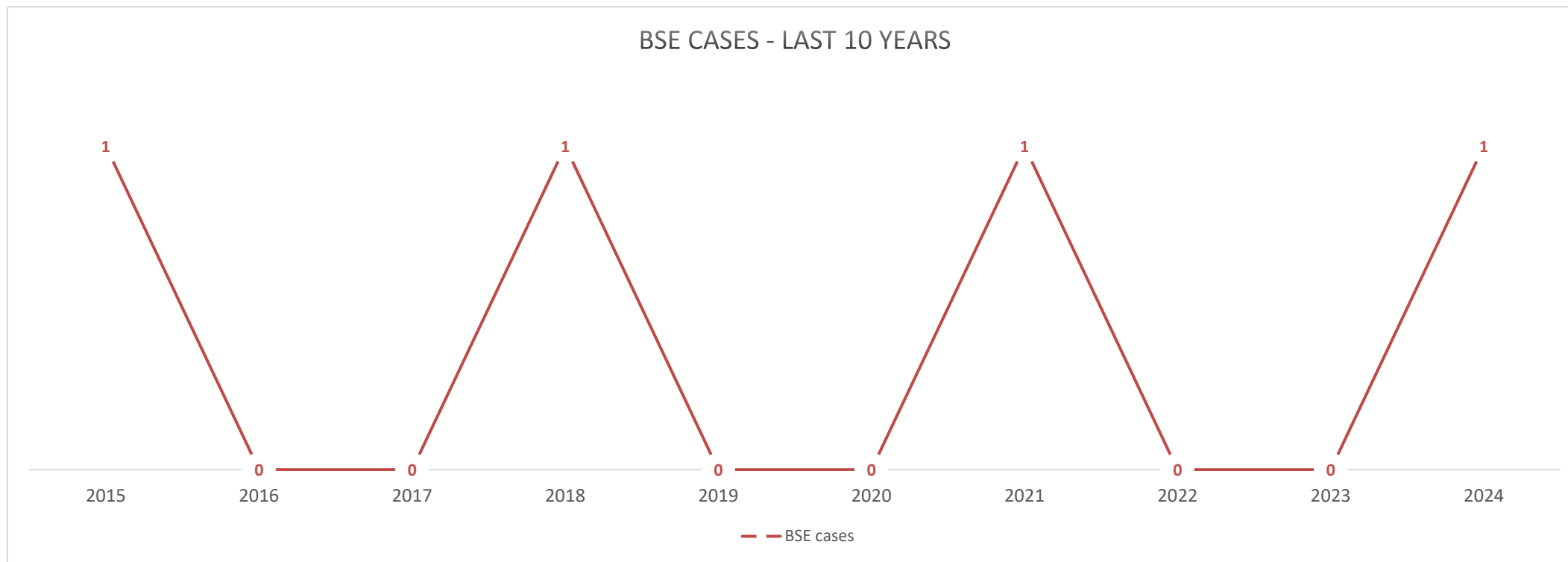
BSE Cases in the last 17 years

- Tail end of the BSE epidemic



Cases vs. number of cattle - last 10 years

- **Tail end of the BSE epidemic**



Key lessons



Systems must adapt as knowledge evolves



Importance of scanning Surveillance and Veterinary Risk Groups



Long-term consistency is essential



Cross-sector collaboration (One Health)

Conclusion



Science-based, coordinated action can successfully control BSE



Strong systems and international standards underpin confidence



Not only a past crisis, but a model for future risk management

СПАСИБО ЗА ВНИМАНИЕ!

Thank You!



World
Organisation
for Animal
Health

Organisation
mondiale
de la santé
animale

Organización
Mundial
de Sanidad
Animal