

Revision of BSE Standards: Background and rationale

The new BSE Chapter in the *Terrestrial Animal Health Code*

Impact of new requirements on Members with a status

Совместный онлайн семинар для уполномоченных органов в области ветеринарии государств-членов ЕАЭС на тему “Стандарты и рекомендации ВОЗЖ по губчатой энцефалопатии крупного рогатого скота: обновление Кодекса здоровья наземных животных”

A joint online seminar for veterinary authorities of the EAEU member-states on the topic "WOAH standards and recommendations on Bovine Spongiform Encephalopathy: Terrestrial Animal Health Code update."

26 июня 2026 года, 10:00

по московскому времени

26 June 2026, 10:00

Moscow time

**Angel Ortiz-Pelaez
Natalie Moyen**



World
Organisation
for Animal
Health

Organisation
mondiale
de la santé
animale

Organización
Mundial
de Sanidad
Animal



EURASIAN ECONOMIC
COMMISSION

Content

- **History of BSE provisions in the Manual**
- **Why to change?**
- **Rationale of the new Chapter 11.4**
- **Main principles**
- **New provisions: Risk assessment**
- **Impact of new requirements on Members with a status**

History in the Code

- In the *Terrestrial Code* since 1998.
- Evolution: new scientific evidence and epidemiological situation
- **1998-2005**
 - ✓ risk analysis
 - ✓ free/provisionally free/low/high incidence country
 - ✓ minimum sample size: clinical
- **2005-2023**
 - ✓ Release-entry/exposure assessment
 - ✓ negligible/controlled/undetermined risk
 - ✓ Surveillance type A (1:100,000)/type B (1:50,000). Score-point system

Why to change

- Standards not appropriate to the BSE risk
- Priority for WOA and its Members
- Incidence and global importance of classical BSE decreased
- Consideration of atypical BSE
- Standards pre-2023:
 - ✓ implementation of appropriate measures
 - ✓ No consideration of husbandry, farming...
 - ✓ Surveillance obsolete
 - ✓ Penalize countries with cases

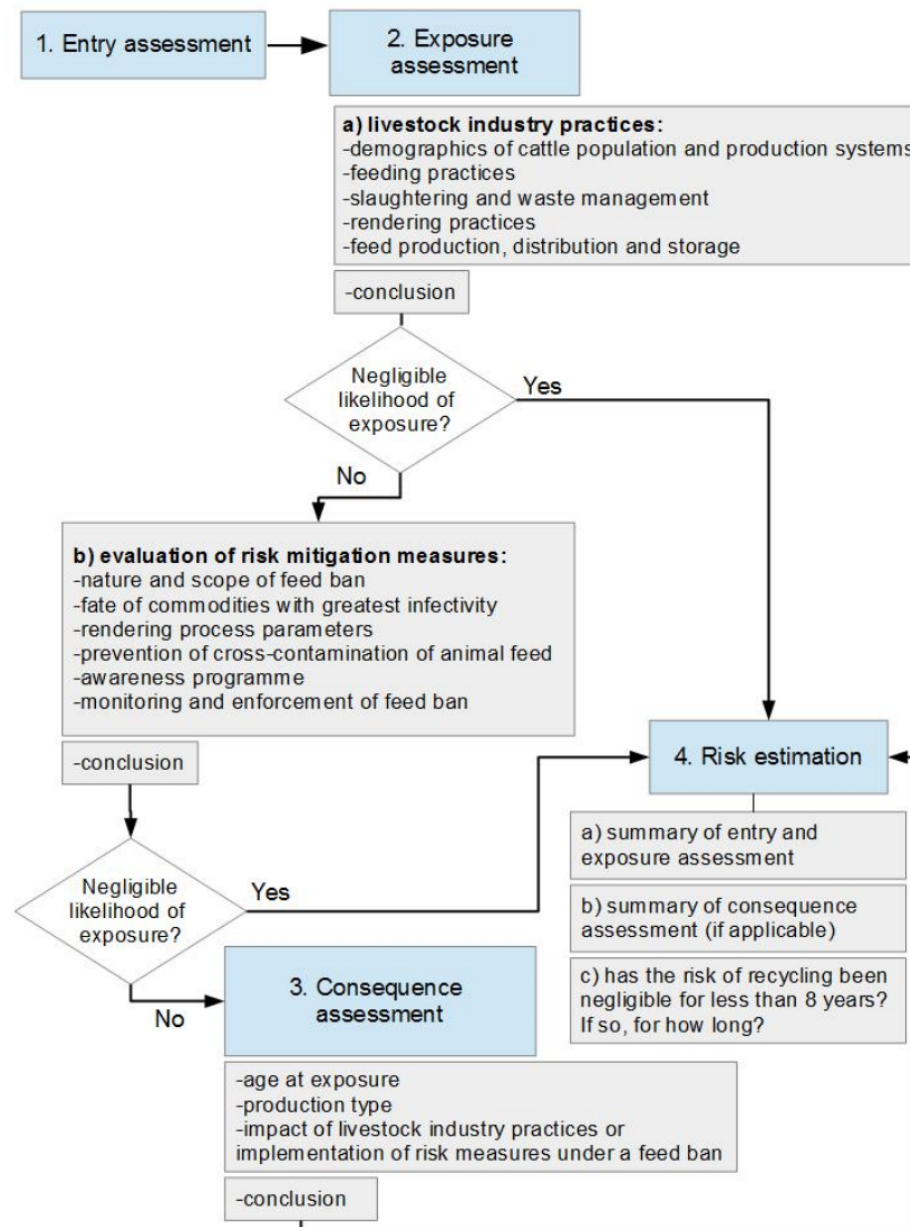
New principles

- Atypical BSE is acknowledged for the first time
- More emphasis on risk assessment. Members are their own risk assessors
- Status based on risk assessment and demonstration system is in place
- Entry and exposure assessment: previous 8 years
- Status does not require preconditions like the feed ban
- Protein meal. Ruminant protein meal not for ruminants
- The confirmation of a case does not determine automatically the change in status
- Surveillance is part of the risk assessment
- Surveillance framework. Protocols to be designed and justified by the country

New provisions: risk assessment

- The occurrence of a case of BSE is defined by the detection of the classical BSE agent.
Atypical BSE is acknowledged
- Article 11.4.3. Status based on
 - 1. BSE risk assessment.** : “...evaluates the risk of the classical BSE agent being recycled within the bovine population by identifying all potential factors associated...”
 - ✓ Entry assessment
 - ✓ Exposure assessment
 - ✓ Consequence assessment
 - ✓ Risk estimation
 - 2. Surveillance programme**
 - 3. History of occurrence and management of cases of BSE (incl. atypical)**

New provisions: risk assessment



New provisions: risk assessment

- The presence of C-BSE cases does not determine the status as such...as long as managed (Article 11.4.8.)

- **Article 11.4.4. Negligible risk:**
 1. Risk assessment: documented evidence that any identified risk factors have been adequately managed and that the risk of the classical BSE agent being recycled:
 - Livestock industry practices
 - Effective and continuous risk mitigation measures
 2. Surveillance
 3. No cases or imported/born before risk of recycling negligible or investigation
 4. Any cases of BSE detected and destroyed

- **Article 11.4.5. Controlled risk:**

All of the conditions of Article 11.4.4. are met, but one or more of these conditions has not been met for the preceding 8 years

New provisions: risk assessment

Article 1.8. Application for official recognition by WOAHP of risk status for bovine spongiform encephalopathy

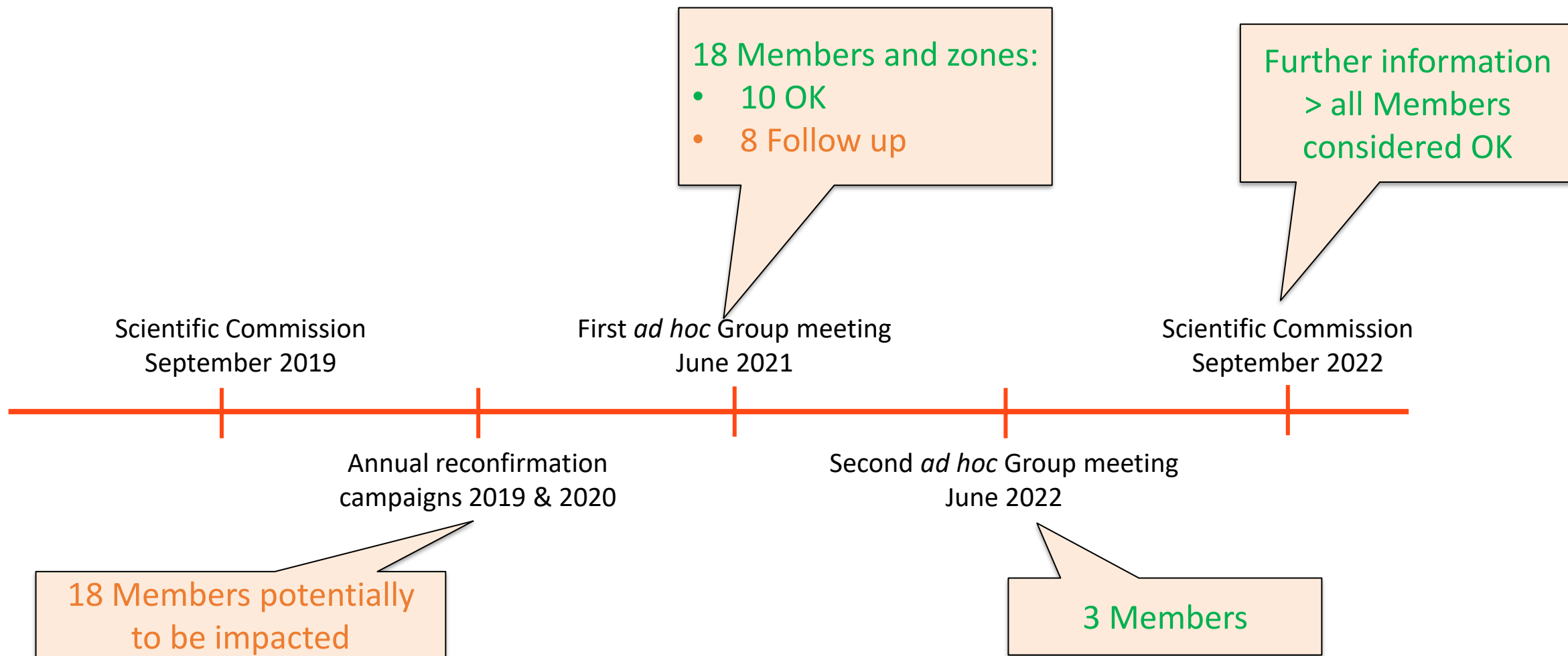
Core document:

- Legislation
- Veterinary system
- BSE risk assessment
 - ✓ Entry assessment: commodities
 - ✓ Exposure assessment: livestock industry practices, risk mitigation
 - ✓ Consequence assessment: likelihood of new infections, recycling and amplification
 - ✓ Risk estimation
- BSE surveillance
- the history of occurrence and management of BSE in the country or zone.

Impact of new requirements on Members with a status

- Past provisions of Article 11.4.2. point 1. b) of the *Terrestrial Code*, an exposure assessment should be conducted if a risk factor is identified at the entry assessment.
- Members were granted an official BSE risk status based on a negligible risk of entry despite a non-negligible exposure assessment.
- The new BSE provisions would require conducting an exposure assessment with demonstration of negligible risk of BSE agents being recycled in the cattle population, regardless of the outcome of the entry assessment.
- This requirement may have an impact on the BSE risk status of some Members already having an official status recognised by WOA.

Impact of new requirements on Members with a status



СПАСИБО ЗА ВНИМАНИЕ!

Thank You!



World
Organisation
for Animal
Health

Organisation
mondiale
de la santé
animale

Organización
Mundial
de Sanidad
Animal