

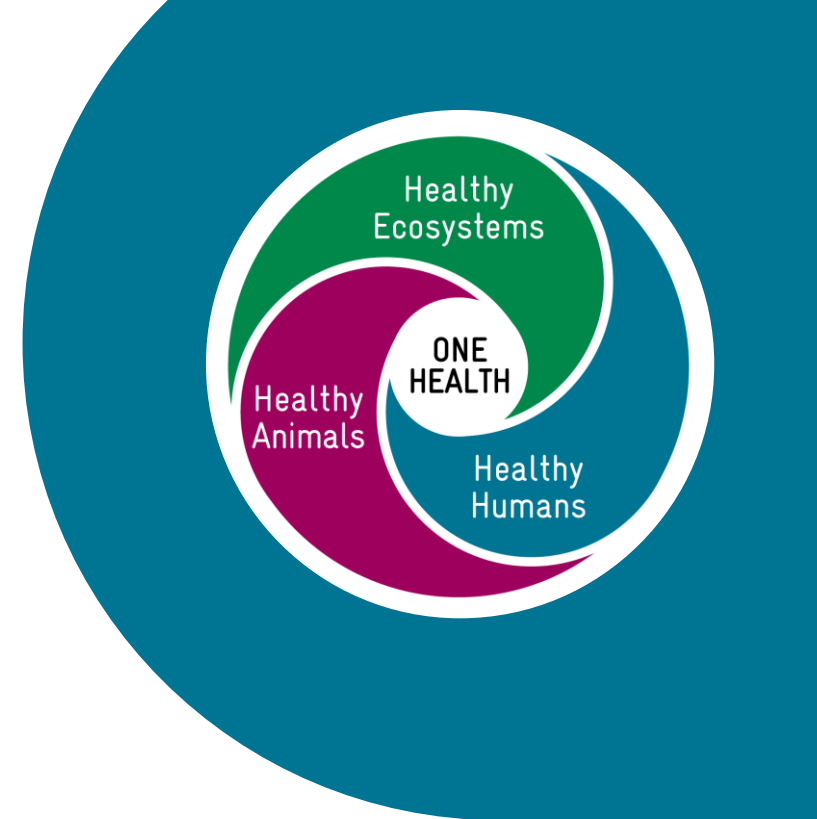


© giz

Towards Sustainable One Health Financing and Governance

Regional Workshop: Accelerating the Operationalisation of the One Health Joint Plan of Action in Veterinary Services

Panel: *To ensure sustainable financing of One Health activities* – 18.11.2025

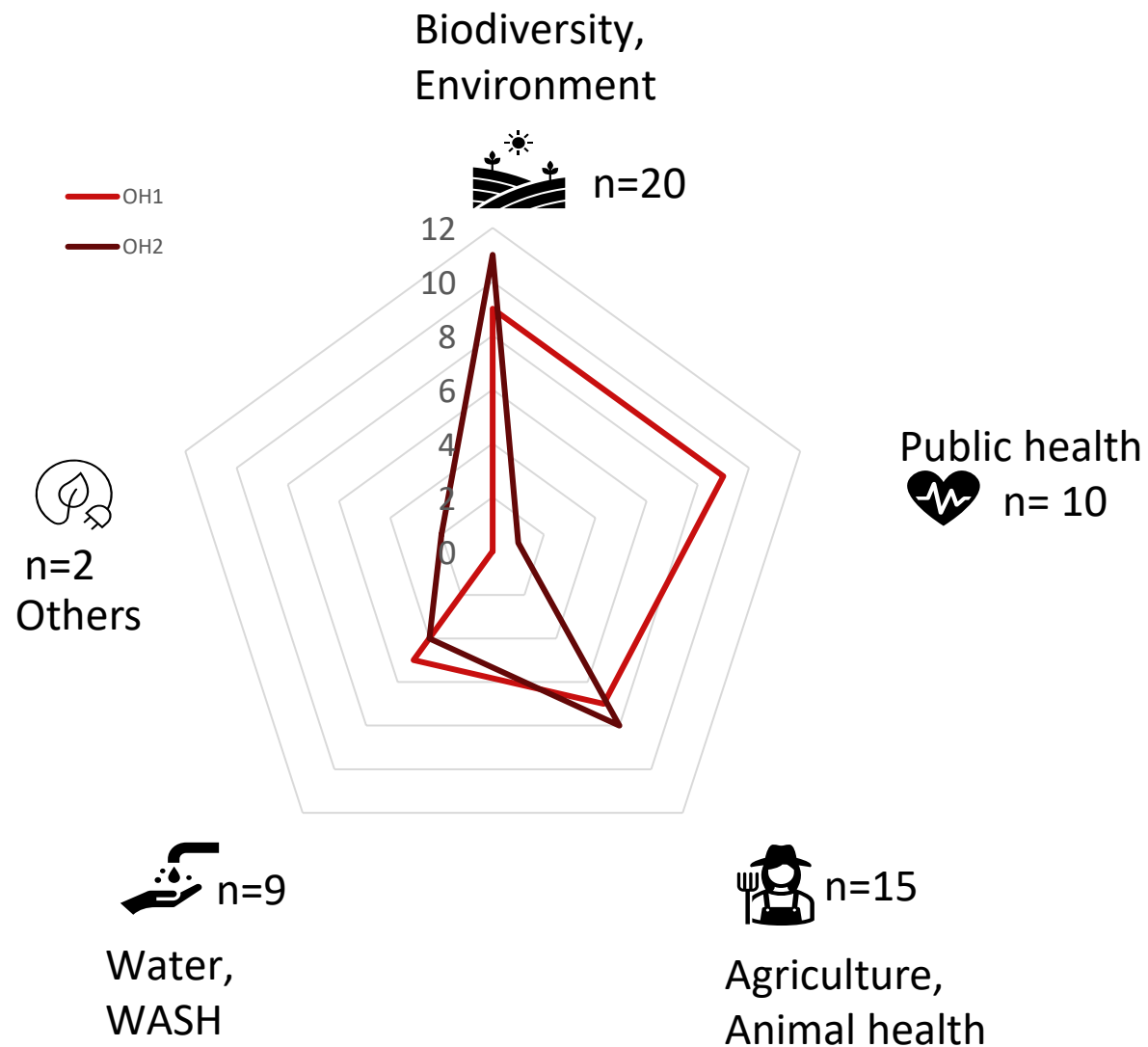


Nina Militzer, DVM, PhD

Advisor from GIZ's
Global Programme on Pandemic
Resilience, One Health (GP PROH)

giz Deutsche Gesellschaft
für Internationale
Zusammenarbeit (GIZ) GmbH

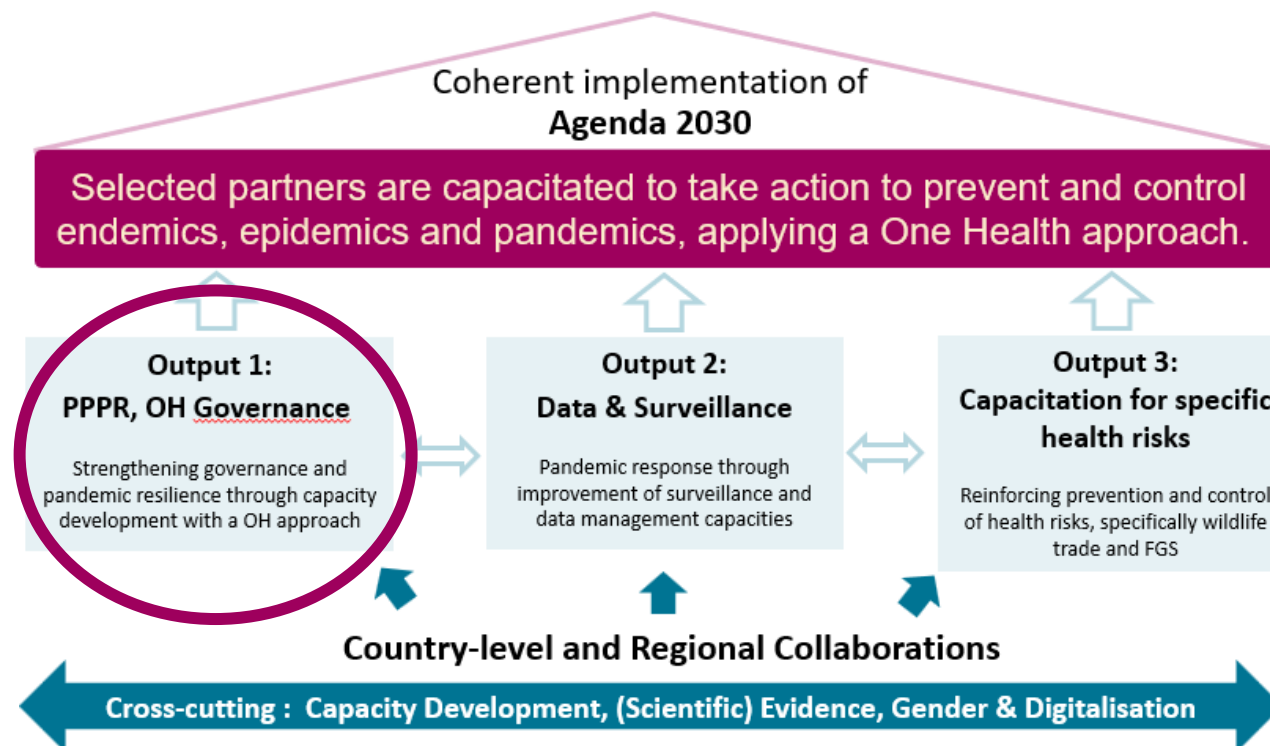
GIZ and One Health – our role and contribution



Cut off day
31.12.2024

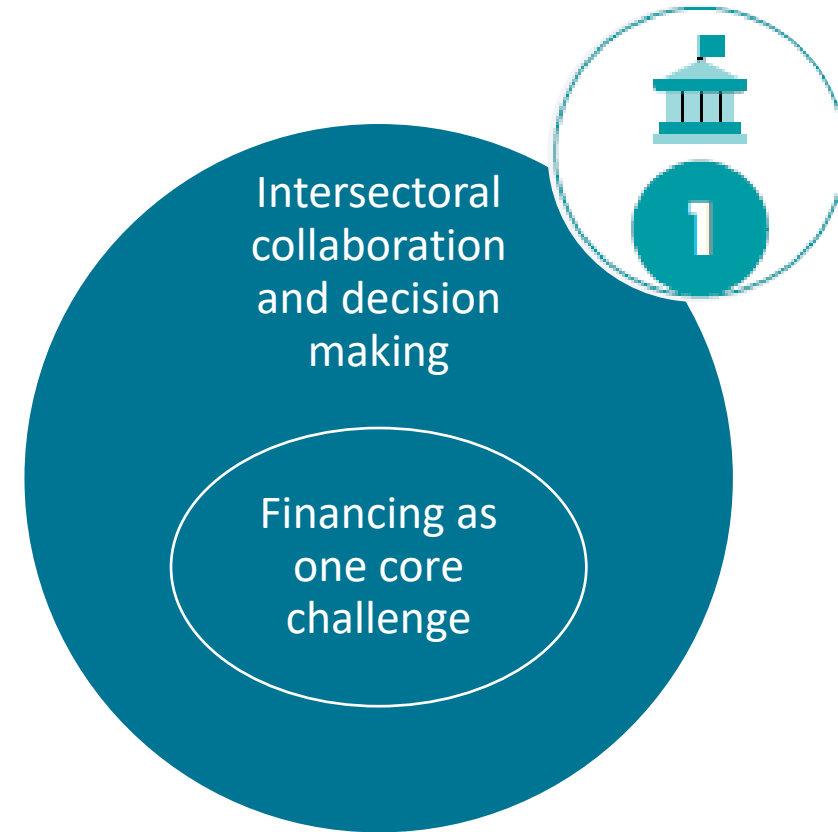
GIZ's Global Programme on Pandemic Resilience, One Health

- Commissioned by German Federal Ministry for Economic Cooperation and Development
- Previous phase: Global Programme on Pandemic Prevention and Response, One Health (2021-2024), 56.9 Mio Euro
- **New Global Programme phase: 2024-2027, 20.1 Mio Euro**



Example of challenges on One Health Governance from previous phase

- Challenging intersectoral collaboration (e.g. conflict of responsibilities, insufficient harmonization)
- High workload & efforts on coordination, collaboration and communication required
- Soft skills needed
- Structural challenges (e.g. incompatibility of data sources, lack of legal frameworks, equitable, appropriate **financing**):
 - Volume of dedicated or available financing (actual funding gaps vs. lack of staff time& in-kind efforts)
 - Ability to budget across sectors and to align external and domestic sources
 - Unequal sectoral contributions



One Health & PPPR Financing challenges

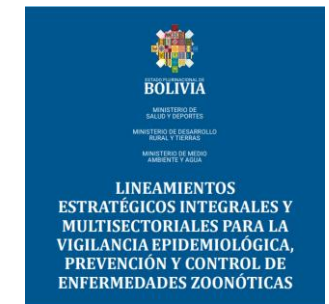
- Challenges:
 - Underinvestment in prevention
 - Fragmentation of resources
 - Limited integration of One Health priorities into existing national and sectoral budgets
- Needs:
 - Going beyond donor-driven initiatives
 - Embedding One Health into regular planning, budgeting and investment cycles of governments



[Quadripartite's Guide to implementing the One Health Joint Plan of Action at national level, 2023](#)

Case examples from the countries

- Cameroon:
 - Support to the application of the OH JPA to enrich the national One Health Action Plan (2024-2028)
 - Prime ministry guidance issued, government funding committed for three years, OH NAP informs national processes
 - Outlook: strengthening multisectoral & climate-sensitive budgeting and development of a joint One Health financing strategy
 - Close engagement with Ministry of Finance & Planning; economic evidence supports budget dialogues
- Co-financed One Health activities boost ownership (Bolivia); Costing transparency of activities for partner uptake (Cambodia)
- Private sector engagement: for instance with MoH, GIZ, pharmaceutical company → Corporate social responsibility, market leverage, innovation



Sustainable One Health & PPPR Financing – Key steps



Integration: Embed One Health priorities within national agricultural, environmental, and health budgets, ensuring joint planning among ministries.



Co-financing: Combine domestic funding with partner and private-sector resources, including public–private partnerships for e.g. surveillance, laboratories, and workforce development.



Institutionalization: Strengthen coordination bodies and clear (shared) responsibilities so that they have defined budget lines and mandates, not only ad-hoc project funding.



Evidence-based advocacy: Show-casing economic value / Return on Investment of One Health interventions




Ensure equitable financing for One Health!



These steps create a shift from reactive spending to preventive investment, which ultimately delivers better value for money



Optional: Discussion questions

- 
- How can national and regional One Health coordination mechanisms transition from project-based/short-term to institutionalised structures with stable budgets?
 - How can regional coordinating mechanisms support national/local stakeholders to better engage and find cost-efficient, incentivized One Health solutions?
 - How can veterinary authorities strengthen their role in national budget cycles and financing dialogues?
 - What tools do countries/partner need to better demonstrate the economic value of prevention and One Health interventions?



Thank you!

Contacts:

Nina Militzer (Nina.Militzer@giz.de)

Simin Schahbazi (Simin.Schahbazi@giz.de)

Sarah Mengesha (Sarah.Mengesha@giz.de)

**Deutsche Gesellschaft für
Internationale Zusammenarbeit (GIZ) GmbH**

Sitz der Gesellschaft
Bonn und Eschborn

Friedrich-Ebert-Allee 32 + 36
53113 Bonn, Deutschland
T +49 228 44 60 - 0
F +49 228 44 60 - 17 66

Dag-Hammarskjöld-Weg 1 - 5
65760 Eschborn, Deutschland
T +49 61 96 79 - 0
F +49 61 96 79 - 11 15

E info@giz.de
I www.giz.de