



Food and Agriculture
Organization of the
United Nations



World Organisation
for Animal Health
Founded as OIE



Funded by
the European Union

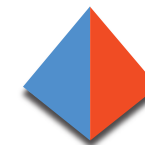
1st GF-TADs Regional Conference in the European region

FMD in Hungary

Szabolcs Pásztor

WOAH Delegate of Hungary

22-25, September, 2025, Belgrade, Serbia



GF-TADs

GLOBAL FRAMEWORK FOR THE
PROGRESSIVE CONTROL OF
TRANSBOUNDARY ANIMAL DISEASES



Food and Agriculture
Organization of the
United Nations

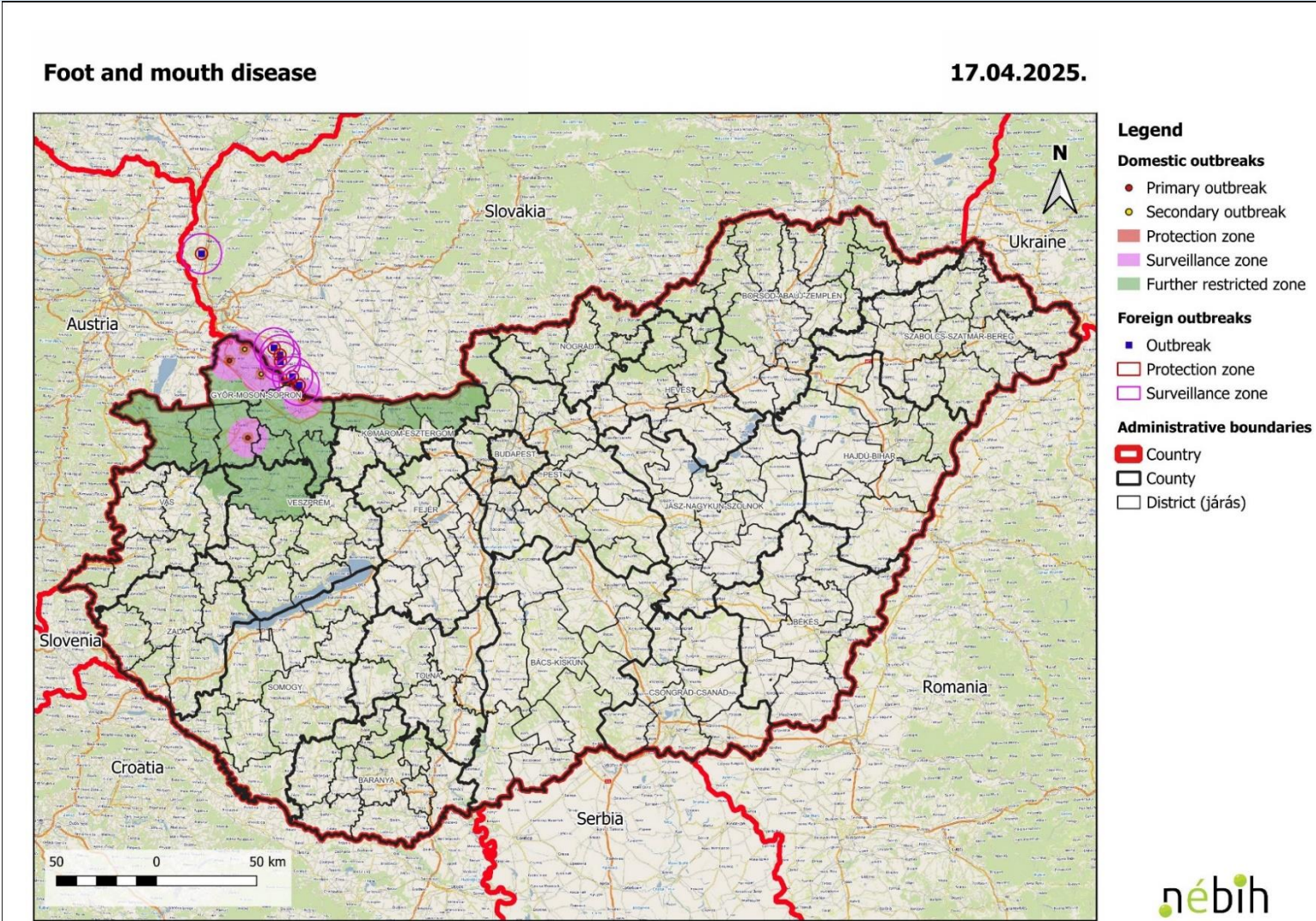


World Organisation
for Animal Health
Founded as OIE

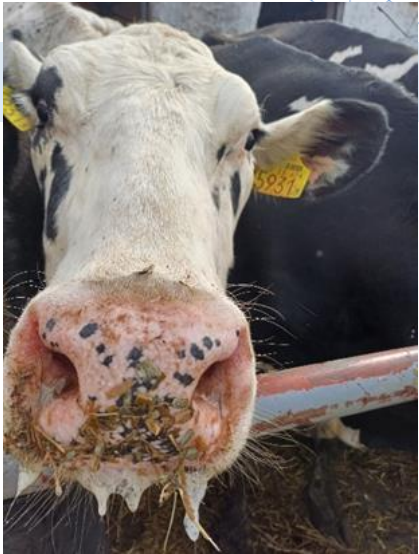
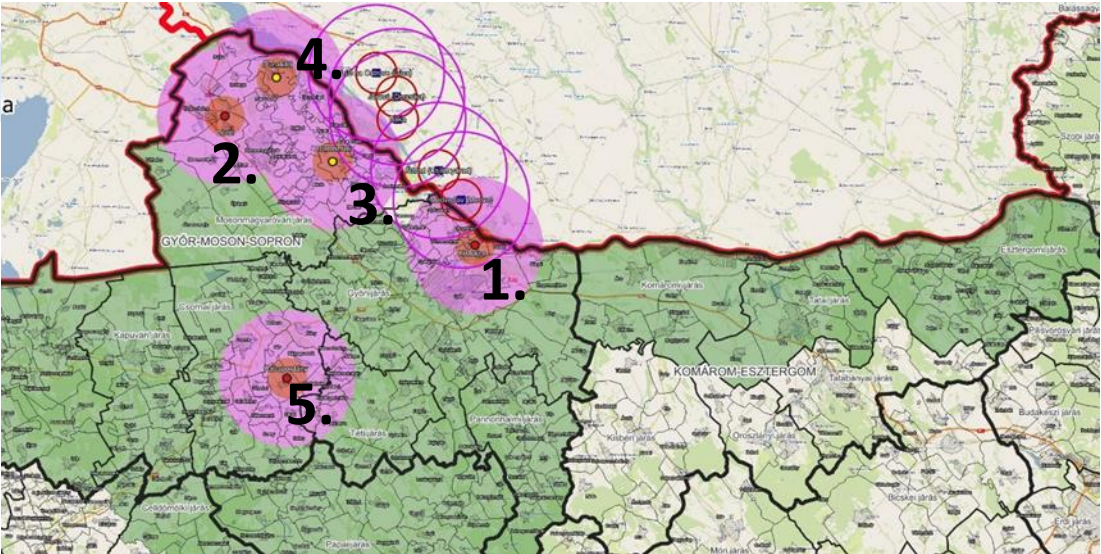
Summary

3 primary + 2 secondary outbreaks

	No. of affected animals (cattle/pig)
Outbreak holding 1. and its contact holding	1370 307
Outbreak holding 2. and its contact holding	2573 539
Outbreak holding 3.	1051
Outbreak holding 4.	2597
Outbreak holding 5. and its contact holding	875 9888
Total	9312 + 9888



Summary



All zones and restrictions have been lifted as of 6th June.
WOAH officially free status without vaccination restored as of 10th of September

Outbreak	suspicion date	confirmation date	suppressive vaccination	killing and disposal started	killing and disposal finished	preliminary C&D finished
1 – Kisbajcs	05.03.	06.03.	-	09.03.	13.03.	21.03.
2 – Levél	25.03.	26.03.	26.03.	30.03.	03.04.	14.04.
3 – Darnózseli	01.04.	02.04.	02.04.	08.04.	10.04.	16.04.
4 – Dunakiliti	01.04.	02.04.	02.04.	10.04.	11.04.	03.05.
5 – Rábapordány	17.04.	17.04.	17.04.	18.04.	19.04.	06.05.

<div>Surveillance</div> <div>Sampling whole country (as of 05.06.)</div> <div><div>PCR</div><div>55.927</div></div> <div><div>ELISA</div><div>206.009</div></div>		County	census	contact	suspicion	milk	immediate slaughter	commercial	additional	wild game
		Bács-Kiskun		1				4	313	1
		Baranya		1	1			4	133	
		Békés			2			20	48	
		Borsod-Abaúj-Zemplén			3			4	170	1
		Csongrád-Csanád		1	3			3	222	
		Fejér		1	3			4	68	86
		Győr-Moson-Sopron	510	36	8	31	91		17	3263
		Hajdú			1			26	145	1
		Heves			1				96	1
		Jász-Nagykun-Szolnok			2		1	7	217	
		Komárom-Esztergom		3	3	6	50	3	54	1237
		Nógrád			1				24	
		Pest		1	1			9	137	33
		Somogy			3			3	62	1
		Szabolcs-Szatmár-Bereg						6	42	1
		Tolna					1	1	55	
		Vas		4		2	4	2	96	134
		Veszprém		6	4	11	18	3	49	527
		Zala		3				5	64	
Total	510	57	36	50	165	104	2012	5286		

<div>Surveillance</div> <div>Sampling whole country (as of 05.06.)</div> <div><div>PCR</div><div>55.927</div></div> <div><div>ELISA</div><div>206.009</div></div>		County	census	contact	suspicion	milk	immediate slaughter	commercial	additional	wild game
		Bács-Kiskun		1				4	313	1
		Baranya		1	1			4	133	
		Békés			2			20	48	
		Borsod-Abaúj-Zemplén			3			4	170	1
		Csongrád-Csanád		1	3			3	222	
		Fejér		1	3			4	68	86
		Győr-Moson-Sopron	510	36	8	31	91		17	3263
		Hajdú			1			26	145	1
		Heves			1				96	1
		Jász-Nagykun-Szolnok			2		1	7	217	
		Komárom-Esztergom		3	3	6	50	3	54	1237
		Nógrád			1				24	
		Pest		1	1			9	137	33
		Somogy			3			3	62	1
		Szabolcs-Szatmár-Bereg						6	42	1
		Tolna					1	1	55	
		Vas		4		2	4	2	96	134
		Veszprém		6	4	11	18	3	49	527
		Zala		3				5	64	
Total	510	57	36	50	165	104	2012	5286		

<div>Surveillance</div> <div>Sampling whole country (as of 05.06.)</div> <div><div>PCR</div><div>55.927</div></div> <div><div>ELISA</div><div>206.009</div></div>		County	census	contact	suspicion	milk	immediate slaughter	commercial	additional	wild game
		Bács-Kiskun		1				4	313	1
		Baranya		1	1			4	133	
		Békés			2			20	48	
		Borsod-Abaúj-Zemplén			3			4	170	1
		Csongrád-Csanád		1	3			3	222	
		Fejér		1	3			4	68	86
		Győr-Moson-Sopron	510	36	8	31	91		17	3263
		Hajdú			1			26	145	1
		Heves			1				96	1
		Jász-Nagykun-Szolnok			2		1	7	217	
		Komárom-Esztergom		3	3	6	50	3	54	1237
		Nógrád			1				24	
		Pest		1	1			9	137	33
		Somogy			3			3	62	1
		Szabolcs-Szatmár-Bereg						6	42	1
		Tolna					1	1	55	
		Vas		4		2	4	2	96	134
		Veszprém		6	4	11	18	3	49	527
		Zala		3				5	64	
Total	510	57	36	50	165	104	2012	5286		

<div>Surveillance</div> <div>Sampling whole country (as of 05.06.)</div> <div><div>PCR</div><div>55.927</div></div> <div><div>ELISA</div><div>206.009</div></div>		County	census	contact	suspicion	milk	immediate slaughter	commercial	additional	wild game
		Bács-Kiskun		1				4	313	1
		Baranya		1	1			4	133	
		Békés			2			20	48	
		Borsod-Abaúj-Zemplén			3			4	170	1
		Csongrád-Csanád		1	3			3	222	
		Fejér		1	3			4	68	86
		Győr-Moson-Sopron	510	36	8	31	91		17	3263
		Hajdú			1			26	145	1
		Heves			1				96	1
		Jász-Nagykun-Szolnok			2		1	7	217	
		Komárom-Esztergom		3	3	6	50	3	54	1237
		Nógrád			1				24	
		Pest		1	1			9	137	33
		Somogy			3			3	62	1
		Szabolcs-Szatmár-Bereg						6	42	1
		Tolna					1	1	55	
		Vas		4		2	4	2	96	134
		Veszprém		6	4	11	18	3	49	527
		Zala		3				5	64	
Total	510	57	36	50	165	104	2012	5286		

Stamping out and disposal of carcasses

Suppressive vaccination

- in the last 4 holdings
- immediately

Killing at the holding

- captive bolt and pithing

Disposal of carcasses

- transport in closed trucks, disinfection
- burial at dedicated sites



Credit: Zoltán Ács



Credit: Index

Tracing back and forward

Live animals:

- movements, contact holdings
- slaughterhouses, assembly center

Milk:

- processing establishments
- milk tankers
- whey as feed
- milk at the holding

Personnel:

- workers
- veterinarian
- inseminator
- owner

Semen

- from EU registered establishment

Feed:

- TMR from approved establishment
- silage, hay

Bedding

- straw

Water:

- tap water

ABP:

- contact holdings on the route of the trucks
- drivers

Contacts of outbreak no. 1

Contact establishments	No
Via milk tankers	12
Drivers of milk tankers	2
Via ABP transport	35
Workers	2
Via transport vehicles – assembly center	4
Milkers	2
Total	53

Measures

All measures as described in EU CDR 2020/687

Prohibitions in the protection (3km) and surveillance zones (10 km)

- Movements of susceptible animals from and to establishments in the restricted zone
- Restocking of susceptible game animals
- Fairs, markets, shows and other gatherings of susceptible animals
- Collection and movements of semen, oocytes and embryos obtained from susceptible animals
- Itinerant natural service and artificial insemination of susceptible animals
- Movements of fresh meat (including offal) and meat products from susceptible animals from slaughterhouses or game handling establishments
- Movements of raw milk and colostrum and dairy products obtained from susceptible animals from establishments in the restricted zone
- Movements of animal by-products (eg. manure, hide and skins, wool)

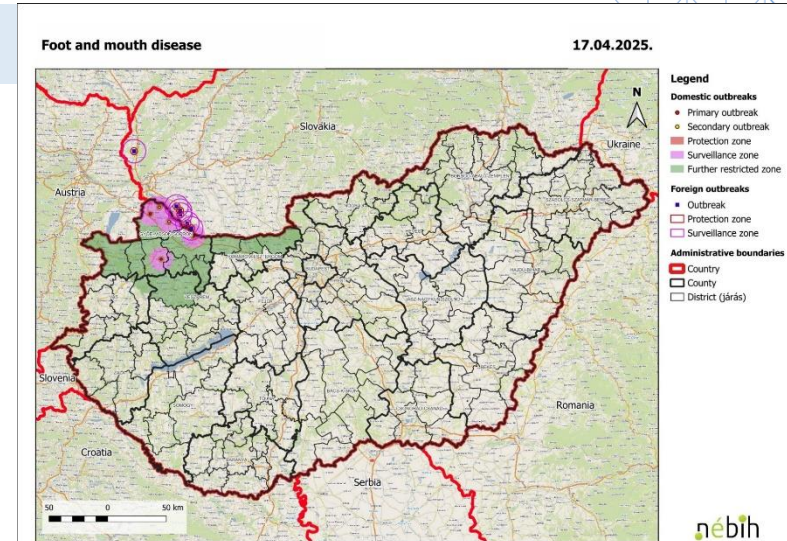
Measures

Further Restricted Zone

- **susceptible animals can only be moved to direct slaughter** – sample taking, meat can only be marketed inland

Additional measures - highlights

- closed keeping of susceptible animals in the PZ and SZ, ban on grazing in all zones
- no inbound movements of susceptible animals to the restricted zones, no transit
- disinfection of vehicles at the border crossings in the FRZ and within the zones
- no exhibitions or other gatherings of susceptible animals can be organised in Hungary
- touristic places (eg. zoos, wild game parks) keeping susceptible animals must be kept closed in the restricted zones



Measures



Challenges and experiences

Cleaning, disinfection, disposal

- Methods:
 - dry materials – burning, transfer to plant
 - milk, bedding – stacked to heat (with manure)
 - slurry - alkalify
- Large amount – logistics, time, staff

Trade restrictions

- Inland
- International



Communication, awareness

Press releases (till 05.06)	
Radio and television	854
Newspapers	519
Online articles	5160
Total	6533



Food and Agriculture
Organization of the
United Nations

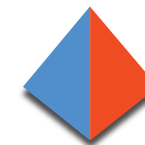
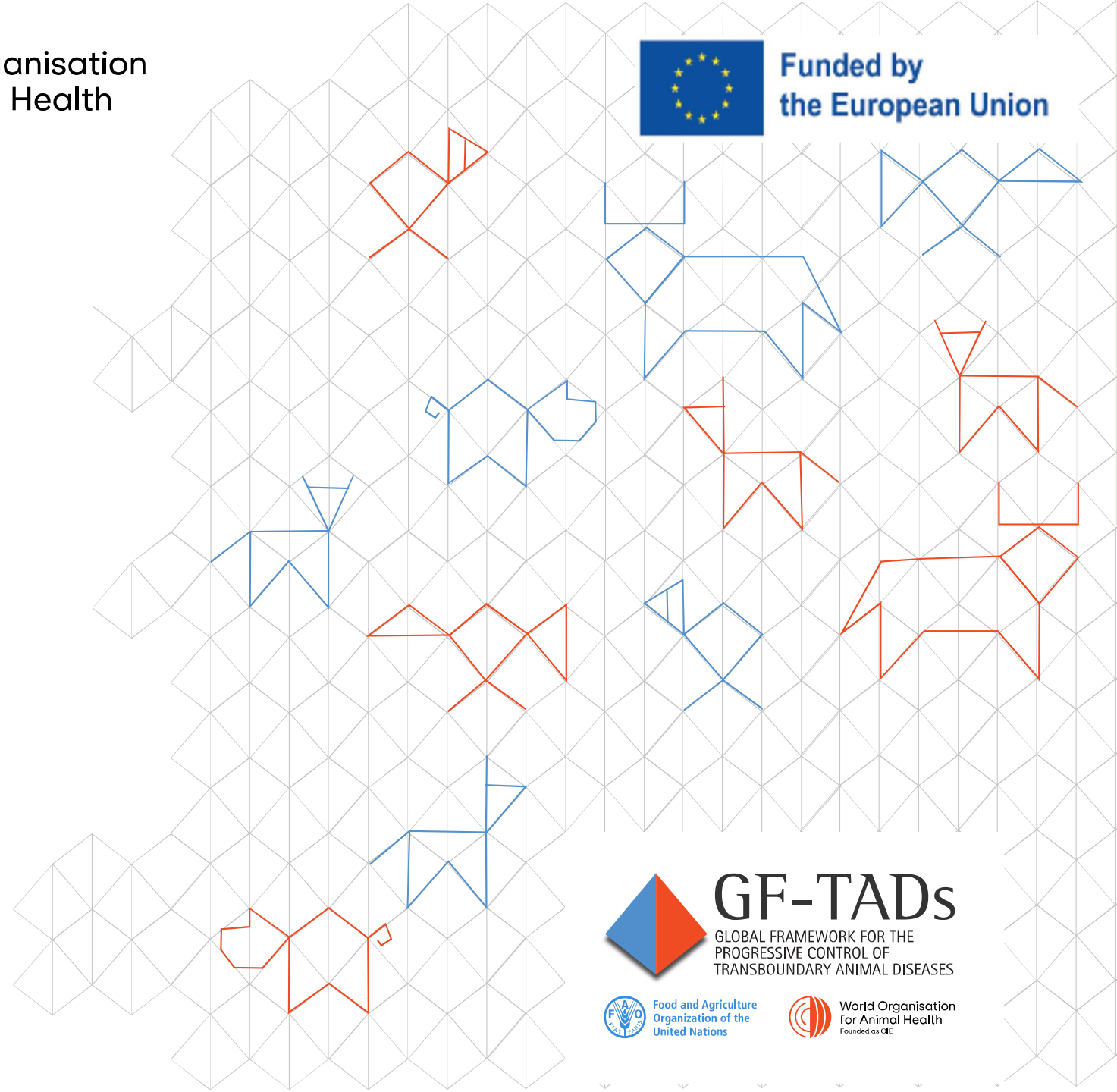


World Organisation
for Animal Health
Founded as OIE



Funded by
the European Union

THANK YOU



GF-TADs

GLOBAL FRAMEWORK FOR THE
PROGRESSIVE CONTROL OF
TRANSBOUNDARY ANIMAL DISEASES



Food and Agriculture
Organization of the
United Nations



World Organisation
for Animal Health
Founded as OIE