



Food and Agriculture  
Organization of the  
United Nations



World Organisation  
for Animal Health  
Founded as OIE



Funded by  
the European Union

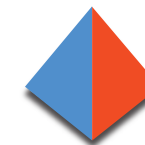
# 1<sup>st</sup> GF-TADs Regional Conference in the European region

## Lumpy Skin Disease: experience from Italy

Italian Ministry of Health

Department of Human Health, Animal Health,  
Ecosystem (One Health) and International Relations  
Directorate General for Animal Health

Dr. Giovanni Filippini, 23 September 2025, Belgrade, Serbia



### GF-TADs

GLOBAL FRAMEWORK FOR THE  
PROGRESSIVE CONTROL OF  
TRANSBOUNDARY ANIMAL DISEASES



Food and Agriculture  
Organization of the  
United Nations



World Organisation  
for Animal Health  
Founded as OIE

## How it began

### Sardinia (Nuoro province)

First suspect on June 20<sup>th</sup> -> confirmed on June 21<sup>st</sup>

21 out of 131 cattle showed symptoms



### Sardinia (Nuoro province)

Second suspect on June 22<sup>nd</sup> -> confirmed on June 25<sup>th</sup>

9 out of 33 cattle showed symptoms (older lesions)

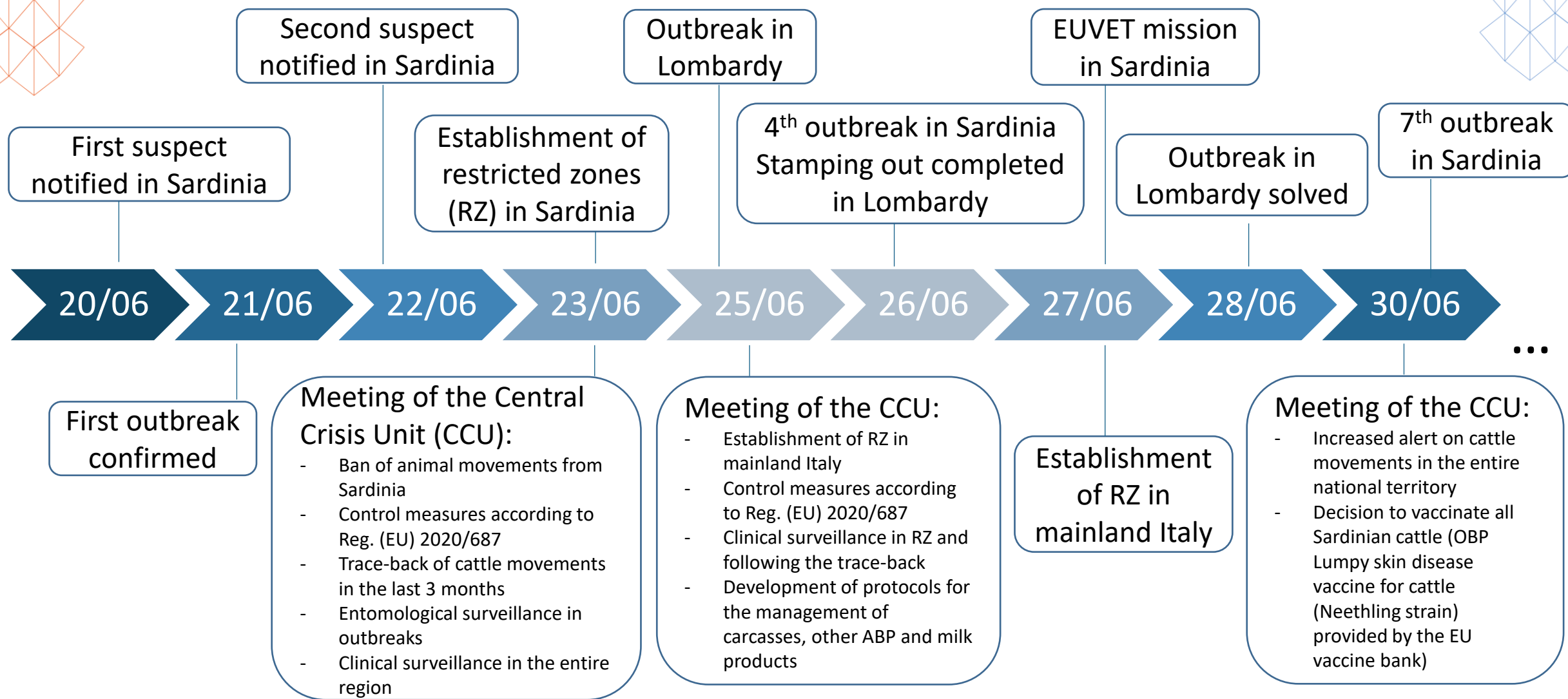




## Clinical signs

- Hyperthermia, depression, lameness, anorexia.
- Profuse salivation, nasal and ocular discharge.
- Cutaneous nodules, initially on the neck, thorax, and perineal region.
- Scabs.
- Scars after scab detachment.
- Ulcerative lesions on the muzzle, nostrils, and oral mucosa, particularly on the hard palate.

## Timeline of events (1)



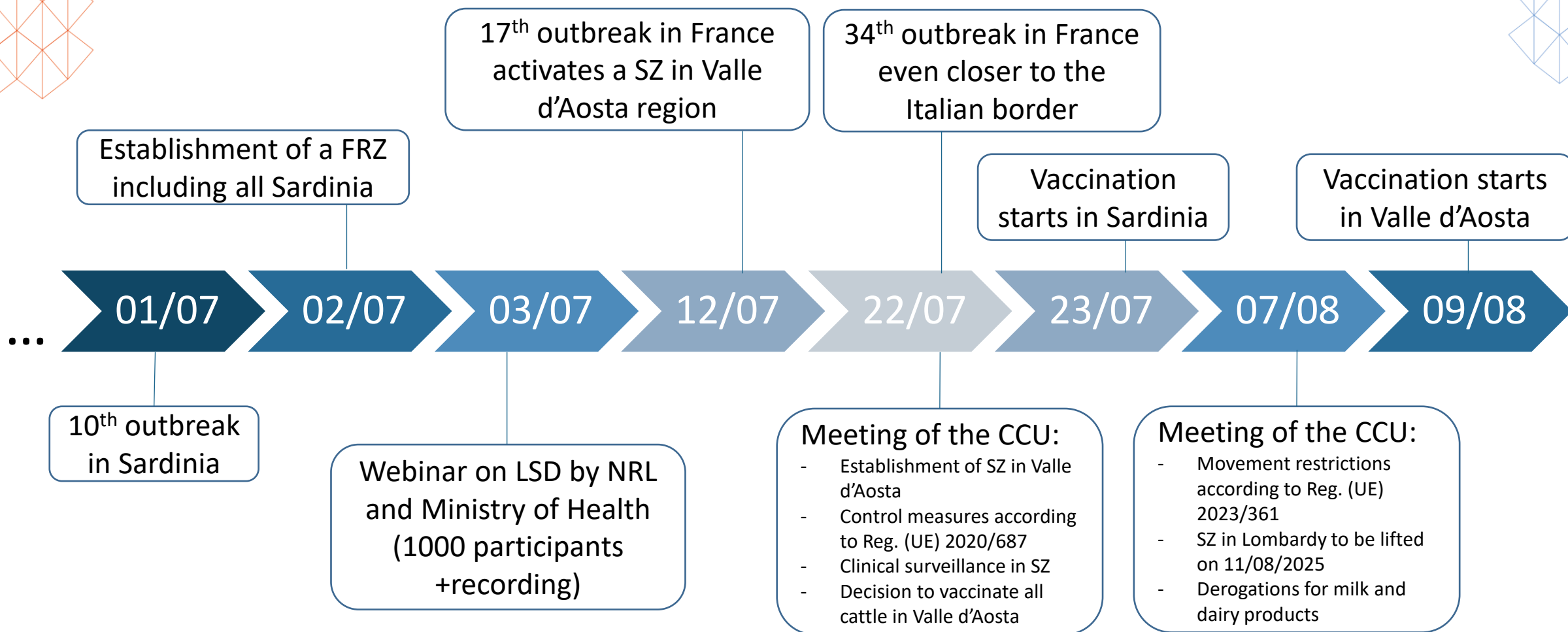
## EUVET mission results and spread hypothesis

- Lesion dating suggested virus introduction occurred **~3 months** before the first detected cases.
- Due to intra-regional movements, infection across the **whole region** could not be ruled out.
- So far, the infection dynamics, entry date, and origin **remain unknown**.
- **Vaccination** across the entire island was deemed the best approach to control the outbreak.



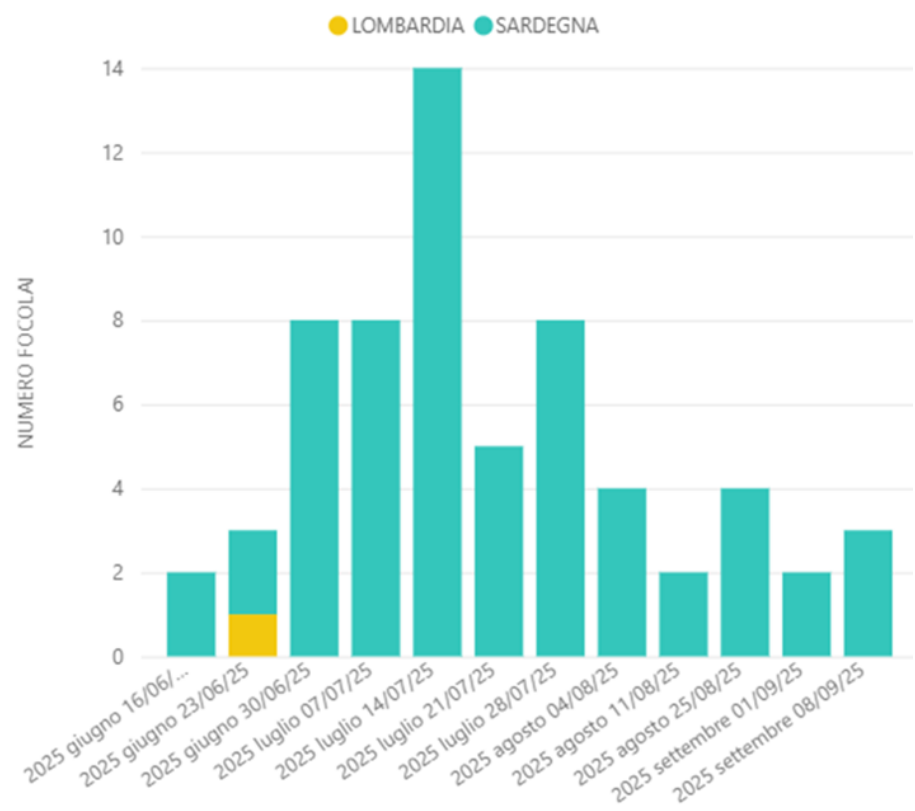


## Timeline of events (2)



## Outbreak status

Total confirmed outbreaks as of 22/09/2025: **66**



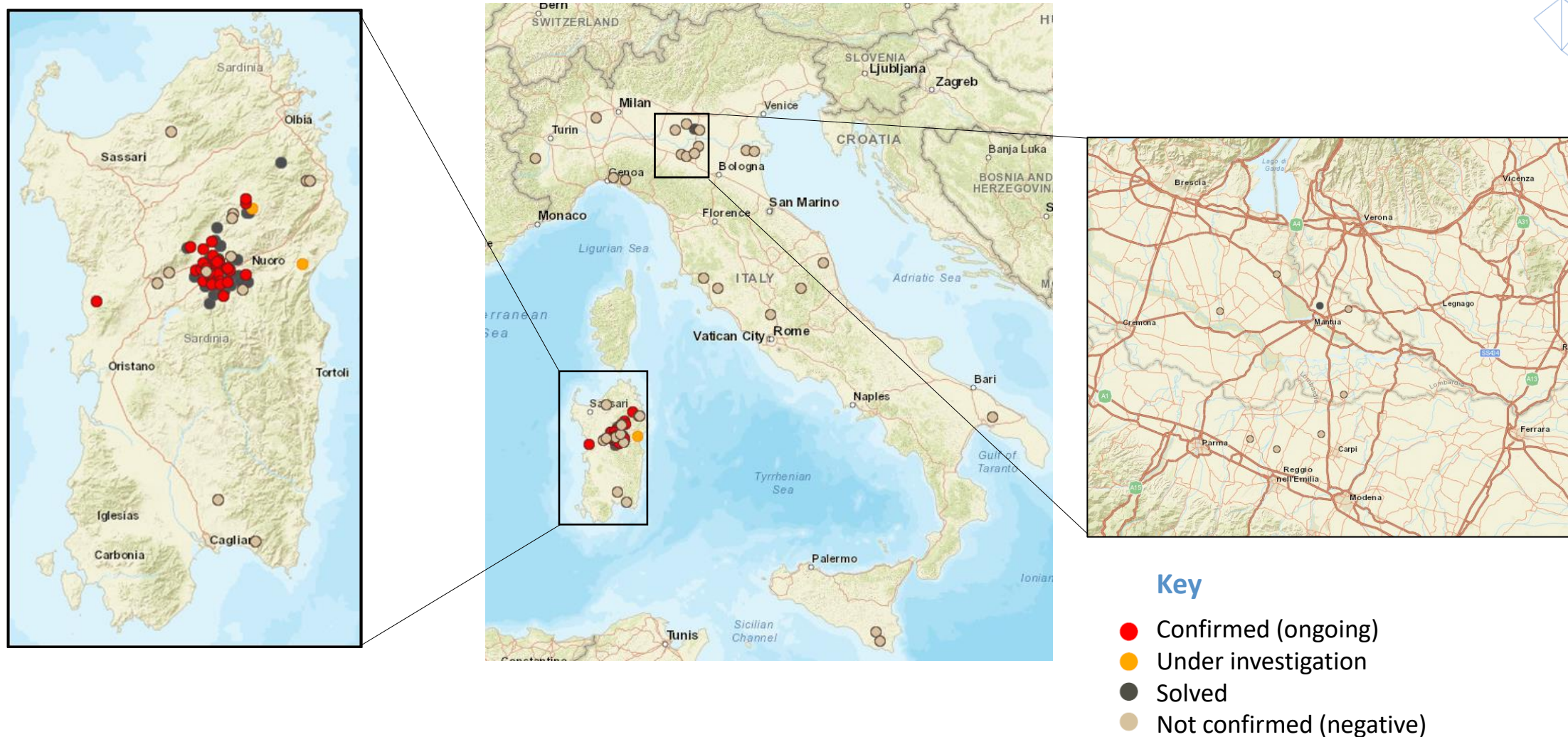
Region	Under investigation	Confirmed (ongoing)	Solved	Not confirmed (negative)
Sardinia	3	33	32	12
Lombardy	-	-	1	4
Other regions	-	-	-	17

Mortality 6.2%

Morbidity 21.4%

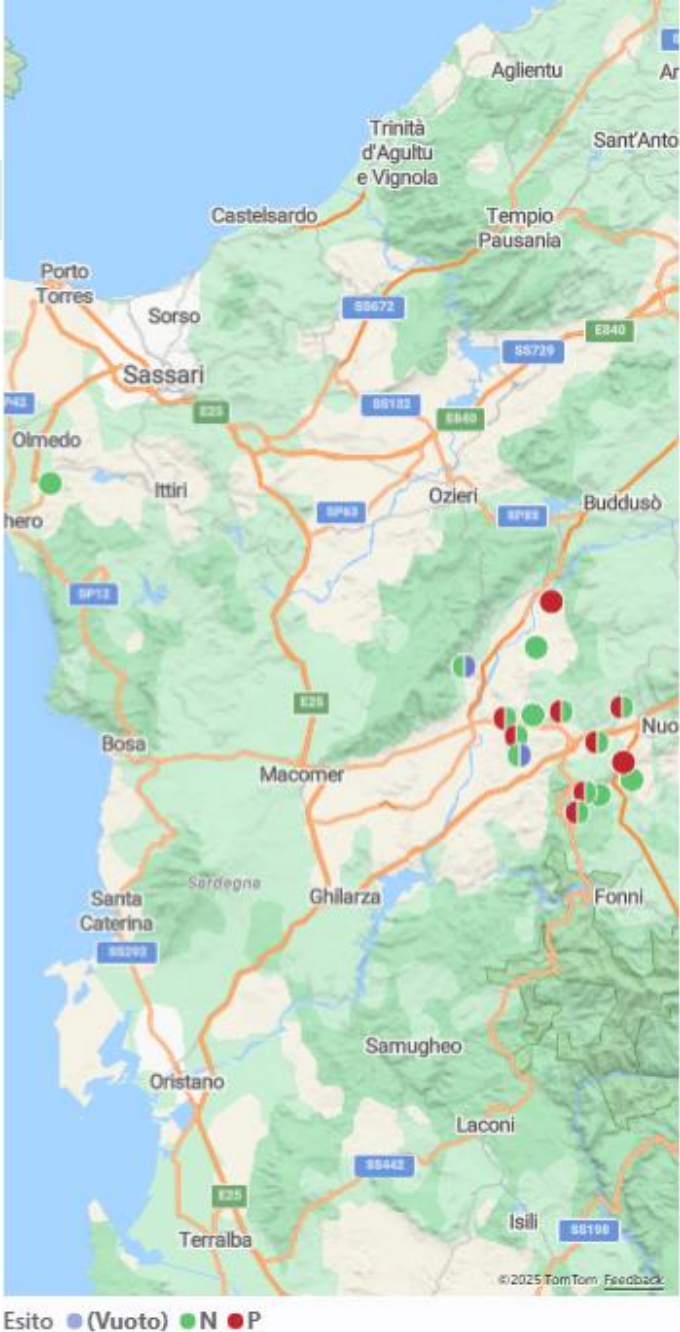
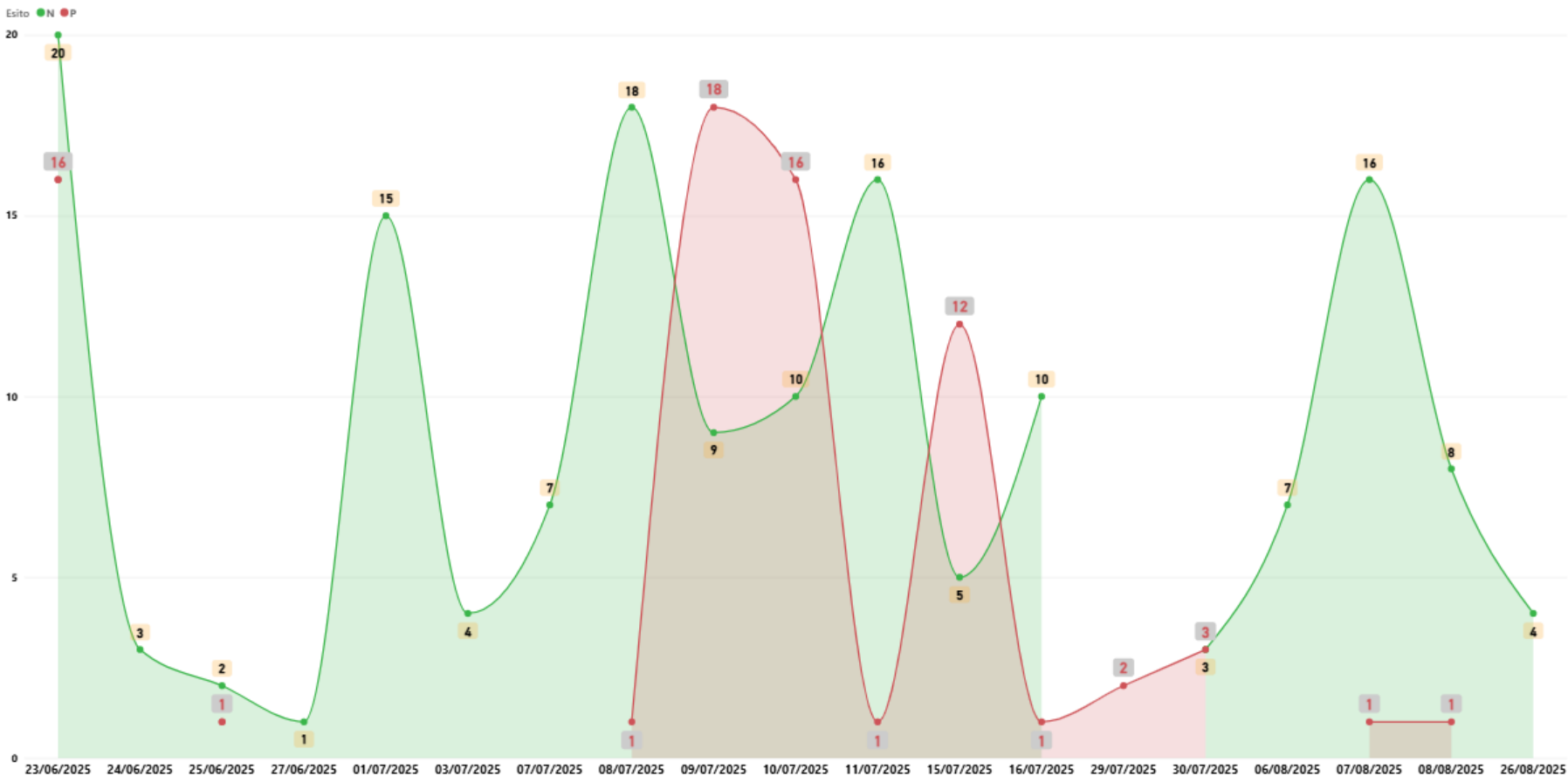
**1,757 culled animals**

## Map of the outbreaks

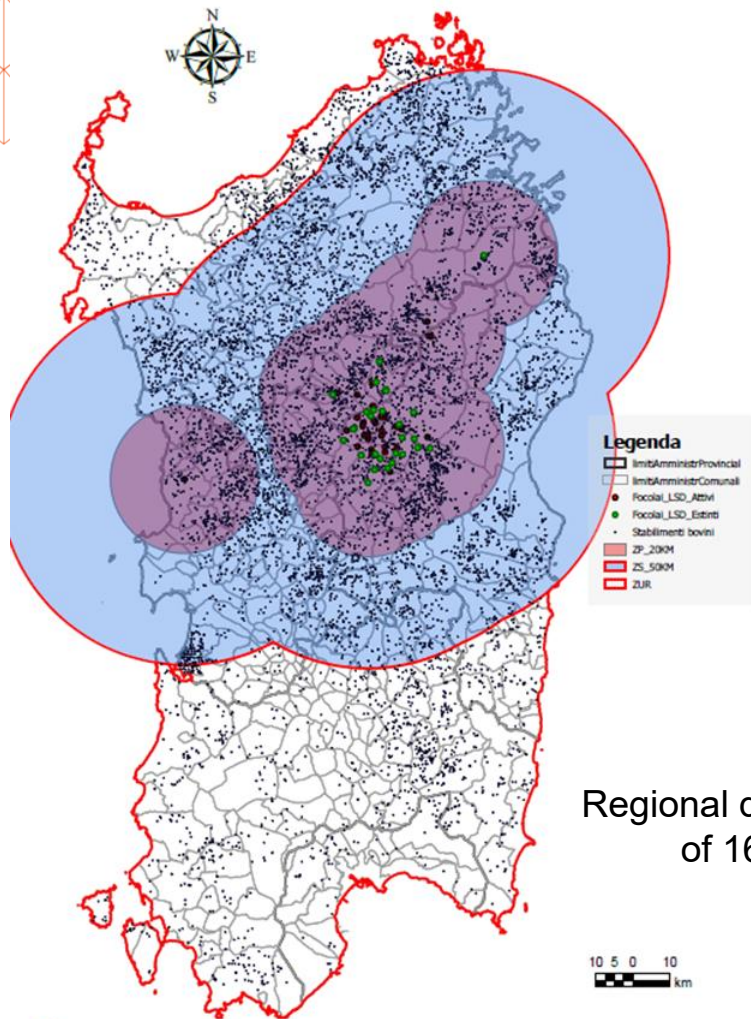


# Entomological surveillance in Sardinia

Positivity to LSDV in **ticks** (*Hyalomma marginatum*, *Rhipicephalus bursa*) and **diptera** (*Musca domestica*, *Sarcophaga carnaria*, *Hippobosca equina*)

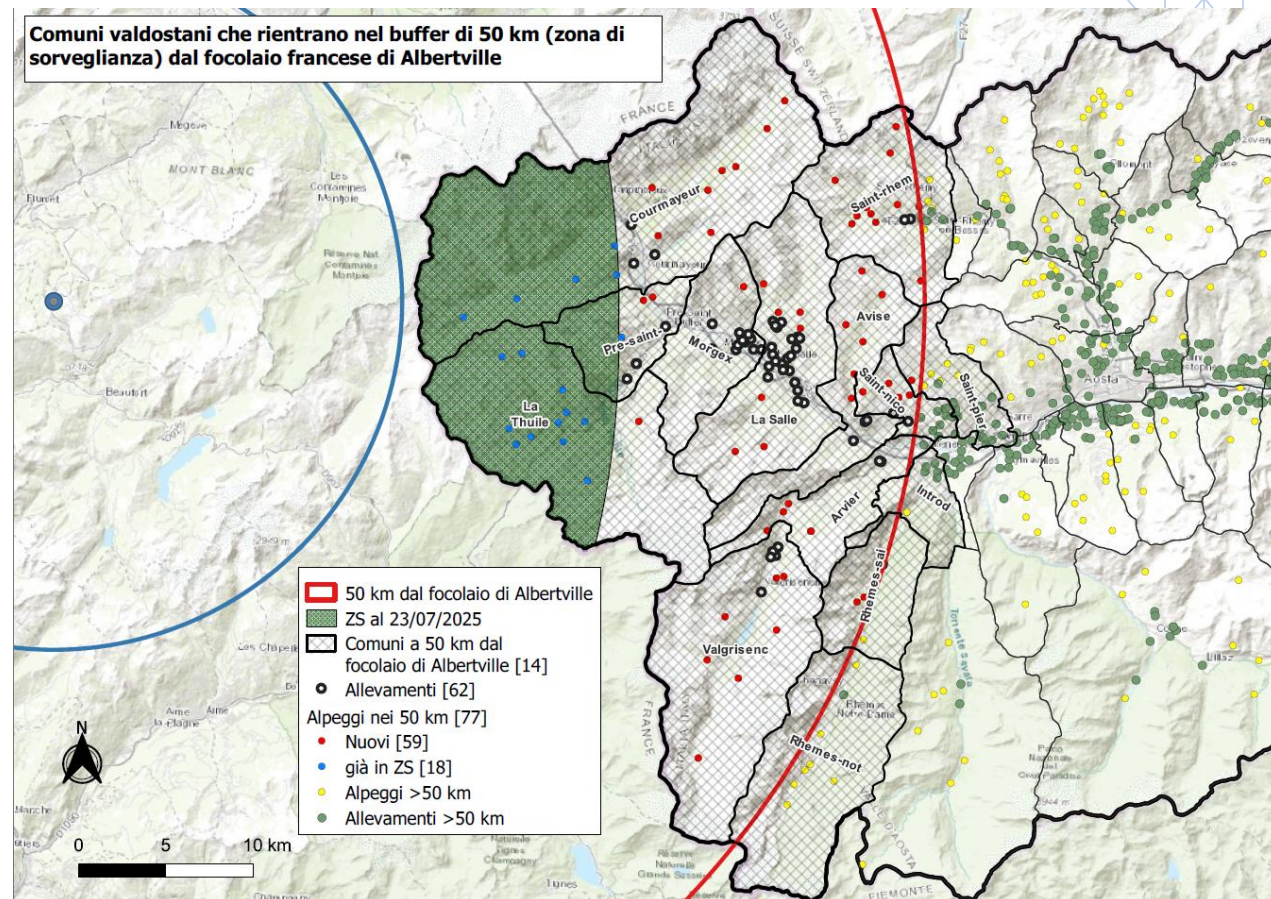


## Restricted zones in Sardinia



Regional decree no. 1035  
of 16/09/2025

## Restricted zones in Valle d'Aosta



Regional decree no. 4094  
of 23/07/2025

## Vaccination campaign

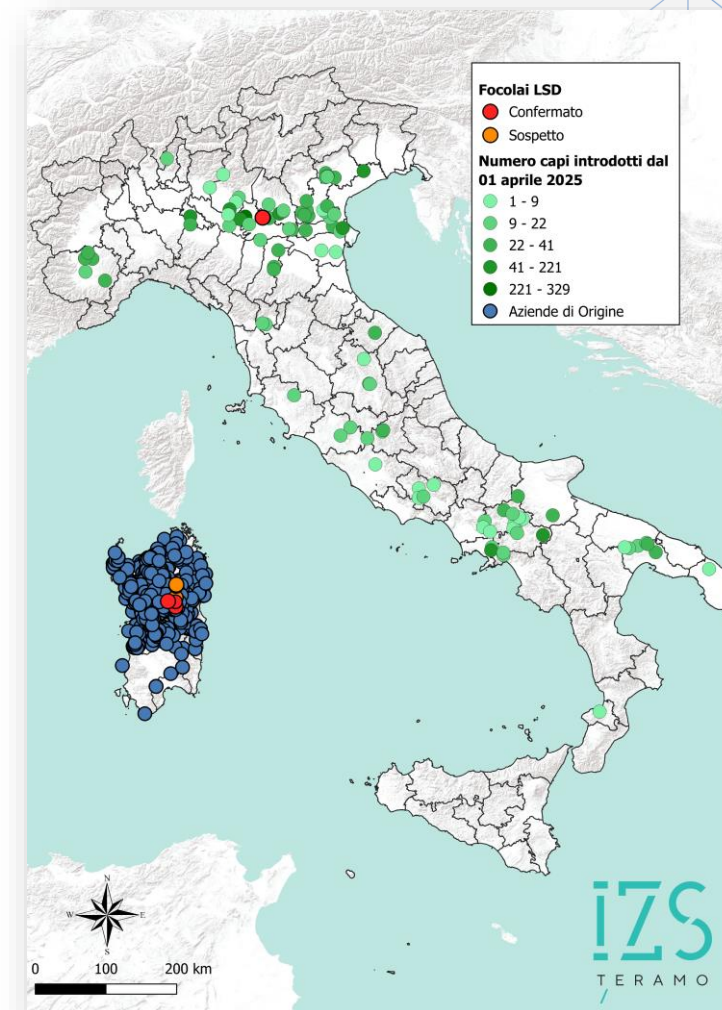
Region	Number of establishments with vaccinated animals	% vaccinated establishments	Number of vaccinated animals	% vaccinated animals
Valle d'Aosta	1,024	97.62%	33,291	<b>98.01%</b>
Sardinia	6,010	78.40%	203,328	<b>71.66%</b>

**Side effects** reported in 15 farms (**0.28%**):  
local reaction at injection site, Neethling disease, fever

SCHEMA VACCINAZIONI LUMPY SKIN DISEASE								
ASL	N DI STAB CAPI > 0	N DI STAB VACCINATI	% STAB VACCINATI	TOT CAPI BDN	N CAPI PRESENTI SU STAB VACCINATI	N CAPI VACCINATI	% CAPI VACCINATI SU PRESENTI	% CAPI VACCINATI SU CONSISTENZA
<b>1 SASSARI</b>	1788	1428	79,87%	55145	41946	40916	97,54%	74,20%
<b>2 GALLURA</b>	1497	1351	90,25%	32658	29591	29318	99,08%	89,77%
<b>3 NUORO</b>	1890	1399	74,02%	74083	50863	44077	86,66%	59,50%
<b>4 OGLIASTRA</b>	496	235	47,38%	30615	13997	12442	88,89%	40,64%
<b>5 ORISTANO</b>	1112	968	87,05%	60947	57064	55379	97,05%	90,86%
<b>6 MEDIO CAMPIDANO</b>	98	93	94,90%	3867	3537	3296	93,19%	85,23%
<b>7 SULCIS</b>	120	113	94,17%	3230	3002	3078	102,53%	95,29%
<b>8 CAGLIARI</b>	665	423	63,61%	23202	16696	14822	88,78%	63,88%
<b>Totale</b>	<b>7666</b>	<b>6010</b>	<b>78,40%</b>	<b>283747</b>	<b>216696</b>	<b>203328</b>	<b>93,83%</b>	<b>71,66%</b>

## Strengths

- Fast intervention after first suspicion
  - Movement ban
  - Epidemiological investigation
- Coordination between local and central level
- Strong support of the NRLs (CESME, COVEPI)
- Back-tracing and clinical surveillance
  - Effective containment of the epidemic in mainland Italy
- Quick access to the EU vaccine bank



## Challenges (1)

- Free-ranging/extensive farms
  - Shared pasture
  - Difficulties in handling animals (clinical examination, culling, vaccination)
- Availability of disposal plants for Category 1 materials under Reg. (EC) no. 1069/2009
- Economic impact
  - Culling and disposal costs
  - Depreciation of animals
  - Market restrictions on milk, dairy products, germinal material
  - Vaccine purchase costs for future vaccination campaigns



## Challenges (2)

- Communication to stakeholders and the general public
- Acceptance of both stamping out and vaccination
  - Appeals to the Administrative Court (TAR)
  - Late compensation
  - Restriction of movements of vaccinated animals

L'EPIDEMIA

23 luglio 2025 alle 15:52, aggiornato il 23 luglio 2025 alle 16:05

### Dermatite bovina, gli allevatori chiedono garanzie: «No all'abbattimento dei capi sani»

Assemblea infuocata a Orotelli: «Perché non si è chiesta una deroga per fare una vaccinazione»

### Regione. Dermartite, slitta la "leggina" Divisi anche sugli allevatori

Sull'emergenza dermatite bovina salta l'accordo in Consiglio. Il provvedimento bipartisan per garantire ulteriori risorse agli allevatori slitta a settembre. Restano i 12 milioni previsti nell'assestamento di bilancio in discussione.

● MURGIA A PAGINA 5

**Le aziende.** L'appello: no agli abbattimenti dei capi sani

## «Effetti positivi dopo l'antidoto, ma servono rimborsi immediati e lo sblocco della movimentazione»

**Il caso.** Sullo sfondo del confronto sulla manovra da 800 milioni, il bubbone della dermatite

## Bovini, la politica litiga sui ristori

Si cerca una mediazione per salvare gli aiuti destinati agli allevatori

**L'EMERGENZA** ● Roghi a Birori, Ozieri e Villacidro



La dermatite dei bovini blocca, con l'economia degli allevamenti, anche la politica regionale. Lo stallo è su una "leggina" per dare il via a 12,8 milioni di aiuti. Si cerca, a fatica, una soluzione bipartisan, chiave di volta anche per definire la partita ben più ampia dell'assestamento di bilancio, 800 milioni. Intanto va a rilento la campagna di vaccinazione.

● A. CARTA, LOCCI, SERUSI ALLE PAGINE 2, 3

**L'EMERGENZA** Cinquanta i focolai registrati nell'Isola, solo uno estinto (l'altro a Mantova)

## Squadre di veterinari ridotte all'osso, la campagna vaccinale va a rilento

Attesi i rinforzi dei liberi professionisti: tempi lunghi nel reclutamento



Food and Agriculture  
Organization of the  
United Nations



World Organisation  
for Animal Health  
Founded as OIE



Funded by  
the European Union

# THANK YOU



*Ministero della Salute*

**IZS**  
TERAMO



ISTITUTO ZOOPROFILATTICO  
SPERIMENTALE DELLA SARDEGNA  
"G. PEGREFFI"



## GF-TADs

GLOBAL FRAMEWORK FOR THE  
PROGRESSIVE CONTROL OF  
TRANSBOUNDARY ANIMAL DISEASES



Food and Agriculture  
Organization of the  
United Nations



World Organisation  
for Animal Health  
Founded as OIE