



Food and Agriculture
Organization of the
United Nations



World Organisation
for Animal Health
Founded as OIE



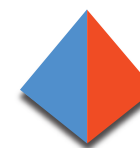
Funded by
the European Union

1st GF-TADs Regional Conference in the European region

**EuFMD Training – developing capacity,
ensuring preparedness and reducing risk**

**The European Commission for the Control of
Foot-and-Mouth Disease (EuFMD)**

Dónal Sammin, 22-25/August/2025, Belgrade, Serbia



GF-TADs

GLOBAL FRAMEWORK FOR THE
PROGRESSIVE CONTROL OF
TRANSBOUNDARY ANIMAL DISEASES



Food and Agriculture
Organization of the
United Nations



World Organisation
for Animal Health
Founded as OIE

What is EuFMD - the European Commission for the Control of Foot-and-Mouth Disease?



A regional technical commission established under FAO in 1954

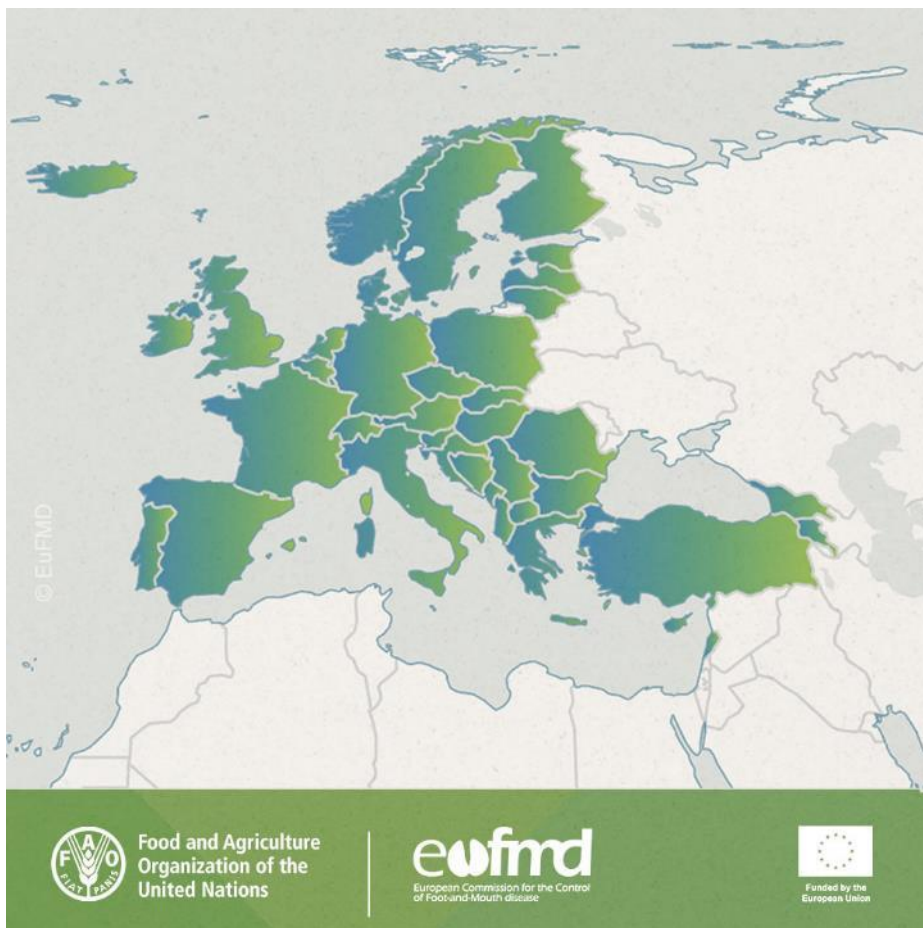
“....core objectiveto promote national and international action with respect to preventive and control measures against foot-and-mouth disease in Europe”

40 Member Nations

Funded by Members and the European Union

The role of EuFMD is to ensure:

(1) Emergency preparedness of its members AND (2) Risk reduction in neighbouring regions



FAST Diseases

FMD And Similar Transboundary animal diseases

Lumpy Skin Disease, Sheep Pox and Goat Pox, Rift Valley Fever and Peste des Petits Ruminants

Training Menu for EuFMD Member Nations

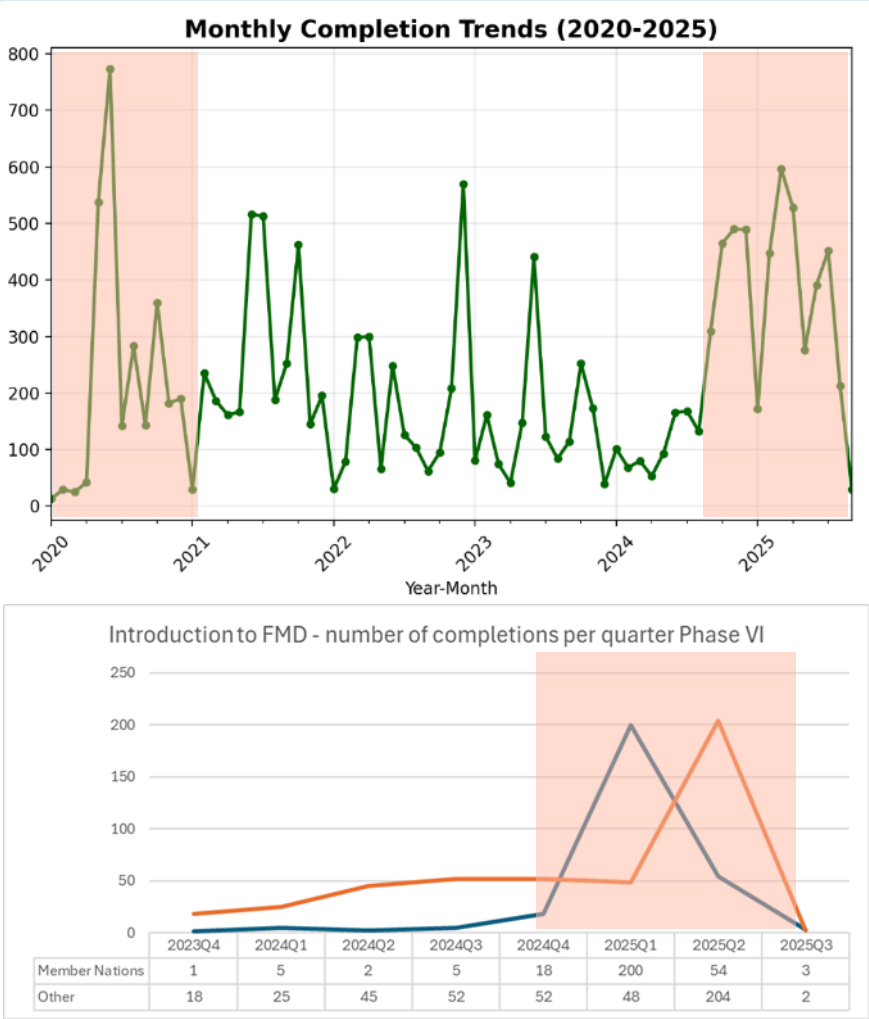


- Real-Time Training
- F2F Workshops
- Laboratory Training
- Virtual learning
- Introductory courses

Training credits are allocated to members

Training for EuFMD Member Nations is demand-led

- Training menu and training credits
- Training focal point in each country
- Training needs assessment every 2-3 years
- Uptake by individuals is determined by events



Real-Time Training

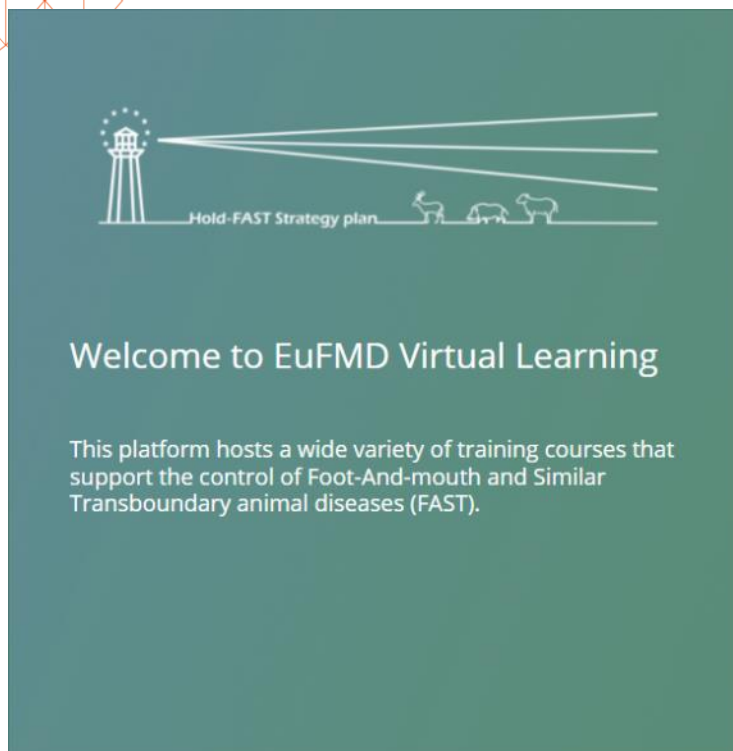
- An intensive training course in FMD outbreak investigation
- Four days in an FMD-endemic country
- Classroom instruction, field demonstration and hands-on activities
- Includes biosecurity, clinical recognition of FMD, ageing of lesions, sample collection, and epidemiological investigation



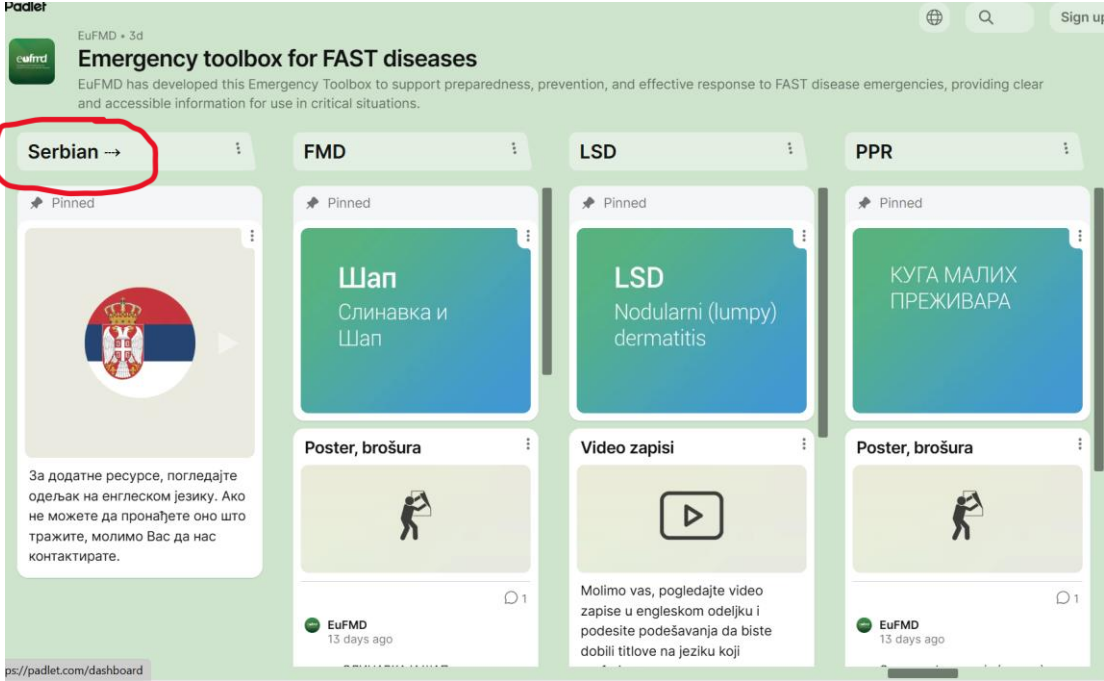
Face-to-face workshops and residential laboratory training courses



Virtual learning courses



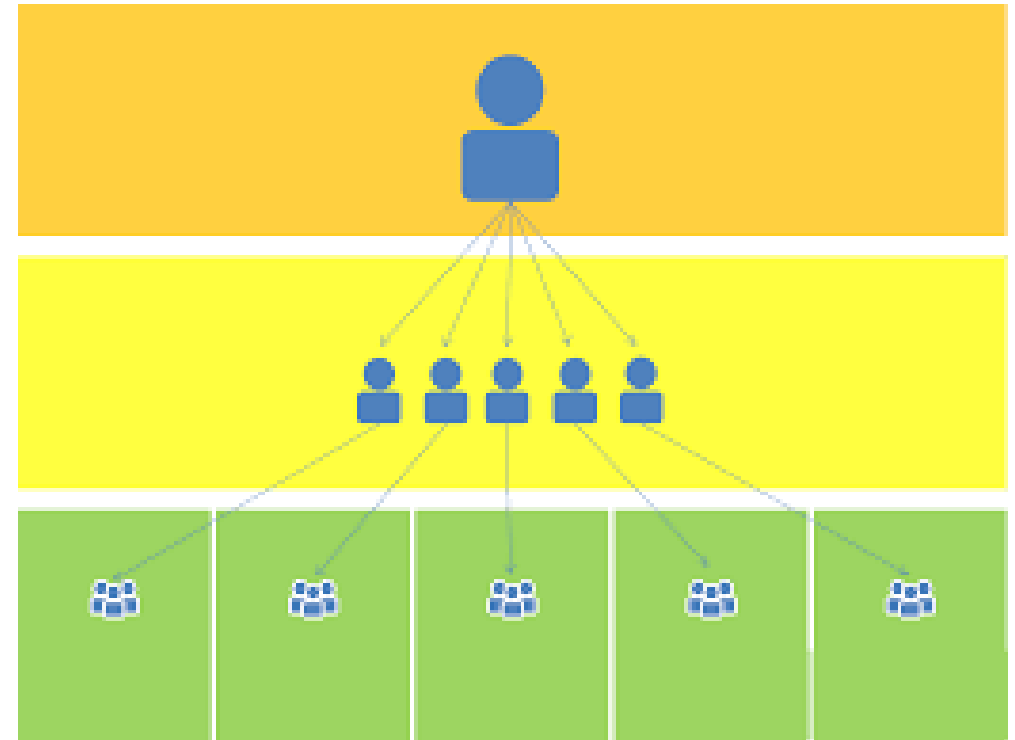
Introductory courses



Cascading newly-acquired knowledge for greater impact

Cascading = to pass on information to a small group of people, who then pass it on to more people;




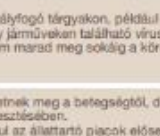

→ encouraged and supported by EuFMD



KISKÉRŐDZŐK PESTISE

GLOBÁLIS MENTESÍTÉSI PROGRAM

Ha PPR-esetet gyanít, a lehető leghamarabb forduljon a hatósági vagy a szolgáltató állatorvoshoz

A KLINIKAI JELEK	LEGYEN TUDAKBAN	A BETEGSÉG FELISMERÉSE
Köhögés	 <div style="background-color: #2e8b57; color: white; padding: 5px; margin: 5px;">A kiskérődzők pestise a juhokat és kecskéket érinti</div> <div style="background-color: #2e8b57; color: white; padding: 5px; margin: 5px;">Hirtelen elhullás, különösen kecskékénél</div>	<p>Vélődik a szemből, az orrnyílásokból és a szájból, kezdetben vékony és festsza, később sűrűvé és sárgássá válik.</p> 
Leverttség		
Hasmenés		<p>A szájból sebek láthatóak és az állat nem eszik.</p> 
Légzési nehézség		
Száraz, repedezett pota és orrnyílak		
Vélődik a szemből és az orrnyílakból		
Láz		

KISKÉRŐDZŐK PESTISE, HOGYAN TERJED?

 KÖZVETLEN KAPCSOLAT AZ ÁLLATOKKAL	<p>A legfontosabb fertőzési út az állatokkal való közvetlen érintkezés és a belégzés. A vírus az orr- és szemváladékokkal, vizelettel és széklettel ürül.</p>
 MECHANIKAI ÁTVITEL	<p>Egy másik fertőzési út a ragályfógó tárgyakon, például lábbelikben, ruházaton, állatorvosi műszereken vagy járműveken található vírusrészecskék mechanikai átvitele. A vírus azonban nem marad meg sokáig a környezetben.</p>
 AZ EMBEREK SZEREPE	<p>Az emberek nem fertőződhetnek meg a betegségtől, de fontos szerepet játszanak a betegség terjesztésében. Az olyan helyek, mint például az állattartó piacok elősegíthetik a betegség terjedését.</p>

Az Európai Unió támogatásával

The development component of the presentation of material in this information product does not imply the expression of any opinion or endorsement on the part of the Food and Veterinary Inspection of the European Union (FVI), nor does it imply any liability, whether, in whole or in part, for the publication, or concerning the information or the results or the use thereof.

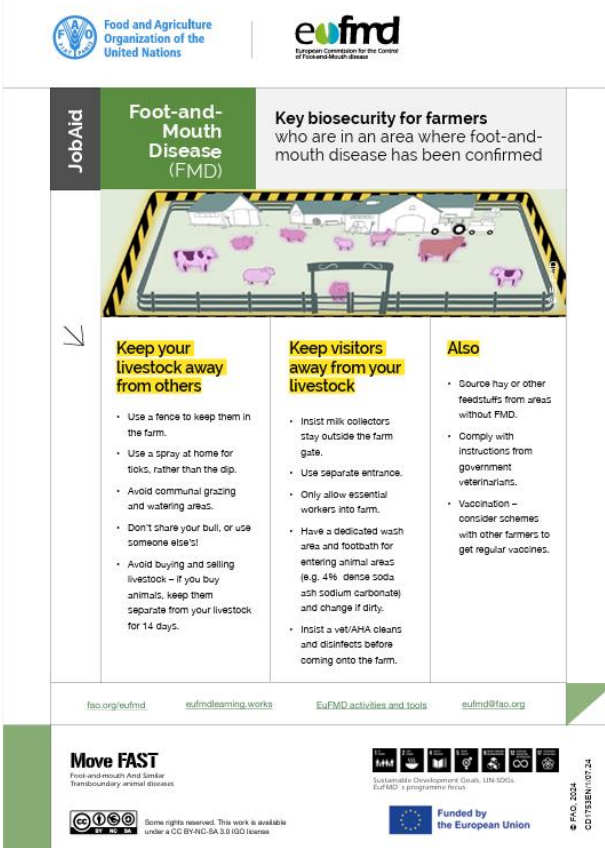
Forrás: <https://www.fao.org/zh/>



Στη στεφάνη
=< 1 εβδομάδα.

Αν η αλλοίωση δεν
βρίσκεται στη στεφάνη
= μπορεί να γίνει
εκτίμηση με βάση την
απόσταση ανάμεσα
στην αλλοίωση και στη
στεφάνη.

Open-access online resources



Decision Support Tools

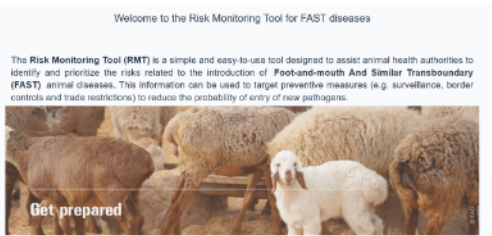
The Risk Monitoring Tool for FAST diseases (RMT-FAST)

- A **semi-quantitative** generic risk assessment framework developed by EuFMD (spreadsheet and web application)
- Aim: **rank the risk of introduction** of FAST diseases in MNs (or any interested country) from European Neighbourhood.

Premise

Risk of entry of a new pathogen is proportional to:

- The **epidemiological situation** in the source country
 - Occurrence of the disease
 - Control measures implemented
- The **strength of connection** between the source country and the target country
 - Different types of connection: Geographical proximity, trade...
 - Connections contribute to one or more spread pathways
- **Effectiveness of each pathway**



European FMD spread model (EuFMDiS)

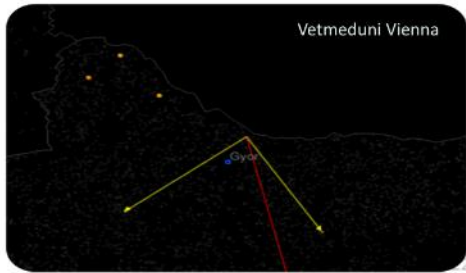
Use of the EuFMDiS

- Better understanding potential outbreak scenarios and disease spread dynamics
- Assessing the potential impact of an outbreak
- Evaluation and optimization of control strategies
- Assessing resources needs
- Use for training purposes and simulation exercises.



EuFMDiS Modelling Centre

Established in 2024 to support the integration of the model into country contingency planning processes.



Communities of Practice (peer-to-peer learning)

Communities of Practice for

→ Biorisk; and

→ Emergency preparedness

Networks which promote the sharing of knowledge between practitioners through meetings and workshops.

The European Commission for the Control of Foot-and-Mouth Disease (EuFMD)



Food and Agriculture Organization of the United Nations



Who we are

Global situation

What we do

Progressive Learning Pathway

Meetings and Events

Tools

Resources

Tiers C and D Biorisk communities of practice

Global situation

Foot-and-mouth disease

FAST diseases

Global FMD surveillance

Global FMD control strategy

Minimum Biorisk Management Standards FMDv

The four-tier classification system

History of the MBRMS

Tiers C and D Biorisk Communities of Practice

Tiers C and D Biorisk Communities of Practice

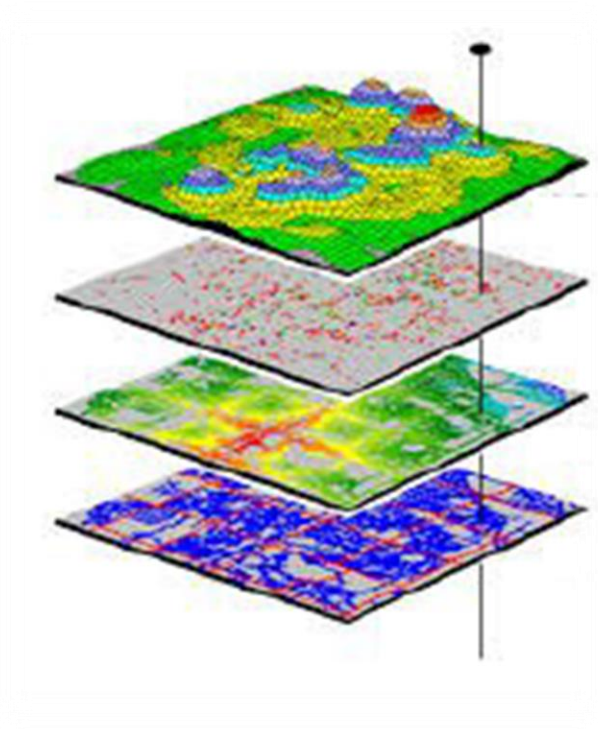
In 2022, the EuFMD constitution was amended with new obligations for Member Nations, including the obligation to apply the MBRMS. To assist Member Nations with this, the EuFMD, working with the SCBRM, agreed to establish biorisk communities of practice for Tiers C and D to facilitate access to advice and information on implementation of and adherence to the MBRMS. Additionally, a need was identified for better communication and opportunities for networking between biorisk officers (BROs) of the different Tier C and D laboratories, promoting the sharing of information, biorisk-related issues, and best practices.

For Tier C laboratories, the aim of the Community of Practice (CoP) is to improve knowledge and networking, facilitated through workshops and virtual meetings across the network. By increasing communication between Tier C facilities, an increase in the awareness of the MBRMS for this Tier and better equivalence in meeting these requirements is envisioned. As members of FMD Tier C CoP, BROs will keep updated and the importance of being prepared for FMDV will remain in their sphere of focus. The workshops will not only provide education and information on the MBRMS requirements but also directly facilitate networking and exchanges between BROs from different Tier C laboratories.

For Tier D laboratories, the CoP offers a system of laboratory assessments to foster understanding and implementation of the MBRMS, directly involving all facilities and facilitating networking and knowledge exchange. Overall, this will enhance the biorisk management standards of laboratories and animal facilities handling infectious FMDV in FMD-free countries in the European area. It is not the aim to replicate a comprehensive auditing system for facilities, nor is the scope of the visits any

Capacity development in countries neighbouring Europe

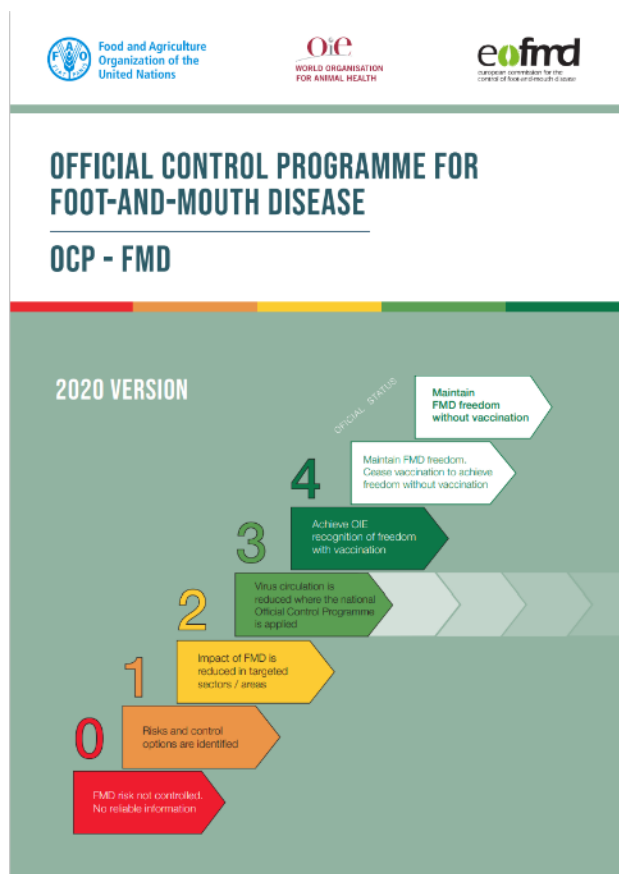
Risk Mapping Workshops



Risk Information Sharing Platforms



Supporting the Progressive Control Pathway for FMD – the PCP-FMD toolkit





Food and Agriculture
Organization of the
United Nations



WORLD ORGANISATION
FOR ANIMAL HEALTH



euFMD
European Commission for the Control of
Foot-and-Mouth Disease

OFFICIAL CONTROL PROGRAMME FOR FOOT-AND-MOUTH DISEASE

OCP - FMD

2020 VERSION

The European Commission for the Control of Foot-and-Mouth Disease (EuFMD)

[Home](#)[Who we are](#)[Global situation](#)[What we do](#)[Progressive Learning Pathway](#)[Meetings and Events](#)[Tools](#)[Resources](#)

Progressive Control Pathway for FMD (PCP-FMD)

Global situation

Foot-and-mouth disease

FAST diseases

Global FMD surveillance

Global FMD control strategy

FMD Working Group

Progressive Control Pathway

Risk-based approach

PCP-FMD Support Officers

Minimum Biorisk Management Standards FMDv

Support to FMD affected countries

The Progressive Control Pathway for foot-and-mouth disease

The Progressive Control Pathway for Foot-and-Mouth Disease (PCP-FMD) was developed by EuFMD and FAO and endorsed by the WOA. It is a risk and evidence-based framework that guides endemic countries to progressively improve their management of risk factors for FMD and reduce disease impacts and viral circulation. As countries advance through the PCP-FMD, disease frequency is reduced to the point where an application to the WOA for official recognition of freedom from FMD (with or without vaccination) may be successful and sustainable.

The PCP-FMD:

- is a core tool of the Global FMD Control Strategy, along with the WOA Performance of Veterinary Services Pathway (PVS).
- consists of two distinct domains: (i) a Global Framework for the Progressive Control of Transboundary Animal Diseases (GF-TADs) domain from Stage 0 up to and including Stage 3 and (ii) a WOA domain beyond Stage 3.
- supports the implementation of risk-based approaches in which each country

Dashboard

PCP-FMD

Guidelines

PCP-FMD 2019 guidelines

Related links

- Global Framework for the Control of Transboundary Animal Diseases
- World Organisation for Animal Health FMD Portal
- REMESA Mediterranean

Responding to FMD and LSD outbreaks in Europe in 2025

- Translated all relevant materials into local languages
- Opened access to emergency preparedness courses

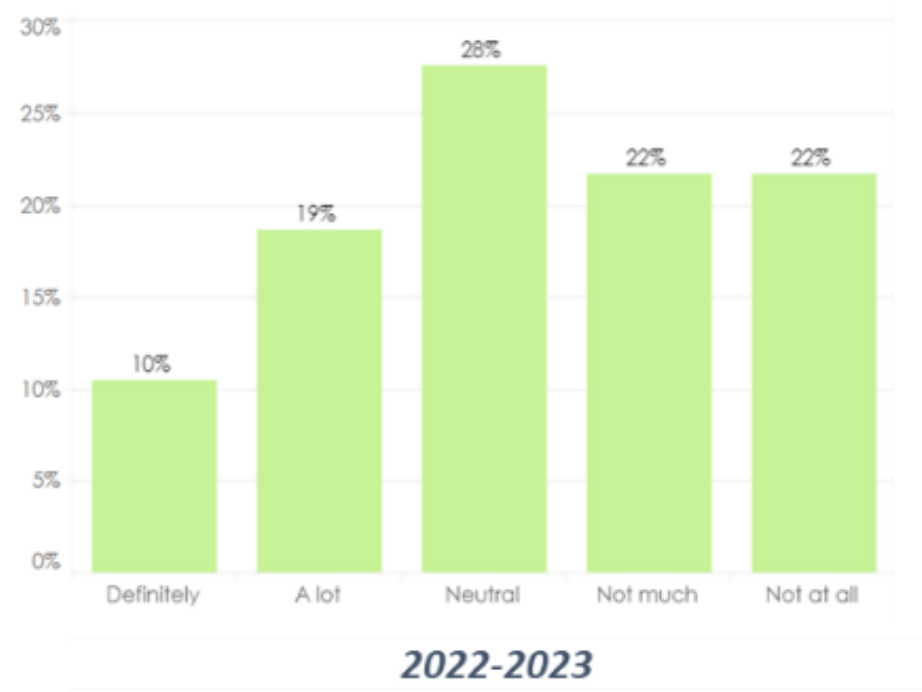
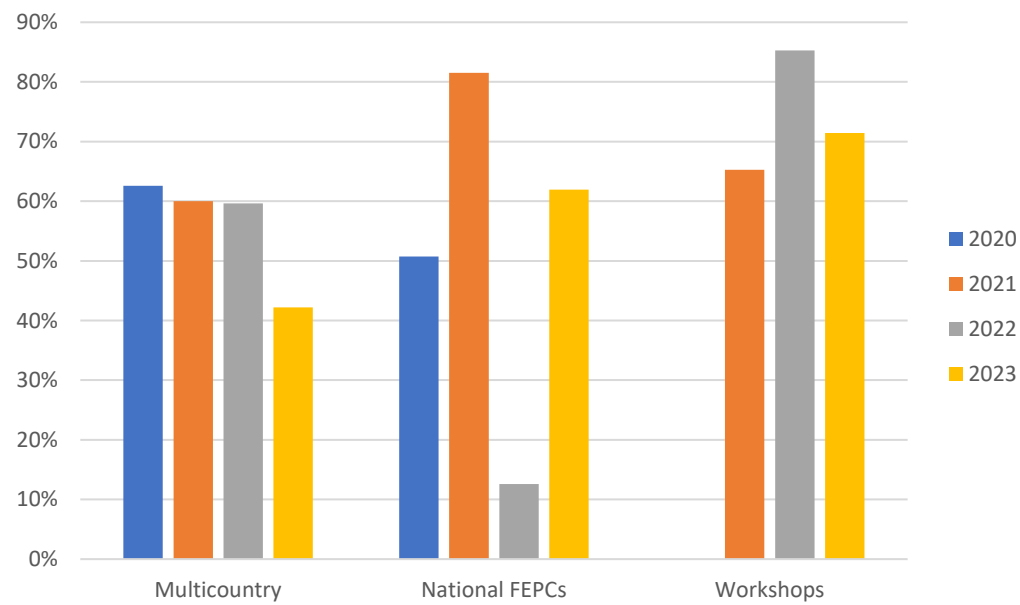
Webinars

- On FMD preparedness 28 January-18 March
- On Biosecurity 20 May & 10 June
- On Lumpy Skin Disease 17 July



Measuring outputs and outcomes - the benefits and impact of training

Completion rate per type of course



The future direction of EuFMD training

Member Nations' capacity development needs

Evolving FAST disease threats

Application of new technologies and practices

Measuring and improving outcomes?





Food and Agriculture
Organization of the
United Nations

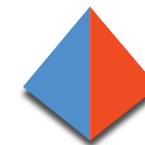
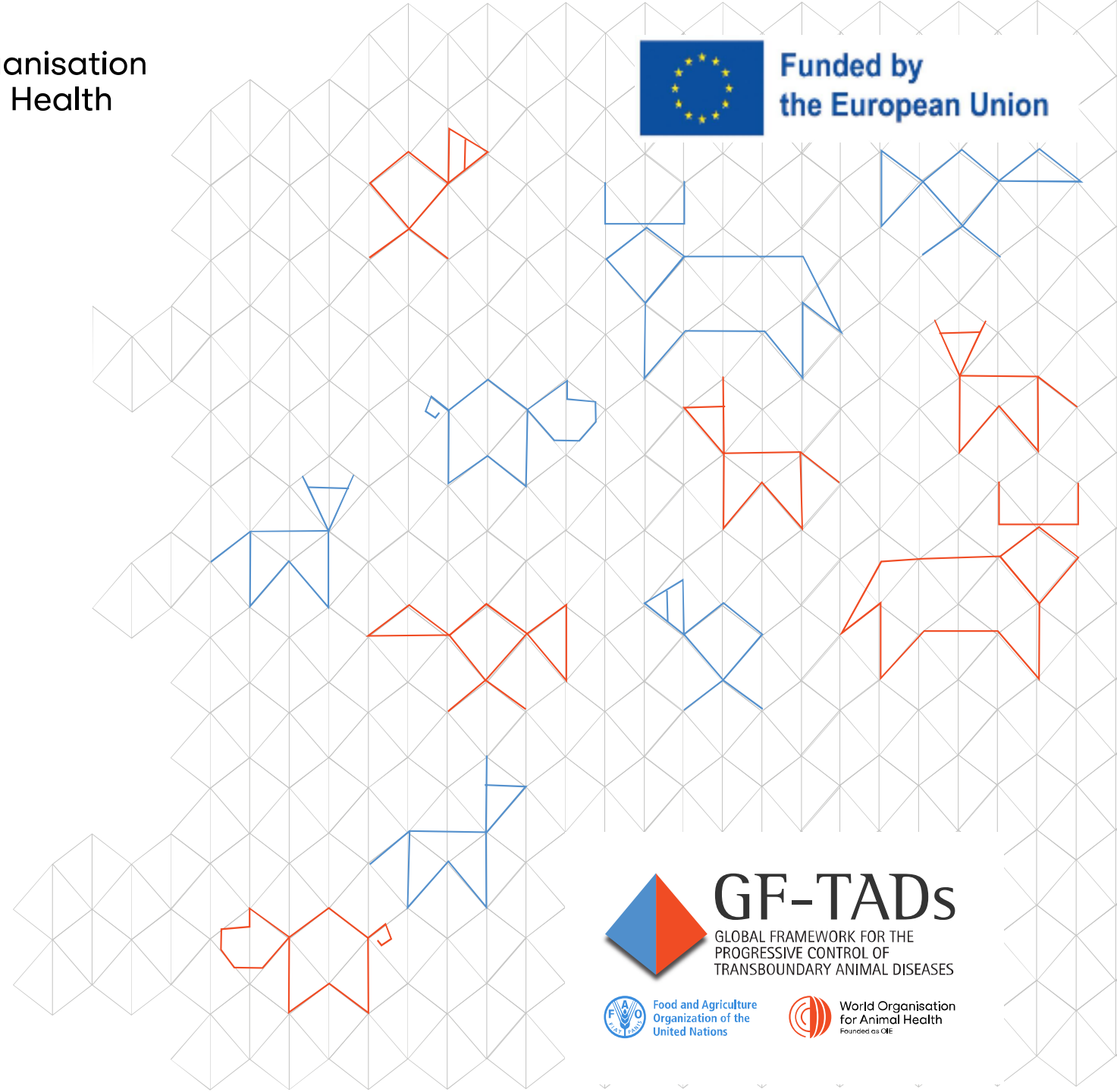


World Organisation
for Animal Health
Founded as OIE



Funded by
the European Union

THANK YOU



GF-TADs

GLOBAL FRAMEWORK FOR THE
PROGRESSIVE CONTROL OF
TRANSBOUNDARY ANIMAL DISEASES



Food and Agriculture
Organization of the
United Nations



World Organisation
for Animal Health
Founded as OIE

