



Food and Agriculture
Organization of the
United Nations



World Organisation
for Animal Health
Founded as OIE



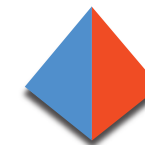
Funded by
the European Union

1st GF-TADs Regional Conference in the European region

Committee of veterinary control and
supervision of the Ministry of Agriculture
of the Republic of Kazakhstan

Azamat Umirkul

22-25/September/2025, Belgrade, Serbia



GF-TADs

GLOBAL FRAMEWORK FOR THE
PROGRESSIVE CONTROL OF
TRANSBOUNDARY ANIMAL DISEASES



Food and Agriculture
Organization of the
United Nations



World Organisation
for Animal Health
Founded as OIE

GEOGRAPHICAL MAP OF THE REPUBLIC OF KAZAKHSTAN AND CATTLE POPULATION



North–South
1,600 km
West–East
3,000 km

Cattle
Population:
9,142,439
head

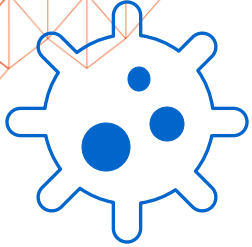
All four
seasons are
distinctly
expressed

9th place in
the world by
territory –
2.72 million
km²

A total of 17
regions

45% of the
gross
agricultural
production
comes from
livestock

CONTROL MEASURES AGAINST THE SPREAD OF LUMPY SKIN DISEASE



Kazakhstan reported an outbreak of lumpy skin disease (LSD) in cattle on **7 July 2016** in Makash village, Kurmangazy district, Atyrau region

COMPLEX OF VETERINARY AND QUARANTINE MEASURES

QUARANTINE IMPOSED

EMERGENCY ANIMAL VACCINATION AGAINST LUMPY SKIN DISEASE

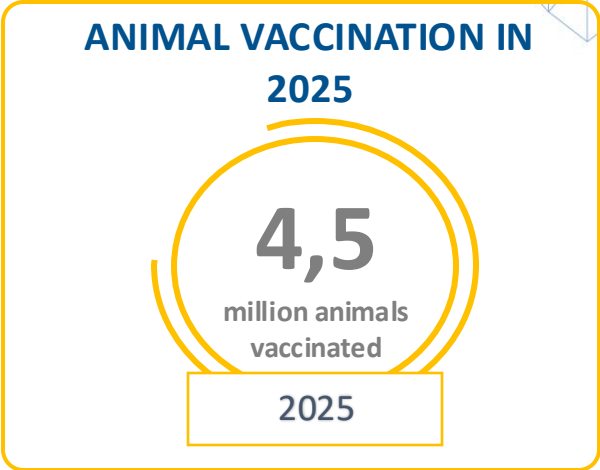
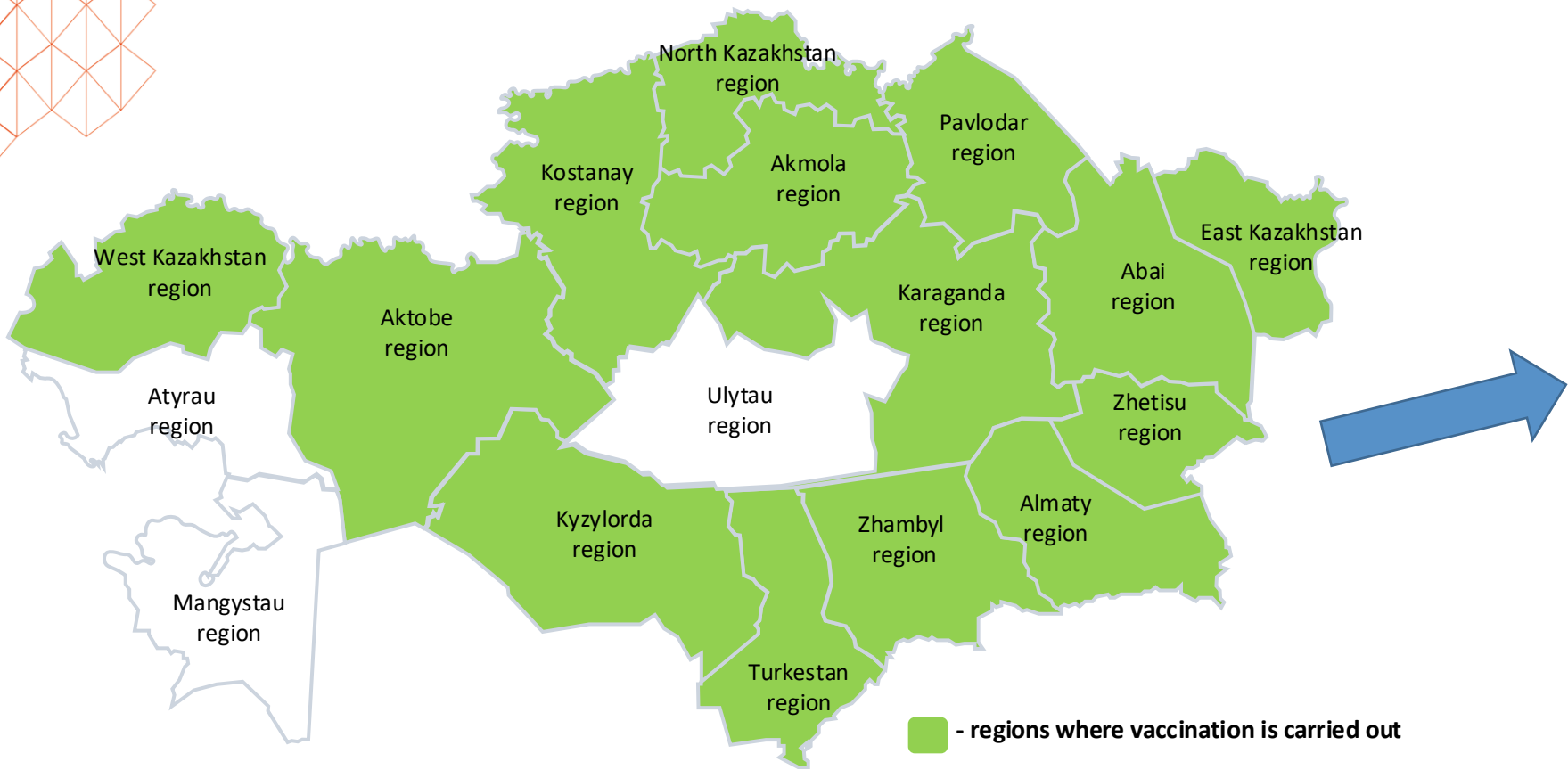
ZONING MEASURES IN ATYRAU REGION

LIVESTOCK PREMISES HAVE BEEN DISINFECTED

BAN IMPOSED ON THE MOVEMENT (IMPORT/EXPORT) OF ANIMALS, ANIMAL PRODUCTS,
AND RAW MATERIALS OF ANIMAL ORIGIN

BAN ON TRADE IN ANIMALS, ANIMAL PRODUCTS, AND RAW MATERIALS OF ANIMAL ORIGIN

VACCINATION AGAINST LUMPY SKIN DISEASE



VIRUS STRAIN



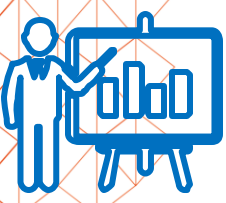
Neetling-RIBSP



VACCINE MANUFACTURER:
«Scientific research institute for Biological Safety Problems»



LUMPY SKIN DISEASE SIMULATION EXERCISES



SIMULATION EXERCISES ON THE ERADICATION OF LUMPY SKIN DISEASE WERE CARRIED OUT IN KARAGANDA REGION FROM 20 TO 22 AUGUST 2025



IN TOTAL, THE EXERCISES INVOLVED

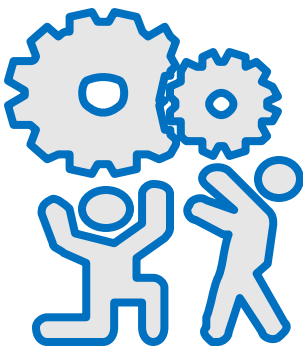


76 staff members of the veterinary service



9 units of transport vehicles

DURING THE EXERCISES, THE FOLLOWING ASPECTS WERE PRACTICED



- 1** *Interagency cooperation during emergency situations*
- 2** *Organizational aspects of occurrence, diagnosis, notification, containment, eradication, and prevention of lumpy skin disease.*
- 3** *Evaluation of the readiness of regional and district veterinary service units in case of emergencies*
- 4** *Skills were acquired in field operations for the deployment and organization of eradication activities at a lumpy skin disease outbreak site, including defining the boundaries of the affected area and implementing control measures at State Border crossing points*
- 5** *Practical skills were gained in operating modern disinfection equipment and installations, and in applying contemporary personal protective equipment in the course of operations*

EPIDEMIOLOGICAL SURVEILLANCE

No	Region	Number of surveyed districts	Number of settlements (epidemiological units) surveyed	Number of animals tested	Date of sample examination	Number of positive results
1	Akmola	1	1	24	21.02-25.02.24	0
2	Abai	1	1	23	20.06.2025-27.06.2025	0
3	Aktobe	1	1	1	16.07.2025-18.07.2025	0
4	West Kazakhstan	1	1	2	16.04.2025-23.04.2025	0
5	Karaganda	2	2	4	29.04.2025-12.02.2025 16.07.2025-18.07.2025	0
6	Ulytau	1	2	2	29.05.2025-10.06.2025 16.06.2025-24.06.2025	0
	Total:	7	8	56		0

As part of active surveillance for the circulation of lumpy skin disease virus in 2025, real-time PCR was applied. Sampling sites were determined by random selection in settlements of the western regions of the Republic of Kazakhstan, since cases of LSD among cattle had been recorded in Atyrau Region in 2016. Whole blood samples preserved in 10% EDTA were collected from cattle, regardless of age and sex, at a rate of three random samples per herd.

TEST KITS APPLIED IN 2025

No	Product name	Diagnostic technique	Manufacturer
1	“AsurDx™ Capripox Antibody Test Kit / ELISA test system ‘AsurDx™’ for the detection of antibodies to Capripox virus”	ELISA	«BioStone Animal Health LLC», USA
2	For molecular biological studies, the test system ‘PCR-NODULAR- DERMATITIS-CATTLE-FACTOR’ was used for the detection of lumpy skin disease virus (LSDV) DNA by real-time PCR.	PCR	LLC “VET-FACTOR”, Russian Federation

In cases of suspected lumpy skin disease, samples are sent to the National reference center for veterinary (NRCV). For serological studies using ELISA, blood serum samples are submitted, while for PCR, samples of skin lesion scrapings or whole blood are submitted. To rule out lumpy skin disease, 56 PCR tests and 41 ELISA tests were carried out over the first eight months of 2025



Food and Agriculture
Organization of the
United Nations

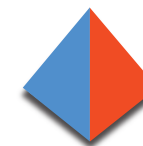
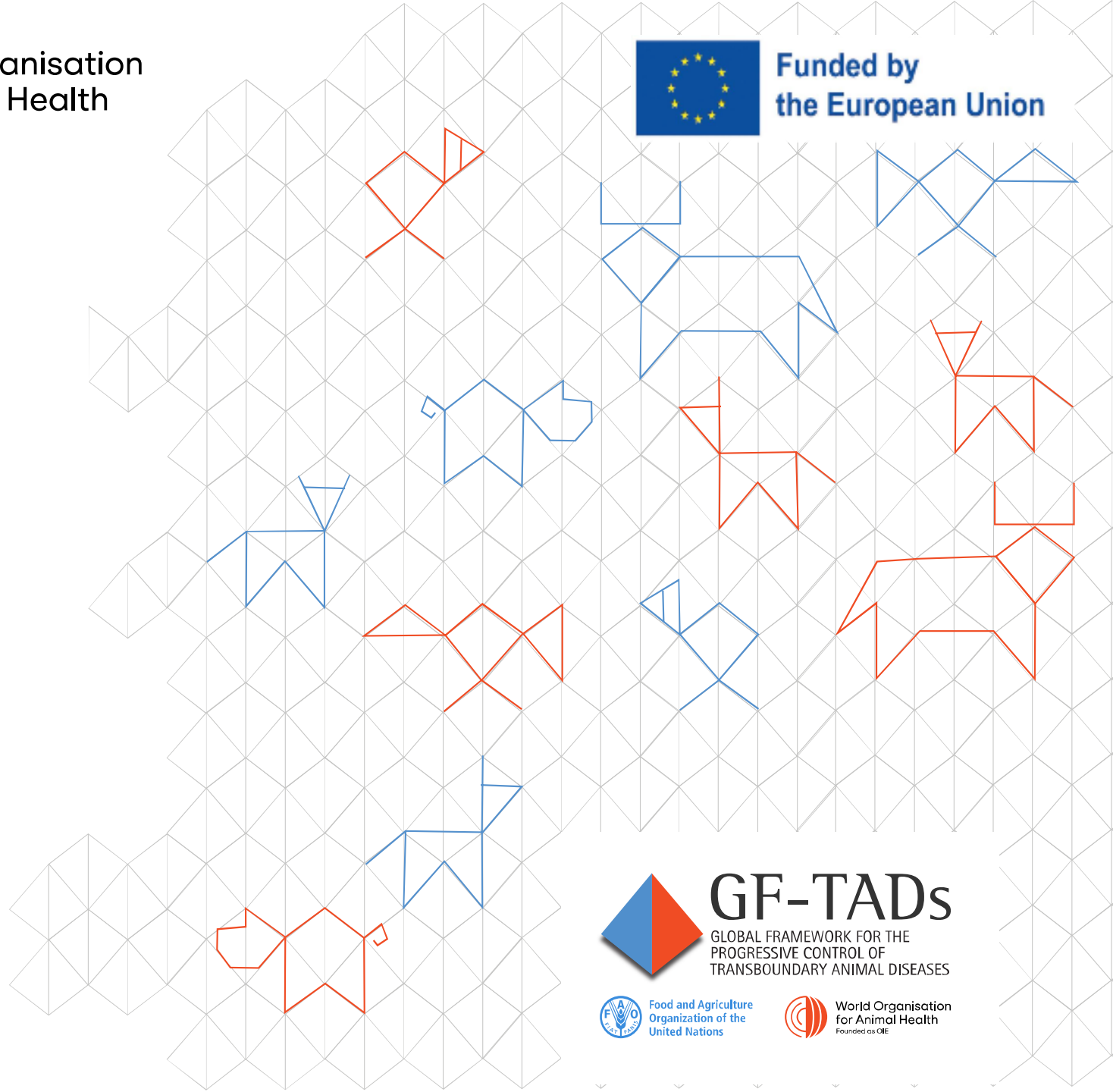


World Organisation
for Animal Health
Founded as OIE



Funded by
the European Union

THANK YOU



GF-TADs

GLOBAL FRAMEWORK FOR THE
PROGRESSIVE CONTROL OF
TRANSBOUNDARY ANIMAL DISEASES



Food and Agriculture
Organization of the
United Nations



World Organisation
for Animal Health
Founded as OIE