

Epidemiological situation on Vector Borne Diseases in Europe

Paolo Tizzani
Senior Veterinary Epidemiologist

Data Integration Department



World
Organisation
for Animal
Health

Organisation
mondiale
de la santé
animale

Organización
Mundial
de Sanidad
Animal



183 Members

122 listed diseases
Domestic animals
and wildlife

91 terra

31 aqua

3 Emerging
diseases

Emerging Diseases

High Pathogenicity Avian Influenza
(HPAI) in cattle

Type of animals

Terrestrials

Emerging Diseases

Infection with covert mortality
nodavirus (CMNV)

Type of animals

Aquatics, Fish

Emerging Diseases

Infection with Enterocytozoon
hepatopenaei

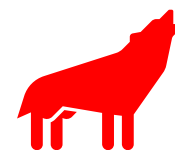
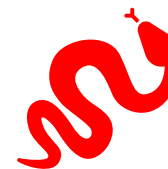
Type of animals

Aquatics, Crustaceans

Useful links



53 Non-listed
diseases in
wildlife





Reporting LISTED Diseases



User-friendly, intuitive,
time-efficient



High resolution dynamic
mapping



Open access to WAHIS
data



<https://wahis.woah.org>

Facilitates reporting, promotes the use of data



WAHIS – Data collection

122 listed diseases
Domestic animals
and wildlife

3 Emerging
diseases

183 Members

Early warning system



Immediate notifications
Follow-up reports
Final reports

Monitoring system



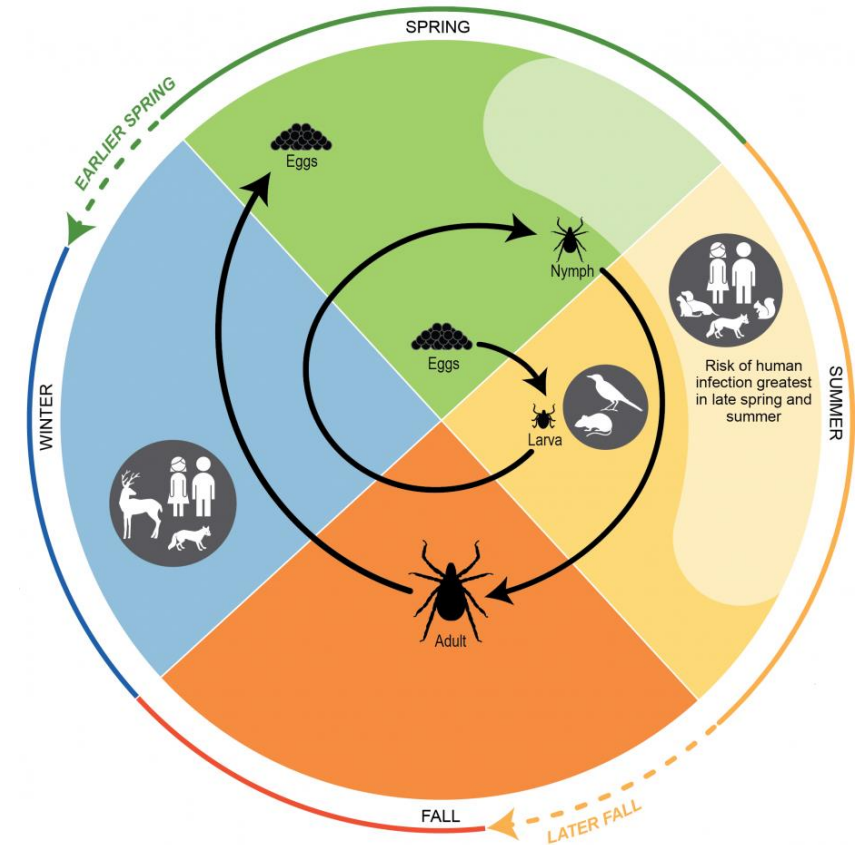
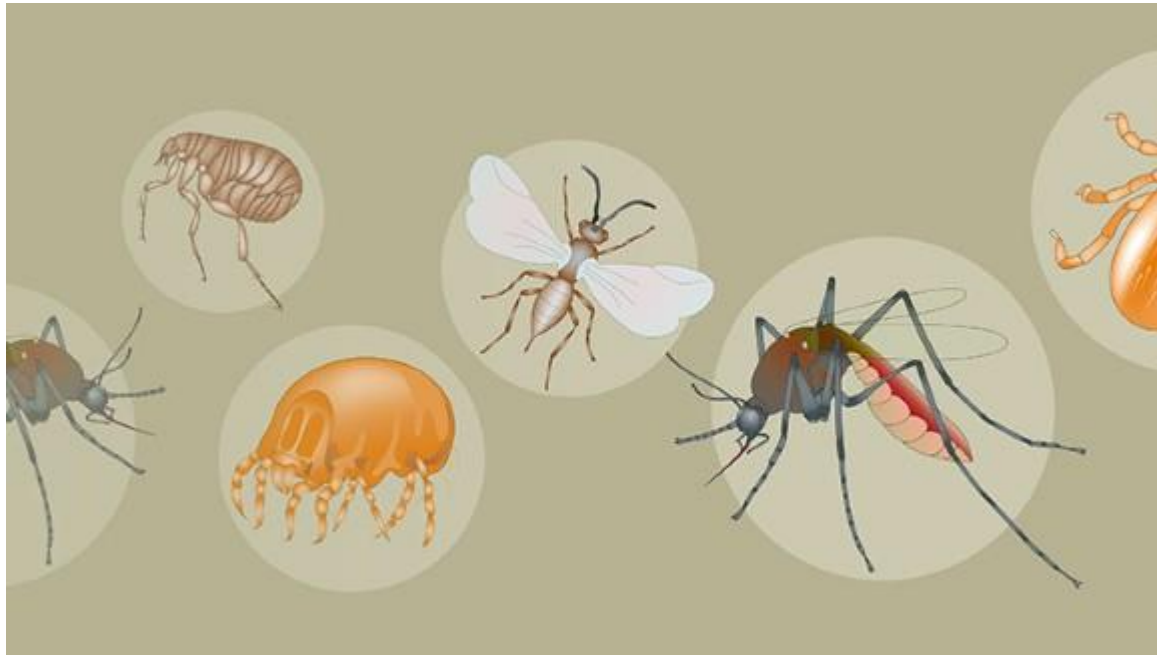
Six-monthly
reports

WOAH-listed diseases





Around 27 Vector borne diseases





91st General Session
World Organisation for Animal Health

World Assembly
Paris, 26-30 May 2024



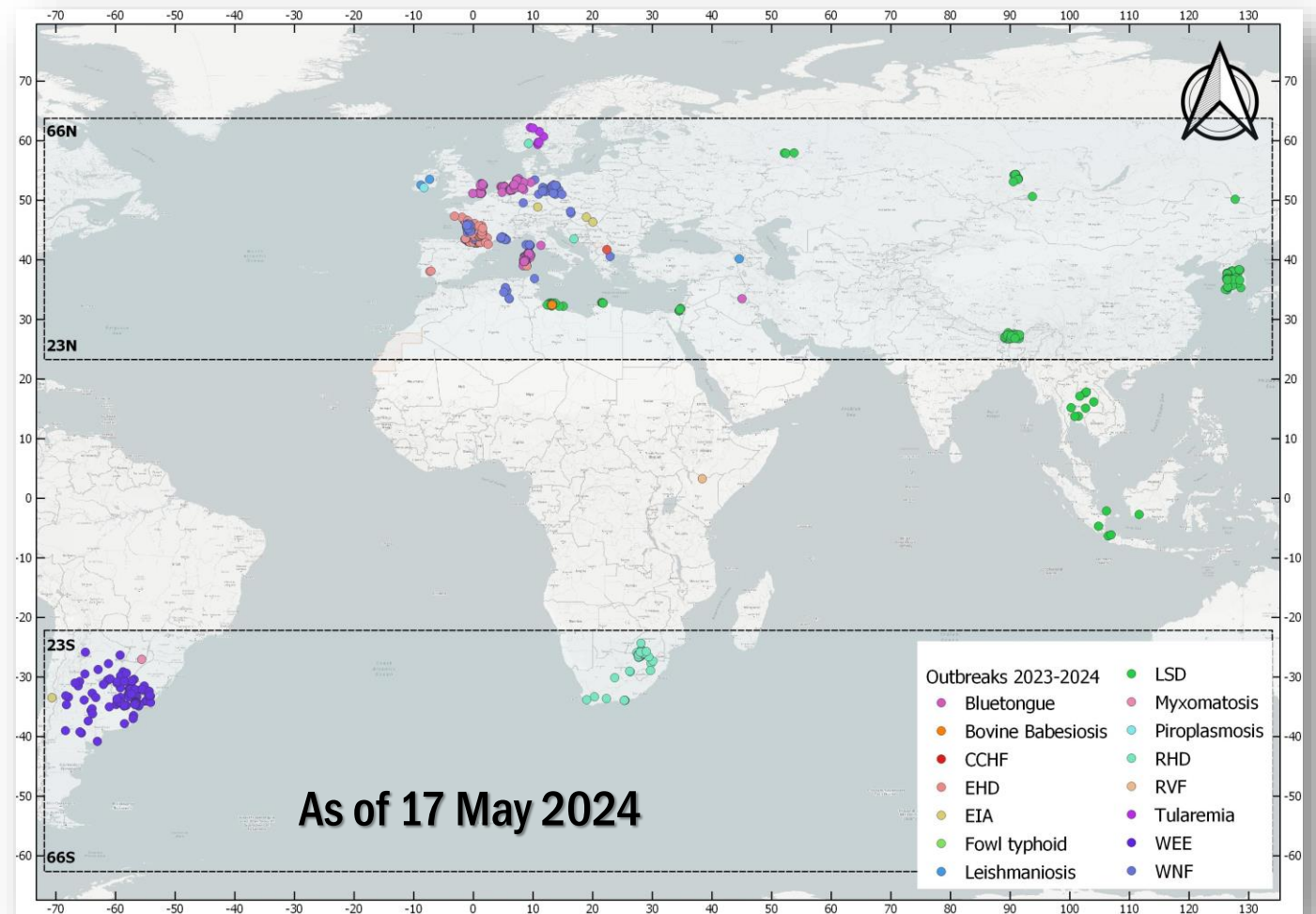
91GS/Tech-01/En
Original: English
April 2024

Animal Health Situation Worldwide

[Technical Working Document]

Data source : [WAHIS](#) early warning

Evolution in 2023-2024



Effect of climate change?

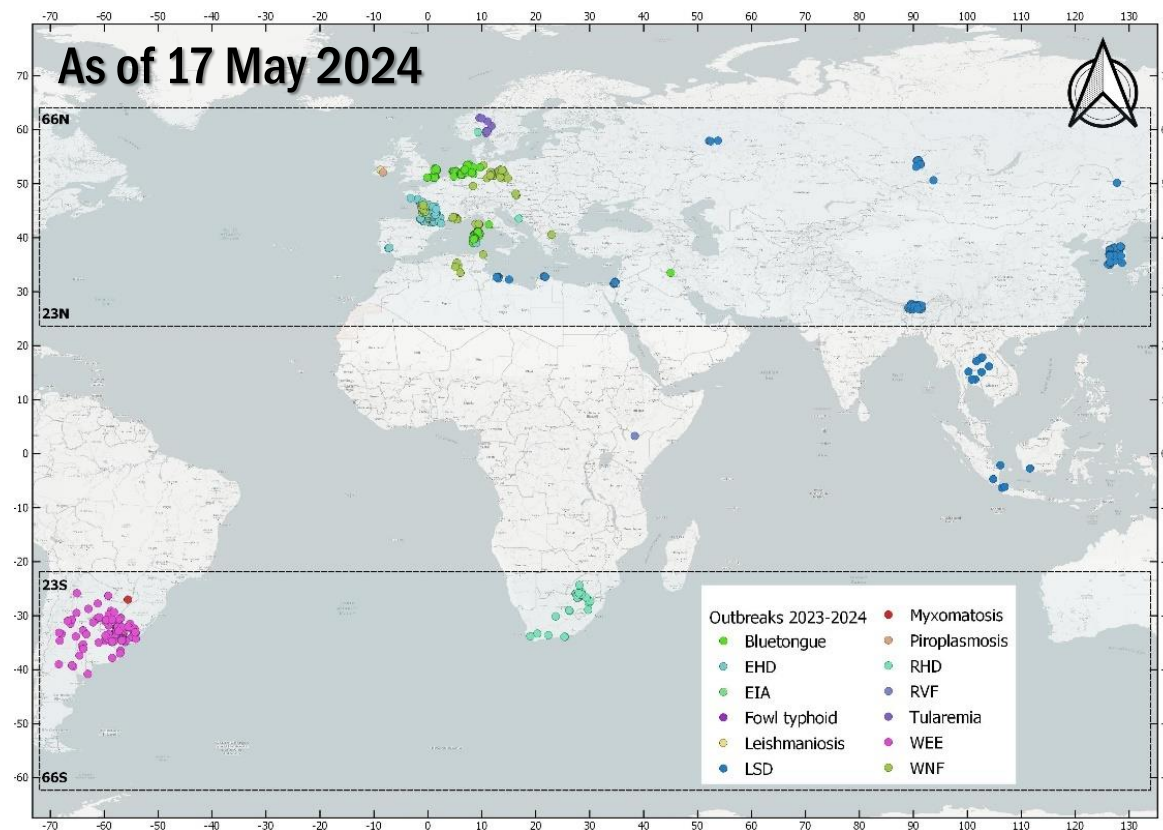
99% of the 2,501 VBD outbreaks in 2023-2024 were reported in temperate regions (exceptional events)



Analysis of the **maximum latitude** and comparison with trend of the **global temperature anomalies**
(National Centres for Environmental Information)



- increasing trend in the maximum latitude of the VBD outbreaks reported over the years
- positive correlation between maximum latitude and temperature anomalies, stronger every year

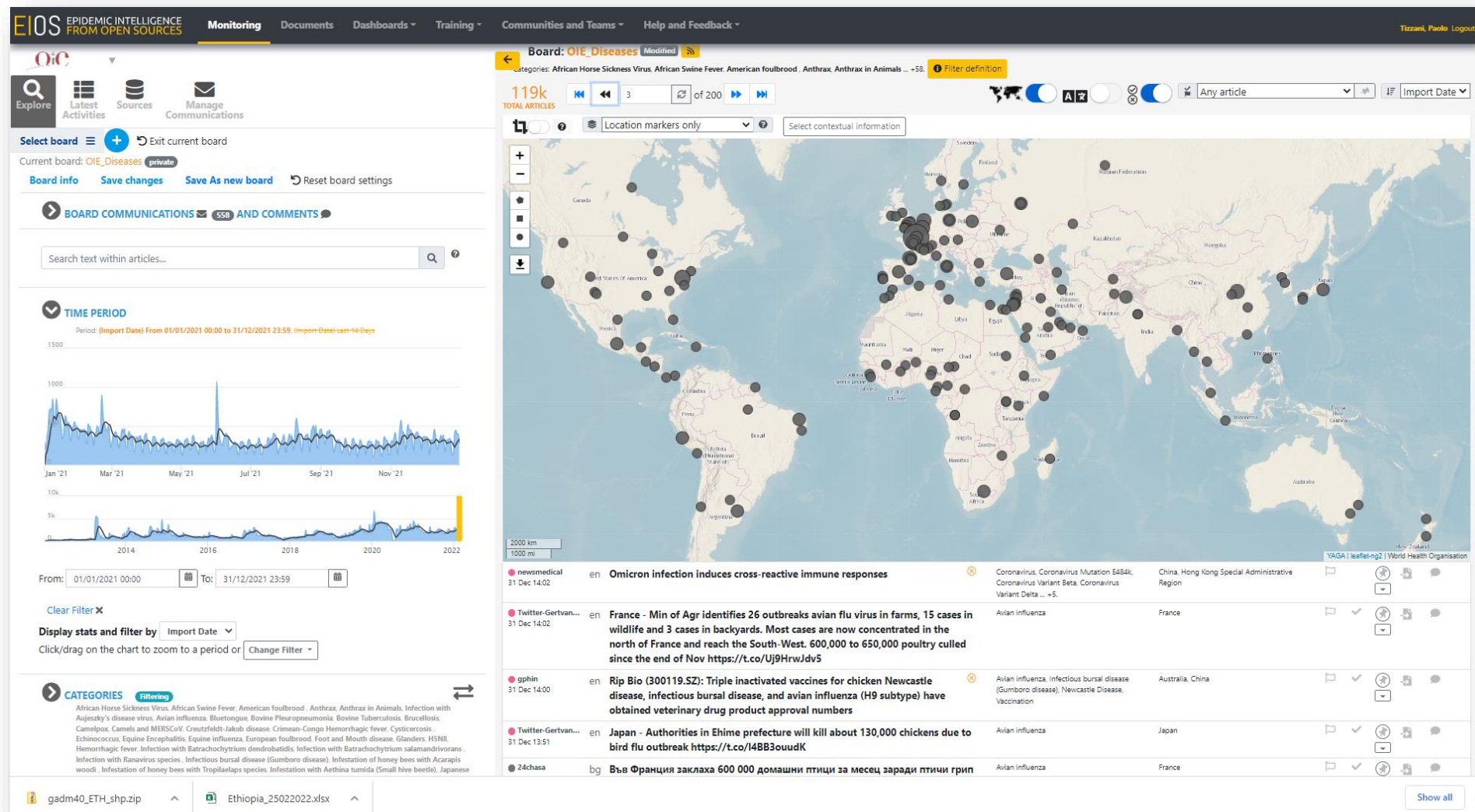




Epidemic intelligence (EI) activity

EIOS EPIDEMIC INTELLIGENCE
FROM OPEN SOURCES

- EIOS system for epidemic intelligence
- Daily screening of the web for all listed diseases
- Communication between WOA and Members

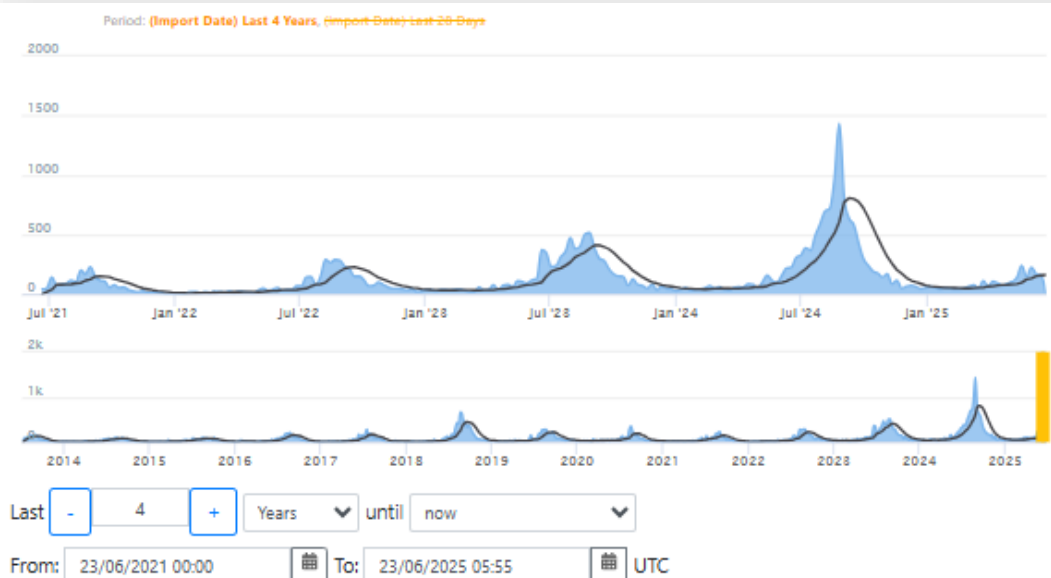




Epidemic intelligence (EI) activity

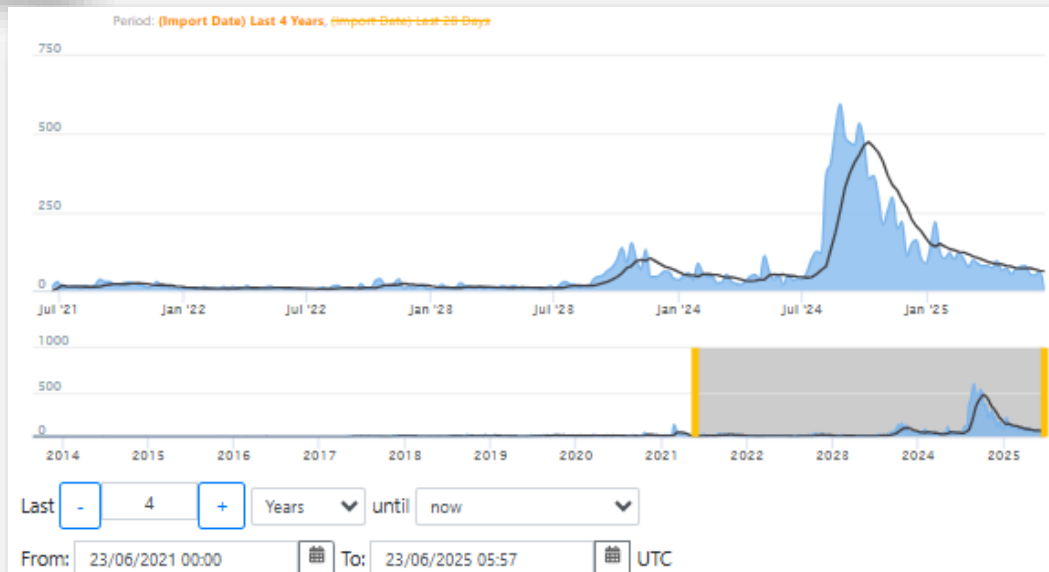
9

West Nile Fever



EIOS EPIDEMIC INTELLIGENCE
FROM OPEN SOURCES

Bluetongue

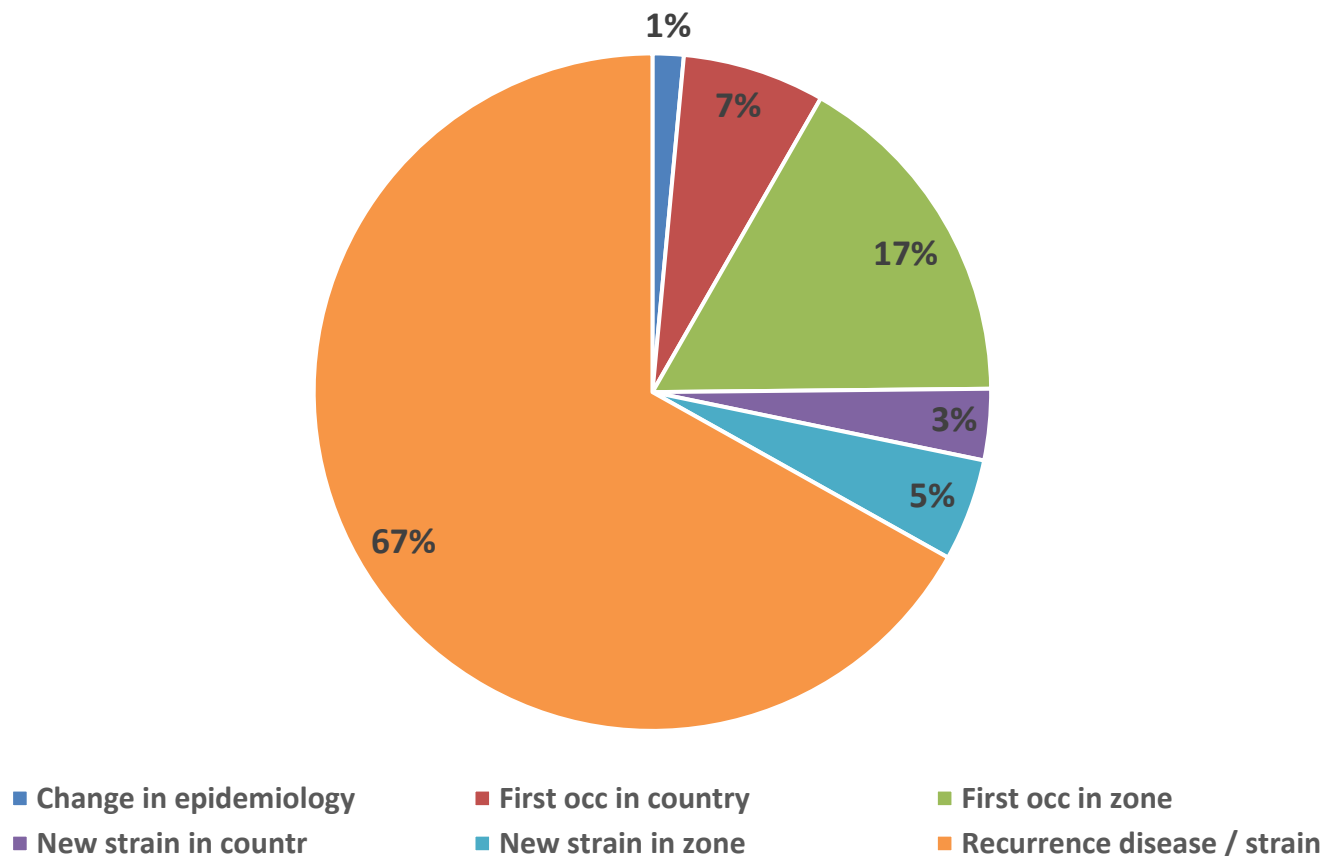




VBD evolution in time since 2005 – Early warning system

833 IN since 2005
471 (56%) in Europe

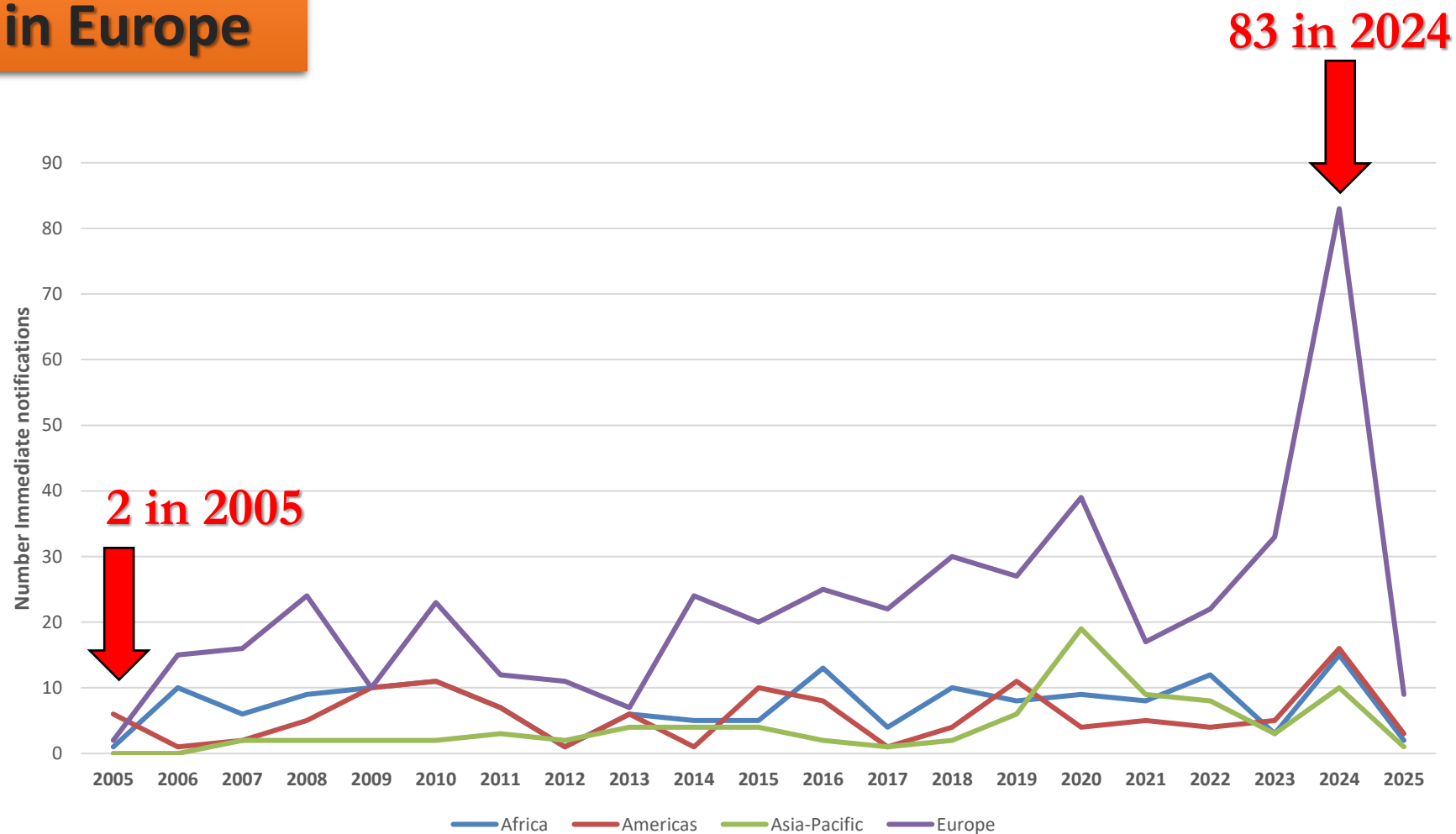
Region	Numb. IN
<i>Africa</i>	155
<i>Americas</i>	121
<i>Asia - Pacific</i>	86
<i>Europe</i>	471





VBD evolution in time since 2005 – Early warning system

833 IN since 2005
471 (56%) in Europe

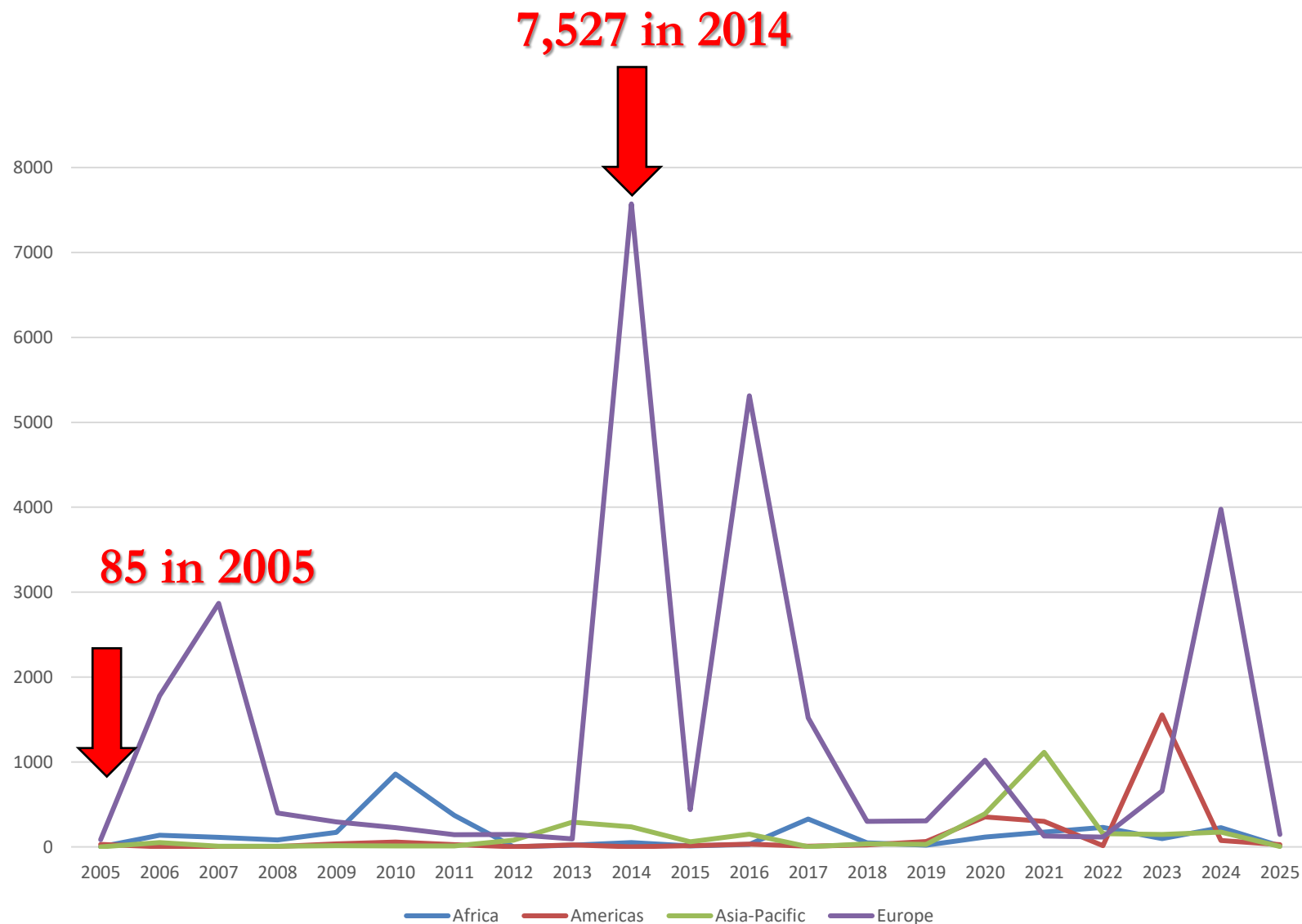




VBD evolution in time since 2005 – Early warning system

**36,247 outbreaks since
2005
27,530 (76%) in
Europe**

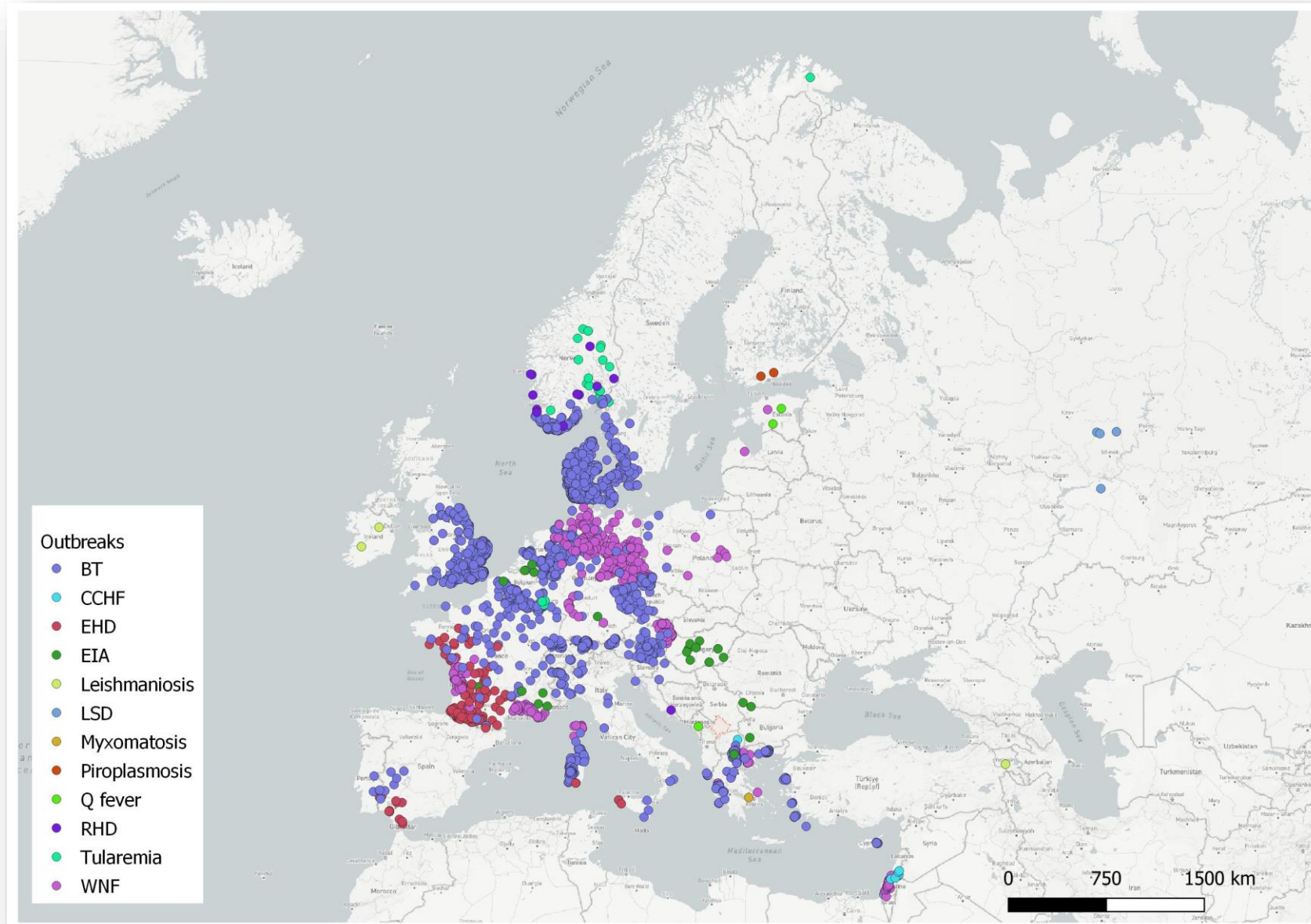
**1,006,502 cases since
2005
262,453 (26%) in
Europe**





**4,895 outbreaks since
2022
12 diseases**

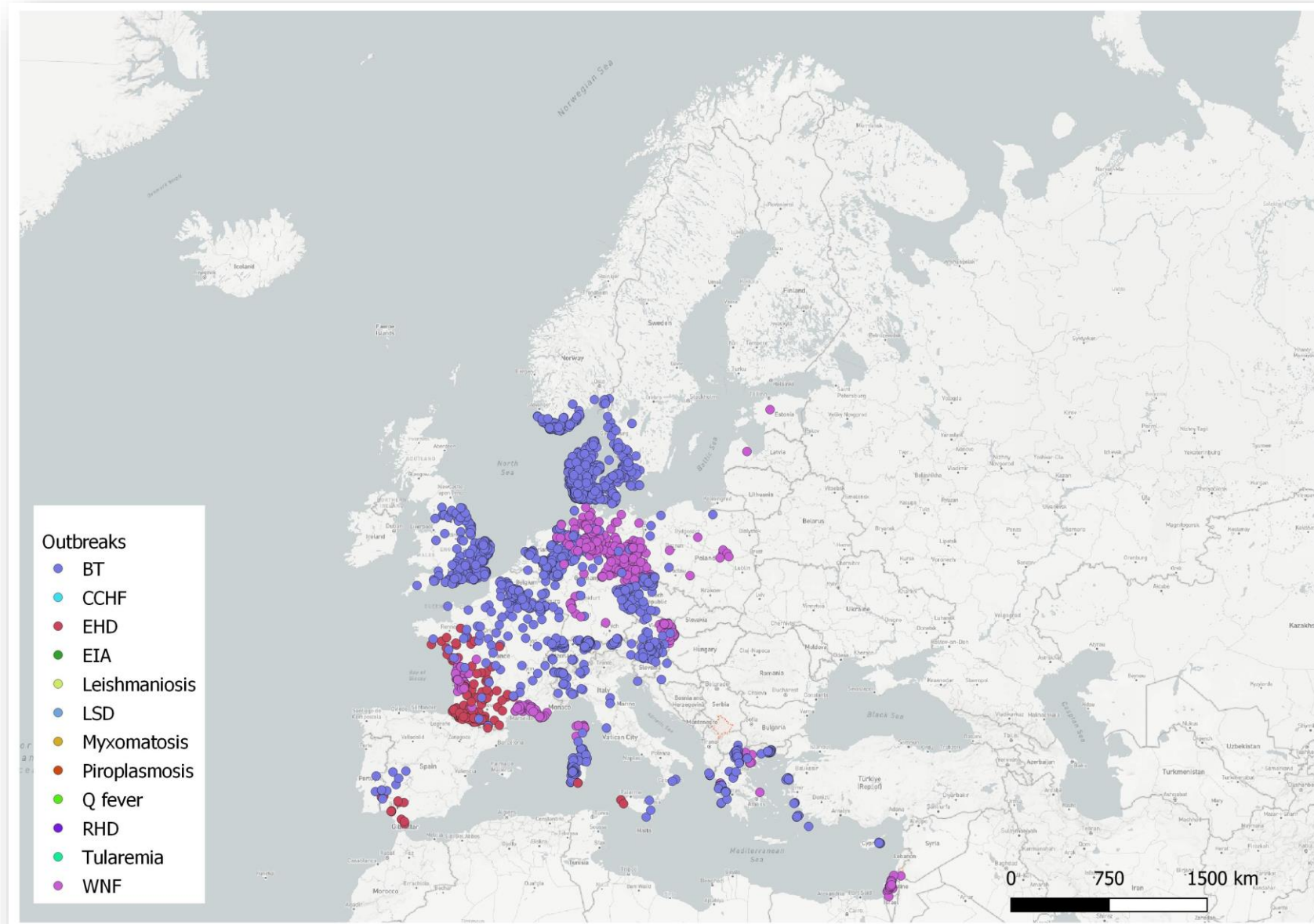
Disease	N outbreaks
<i>BT</i>	3936
<i>WNF</i>	581
<i>EHD</i>	271
<i>EIA</i>	30
<i>LSD</i>	29
<i>Tularemia</i>	23
<i>RHD</i>	13
<i>CCHF</i>	3
<i>Leishmaniosis</i>	3
<i>Q fever</i>	3
<i>Piroplasmosis</i>	2
<i>Myxomatosis</i>	1





**4,895 outbreaks since
2022
12 diseases**

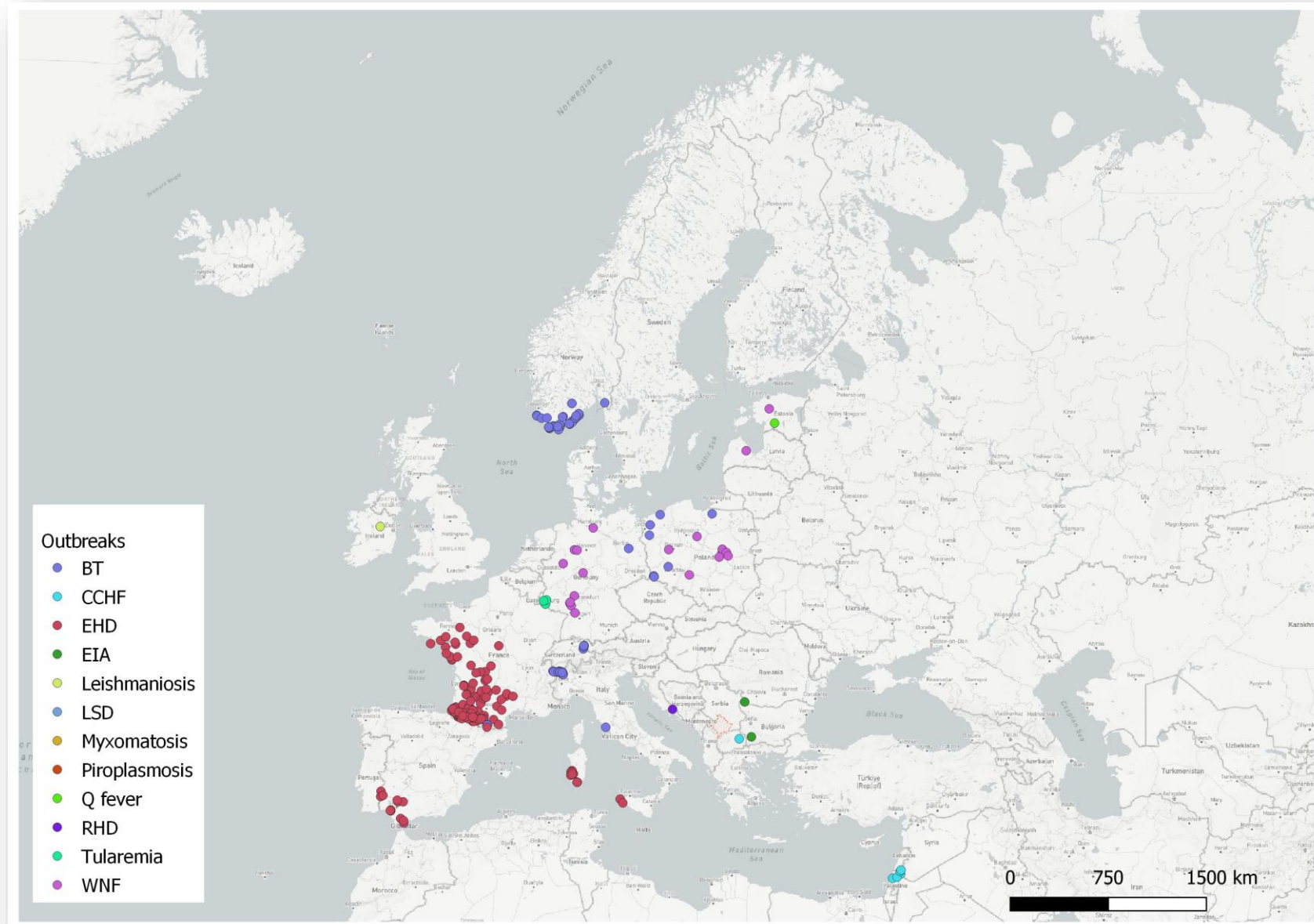
Disease	N outbreaks
BT	3936
WNF	581
EHD	271
EIA	30
LSD	29
Tularemia	23
RHD	13
CCHF	3
Leishmaniosis	3
Q fever	3
Piroplasmosis	2
Myxomatosis	1





**4,895 outbreaks since
2022
12 diseases**

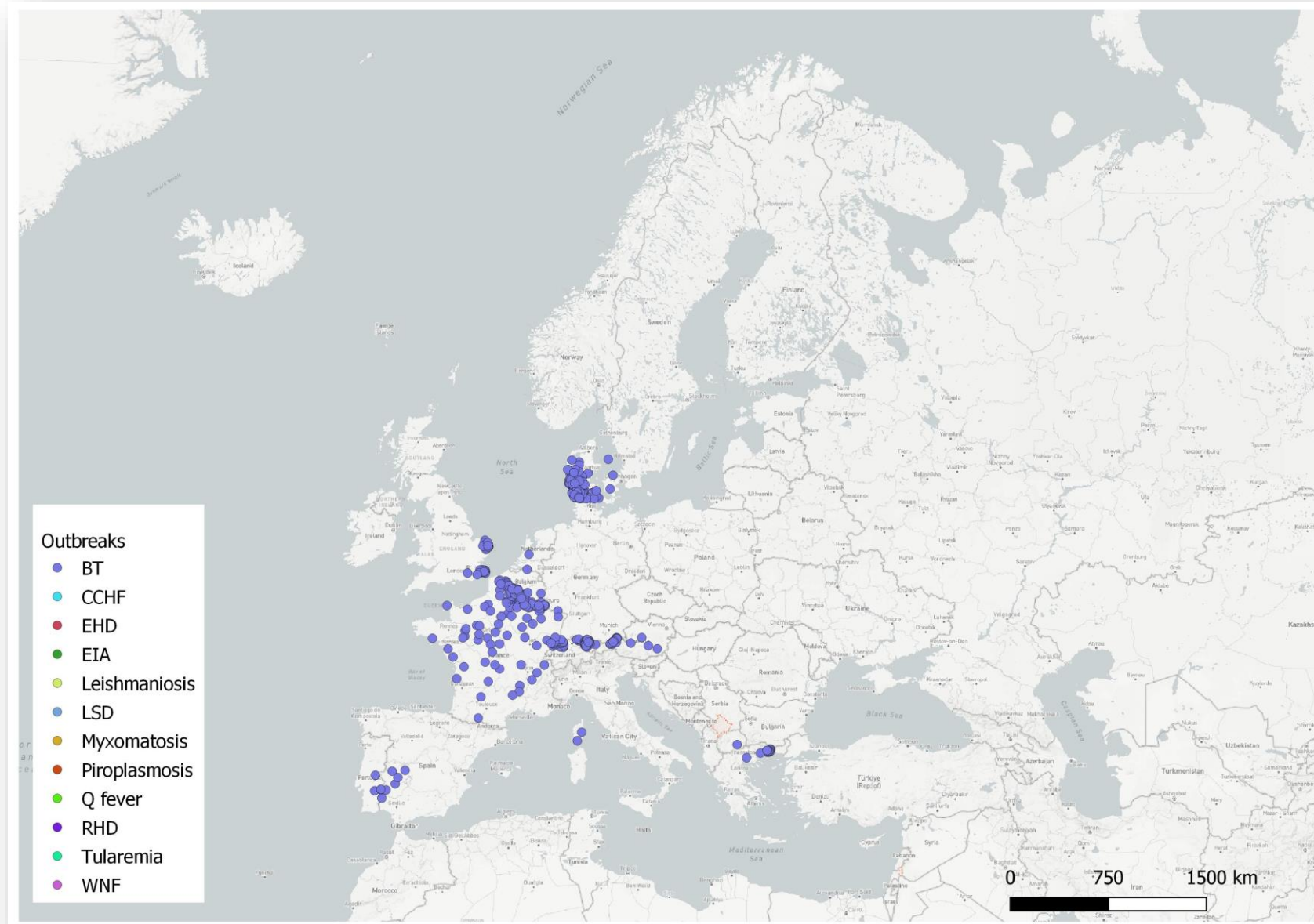
Disease	First occ in country	First occ in zone
BT	47	24
CCHF	2	1
EHD	269	2
EIA	0	2
Leishmaniosis	0	1
LSD	0	3
Q fever	1	0
RHD	1	0
Tularemia	4	0
WNF	10	10





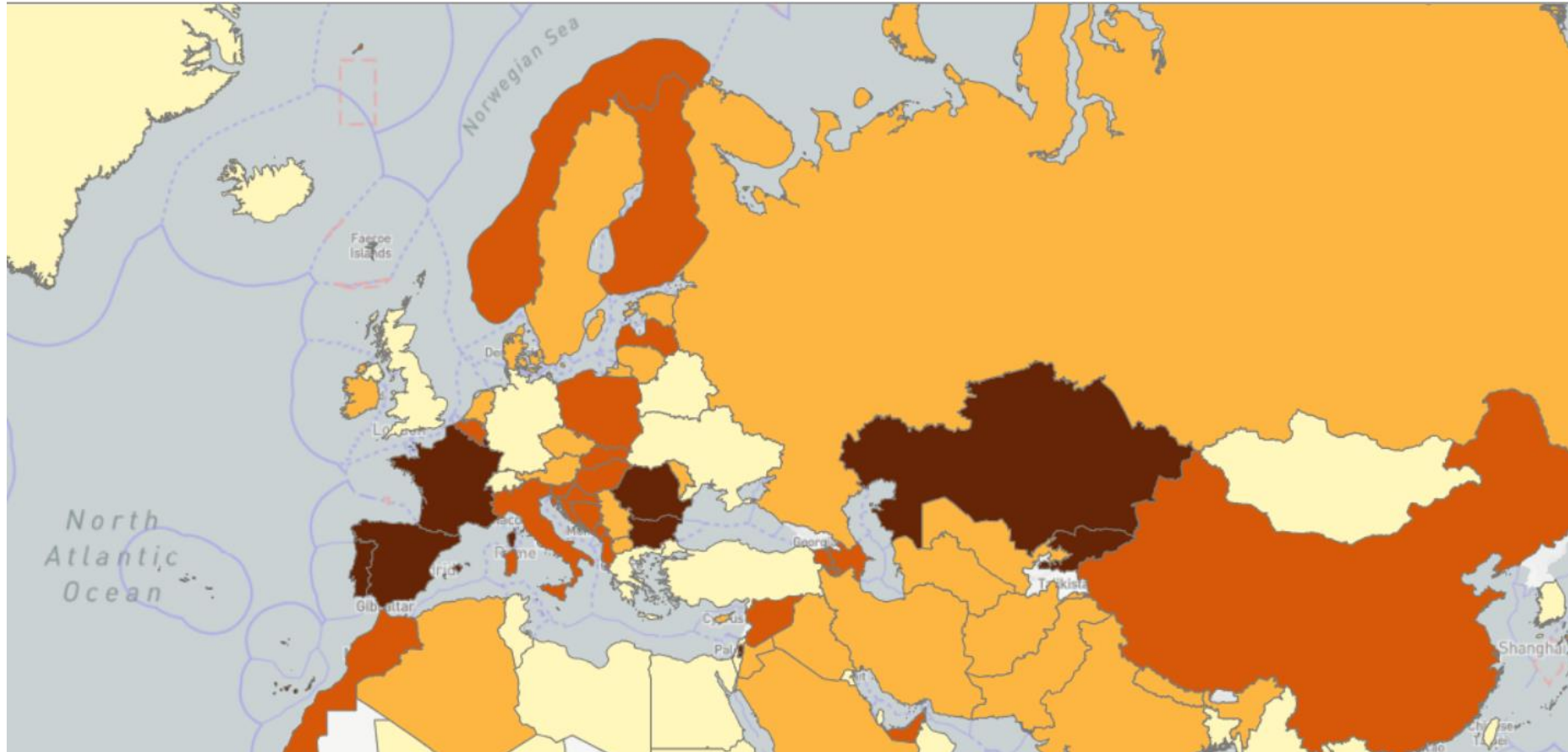
**4,895 outbreaks since
2022
12 diseases**

Disease	BT
New strain in country	1443
New strain in zone	246



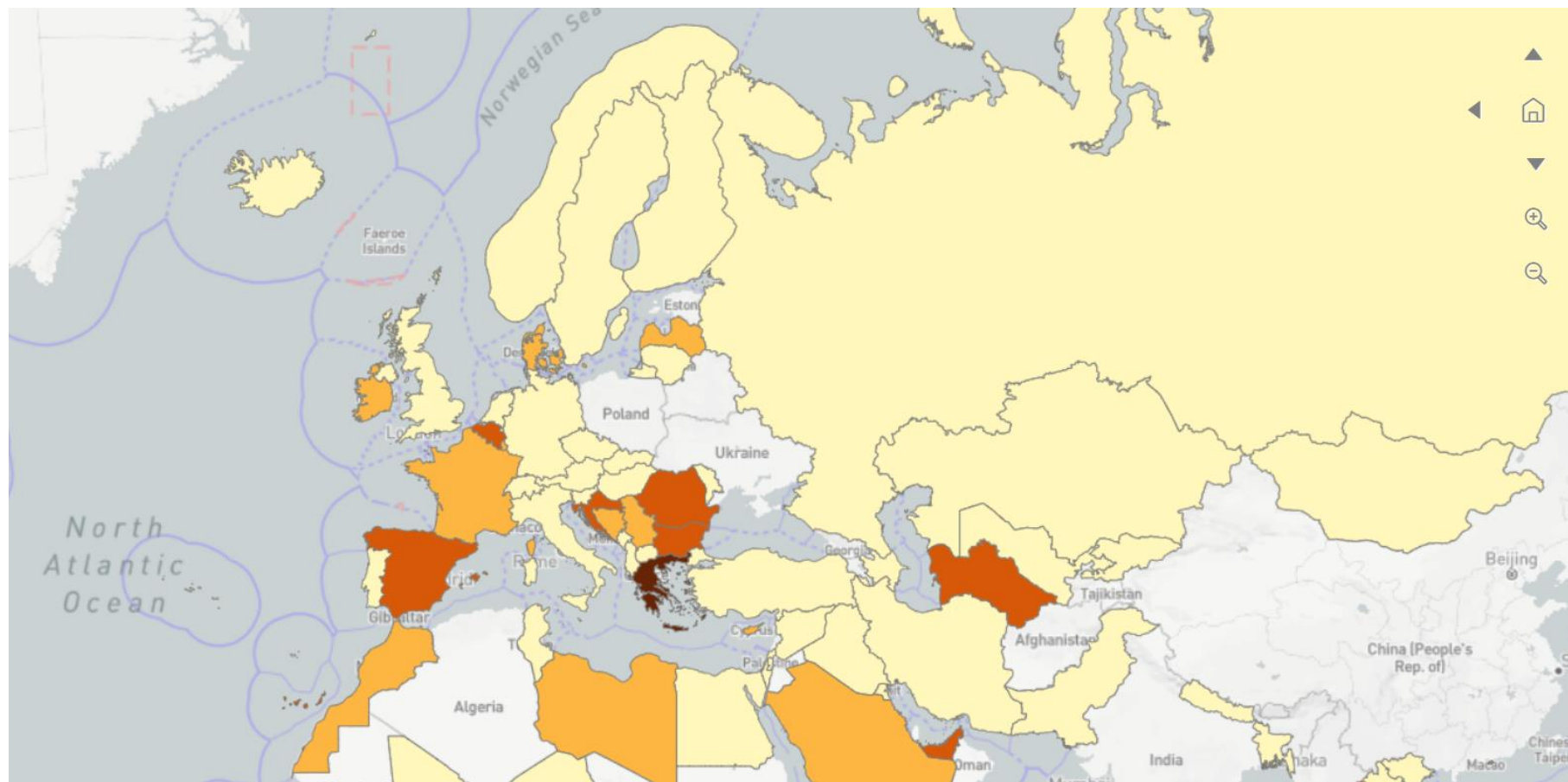


Surveillance





Surveillance



*** General surveillance, Targeted surveillance, Screening, Monitoring**

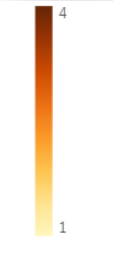


Surveillance



*** General surveillance, Targeted surveillance, Screening, Monitoring**





*** General surveillance, Targeted surveillance, Screening, Monitoring**



Key points

- VBDs represent a **significant proportion (30%)** of the WOAHA listed diseases
- VBD reported more and more frequently at **higher latitudes**
- **Since 2005**, Europe has reported around **60% of exceptional events** linked to VBD, with a significant increase in recent years
- From **2022 to 2025**, three diseases (**BT, WNF and EHD**) accounted for **98%** of reported exceptional epidemiological events
- The level of **surveillance varies** across the region depending on the disease
- This presentation focuses on **exceptional epidemiological events** and does not consider stable ones

Thank you

12, rue de Prony, 75017 Paris, France
T. +33 (0)1 44 15 19 49
F. +33 (0)1 42 67 09 87

woah@woah.int
www.woah.org

[Facebook](#)
[Twitter](#)
[Instagram](#)
[LinkedIn](#)
[YouTube](#)
[Flickr](#)



World
Organisation
for Animal
Health

Organisation
mondiale
de la santé
animale

Organización
Mundial
de Sanidad
Animal

