



World Organisation
for Animal Health



The WOAH approach to capacity building

VBD don't just emerge.
They are facilitated by
gaps in health systems

Competency Type

Terrestrial

Region

Europe

Country

All

Year of report

All

Fundamental Component

2-Technical authority and ...

Critical Competency

Multiple selections

Clear All Slicers

30047

Total Recommendations

709

Recommendations in
Selection

843

Umbrella Recommendations

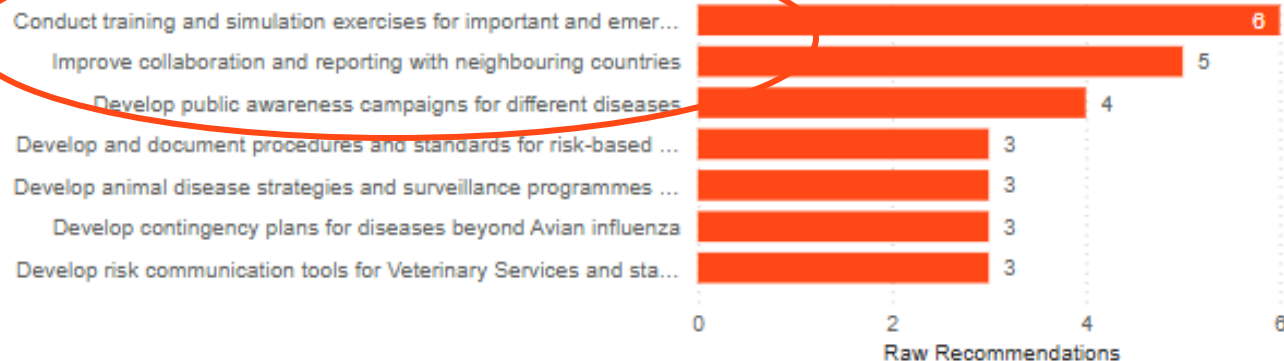
1788

Key Recommendations

Most Frequent Umbrella Recommendations



Most Frequent Key Recommendations



Tags



This visual is
under maintenance

Search

- ☐ II-13 Animal welfare
- ☒ II-2 Risk analysis and...
- ☐ II-3 Quarantine and ...
- ☒ II-4.A Passive surveill...
- ☒ II-4.B Active surveilla...
- ☒ II-5 Emergency prep...
- ☒ II-6 Disease preventi...

Tags Selected



This visual is
under maintenance

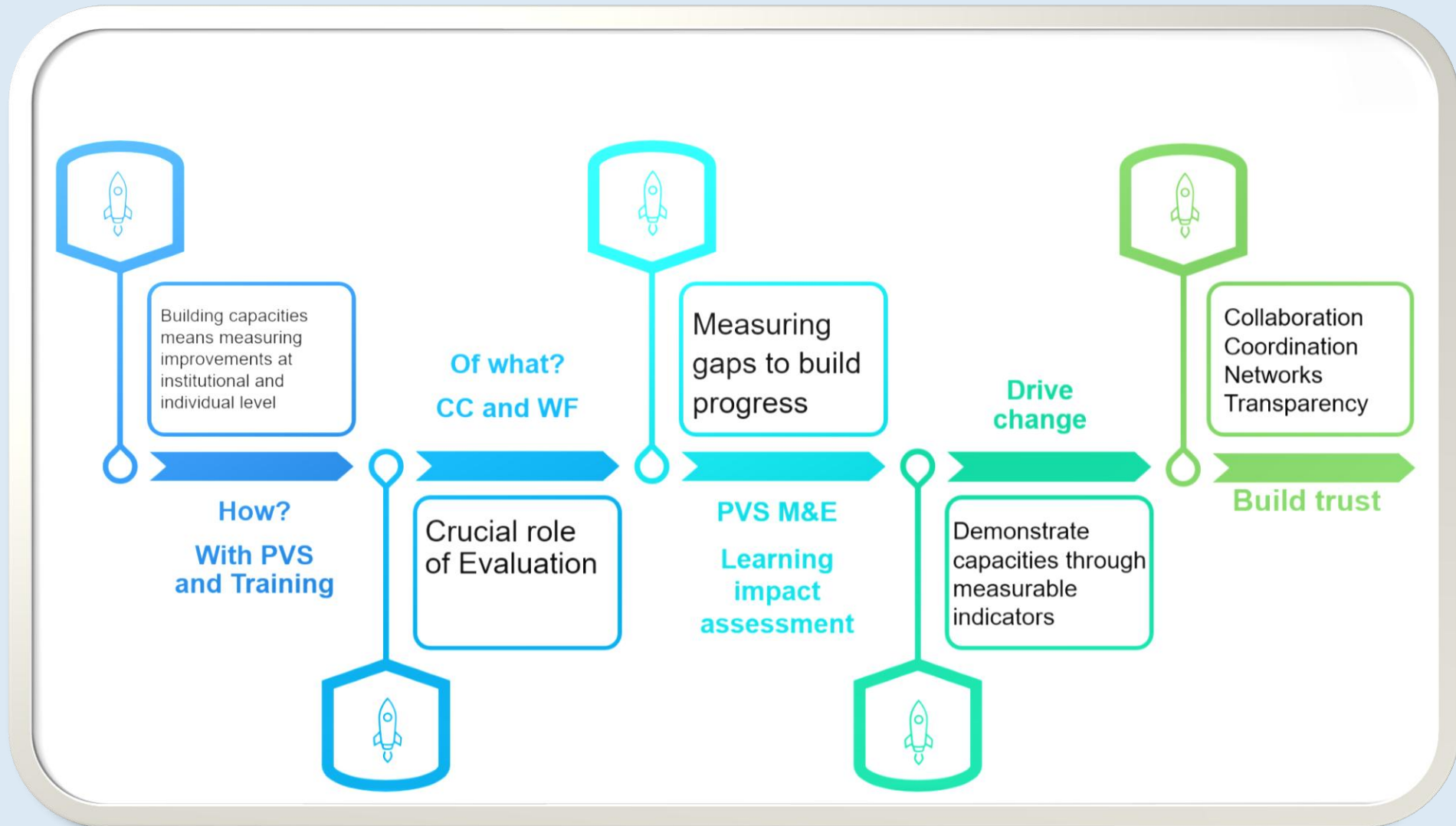
Recommendation

Report(s)

Search

II-2 Risk analysis and epidemiology	A risk analysis unit should be established in the state.
II-4.B Active surveillance and monitoring	Allocate financial resources for sampling equipment and data management throughout the whole system.
II-4.B Active surveillance and monitoring	Control of effectiveness of vaccination campaigns carried out by private practitioners.
II-5 Emergency preparedness and response	Coordinate with neighbouring countries in relation to contingency issues
II-6 Disease prevention, control and eradication	Follow and execute the 10-year strategic plan.
II-5 Emergency preparedness and response	Further improve communications with stakeholders,
II-4.B Active surveillance and monitoring	Improve system of official control of performance of field veterinary activities,
II-5 Emergency preparedness and response	The Veterinary Services should document evidence of national disease contingency plans for all diseases of concern.

The change



PVS Evaluation n Gap Analysis VWAT

PVS Evaluation

- Identify institutional strengths and gaps across Critical Competencies according to the WOAHP International Standards
- Make recommendations for concrete action

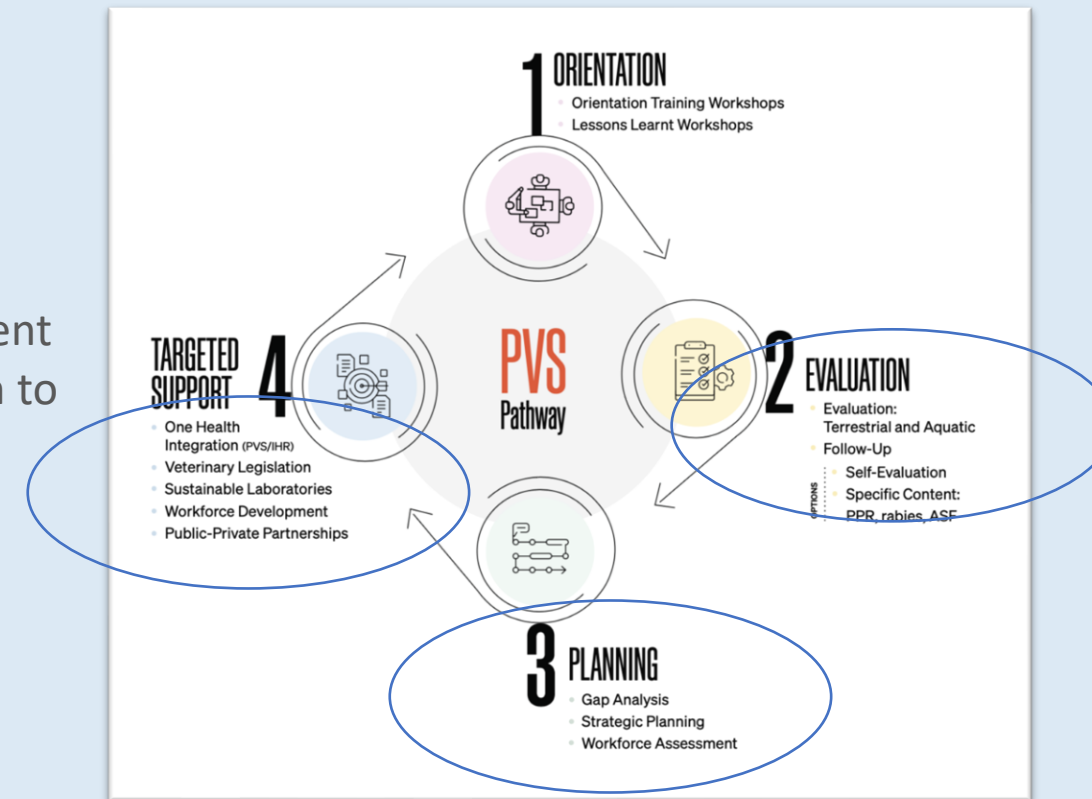
PVS Gap Analysis

- Set targets for performance improvement
- Cost activities for resource mobilization to inspire investment

VWAT

- Determine workforce needs for a functional Animal Health Services

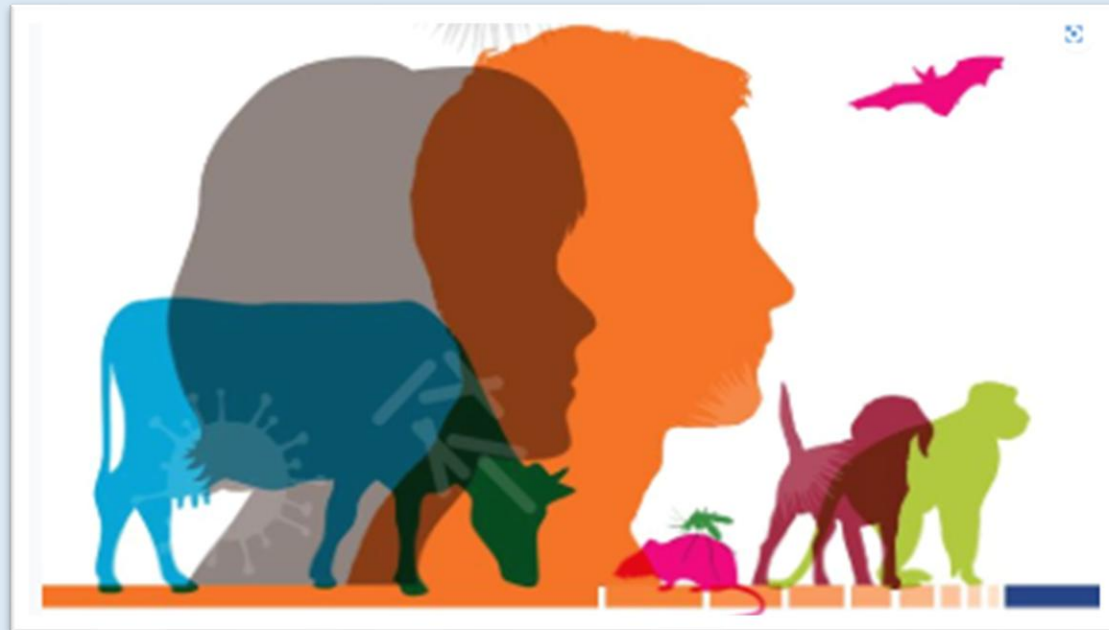
How do they
support VBD
management?



National Bridging Workshops

- Foster **mutual understanding** among human, animal and environment (HAE) sectors
- Facilitate discussions on **intersectoral collaboration**, and its strengths and weaknesses
- Formulates a **joint, consensual roadmap** with concrete activities with shared responsibilities
- The NBW roadmap serves to **operationalize multisectoral collaboration**, empowering the sectors to prevent, detect and control health threats, including zoonotic and vector-borne diseases at the HAE interface more effectively through a 'One Health' approach.

How do they
support VBD
management
+?





VLSP

How does it support VBD management?



Supports the legal framework for surveillance, prevention and control of animal diseases...

To provide:

- **powers and authorities** for the Veterinary Authority to efficiently carry out key functions (detection and rapid response to animal diseases; control of animal movement / trade, etc.)
- lists of reportable/notifiable diseases

To require:

- **disease reporting/notification**
- **training and continuing education** for veterinarians, VPPs and CAHWs
- intersectoral / One health collaboration
- Partnerships
- Wildlife
- Biothreat reduction



Sustainable laboratories

How do they support VBD management?

Develop the case for investment in sustainable national veterinary laboratory networks

- to evaluate overarching **requirements for sustainability**
- to maintain operations at a targeted level and achieve business continuity
- to propose strategic recommendations based on current and future demand for laboratory services
- to ensure that the **laboratory service needs of the Veterinary Services** can be met





PPP

Increase the participation of producers and other stakeholders in joint programmes for VBD management

Producers and other non-government stakeholders contribute resources and may lead the development and delivery of effective joint programmes with the VS. They also actively participate in their regular review, audit and revision.

How do they support improved VBD

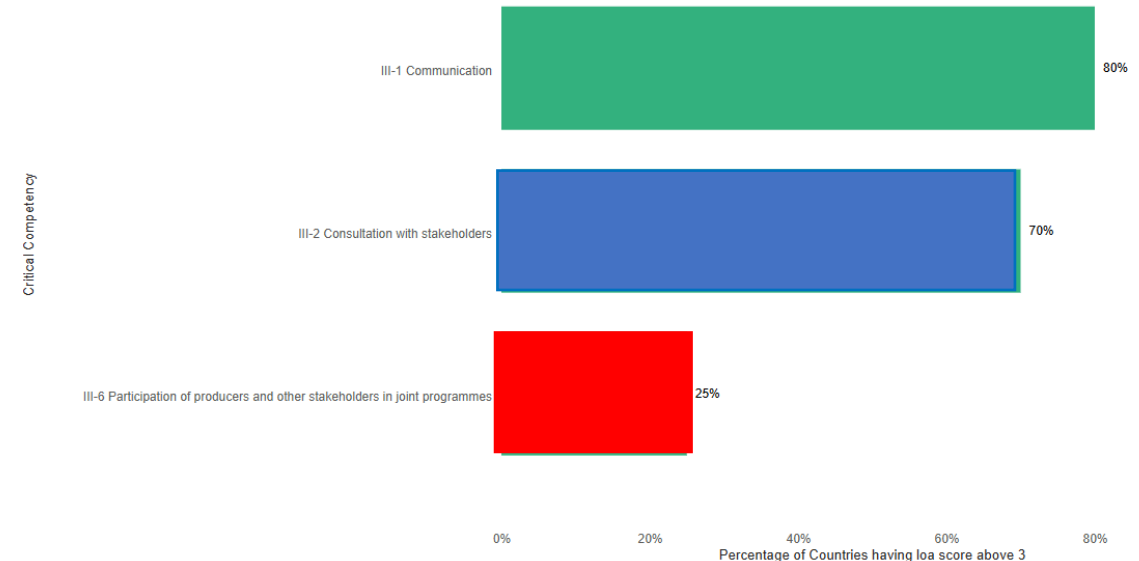
WOAH has gathered evidence that the **private sector is an integral part of the delivery of essential services** in the veterinary domain in many countries.

PPP Targeted Support is available for Members.

Customisable Cohort Analysis: PVS Achievement

[< Back](#)[< Back to report](#)

PERCENTAGE OF COUNTRIES HAVING LOA SCORE OF GREATER THAN OR EQUAL TO 3



PVS Insight

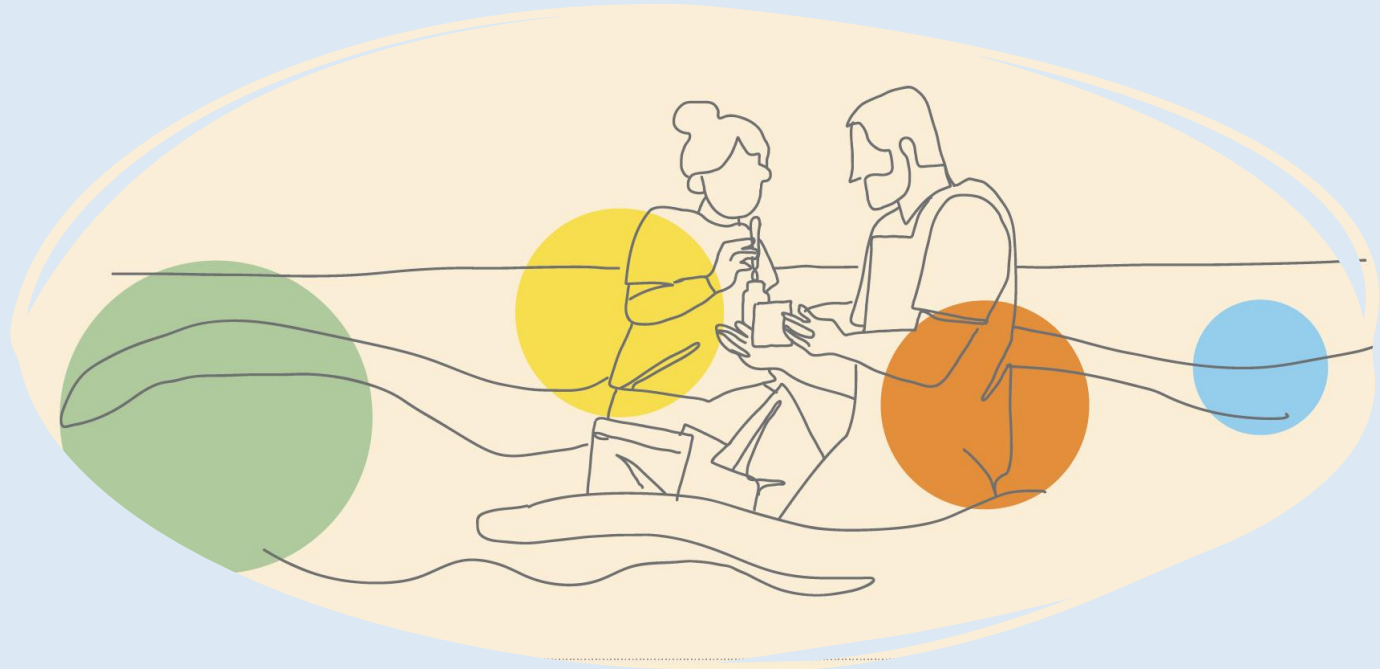
Critical competencies related to **communication** are efficient for **16 members**; **14 members** demonstrated effective stakeholder **consultation**. However, **participation of producers and other stakeholders in joint programs** was notably low, with **only 5 members** involved.



Investment in WF planning and developmen t

- VBD **don't just emerge**—they are enabled by **gaps in our systems**. And too often, the weakest link is a workforce not equipped, not present, or not empowered.
- Veterinarians, VPPs and CAHWs are **frontline epidemiologists, risk communicators, and community educators**.
- We can't scale up our response in a crisis if we haven't invested in people before the crisis
- Even the best policies and programmes for disease control fail without the workforce to deliver them.

Why are they
important for
VBD
management?



Workforce Development Programme

- **Workforce Assessment** can help estimate the number, distribution, and competencies of veterinary personnel, including their readiness for managing VBDs.
- **Country capacity for workforce mapping / planning ensures identification and coverage in high-risk** or underserved areas. It also helps ensure availability of experts such as in areas like vector biology and entomology.
- For sustained capacity, WOAH guides support educators for curriculum coverage (initial / continuous) of **needed VBD control related competencies**.
- Communication and advocacy related capacity building of VSBs can help empower veterinary personnel in vector control programs. (One health approach)

How do they support VBD management?





World
Organisation
for Animal
Health

Organisation
mondiale
de la santé
animale

Organización
Mundial
de Sanidad
Animal



#WOAHGS

WOAH Competency Based Training Framework



Competency Packages

12

40 online
eModules
under 16
Competency
Packages



CP 1

WOAH and its
Partners



CP 2

Quality of
Veterinary
Services and
Aquatic Animal



CP 3

Risk Analysis



CP 4

Laboratory
Services



CP 5

Animal Health
Management



CP 6

Emergency
Management



CP 7

Animal
Welfare



CP 8

Prudent Use of
Antimicrobials
and Other



CP 9

Emerging
Risks



CP 10

Partnership



CP 11

One Health



CP 12

Trade of
Animals and
animal products



CP 13

Food Safety



CP 14

Economics of
Animal Health



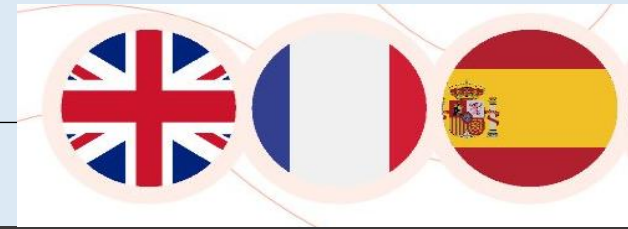
CP 15

Aquatics



CP 16

Wildlife



WOAH eLearning Platform

Who can access it?

Veterinary professionals can self-enroll, or be registered by the WOAH Training Secretariat when the module is part of global training programmes for Delegates, Focal Points or Contact Points.





WOAH Catalogue

About the eModule

A growing collection of online training modules developed under the WOAH Competency-based Training Framework (CBTF), aligned with WOAH Terrestrial and Aquatic Codes, Manuals, and Guidelines





Competency Package	Emodule	Level
CP02 - Quality and management of Veterinary Services/AAHS	Leadership Essentials for Veterinary Services	Day 2
	Leadership in Veterinary Services: intermediate level module	Day 2
	Leadership in Veterinary Services: advanced level module	Expert
	Leadership of Chief Veterinary Officers and WOAHS Delegates for stronger VS	Expert
CP05 - Animal health management	Outbreak investigation and response management –Field Veterinarians	Expert
	Outbreak investigation and response management - Veterinarians paraprofessional	Expert
	Outbreak investigation and response management – Veterinarians in Central Government	Expert
	African Swine Fever	Expert
CP06 - Emergency management	Introduction to emergency and disaster management	Day 2
	Planning for emergencies and disasters	Expert
	Emergency and disaster response	Day 2
CP07 - Animal welfare	Reptile animal welfare	Expert

**Available Online**


Competency Package	Emodule	Level
CP08 - Prudent use of antimicrobials and other veterinary products	AMR General Introduction	Day 1
	Stewardships on AMR under One Health approach	Day 1
	Stewardships on AMR in terrestrial animals	Day 2
	Stewardships on AMR in aquatic animals	Day 2
	Building a national AMR Action Plan (NAP)	Expert
CP10 - Partnership	Public-Private Partnerships in the Veterinary Domain: An Introductory Course	Day 1
	Animal health surveillance and partnership	Day 2
CP12 - Trade of animals and animal products	International trade regulatory framework: an overview	Day 1
	Principles of animal health status and regionalisation	Day 1
	Definition and demonstration of disease freedom (country, zone, compartment)	Day 2
	Selection and implementation of sanitary measures to be applied at export and import	Expert
	Import risk analysis: general principles	Day 1
	Hazard identification at import	Day 2
	Risk assessment for a safer trade	Day 2
	Risk management at import	Day 2
	Import health measures: the development steps	Expert
	The role of VS in import and export of animals and animal products: basic principles	Day 1
	The role of VS in import and export of animals and animal products: advanced principles	Day 2
CP16 - Wildlife	Wildlife Surveillance	Day 2
	Wildlife Surveillance	Expert



A growing, dynamic

The catalogue is regularly updated with new eModules,
announced on the platform homepage.





Coming SOON!

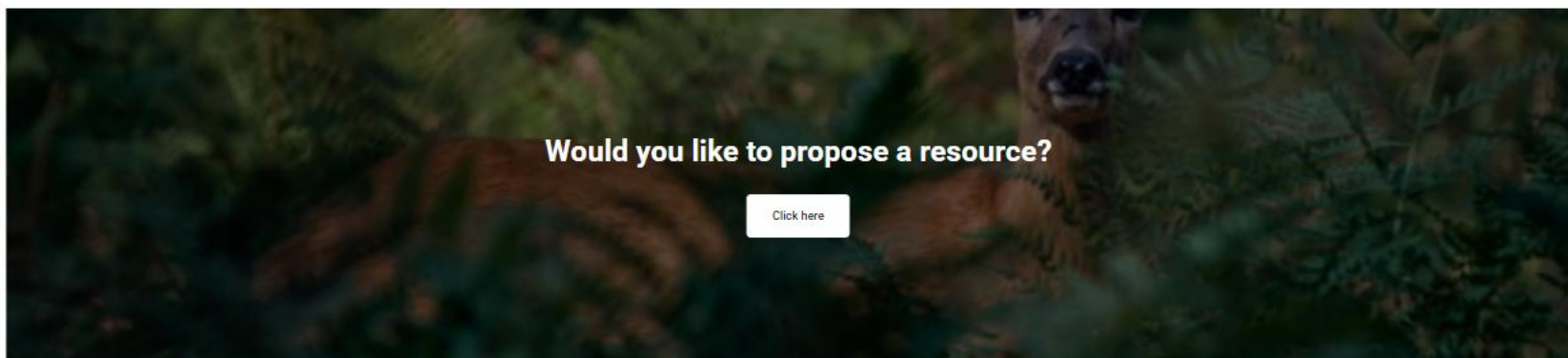
Competency Package	Emodule	
CP06 - Emergency management	Planning for emergencies and disasters	Day 2
CP07- Animal Welfare	Welfare of animals during slaughter	Day 2
	Animal welfare and pig production systems (TACH Chapter 7.13)	Day 1
	Killing of animals for disease control purposes (TACH Chapter 7.6)	Day 1
	Implementing Dog population Management (ICAM)	Day 1
	Dog population Management for Policy Makers (ICAM)	Expert
CP 15- Aquatics	Aquatic Animal Health Surveillance	Day 1
	Introduction to Geographic Information System (GIS) Applied to Aquatic Animal Health	Day 1
	Aquatics Surveillance	Day 1
	Aquatics Disease prevention/Control	Day1
CP16 - Wildlife	Wildlife Trade	Day 2
	Wildlife Trade	Expert



INVENTORY

[Course](#) [Settings](#) [Participants](#) [Grades](#) [Reports](#) [More ▾](#)

Inventory



 Not available (hidden) unless any of:

- You are a(n) *Manager*
- You are a(n) *Teacher*
- You are a(n) *Non-editing teacher*
- ...

[Show more](#)

CP1 - WOAH and its part...



CP2 - Quality and manag...



CP3 - Risk analysis



CP4 - Laboratory services



CP5 - Animal health man...



CP6 - Emergency manag...



CP7 - Animal welfare



CP 8 - Antimicrobial Res...



CP9 - Emerging risks



CP10 - Partnership



CP11 - One Health



CP12 - Trade of animals ...



CP13 - Food safety



CP14 - Economics of ani...



CP15 - Aquatics



CP16 - Wildlife



CP17 - Internal OIE traini...





certification

- At the beginning of the module, there is an entry test to check the starting level
- At the end of the module, the learner must pass a final test that is structured to assess the competencies defined and acquired.
- By passing 70% the learner get a badge together with a certificate.

Use the modules as:

- Stand alone
- Blended training
- Integrated into national training plans





WOAH eLearning Platform

for the reinforcement of Veterinary Services worldwide



Search courses

eModules Catalogue

Modules supporting VBD
prevention and control
competencies



CP1 - WOA and its partners
introduction



CP2 - Quality and
management of Veterinary
Services/Aq AHS

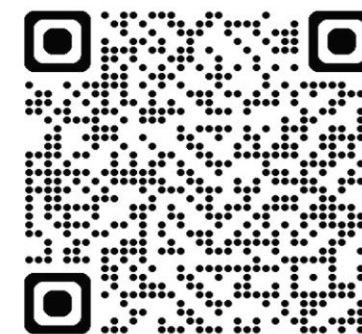


CP5 - Animal health
management



CP6 - Emergency
management

eModule Title	Educational level
Leadership in Veterinary Services: advanced level	Expert
Introduction to emergency and disaster management	Day 2
Planning for emergencies and disasters	Day 2
Planning for emergencies and disasters	Expert
Emergency and disaster response	Day 2



Thank you

Barbara Alessandrini
Capacity building Department
b.alessandrini@woah.org
pvs@woah.org
training@woah.org

12, rue de Prony, 75017 Paris, France
T. +33 (0)1 44 15 19 49
F. +33 (0)1 42 67 09 87

woah@woah.org
www.woah.org

[Facebook](#)
[Twitter](#)
[Instagram](#)
[LinkedIn](#)
[YouTube](#)
[Flickr](#)
