

Argentine experience with the western equine encephalitis epidemic



Session for National Experiences and Best Practice
Seminar “Vector-Borne Diseases in the European Region”



**Ministerio
de Economía**
República Argentina

Secretaría de Agricultura,
Ganadería y Pesca

 **senasa**

Contenido
Título Presentación

- ① **VBDs in Argentina and priority VBDs for national programmes.**
- ② **WEE outbreaks in Argentina**
- ③ **Measures taken in Argentina for surveillance, prevention, and control of the disease in humans and animals.**

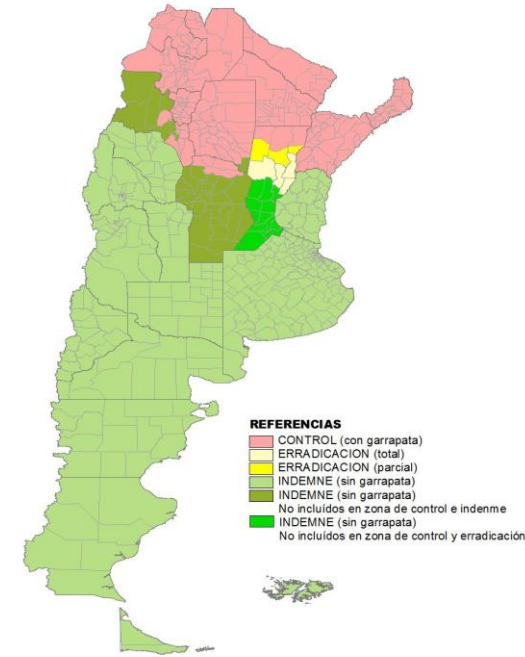


**VBDs in Argentina
and priority VBDs
for national
programmes.**

VBDs in Argentina and priority VBDs for national programmes.

National Bovine Tick (*Rhipicephalus microplus*) Control Program

- i) preserving tick-free zones;
- ii) safeguarding food safety;
- iii) adhering to the basic principles of integrated and strategic treatments and the rational use of tick control products; and
- iv) recognizing provincial plans.



Bluetongue disease

Disease limited to a specific area.





WEE outbreaks in Argentina

2

Equine
population

TOTAL EQUINOS
2.695.854

Buenos Aires 658.049

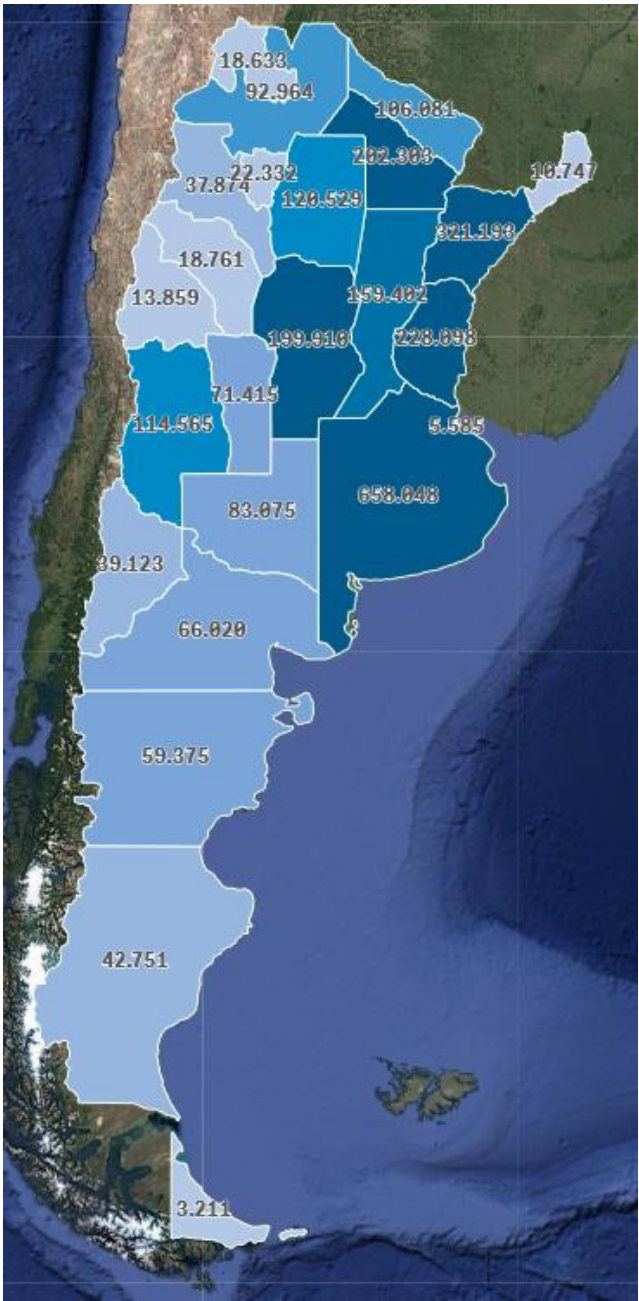
Corrientes 321.193

Entre Ríos 228.098

Chaco 202.303

Córdoba 199.910

Last official record of Western
Equine Encephalomyelitis (WEE)
in 1988



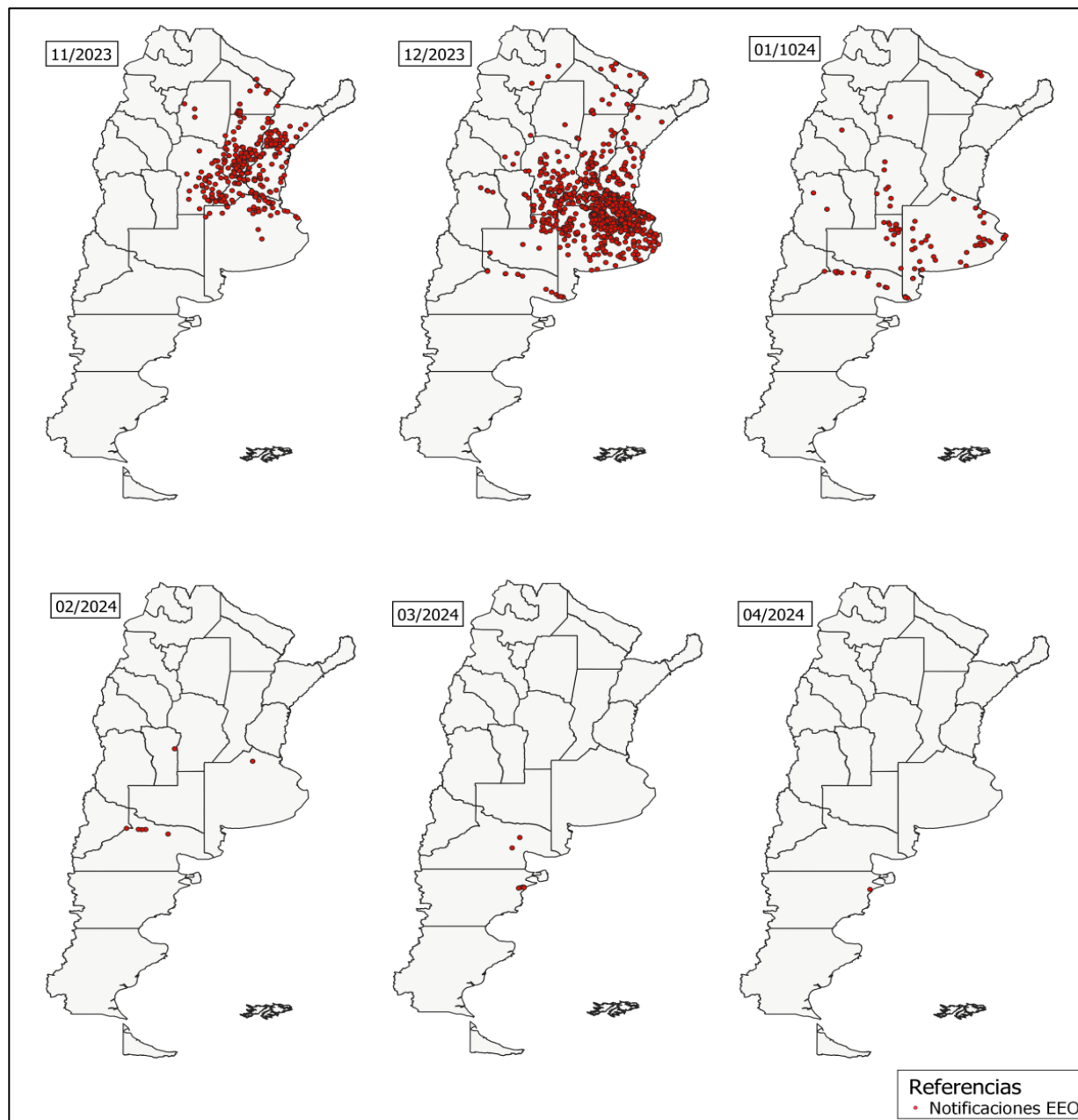
First cases

- 22/11/2023 - Notification of suspected cases in Santa Fe and Corrientes
- 25/11/2023 - Confirmation of positive diagnosis for the Alphavirus genus (Nested PCR) – INTA Castelar and Institute Vanella.
- 27/11/2023 - Confirmation of WEEv (Real-Time RT-PCR) – INTA Castelar



2

Evolution of cases and control measures



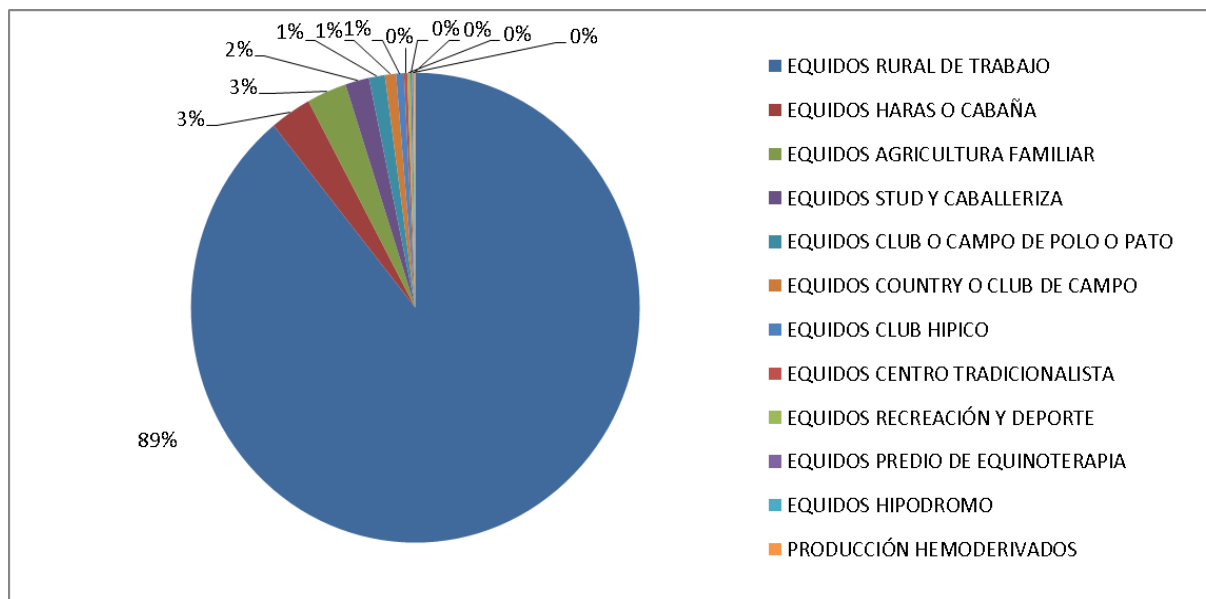
24/11/2023 -
Mandatory
vaccination

Inactivated,
bivalent (EEE and
WEE) or polyvalent
(EEE, WEE, and
other diseases)
vaccines.

Last case:
15/04/2024
Closure of the
event: 13/05/2024

Total cases: 1542⁸

Epidemiological summary

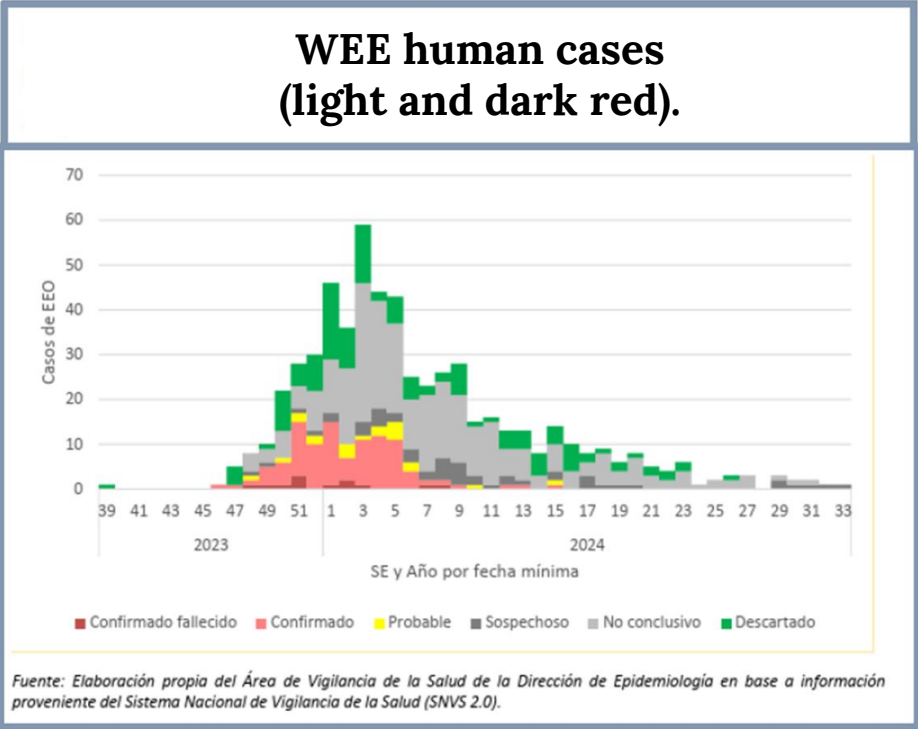


- 2139 affected equines.
- Morbidity: 8%
- Mortality: 2%
- Letality: 27% (50% in stallion)

Mare	46%
Gelding	33%
Foal	18%
Stallion	3%

2

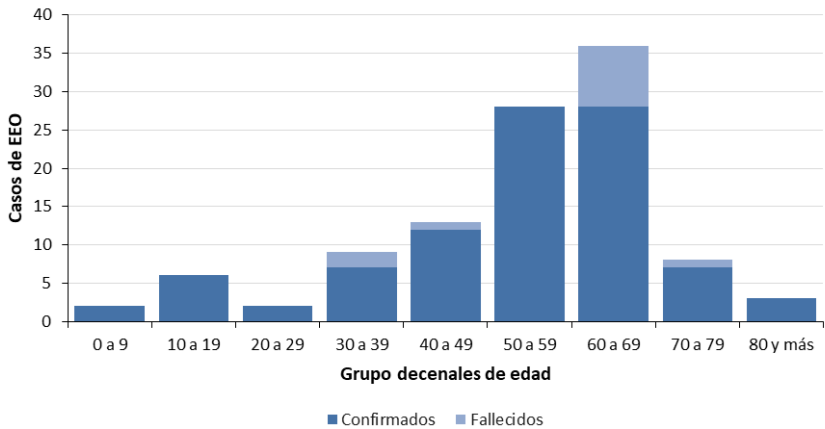
Human health information



EEO en humanos: Casos confirmados y probables. Argentina.

108 Casos confirmados
20 Casos probables
12 casos fallecidos
7 provincias

Buenos Aires	66-18
Santa Fe	20-1
Córdoba	10-1
Entre Ríos	6-0
Río Negro	4-0
Santiago del Estero	1-0
La Pampa	1-0



- 87% male
- Vector surveillance: Aedes (Ochlerotatus) albifasciatus and Culex genus. All tested negative for WEE by PCR.



**Measures taken in
Argentina for
surveillance,
prevention, and
control of the disease
in humans and
animals.**

- Mandatory vaccination in equines continue.
- Definition of suspected and confirmed cases in humans have been adapted.
- Diagnosis in human also adapted.





**Ministerio
de Economía**
República Argentina

Secretaría de Agricultura,
Ganadería y Pesca

 **senasa**