



Bundesministerium  
für Ernährung  
und Landwirtschaft

# Foot and Mouth Disease (FMD) in DEU

GF-TAD meeting 7 April 2025

[bmel.de](https://www.bmel.de)  

FMD in DEU  
Brandenburg (BB)  
– 1st case since 1988



# FMD in water buffalo in Märkisch Oderland district (MOL), Brandenburg

- herd of 14, three dead, detection of serotype O, exchange with EU-RL
- extensive keeping in nature reserve close to Berlin, only self produced feed (hey)
- implementing protection (3 km radius - red line) + surveillance zone (10 km radius - blue line) (= restriction zones)



# FMD measures in Brandenburg and Berlin

- stamping out and safe disposal in 1km zone and one contact establishment
- 72h stand still for cloven-hoofed animals – later on extended
- FLI for epidemiological investigation on the spot
- epidemiological investigations including contact establishments (route of practitioner and rendering lorry)

## FMD measures in Brandenburg and Berlin II

- sampling all establishments within restriction zones and contacts finalized – only negative results
- immediate, close and regular exchange with Federal Länder and stakeholder
- publicly available information and press releases – raising
- temporarily closing of Berlin Zoo and Tierpark
- no assembling of cloven-hoofed animals on International Green Week in Berlin
- sampling of wild cloven-hoofed animals to exclude spread of virus by these species

# FMD additional measures in Brandenburg and Berlin

→ reiterating checks and sampling in establishments with susceptible animals within restriction zones finalised

→ testregime:

❖ in protection zone three times every 7 days

❖ in surveillance zone twice every 14 days

❖ contact establishments twice

	No. of establishments	No. of cloven-hoofed animals	No. of examinations/tests
3 km protection zone	8	66 BB 28 BE	287 / 272 BB 75 / 75 BE
10 km surveillance zone	150	6075 BB 817 BE	2889 / 2393 BB 774 / 882 BE
Contact establishments	7 – one culled	2856 (culled 61)	972 / 15

# FMD additional measures in all of Germany

→ fortified passive surveillance in kept and wild susceptible animals since December 1<sup>st</sup>, 2024

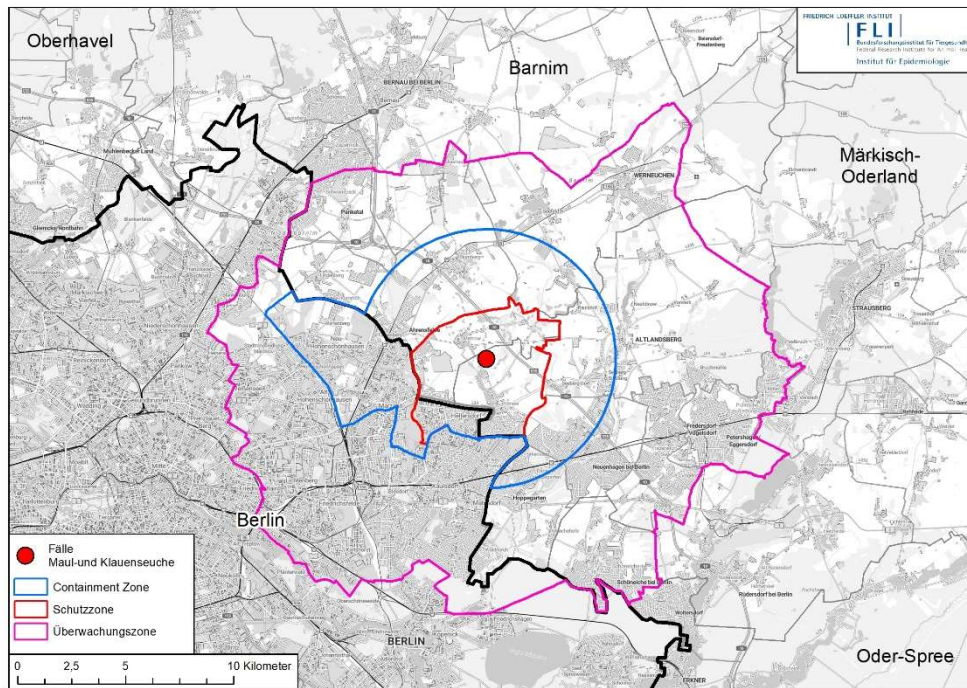
\* Animals of outbreak



BUNDESLAND	WILD LIVING ANIMALS INVESTIGATED	
	Positive result	Negative result
BADEN-WÜRTTEMBERG		70
BAVARIA		141
BERLIN AND BRANDENBURG		279
HAMBURG		2
HESSE		57
LOWER SAXONY		172
MECKLENBURG WESTERN POMERANIA		116
NORTH RHINE-WESTPHALIA		49
RHINELAND-PALATINATE		134
SAARLAND		39
SAXONY		60
SAXONY-ANHALT		205
SCHLESWIG-HOLSTEIN		136
THURINGIA		259
<b>TOTAL</b>	<b>0</b>	<b>1,719</b>

FEDERAL STATE	CLOVEN-HOOFED ANIMALS INVESTIGATED	
	Positive result	Negative result
BADEN-WÜRTTEMBERG		809
BAVARIA		398
BERLIN AND BRANDENBURG	12	4,617
HAMBURG		61
HESSE		445
LOWER SAXONY		1,003
MECKLENBURG WESTERN POMERANIA		127
NORTH RHINE-WESTPHALIA		491
RHINELAND-PALATINATE		42
SAARLAND		15
SAXONY		372
SAXONY-ANHALT		465
SCHLESWIG-HOLSTEIN		677
THURINGIA		378
<b>TOTAL</b>	<b>12*</b>	<b>9,900</b>

# FMD additional measures in Brandenburg and Berlin



- CID (EU) 2025/323 implementing an additional zone (117 km<sup>2</sup>) based on a 6 km radius until April 11<sup>th</sup>, 2025 after expiry of surveillance zone on February 24<sup>th</sup>, 2025
- disease control measures as described in EU-legislation for a “further restricted zone”



# FMD containment zone contents of dossier

as of WOAHP chapters 4.4.7, 1.11.3 and 8.8.

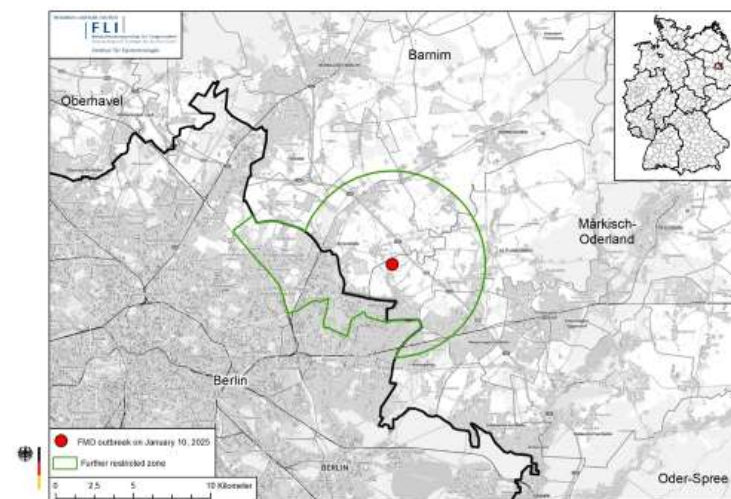
- administration and veterinary system
- legal basis – EU and national regulations, knowledge of livestock, registration of establishments, ID of animals, certification of movements
- eradication plan, strategy, measures and results thereof
- surveillance strategy, measures and results thereof
- early detection system and awareness raising actions
- data of establishments within all RZ (protection/surveillance/additional)
- Measures in CZ and control of compliance

## FMD containment zone - timeframe of approval

- exchange and development of strategy with Länder/FLI/KOM/WOAH supported by veterinary expert starting February 2025
- dossier to WOAH on February 16<sup>th</sup>, 2025
- additional questions of WOAH received on February 20<sup>th</sup>, 2025
- answers provided by DEU on February 28<sup>th</sup>, 2025
- approval of containment zone on March 12<sup>th</sup>, 2025

## containment zone approved by WOAAH on March 12<sup>th</sup>, 2025

- CID (EU) 2025/323 implementing an additional zone (117 km<sup>2</sup>)  
based on a 6 km radius until April 11<sup>th</sup>, 2025
- disease control measures as described in EU-legislation for a  
“further restricted zone”
- establishments within restricted zones double /  
triple checked and sampled



## measures for the FMD containment zone

- ongoing movement restrictions for susceptible animals and their products (germinal products, meat, by products of slaughtering, milk, colostrum, dairy products, ABPs, feed, ...)
- prohibition of ambulatory artificial insemination or natural mating
- prohibition of any markets or other assemblies

CONTAINMENT ZONE													
Establishments & susceptible animals													
Total number of establishments	Total number kept susceptible animals	Cattle	Calf	Mother cow	Breeding bull	Sheep	Ewe	Goat	Pig	Creel game	Red deer	Fallow deer	other cloven-hoofed
36	1 700	103	1	1	1	959	447	52	35	18	48	31	4

## FMD conclusions

- outbreak eradicated
- no spread of the virus to other establishments, other regions or MS
- role of wildlife regarded in surveillance (within and outside of restriction zones)
- WOAHA approval of containment zone on March 12<sup>th</sup>, 2025
- WOAHA reinstatement of free status without vaccination for the rest of Germany

## FMD conclusions II

- source of infection – assumption of human wrongdoing
- time of infection between December 15<sup>th</sup> and 31<sup>st</sup> 2024
- MS recognise regionalisation (important signal to stakeholders)
- third countries open for exchange
- WOAHP fast regaining of free status without vaccination for Germany  
incl. containment zone in progress

Thanks to the colleagues of:

- Friedrich-Loeffler-Institute
- Vet Authorities in the Federal Länder, esp. Brandenburg and Berlin

Federal Ministry of Food and Agriculture  
Directorate 3 – deputy CVO  
Unit 323 – Animal Diseases -  
EU-Trade, International Affairs, Crisis Centre  
Rochusstr. 1  
53123 Bonn



Dr. Barbara Hoffmann  
323@bmel.bund.de  
www.bmel.de  
Tel. +49 228-99 529 3560

[www.bmel.de](http://www.bmel.de)  
[@bmel](https://twitter.com/bmel)  
[@Lebensministerium](https://www.instagram.com/Lebensministerium)