

WOAH Global Animal Welfare Strategy (GAWS)

5th meeting of WOAH regional network of National Contact Points on long-distance transportation in Europe

11 – 13 March 2025, Thessaloniki, Greece



World Organisation
for Animal Health



Co-funded by
the European Union



THE WOAAH AND ANIMAL WELFARE: A STRATEGIC ENGAGEMENT

Resolution No. XIV from the 70th WOAAH General Session, 26 - 31 May 2002

- Animal welfare has been identified as a strategic priority for the WOAAH since 2001, under the mandate granted by all Members.

Resolution No. XXXI from 85th General Session, 21–26 May 2017

- The WOAAH Global Animal Welfare Strategy was developed from lessons learned from actions taken at national and regional level and aims to be a source of ongoing guidance for the WOAAH's activities in this area, and it's based in four main pillars.



VISION

A world where the welfare of animals is respected, promoted and advanced, in ways that complement the pursuit of animal health, human well-being, socio-economic development and environmental sustainability.



STRATEGIC PILLARS



**DEVELOPMENT OF
ANIMAL WELFARE
STANDARDS**



**CAPACITY BUILDING
AND EDUCATION**



**IMPLEMENTATION OF
ANIMAL WELFARE
STANDARDS AND
POLICIES**



**COMMUNICATION
WITH
GOVERNMENTS,
ORGANISATIONS AND
THE PUBLIC**



THE WOAH STANDARDS

CODES



MANUALS



WOAH standards for the improvement of animal health and welfare, and veterinary public health worldwide, including the prevention of disease spread through international trade of animals and animal products



DEVELOPMENT OF ANIMAL WELFARE STANDARDS

- Historic role of the WOAAH in protecting animal health - Animal health is a key component of animal welfare ;
- The mandate of the members of the WOAAH to take the lead internationally on animal welfare.
- Standards applicable to all WOAAH Members with diverse economic, agro-ecological, cultural and social contexts,
- Guiding principles and recommendations rather than a regulation,
- The important support to peoples' livelihoods and agriculture output

WOAH standard-setting process https://youtu.be/_ZeCArD-z0k

WOAH STANDARDS ON ANIMAL WELFARE: TERRESTRIAL CODE



SECTION 7.

Chapter 7.1.

Chapter 7.2.

Chapter 7.3.

Chapter 7.4.

Chapter 7.5.

Chapter 7.6.

Chapter 7.7.

Chapter 7.8.

Chapter 7.9.

Chapter 7.10.

Chapter 7.11.

Chapter 7.12.

Chapter 7.13.

Chapter 7.14.

ANIMAL WELFARE

Introduction to the recommendations for animal welfare (2004/2019)

Transport of animals by sea (1998/2005)

Transport of animals by land (1998/2005)

Transport of animals by air (1982/2011)

Animal welfare during slaughter (2005/2024)

Killing of animals for disease control purposes (2005/2016)

Stray dog population control (2009/2022)

Use of animals in research and education (2010/2013)

Animal welfare and beef cattle production systems (2012/2013)

Animal welfare and broiler chicken production systems (2013/2017)

Animal welfare and dairy cattle production systems (2015/2017)

Welfare of working equids (2016/2018)

Animal welfare and pig production systems (2018/2019)

Killing of reptiles for their skins, meat and other products (2019)



WOAH STANDARDS ON ANIMAL WELFARE: AQUATIC CODE



SECTION 7. WELFARE OF FARMED FISH

Chapter 7.1. Introduction to recommendations for the welfare of farmed fish (2008)

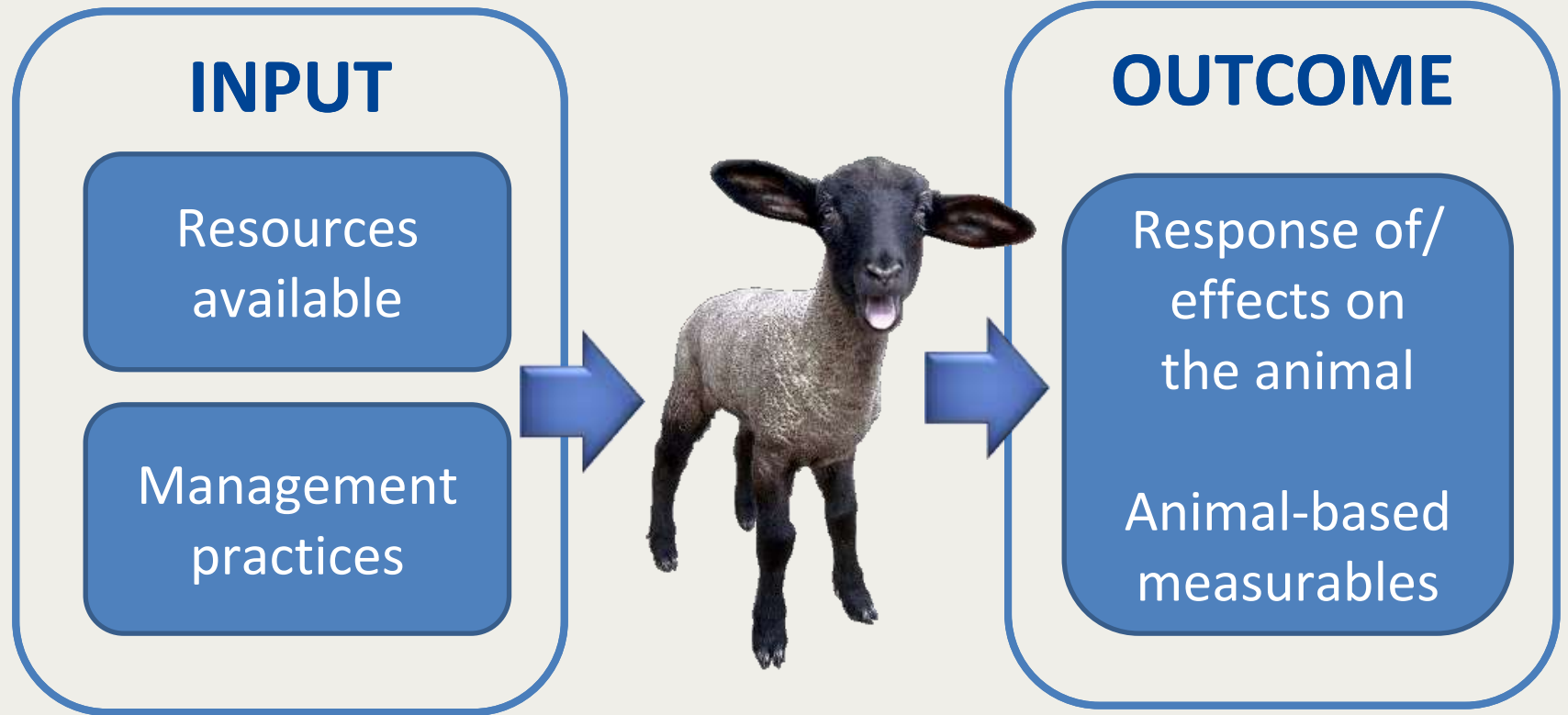
Chapter 7.2. Welfare of farmed fish during transport (2008/2012)

Chapter 7.3. Welfare aspects of stunning and killing of farmed fish for human consumption (2010/2012)

Chapter 7.4. Killing of farmed fish for disease control purposes (2012/2013)



CONCEPTS USED ON THE WOAAH ANIMAL WELFARE STANDARDS



GAWS PILLARS ACTIVITIES



ANIMAL WELFARE STANDARDS UNDER REVIEW (TERRESTRIAL CODE)

Chapter adopted

- ❑ Chapter 7.5. Slaughter of animals (new title: Animal Welfare during slaughter) and related definitions; Adopted during the 91st General Assembly of Delegates, May 2024.

Chapter for comments

- ❑ Chapter 7.1. Introduction to the recommendations for animal welfare; Presented for comments (Inclusion of the 'Five domains' concept and use of terms 'animal-based measures' and 'measurables'). **Annex 29 of the February 2024 Code Commission Report.**
- ❑ Chapter 7.6. Killing of animals for disease control purposes, **Annex 24 of the February 2024 Code Commission Report.**



DEVELOPMENT OF ANIMAL WELFARE STANDARDS

ANIMAL WELFARE STANDARDS UNDER REVIEW (TERRESTRIAL CODE)

Other work in progress

- ❑ **Chapters 7.2. and 7.3. Transport of animals by sea and land;**
- ❑ **Chapter 7.4. Transport of animals by air. Preliminary discussions with IATA.**

<https://www.woah.org/en/what-we-do/animal-health-and-welfare/animal-welfare/development-of-animal-welfare-standards/>

GAWS PILLARS ACTIVITIES



CAPACITY
BUILDING AND
EDUCATION

- WOAHA Training Portal (<https://training.oie.int/>)
- Development of e-learning modules.
 - Chapter 7.14 Killing of Reptiles for their Skins, Meat and Other Products.
 - Chapter 7.5 Welfare of animals during slaughter
- WOAHA AW FPs Seminar and 'Flash Information Sessions'.
- Animal Welfare Collaborating Centers Network



COMMUNICATION
WITH
GOVERNMENTS,
ORGANISATIONS
AND THE PUBLIC



To bring together the animal welfare research community, the global animal welfare movement and the global animal-source food sector to debate openly on topics relevant to animal welfare

1. Supporting the implementation of WOAHS standards (Paris, 2018)
2. Animal transport: a shared responsibility (Paris, 2019)
3. Animal Welfare and the United Nations' Sustainable Development Goals (2021)
4. Animal welfare economics (2022)
5. Developing national animal welfare legislation; different paths for the same destination (2023, Paris)
6. How WOAHS Global Animal Welfare Collaborating Centre Network can support Members in the development of animal welfare policies (Merida, 2024)



IMPLEMENTATION
OF ANIMAL
WELFARE
STANDARDS AND
POLICIES

Technical Specification ISO TS 34700, Animal welfare management

General requirements and guidance for organizations in the food supply chain

<https://www.iso.org/standard/64749.html>

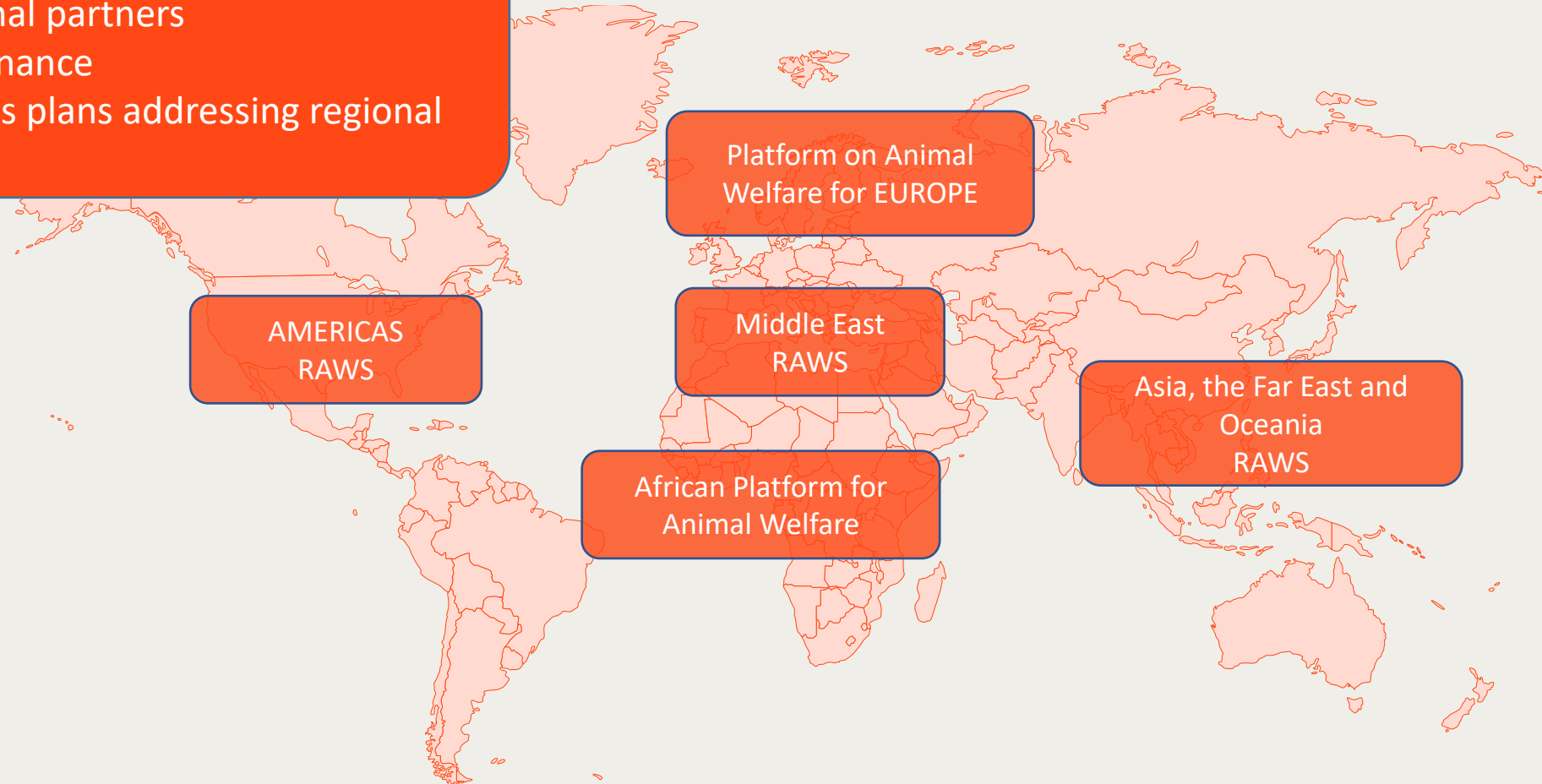
- to provide a management tool for the implementation of the animal welfare principles
- to provide guidance for the implementation of public or private animal welfare standards and relevant legislation
- to facilitate the integration of animal welfare principles in business-to-business relations.



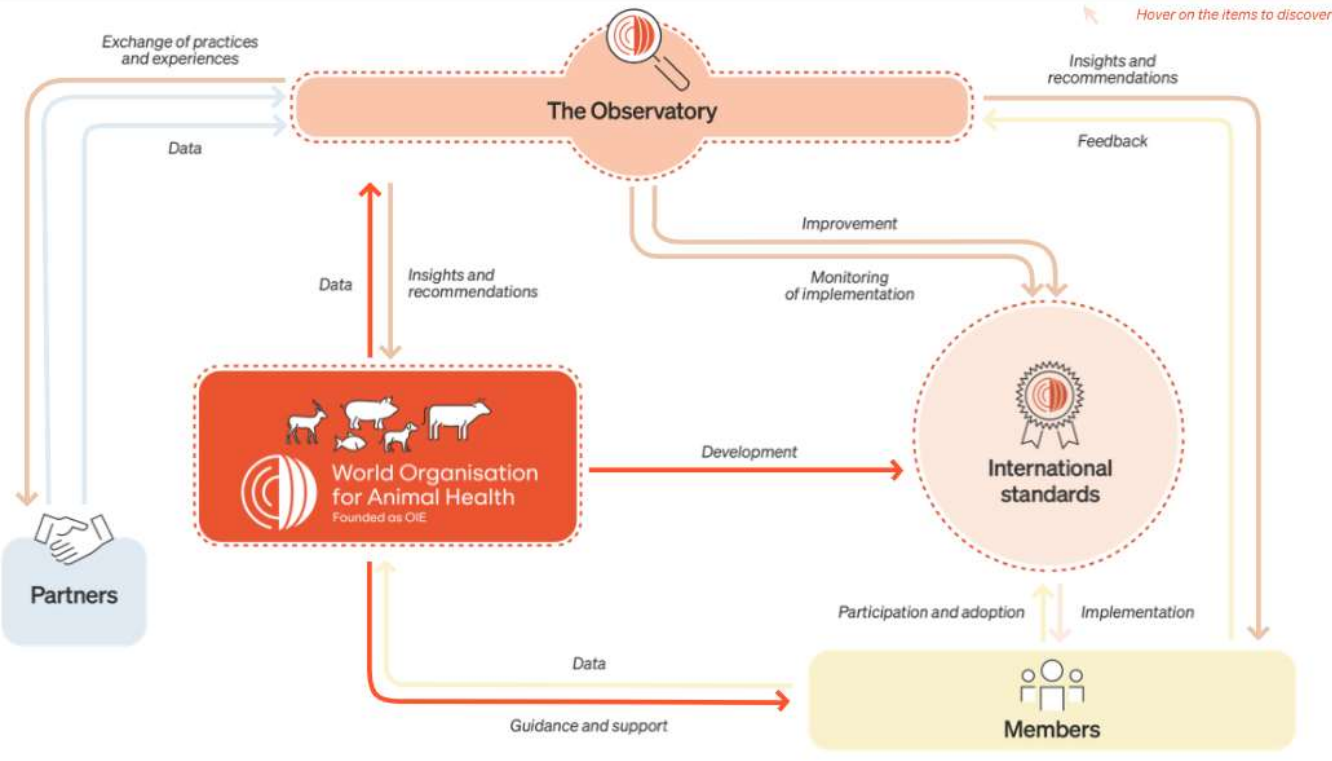
IMPLEMENTATION
OF ANIMAL
WELFARE
STANDARDS AND
POLICIES

Regional Animal Welfare Strategies (RAWS) and Platforms

- Regional priorities
- Regional partners
- Governance
- Actions plans addressing regional needs



THE OBSERVATORY: MONITORING THE IMPLEMENTATION OF WOAAH STANDARDS



The Observatory is a continuous and systematic mechanism designed to analyse the implementation of WOAH international standards by using information regularly collected by various activities, as well as external sources.

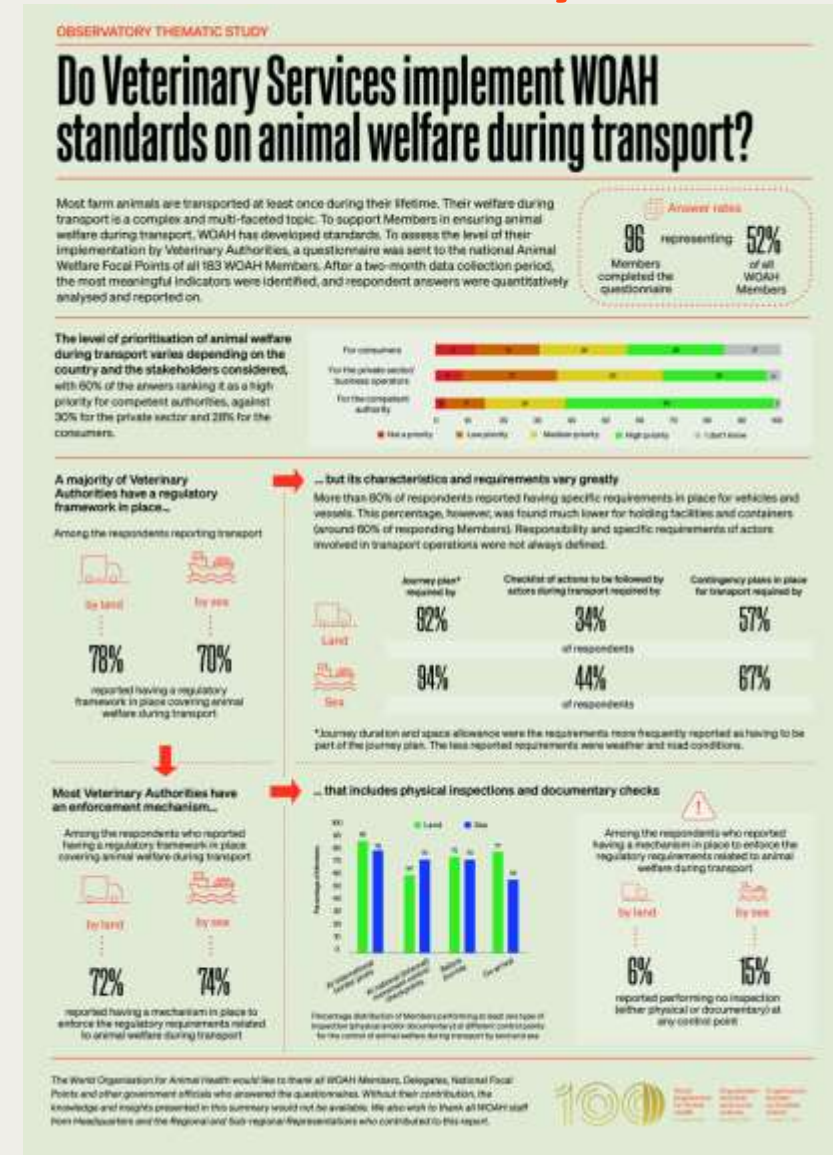
Annual Report



The Observatory developing a **thematic study** on the implementation of standards related to transport of live animals at global level

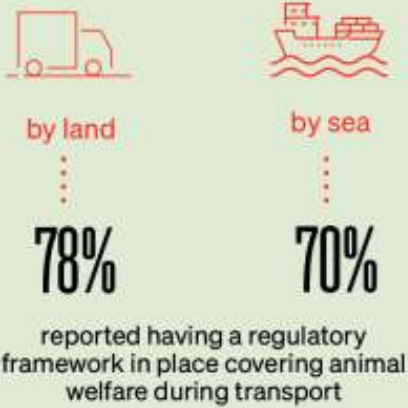
Animal welfare during transport by land and sea: level of implementation of WOAAH standards by Members' Veterinary Services

- Assess to what extent the standards related to the transport of live animals are implemented in WOAAH Members;
- Seek feedback on Members' overall experience with these standards (what factors facilitate their implementation versus what barriers prevent their implementation);
- Inform standard revision process of the Code commission.



A majority of Veterinary Authorities have a regulatory framework in place...

Among the respondents reporting transport



... but its characteristics and requirements vary greatly

More than 80% of respondents reported having specific requirements in place for vehicles and vessels. This percentage, however, was found much lower for holding facilities and containers (around 60% of responding Members). Responsibility and specific requirements of actors involved in transport operations were not always defined.

	Journey plan* required by	Checklist of actions to be followed by actors during transport required by	Contingency plans in place for transport required by
Land	92%	34%	57%
Sea	94%	44%	67%

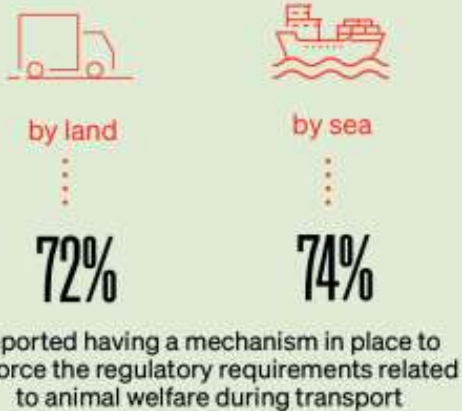
of respondents

*Journey duration and space allowance were the requirements more frequently reported as having to be part of the journey plan. The less reported requirements were weather and road conditions.

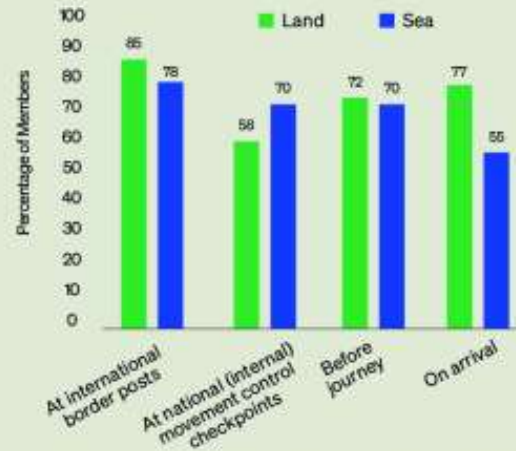


Most Veterinary Authorities have an enforcement mechanism...

Among the respondents who reported having a regulatory framework in place covering animal welfare during transport



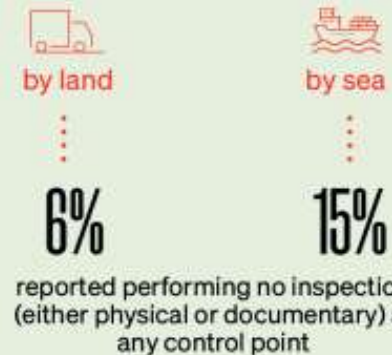
... that includes physical inspections and documentary checks



Percentage distribution of Members performing at least one type of inspection (physical and/or documentary) at different control points for the control of animal welfare during transport by land and sea



Among the respondents who reported having a mechanism in place to enforce the regulatory requirements related to animal welfare during transport





Animal welfare is a complex and sensitive issue. It puts into question our relationship with animals and our ethical responsibility towards animals used or affected by human communities for various purposes.



Thank you!

5th meeting of WOAHP regional network of National Contact Points on long-distance transportation in Europe

11 – 13 March 2025, Thessaloniki, Greece



World Organisation
for Animal Health

