

# WOAH Platform on Animal Welfare for Europe

Implementation of WOAH standards

Members' self-assessment tool on transport

---

5<sup>th</sup> meeting of WOAH regional network of National Contact Points

on long-distance transportation in Europe

11 – 13 March 2025, Thessaloniki, Greece

---



World Organisation  
for Animal Health



Co-funded by  
the European Union



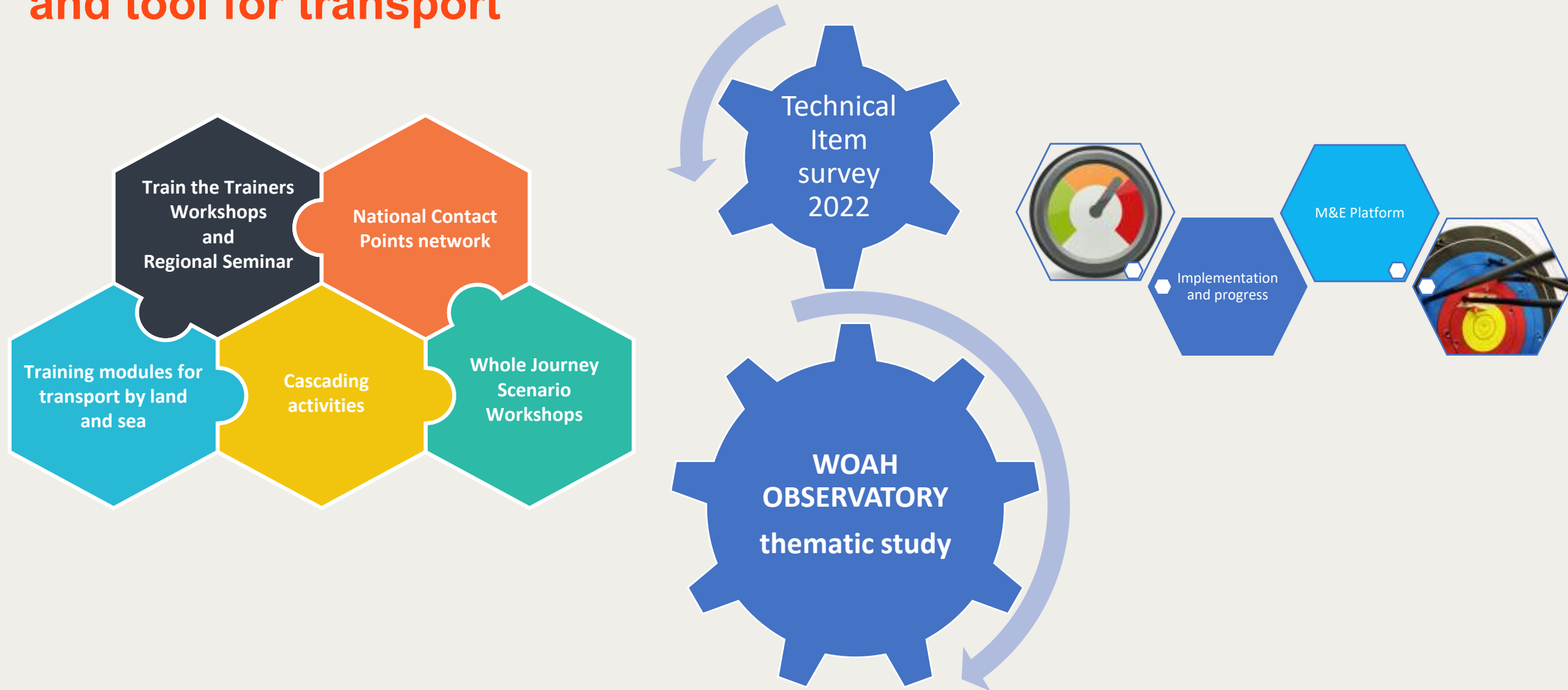


## Transport of animals





# Development of a self-assessment and monitoring methodology and tool for transport







## Objectives

- understand the current situation in member countries regarding the implementation of WOAH standards on the transport of animals (Chapter 7.2 and Chapter 7.3).
- help to identify gaps and areas for improvement and
- measure progress over time
  
- Platform M&E system



## self-assessment and monitoring tool for transport

Data  
collection

Processing  
and analysis

Presentation  
of results



# Questionnaire structure

## Responder details

### Transport by sea

- Overview
  - Legislative framework
  - Competed Authority (structure, competence)
- Chapters sections
  - requirements and procedures for approval for facilities, containers, for the holding and transporting of animals.
  - responsibilities competence standards, and capacity building
  - planning the journey and its verification
  - contingency plans
  - existing working/operating procedures, best practices guidelines
  - evaluation and monitoring of the implementation of standards and requirements

### Transport by land

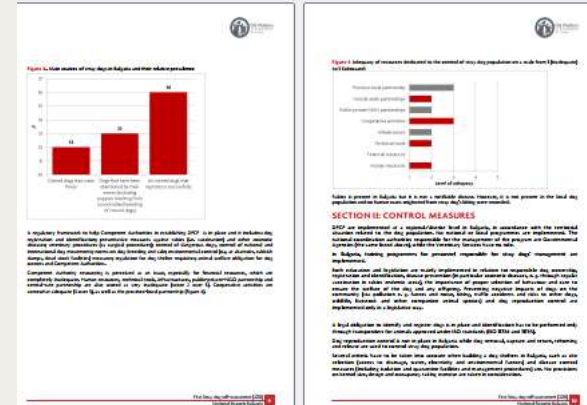
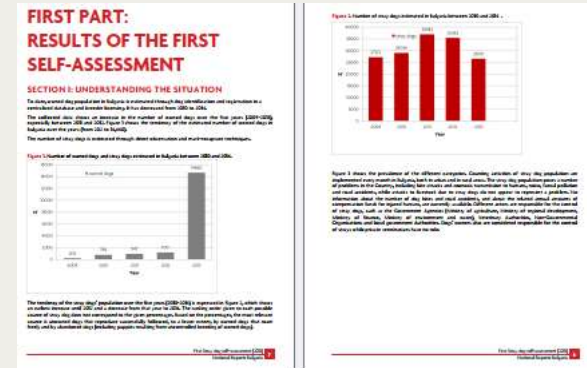
- Overview
  - Legislative framework
  - Competed Authority (structure, competence)
- Chapters sections
  - requirements and procedures for approval for facilities, containers, vehicles for the holding and transporting of animals.
  - responsibilities competence standards, and capacity building
  - planning the journey and its verification
  - contingency plans
  - existing working/operating procedures, best practices guidelines
  - evaluation and monitoring of the implementation of standards and requirements

## Submission validation



# Results visualization

- dashboard
- country reports
- regional/subregional report







- ❖ **Control of dog movements** at national and international level implemented
- ❖ **Reproductive control for un-owned free roaming dogs** in place
- ❖ **The budget for DPM programme does not include funds** to conduct M&E activities



**WOAH-IT**  
**Self-Assessment and Monitoring-System**  
**for Dog Population Management**  
**questionnaire for the Competent Authorities**  
**(central level)**

1. General information  
2. Dog population  
3. Dog population management  
4. Dog population management  
5. Dog population management  
6. Dog population management  
7. Dog population management  
8. Dog population management  
9. Dog population management  
10. Dog population management  
11. Dog population management  
12. Dog population management  
13. Dog population management  
14. Dog population management  
15. Dog population management  
16. Dog population management  
17. Dog population management  
18. Dog population management  
19. Dog population management  
20. Dog population management  
21. Dog population management  
22. Dog population management  
23. Dog population management  
24. Dog population management  
25. Dog population management  
26. Dog population management  
27. Dog population management  
28. Dog population management  
29. Dog population management  
30. Dog population management  
31. Dog population management  
32. Dog population management  
33. Dog population management  
34. Dog population management  
35. Dog population management  
36. Dog population management  
37. Dog population management  
38. Dog population management  
39. Dog population management  
40. Dog population management  
41. Dog population management  
42. Dog population management  
43. Dog population management  
44. Dog population management  
45. Dog population management  
46. Dog population management  
47. Dog population management  
48. Dog population management  
49. Dog population management  
50. Dog population management  
51. Dog population management  
52. Dog population management  
53. Dog population management  
54. Dog population management  
55. Dog population management  
56. Dog population management  
57. Dog population management  
58. Dog population management  
59. Dog population management  
60. Dog population management  
61. Dog population management  
62. Dog population management  
63. Dog population management  
64. Dog population management  
65. Dog population management  
66. Dog population management  
67. Dog population management  
68. Dog population management  
69. Dog population management  
70. Dog population management  
71. Dog population management  
72. Dog population management  
73. Dog population management  
74. Dog population management  
75. Dog population management  
76. Dog population management  
77. Dog population management  
78. Dog population management  
79. Dog population management  
80. Dog population management  
81. Dog population management  
82. Dog population management  
83. Dog population management  
84. Dog population management  
85. Dog population management  
86. Dog population management  
87. Dog population management  
88. Dog population management  
89. Dog population management  
90. Dog population management  
91. Dog population management  
92. Dog population management  
93. Dog population management  
94. Dog population management  
95. Dog population management  
96. Dog population management  
97. Dog population management  
98. Dog population management  
99. Dog population management  
100. Dog population management



## Developing self-assessment and monitoring tool on animal transport

### External consultation (method)

- conduct a thorough review of the methodology
- determine the most appropriate elements for developing standards in transport.
- address whether the proposed questionnaire effectively aligns with the intended objectives
- Designing a data analyst framework focusing on processes for data analysis, report generation and results visualisation

### External consultation (IT platform)

- define and describe a process and structure, data analysis
- develop IT platform, database, user interface and dashboard

# 4th Action Plan for 2024 - 2026

## TRANSPORT OF ANIMALS

2024

2025

2026



Regional WJS workshop Europe



Multi-regional WJS workshop Europe/NorthAfrica/Middle East



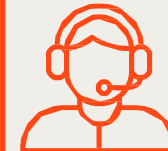
Regional WJS workshop Europe



Meeting of the NCPT network



Meeting of the NCPT network



Meeting of the NCPT network

Development of a self-assessment and monitoring tool on transport



# Development of a self-assessment and monitoring methodology and tool for transport

