

## Hungary

Katalin Pattantyús-Ábrahám, Eszter Zemankovics



---

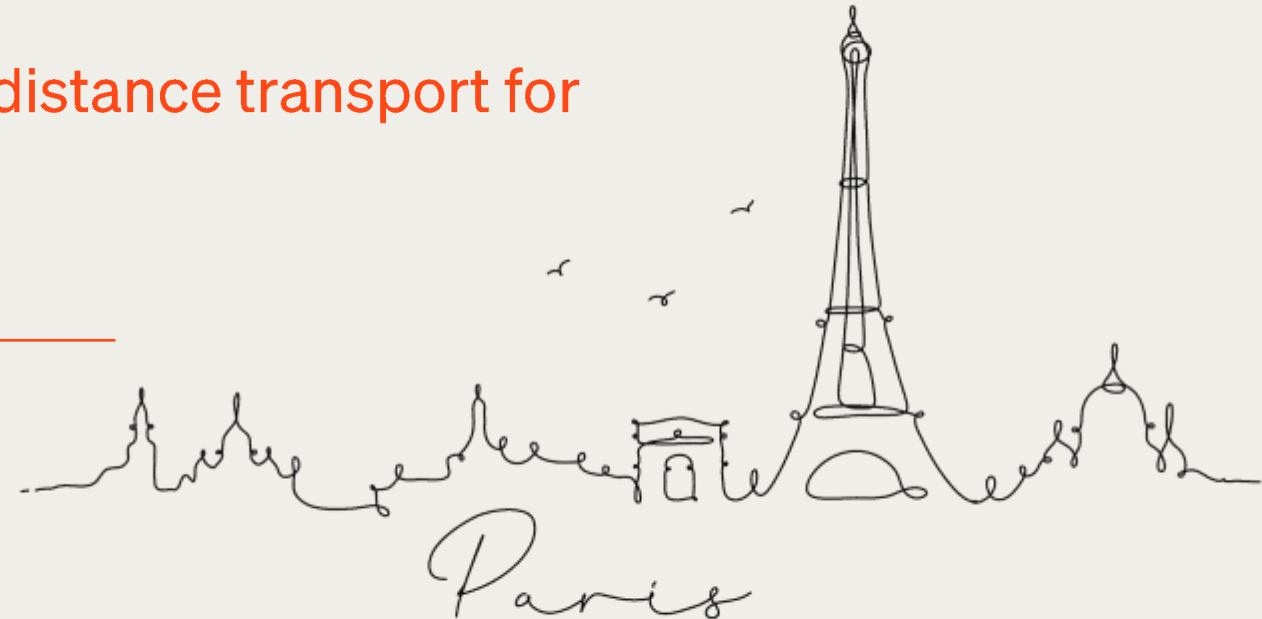
## Whole Journey Scenario workshop on long-distance transport for Europe

16 – 18 December 2024, Paris, France

---



World Organisation  
for Animal Health  
Founded in 1924

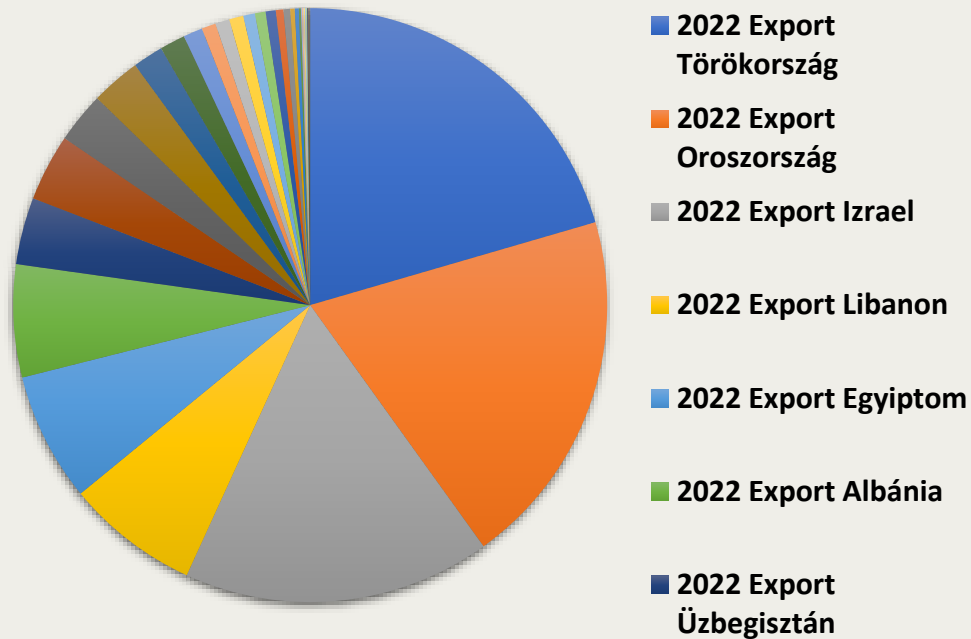




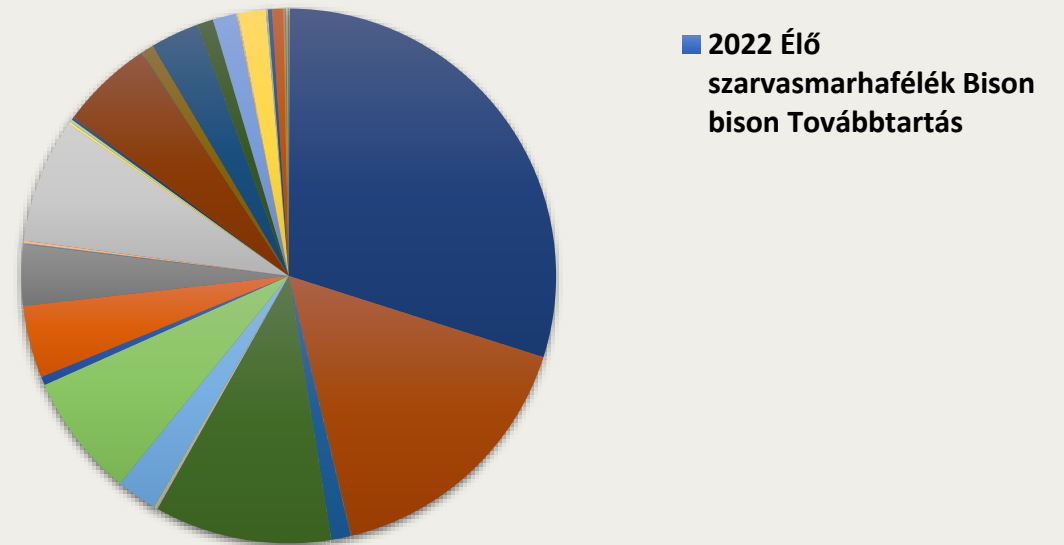
## Overview of country livestock transport and trade



### Összeg / I.2 Szám Tanúsítványok

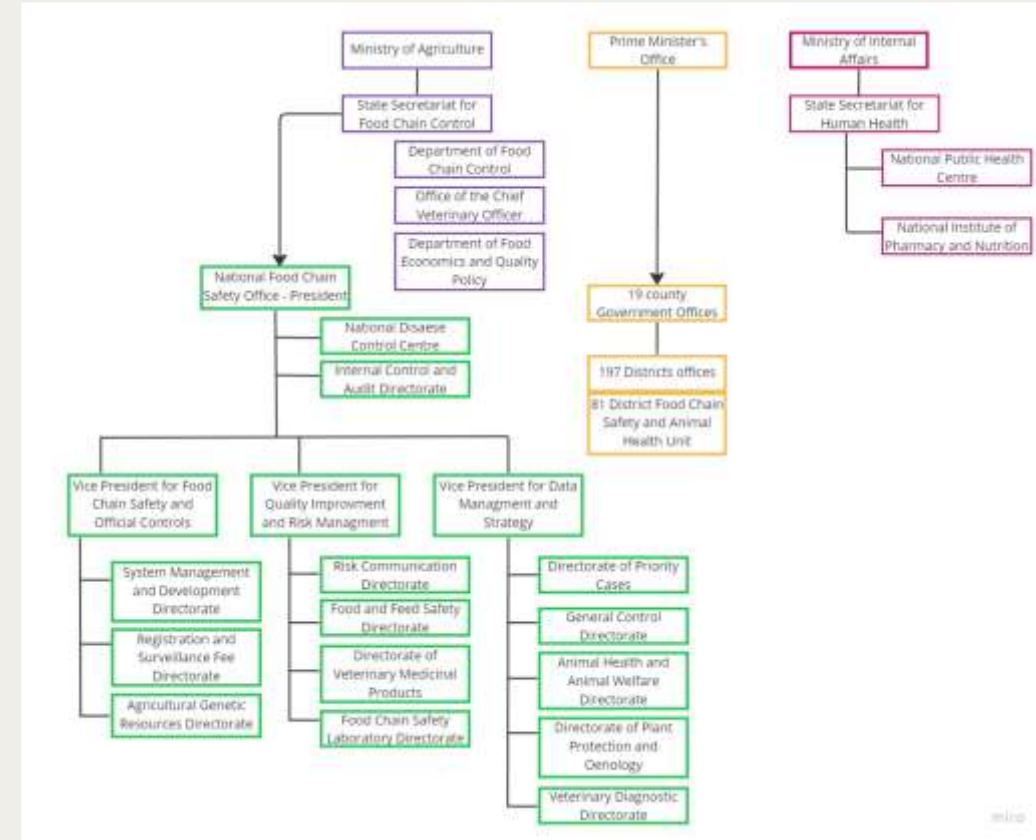


### Szállítmányok száma



## Legal requirements

- 1/2005/EC on the protection of animals during transport and related operations
- XXVIII of 1998 degree About the protection and welfare of animals
- 88/2008. (VII.18.) MARD order. On the implementation of Regulation 1/2005/EC on the protection of animals during transport and related operations
- 87/2012. (VIII.27.) MAD order. On the animal health rules for the domestic transport of live animals



Holistic approach – centralized policy

Single authority is responsible for the control of the whole food chain (Animal health and welfare  
Food and feed safety (incl. GMO and catering) Plant health and plant protection Soil conservation

**Ministry of Agriculture (MA)- Department of Food Chain Control CVO**

- The Minister of Agriculture is directing
  - strategic planning
  - legislation
  - international affairs.
  - NFCSO

**National Food Chain Safety Office (NFCSO) 22/2012 Government Decree**

- NFCSO as central competent authority is responsible for supporting of decision-making of the Ministry of Agriculture and providing control plans, procedures and guidelines to
- Organisation of official controls and other official activities county government offices. In case of events when immediate action is required the CVO
- has the right to give direct order to county government offices.

## County-District Offices

- Authorising transporter/vehicle
  - The following documents must be presented:
    - FELIR identifier
    - Vehicle permits
    - Qualification certificates
    - Traceability documentation
    - Contingency plan
- Validating journey logs
- On-spot checks-before loading
- Retrospective checks



## Animal welfare third countries-actions

### Restrictions on Long-Distance Animal Transport During the Summer Period: Central Prohibition Measure

- Transport of ruminants to Turkey via **Bulgaria** may be **temporarily prohibited** if extreme heat is forecasted. Alerts from **Bulgarian authorities** and Weather forecasts from the **Bulgarian meteorological service**:  
<https://weather.bg/1en/index.php?koiFail=bg2&lng=0>
- The prohibition is enforced if the **maximum daily temperature** in Bulgaria is forecasted to reach or exceed **30°C** for **two consecutive day**
- Applies to non-air-conditioned vehicles.
- Includes both transit and final destination routes.
- The start of the prohibition will be announced via a circular **72 hours in advance**
- Ruminant shipments at Hungarian rest stations **cannot continue** toward Turkey in non-air-conditioned vehicles during the prohibition.



# Animal welfare third countries-actions

## Data Submission Requirements (June–August):

- **Mandatory Documents:**
  - Journey log.
  - Printed temperature data ("print out") from the vehicle's recording system.
    - **Content:** Maximum 20-minute intervals, including identification details (date, license plate).
- **Submission Deadline:** Within 2 weeks after arrival.



## 2. Penalties for Non-Compliance:

- **For Transporters Licensed in Hungary:**
  - Notification to Nébih and suspension of transport activities for 1 month.
  - Recorded in the TRACES system.
- **For Transporters Licensed in Other EU Member States:**
  - Report sent to Nébih ([aai@nebih.gov.hu](mailto:aai@nebih.gov.hu)) for further action through the Member State contact network.

## Main challenges

### Transport by truck

Hungarian companies are in the top three of the EU for sending animals to Turkey. Delay at the border. Planning.

### Complex transport– Truck/ Ship/ Truck

THE SITUATION - in several cases :

- Cattle or calf consignment from Hungary (County Zala )– from assembly centre or establishment – is being transported by truck to the nearest port (Port of Koper (SI) or Rasa (HR)) and being transported further into Middle Eastern countries (further keeping, slaughter) by livestock vessel and truck again.
- Long-distance transport ( generally 6-7 days)
- The first truck-transport within EU countries takes less than 8 hours to the exit point/port
- The means of transport and also the ownership changes at the port
- The vessel may be owned transporter in third country . The whole transport is usually organized by the buyer – company from third countries, only the first part by truck is made by company from EU.



## Main challenges

### Middle-East and Turkey

- Question of responsibility- 3rd country organizer
- AJL is brought back from the port after the official veterinarian countersigned it. No feedback after leaving the exit point
- Enforcement of animal welfare requirements during transport remains a challenge especially in third countries
- **Planning until the place of destination, but after leaving the EU no more**

# Thank you

---

Whole Journey Scenario workshop on long-distance transport for Europe

16 – 18 December 2024, Paris, France



World Organisation  
for Animal Health  
Founded as OIE