

# WOAH Platform on Animal Welfare for Europe

Implementation of WOAH standards

Members' self-assessment tool on transport  
and next activities

---

Whole Journey Scenario workshop on long-distance transport for Europe

16 – 18 December 2024, Paris, France

---



World Organisation  
for Animal Health  
Founded in 1924



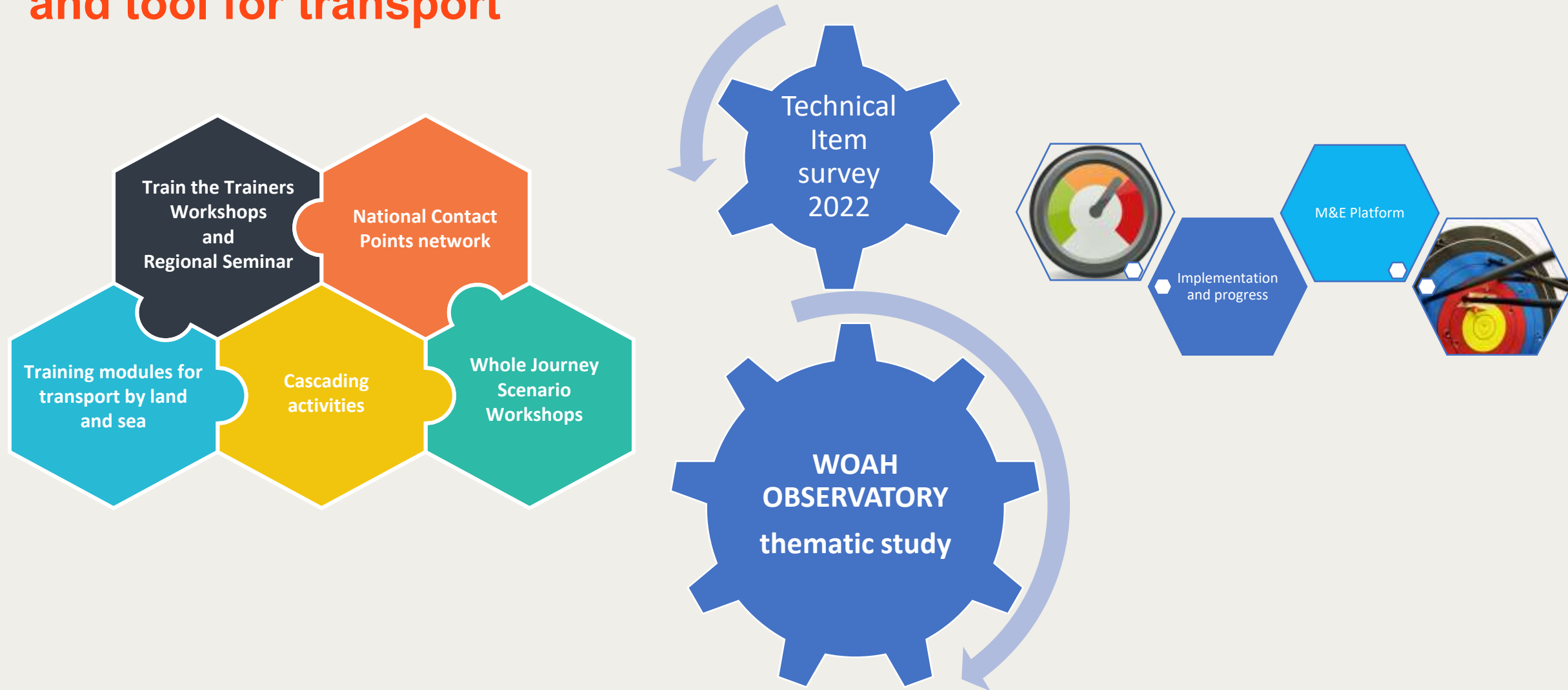


## Transport of animals





# Development of a self-assessment and monitoring methodology and tool for transport





# Self-Assessment and Monitoring System for Dog Population Management



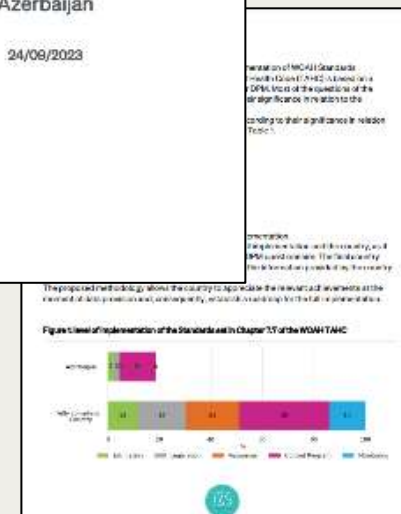
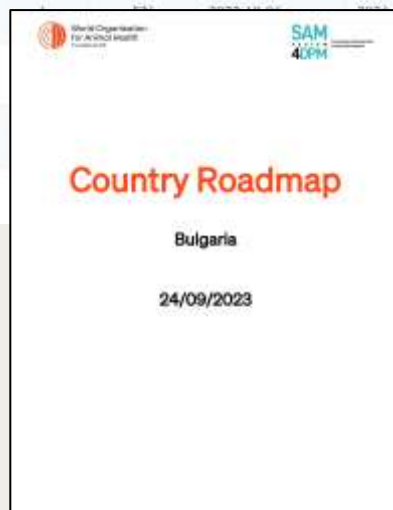
Survey's Reports

Show 10 entries Search:

Survey title	Survey Version	Service Language	Start date	End date	Profile	Country
Country Report						Italy

Country Authority: Italy

Previous Next





## Objectives

- understand the current situation in member countries regarding the implementation of WOAH standards on the transport of animals (Chapter 7.2 and Chapter 7.3).
- help to identify gaps and areas for improvement and
- measure progress over time
  
- Platform M&E system



## self-assessment and monitoring tool for transport

Data  
collection

Processing  
and analysis

Presentation  
of results



# Questionnaire structure

## Responder details

### Transport by sea

- Overview
  - Legislative framework
  - Competed Authority (structure, competence)
- Chapters sections
  - requirements and procedures for approval for facilities, containers, for the holding and transporting of animals.
  - responsibilities competence standards, and capacity building
  - planning the journey and its verification
  - contingency plans
  - existing working/operating procedures, best practices guidelines
  - evaluation and monitoring of the implementation of standards and requirements

### Transport by land

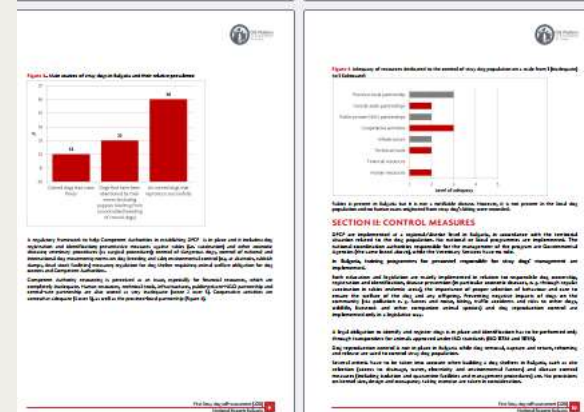
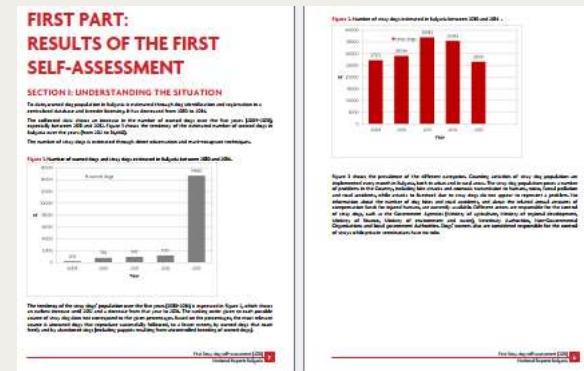
- Overview
  - Legislative framework
  - Competed Authority (structure, competence)
- Chapters sections
  - requirements and procedures for approval for facilities, containers, vehicles for the holding and transporting of animals.
  - responsibilities competence standards, and capacity building
  - planning the journey and its verification
  - contingency plans
  - existing working/operating procedures, best practices guidelines
  - evaluation and monitoring of the implementation of standards and requirements

## Submission validation



## Results visualisation

- dashboard
- country reports
- regional/subregional report







## Developing self-assessment and monitoring tool on animal transport

### External consultation (method)

- conduct a thorough review of the methodology
- determine the most appropriate elements for developing standards in transport.
- address whether the proposed questionnaire effectively aligns with the intended objectives
- Designing a data analyst framework focusing on processes for data analysis, report generation and results visualisation

### External consultation (IT platform)

- define and describe a process and structure, data analysis
- develop IT platform, database, user interface and dashboard

# 4th Action Plan for 2024 - 2026

## TRANSPORT OF ANIMALS

2024

2025

2026



Regional WJS workshop Europe



Multi-regional WJS workshop Europe/NorthAfrica/Middle East



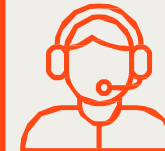
Regional WJS workshop Europe



Meeting of the NCPT network



Meeting of the NCPT network



Meeting of the NCPT network

Development of a self-assessment and monitoring tool on transport

## 5th meeting of regional network of National Contact Points on long-distance transportation in Europe

Thessaloniki, Greece, 11 - 13 March 2025



- Field visit a beef calves' rearing farm plus type 2 transport vehicles there for demonstration / exercise
- sharing Greece experience port/custom authorities
- Proposed topic: roll on roll off, transport during hot weather, contingency plans, fitness for travel.