

The National Sanitary Veterinary and
Food Safety Authority of Romania



PPR EPIDEMIOLOGICAL SITUATION

- UPDATE -



ROMANIA

GF -TAD PPR

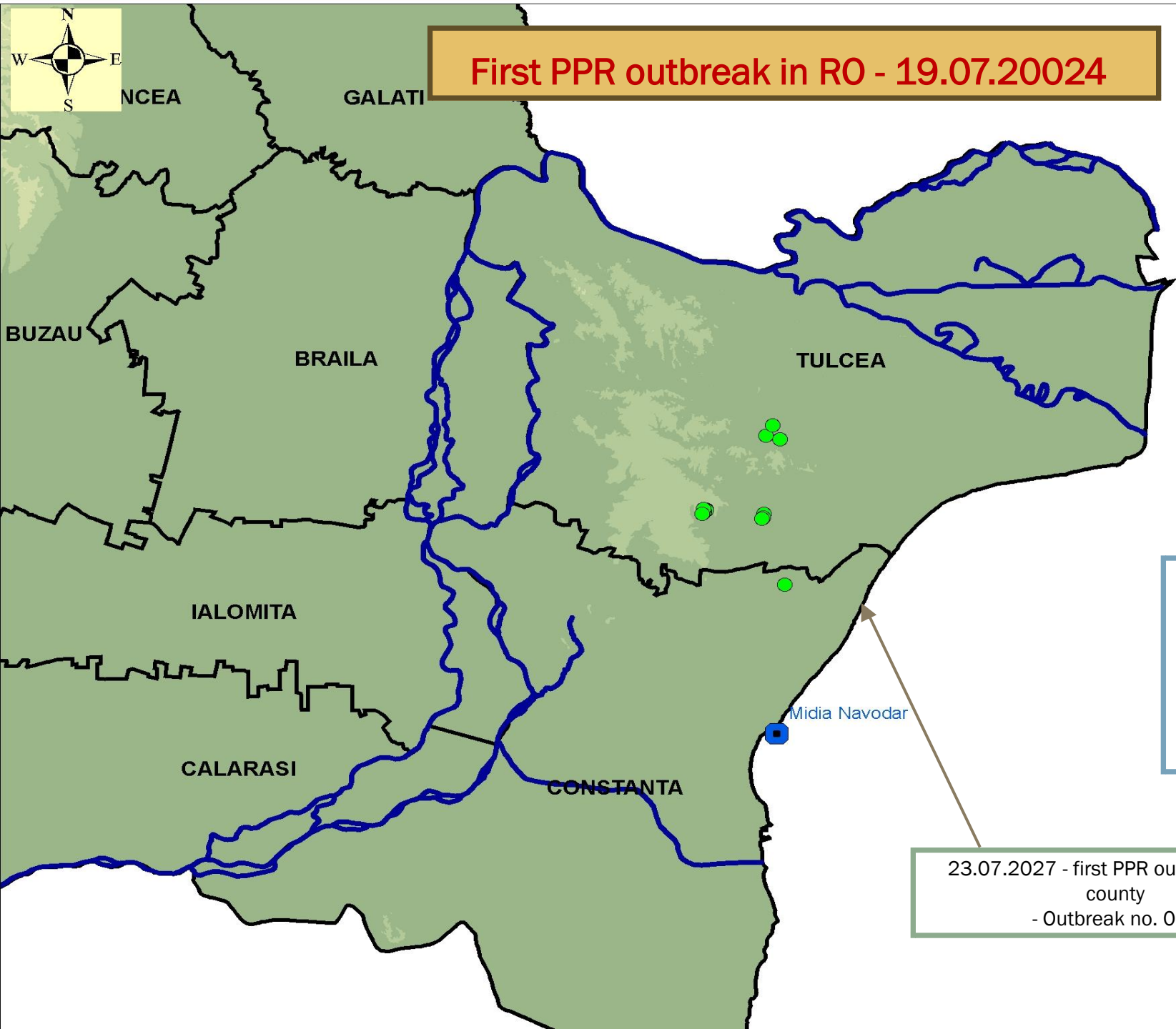
04.09.2024



First PPR outbreak in RO - 19.07.2024

Legend

- Port_Midia_Navodari Events
- judete
- PMR_19_24_07_2024
- dunarea



19 - 24.07.2024:

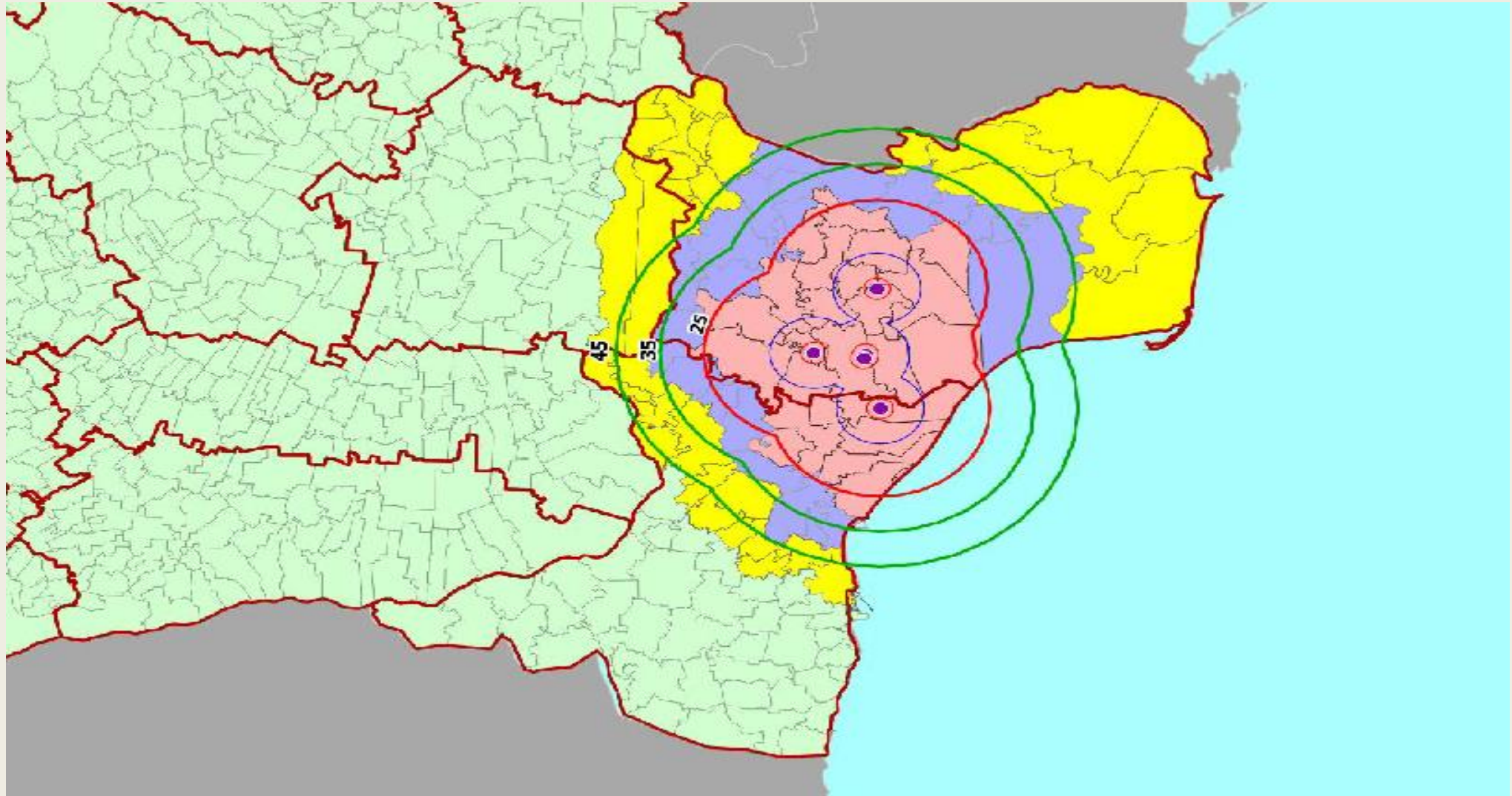
- 4 big comm farms
- 7 small comm farms
- 6 backyards

- TOTAL ~ 100.000 sheep and goats

23.07.2027 - first PPR outbreak in CT county
- Outbreak no. 06 -

BLACK SEA

CID (EU) 2024/2119 of 29 July 2024



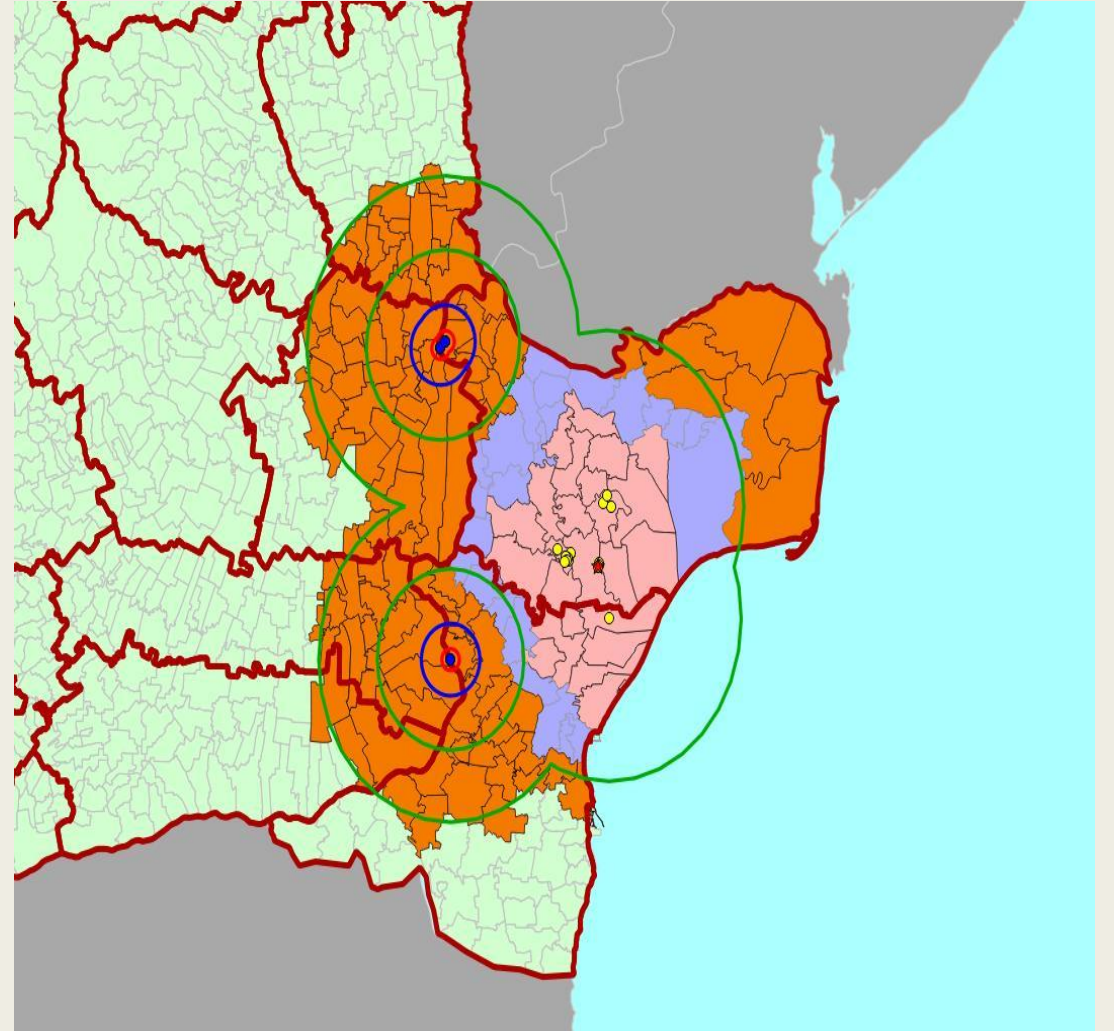
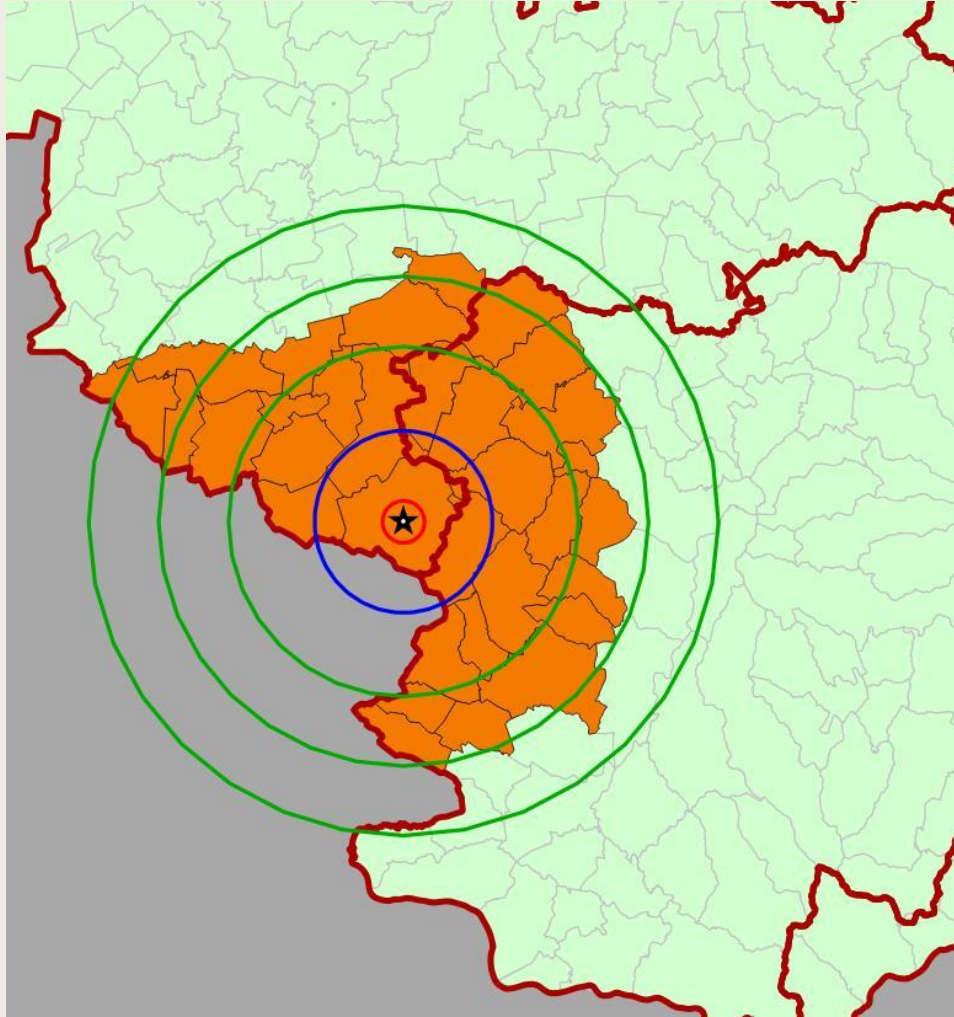


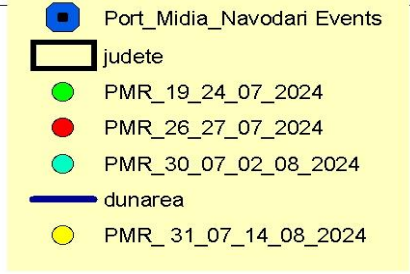
26.07.2027 - PPR outbreak in TM county
- Outbreak no. 19 -



- 19 - 30.07.2024:
- 8 big comm farms
 - 14 small comm farms
 - 15 backyards
 - TOTAL ~200.000 sheep and goats

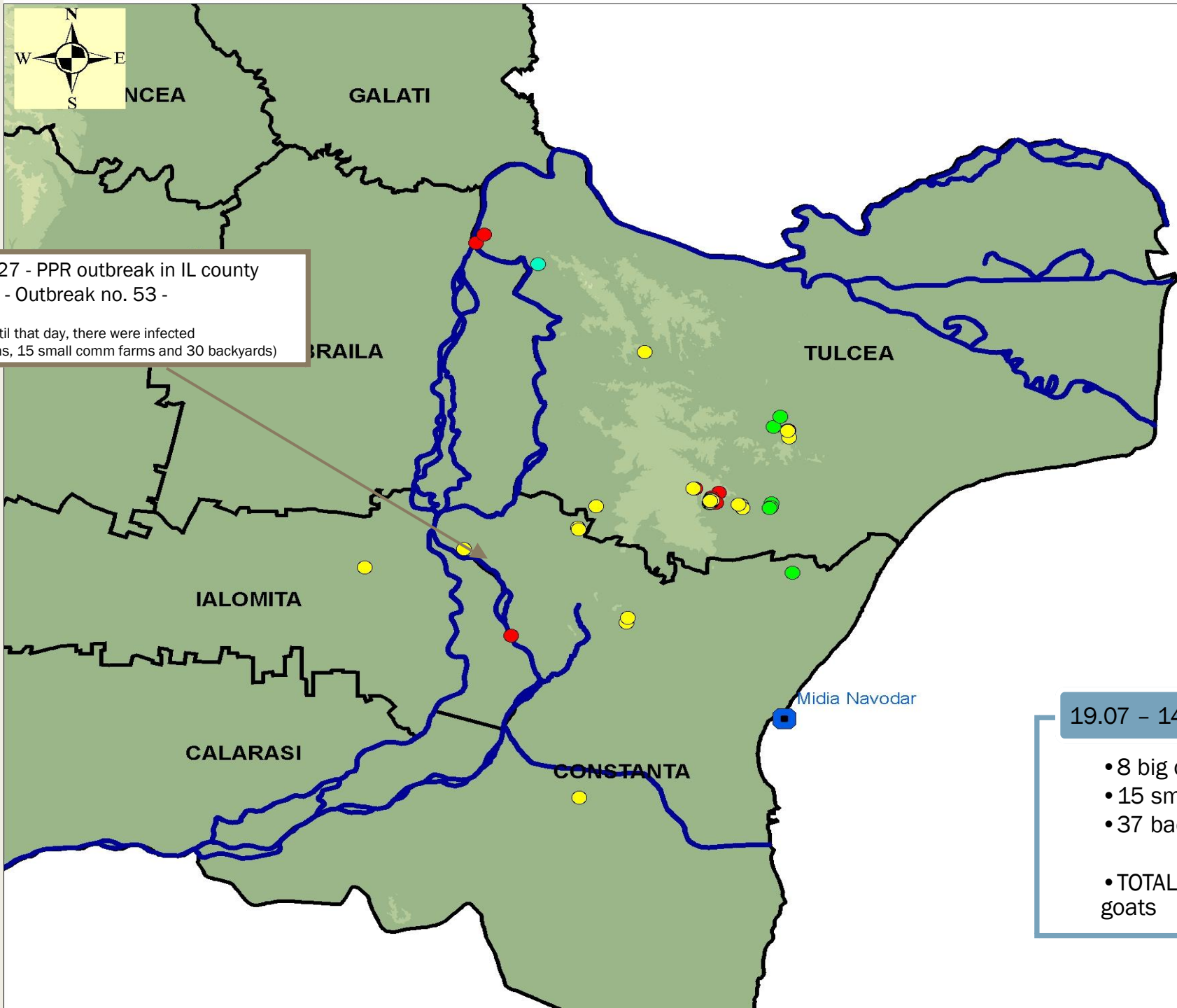
CID (EU) 2024/2154 of 06 August 2024





04.08.2027 - PPR outbreak in IL county
- Outbreak no. 53 -

(Until that day, there were infected
8 big comm farms, 15 small comm farms and 30 backyards)



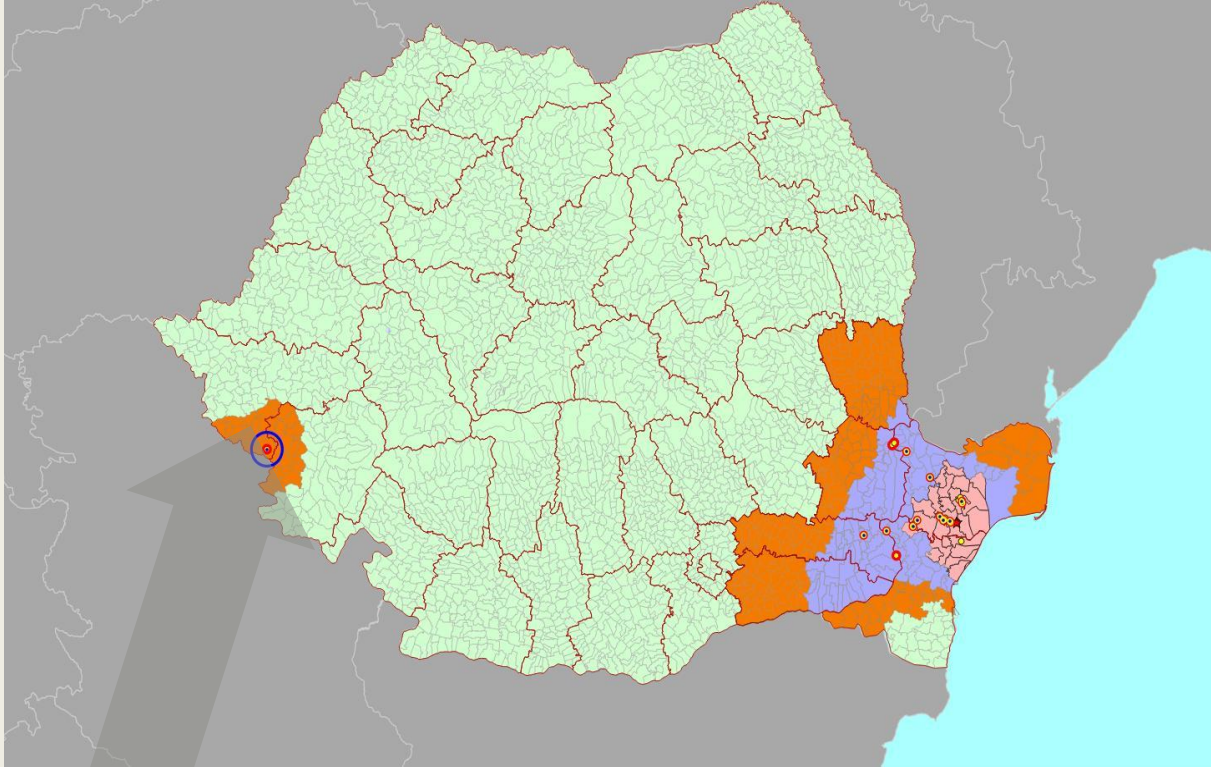
19.07 - 14.08.2024:

- 8 big comm farms
- 15 small comm farms
- 37 backyards

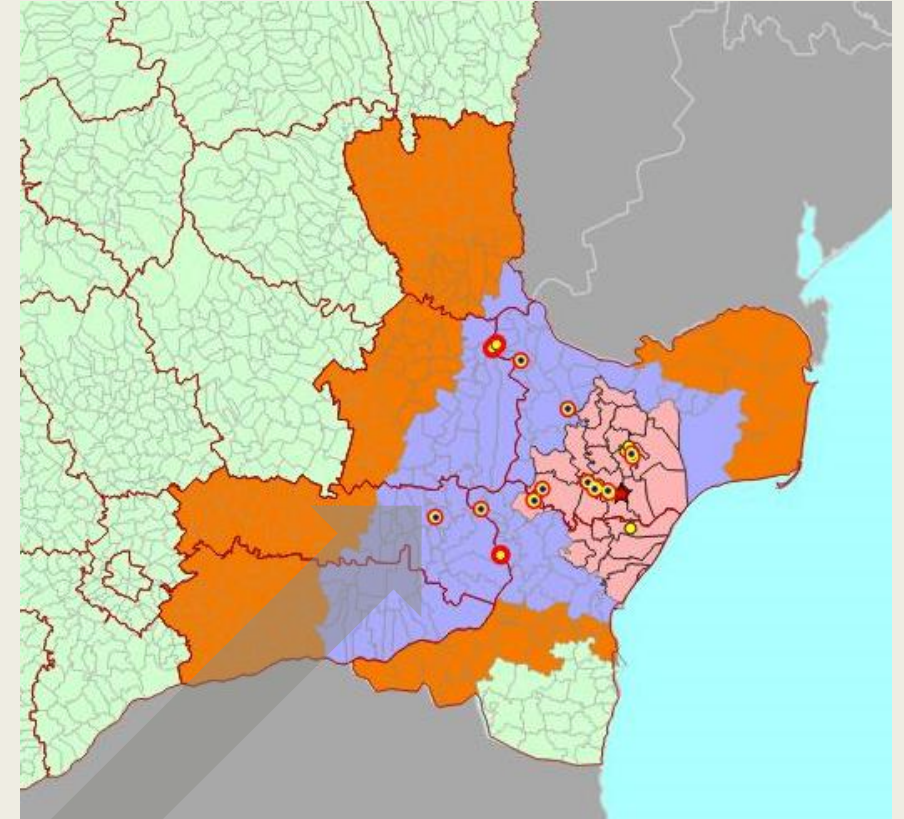
BLACK SEA

- TOTAL ~235.000 sheep and goats

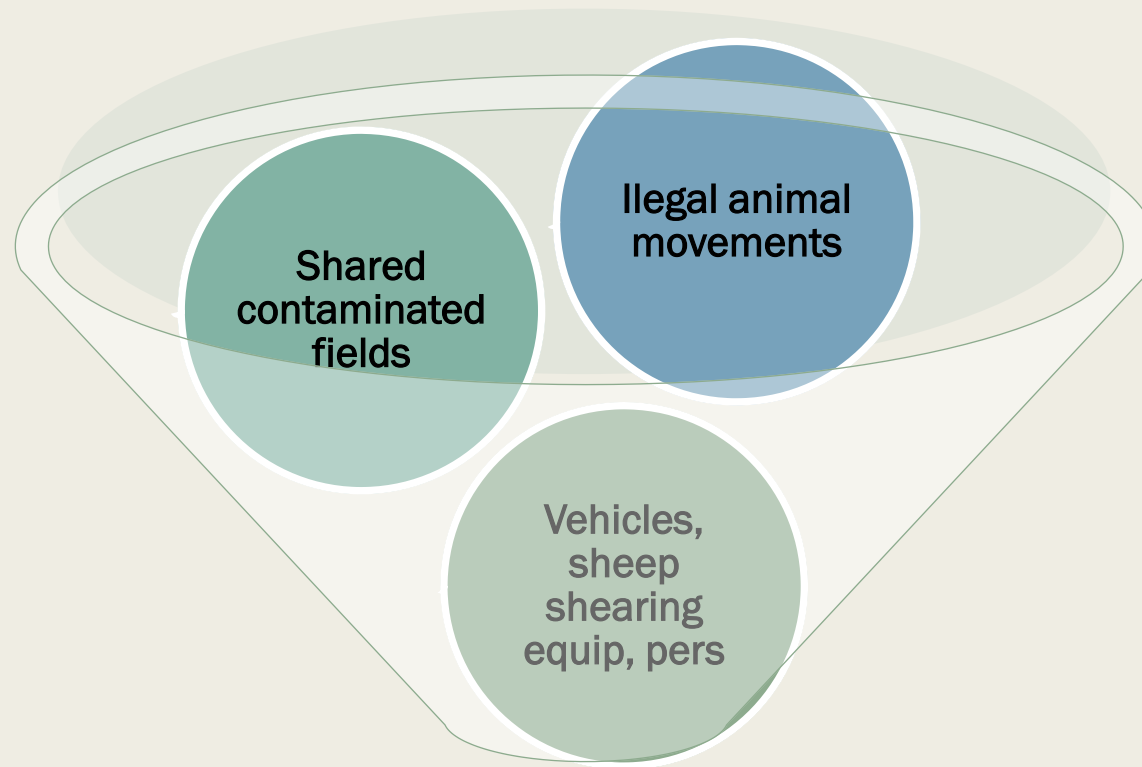
CID (EU) 2024/2203 of 29 August 2024



5 outbreaks between 02.08.2024- 30.08.2024 in Timis county, Clopodia village; investigations are going



1 new outbreak on 27.08.2024 in Tulcea county. Vasile Alecsandri village; investigation on going



66 outbreaks in 47 days

~ 235.000 animals affected



Affected animals/type of holding:

- big commercial farms – 8 outbreaks
- small commercial farms – 15 outbreaks
- backyards – 43 outbreaks

Control Measures Implemented

Zoning:

- Protection Zone: Extended to 25 km
- Surveillance Zone: Extended to 35 km
- Supplementary restriction zone: Extended to 45 km

Total Stamping Out: Culling of all animals in affected herds

Sanitary Burial: On-site burial of carcasses

Animal Movement Control: Enforcement of movement restrictions

Prohibition of Dispatch: Outside restriction zones

Cleaning and Disinfection: Thorough procedures

Biosecurity Measures: Enhanced measures

Surveillance: Comprehensive clinical examination within zones with sampling

From EUVET recommendations:
provisions on appropriate biosecurity
measures for people and means of transport

- **Check on compliance with the movement ban** at the entrance/exit/within the county (inter-institutional collaboration established by the CLCB decision)
- Appropriate **biosecurity measures for persons** coming into contact with animals in possession or entering or exiting the facility. Example: people who shear animals. Replacing single-use plastic equipment with easy-to-disinfect rubber equipment
- Appropriate **biosecurity measures for vehicles** entering or leaving the facility. Avoiding, as the case may be, the entry of animal/fodder transport means into the holding.

29.07 – 01.08.2024
EUVET mission

Additional measures

- National Center for Disease Control Decision
- **Traffic controls** (Vets&Police&Jandarms) to identify and discourage illegal movements of sheep and their products;
- **Intensified checks** on compliance with biosecurity measures, movement restrictions
- Awareness campaigns on **biosecurity measures**.
- **Intensified sampling**

Samples from NEGATIVE holdings
(whole country)

PCR

serology

482

2719