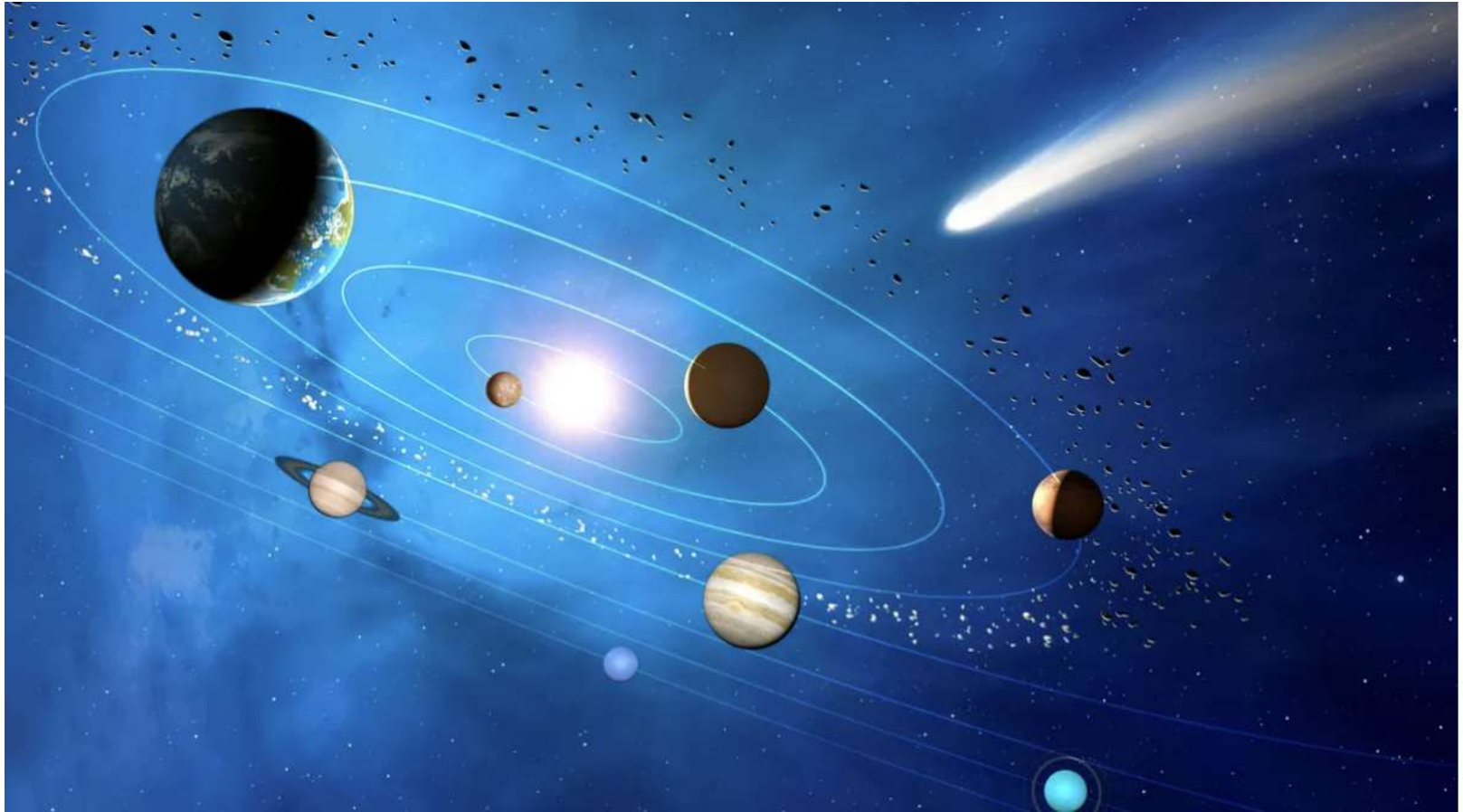


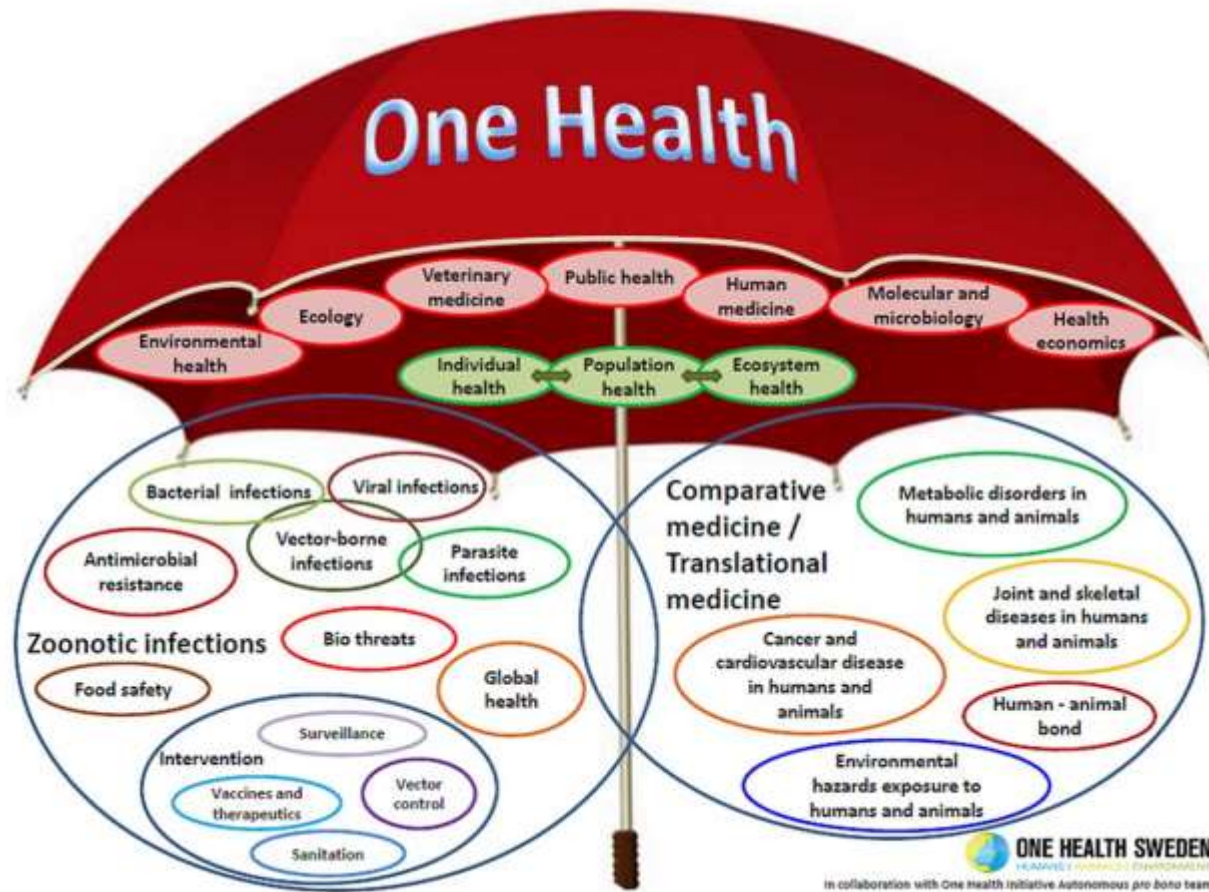
Animal Welfare **a holistic view**

Dr. Rebeca García Pinillos



(Image credit: MARK GARLICK/SCIENCE PHOTO LIBRARY via Getty Images)

'ONE HEALTH'



'ONE WELFARE'



Garcia Pinillos et al. Veterinary Record 2016, 179: 412-413

<http://veterinaryrecord.bmj.com/content/179/16/412/DC1/embed/inline-supplementary-material-1.pdf>

ANIMAL WELFARE, ENVIRONMENT AND SUSTAINABLE DEVELOPMENT (AWESDE) NEXUS

- Resolution adopted by United Nations Environment Assembly (02-March, 2022), Nairobi, Kenya
- Sponsored by 7 Member States: Ghana, Ethiopia, Burkina Faso, Senegal, Democratic Republic of Congo, South Sudan and Pakistan.
- ✓ Requests Executive Director of UNEP:
 - ✓ To submit the report for peer review by Member States;
 - ✓ To report to the UN Environment Assembly at its sixth session
 - ✓ Steering committee
 - ✓ Consultation – 193 UNEP member countries
 - ✓ Scoping report



ANIMAL WELFARE, ENVIRONMENT AND SUSTAINABLE DEVELOPMENT (AWESDE) NEXUS

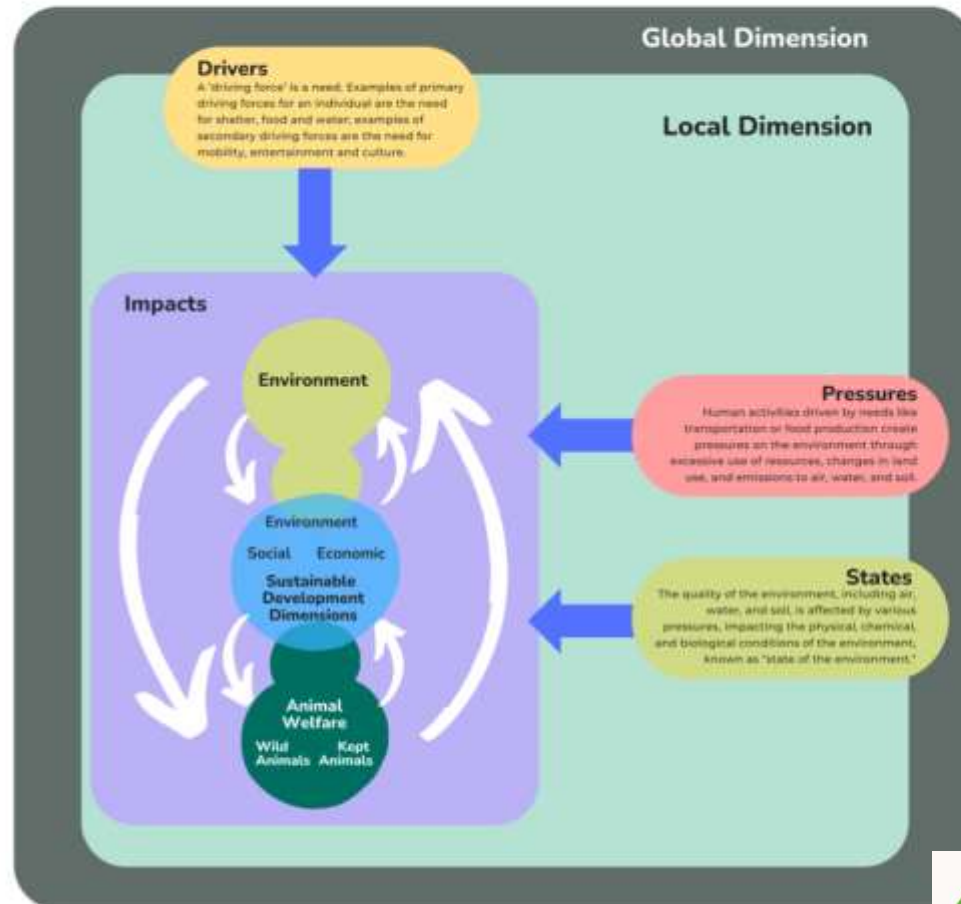


Executive Summary	Introduction	1. Foundation concepts and definitions	2. Sustainable Food Systems (aquatic and terrestrial) and diets	3. Ecosystems management
4. Earth resources and extractives	5. Knowledge management, education, and research	6. Global mandates, roles and responsibilities	7. Economics and trade	8. Policy Recommendations



AWESDE DPSI Framework

Figure 1: AWESDE Drivers, Pressures, State, Impact (DPSI) Framework



'ONE WELFARE'



One Welfare describes the interrelationships between animal welfare, human wellbeing and the physical and social environment.

The three pillars of One Welfare



@ONEWELFARE

'ONE WELFARE'

Table 1. Relationship between One Welfare and the five freedoms, provisions and domains (*adapted from FAWC, 2003 and Mellor, 2016).

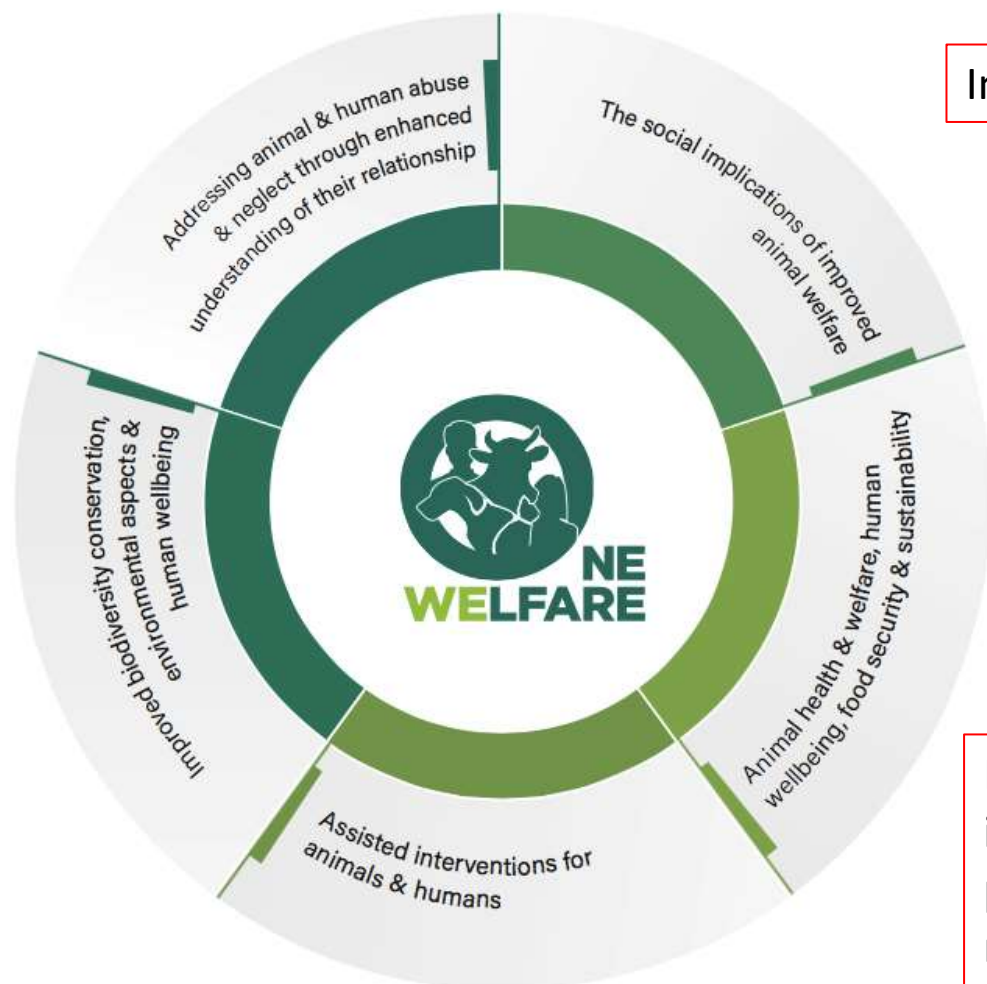
Five freedoms, provisions and domain*			One Welfare connections
<u>Health</u>	Freedom from pain, injury and disease	Prevention or rapid diagnosis and treatment	Improved animal welfare helps sustain a better immune system and underpin human livelihoods, having positive impacts on productivity, reduction of antimicrobial use or longer working lives Animals sick and/or in pain may display unwanted behaviours which may negatively impact animal-human interactions and compromise welfare

The three pillars of One Welfare



@ONEWELFARE

'ONE WELFARE' FRAMEWORK



Interdisciplinary collaboration

Food security and sustainability

Improved understanding of the value of high welfare standards

Overarching support for the sustainable development agenda

Recognition and implementation of increasing public recognition of ethical and moral imperatives

'ONE WELFARE FRAMEWORK' – SECTION 1



The Connections Between Animal and Human Abuse and Neglect





MARCO ONE WELFARE' – SECCION 1



Ref: National Link Coalition

'ONE WELFARE FRAMEWORK' – SECTION 2



The social implications of animal welfare





**'We have five in our bed -
any more and I wouldn't
sleep!': meet the extreme
dog owners**

Photo: Dyland Collard - Source: <https://www.theguardian.com/lifeandstyle/2024/mar/30/we-have-five-in-our-bed-any-more-and-i-wouldnt-sleep-meet-the-extreme-dog-owners>

'ONE WELFARE FRAMEWORK' – SECTION 2



'ONE WELFARE FRAMEWORK' – SECTION 2



loop Caribbean News 3 min read

La Soufriere: A sad ending for some animals in the Red Zone

Loop News | April 28, 2020 02:10 PM ET



This Chateaubelair resident returned to the Red Zone for his dog. (Photo: Christina Smith)



Source: <https://tt.loopnews.com/content/la-soufriere-sad-ending-some-animals-red-zone-5>

https://www.antena3.com/noticias/sociedad/efectivos-emergencias-tratan-desalojar-animales-atrapados-erupcion-volcan-palma_20210922614ae38c8b6450000191b085.html

'ONE WELFARE FRAMEWORK' – SECTION 3



Animal health and welfare, human wellbeing, food security and sustainability



'ONE WELFARE FRAMEWORK' – SECTION 3



An Roinn Talmhaíochta, Bia agus Mara
Department of Agriculture,
Food and the Marine

Working Together for Animal Welfare

Ireland's Animal Welfare Strategy
2021-2025

www.gov.ie/agriculture

Ireland's Animal Welfare Strategy

Image with the kind permission of THE WELFARE FUND.
© 2020 www.welfarefund.org

27

PRECISION SLAUGHTER a One Welfare solution

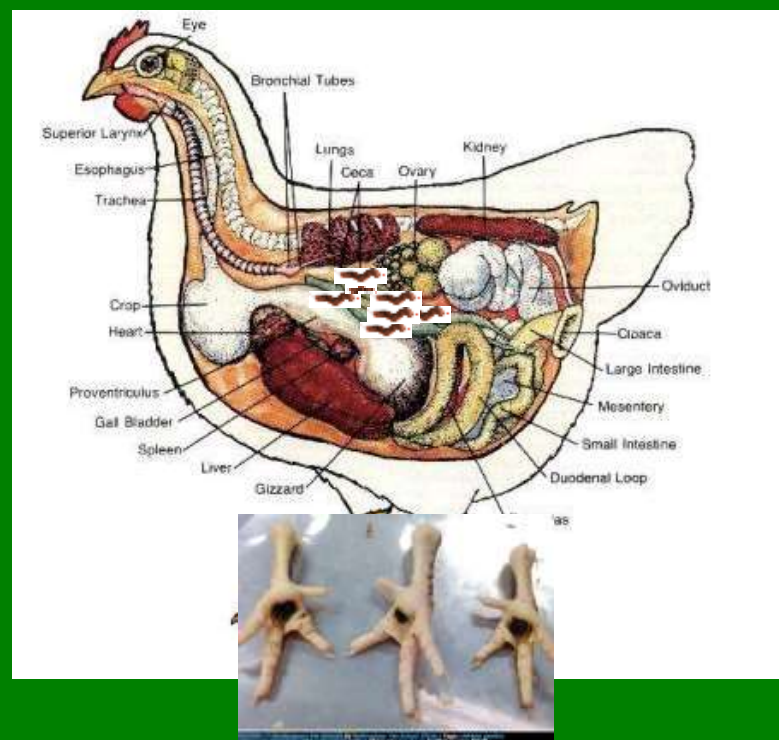


Ref: Garcia Pinillos, R. (2018) We need to make more use of technology in the slaughter industry to improve welfare *Veterinary Record* **183**, 198-199.

'ONE WELFARE' FRAMEWORK

Links between improved welfare and food safety

A study of broilers in GB showed that *Campylobacter*-positive batches of caeca were associated with higher levels of rejection due to infection and digital dermatitis



Appl Environ Microbiol. 2008 Sep;74(17):5408-13. doi: 10.1128/AEM.00462-08. Epub 2008 Jul 18

'ONE WELFARE' FRAMEWORK



The EFSA Journal (2005) 197, 1-23, The welfare aspects of various systems of keeping laying hens

Opinion of the Scientific Panel on Animal Health and Welfare on a request from the Commission related to the welfare aspects of various systems of keeping laying hens

(Question N° EFSA-Q-2003-092)

Adopted by the AHAW Panel on 10th and 11th November 2004

Chapter 4.8 on Food safety affected by different production systems (Microbiological and Chemical hazards) was jointly adopted by the BIOHAZ Panel on 21st October 2004 and the CONTAM Panel on 1st February 2005 respectively

SUMMARY OF OPINION

<https://efsa.onlinelibrary.wiley.com/doi/epdf/10.2903/j.efsa.2005.197>

'ONE WELFARE' FRAMEWORK



Factors related to bird's welfare

Genetic selection

Bird needs

Management procedures
(i.e. beak trimming)

CBRN

Factor's related to
farmer/staff wellbeing

Consumers – (i.e. egg
quality)



<https://efsa.onlinelibrary.wiley.com/doi/epdf/10.2903/j.efsa.2005.197>

'ONE WELFARE FRAMEWORK' – SECTION 4



Assisted Interventions Involving Animals, Humans and the Environment



'ONE WELFARE FRAMEWORK' – SECTION 4



Interactions between animals, humans and the environment



Ref: Case Study 17 – Green Chimneys (by Green Chimneys, USA)

'ONE WELFARE FRAMEWORK' – SECTION 4



Human–Animal Bond (HAB)

- Animal assisted interventions (i.e. post traumatic stress disorder treatment)
- Animal assisted activities (i.e. guide dogs, hearing dogs, service dogs, therapy dogs, dogs visiting homes for the elderly)
- Animal assisted therapy (i.e. assistance animals to help rehabilitate and support those with physical or mental health conditions such as autism)
- Rescue and human support programs (i.e. rescue animals or laboratory animals)

ENVIRONMENT

'ONE WELFARE FRAMEWORK' – SECTION 5



Sustainability: Connections Between Biodiversity, the Environment, Animal Welfare and Human Wellbeing



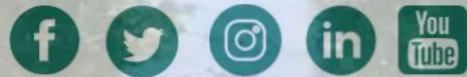
'ONE WELFARE FRAMEWORK' – SECTION 5



- Closely connected to Section 3
- Focuses on the wider and more global aspects related to conservation, beyond livestock
- Captures important topics relevant for the future success of sustainable development goals across the world that are not fully addressed elsewhere.



www.onewelfareworld.org



onewelfare

CIC No: 11376147