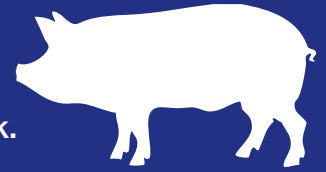


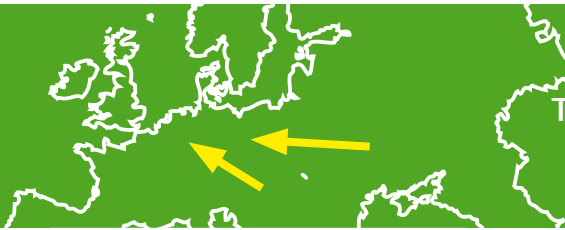
African Swine Fever is getting closer.... Keep it out!

Did you know?

African Swine Fever (ASF) is a disease that affects only pigs. It has a devastating impact on productivity and the ability of a country to sell pork.



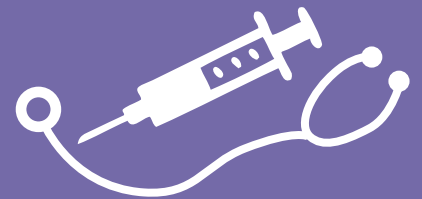
Spread



The risk of spread is greatest from pigs eating pork products originating from countries where ASF is present. ASF is currently spreading through Eastern and Central Europe.

Remember

Very sick pigs or unexplained deaths should be assessed by your vet. By law suspected Swine Fever must be reported to DAERA.



- Maintain strict biosecurity on your farm.
- Do not allow people who may have been in contact with other pigs on to your farm for at least 72 hours.
- Staff and visitors should not bring pig meat products on to the farm.

Tip 1: Biosecurity

Tip 2: Feeding

Do not feed food scraps to pigs. Feeding catering or kitchen waste to pigs is illegal.



Tip 3: New Stock

Only purchase pigs and semen from reliable/known sources.



Tip 4: Stay Aware

Visit the DAERA website for further biosecurity advice and the latest news on ASF: www.daera-ni.gov.uk/articles/african-swine-fever



Department of
**Agriculture, Environment
and Rural Affairs**

www.daera-ni.gov.uk



**INVESTORS
IN PEOPLE**