

The Portuguese experience in livestock and pet animals' assistance during fires

Maria Correia, DBEA-DSPA, DGAV

18th January, 2024

Cristina Ferradeira, DSAVR Algarve, DGAV

Rosa Rodrigues, DSAVR Centro, DGAV

Yolanda Vaz, DSPA, DGAV



World
Organisation
for Animal
Health
Founded as OIE

Organisation
mondiale
de la santé
animale
Fondée en tant qu'OIE

Organización
Mundial
de Sanidad
Animal
Fundada como OIE



APPROACH BASED ON WOAAH DMC

1st PREPARE RESPONSE / TRAINING

2nd MOBILIZE RESOURCES

3rd ORGANIZED INTERVENTION

4th MONITOR AND ADJUST

5th SHARE EXPERIENCES, IMPROVE

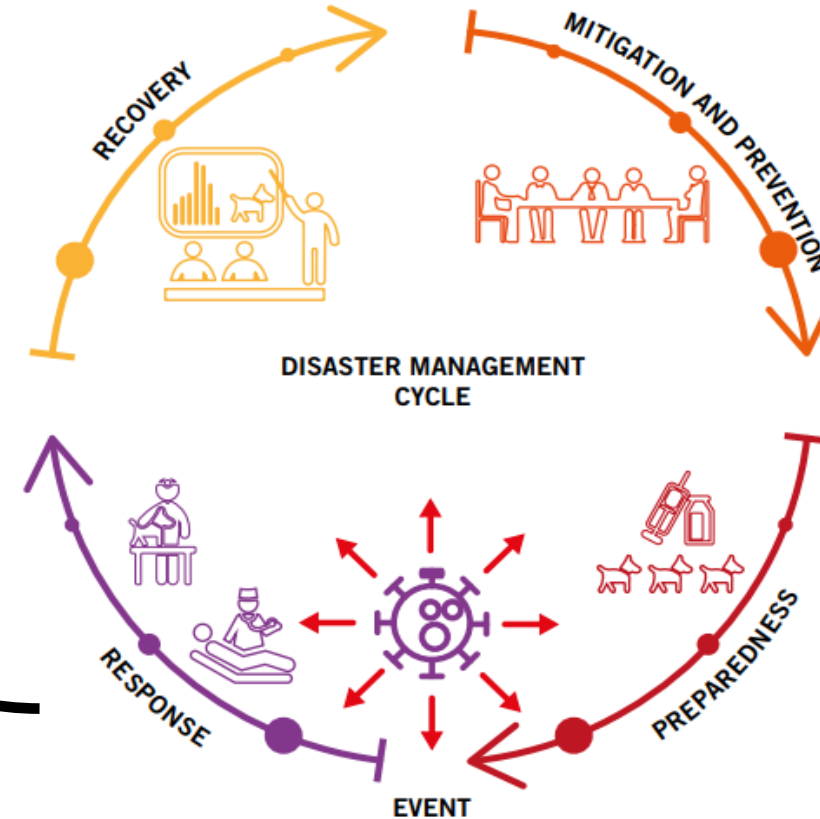


Figure 1. Phases of the Disaster Management Cycle



World Organisation
for Animal Health
Founded as OIE

The most serious events in Portugal

2017

Pedrogão Grande - June 17-24 (dry storm) - 53,000 Ha / 500 M Euro loss

Pinhal Interior - October 15-18 (Ophelia storm) - 241,000 Ha / 275 M Euro

Estimated animal mortality
Ruminants and swine – 1500
Poultry – 130,350
Hives – 1000

Help to farmers
Concentrates – 4500 ton
Hay – 600 ton
Sugar – 48 ton
Financial help Euro – 91.7 M

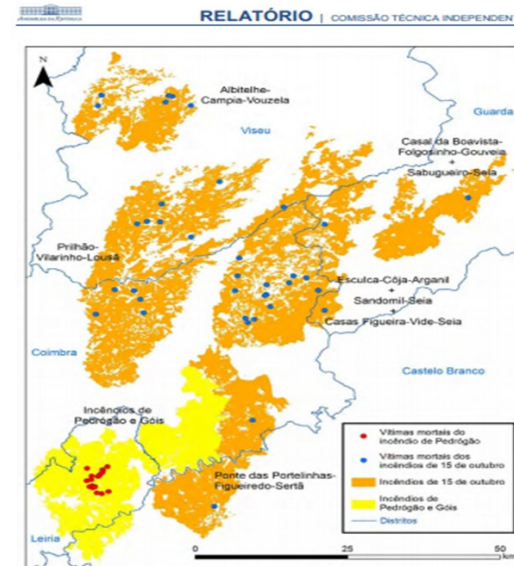
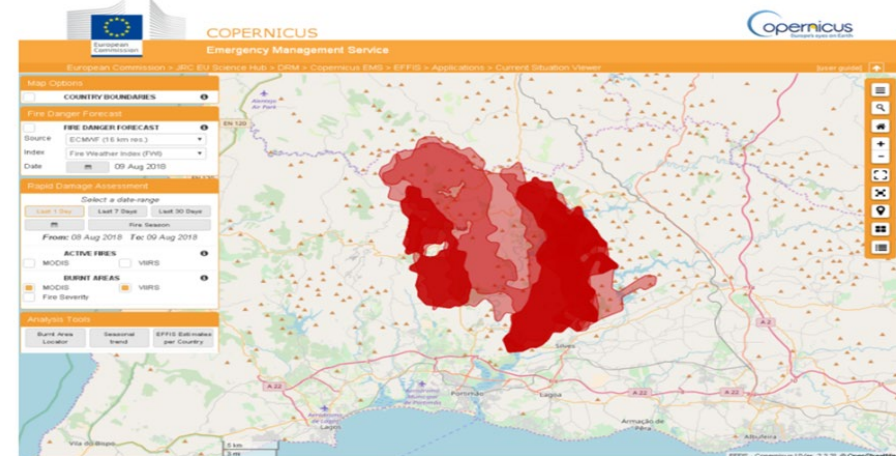


Figura 4.1 Distribuição geográfica dos 38 locais onde ocorreram vítimas mortais na sequência dos incêndios de 15 de outubro e dos 20 locais onde ocorreram vítimas mortais na sequência do incêndio de Pedrogão.

2018

Monchique - August 3-17 (47 °C & 14% H) - 27,635 Ha / 10 M Euro



Área ardida no incêndio de Monchique até ao dia 9 de Agosto

Animal mortality
Ruminants and swine – 180
Poultry – 1,380
Hives – 3,350
Also dogs, pigeons, rabbits

Help to farmers
Concentrates – 5.1 ton
Hay – 64.3 ton
Sugar – 1 ton
Financial help Euro – 4.5 M



The most recent events in Portugal



2021

TAVIRA e CASTRO MARIM

- Reduced impact on animals
- Some hunting dogs managed by Municipal veterinarians
- Other problems managed by owners
- DSAVR helped in communication

2023

CASTELO BRANCO E NELAS

- Reduced impact on animals
- Beekeeping / supply of feed



Forest fires affect domestic and wild animals
→ Preparedness to address both populations



FIRES RESPONSE PHASE



START

→ ANEPC communicate and call the regional coordination operational centre

USE PLANS * / Roles attribution and resources
COMMUNICATE and implement measures

*

DECIR – Plan of emergency coordination of rural fires (heavy equipment)
Plan for response to calamities of vet services



Response to fires events

ANEPC – general coordination

OFFICIAL ENTITIES coordinate specific areas of intervention

- **DSAVR is at the Regional Command of ANEPC -> direct access to affected areas and its progress – needs assessment**

It is necessary:

- **to mobilise human, equipment and material resources for animal rescue and management**

- **coordinate interventions (to be able to use capacities in an efficient way)**

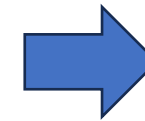
Response to fires events – MOBILIZATION OF RESOURCES

WHO IS IN THE FIELD?

WHO WILL BE IN THE FIELD?

WHO NEEDS TO BE THERE AND WHERE?

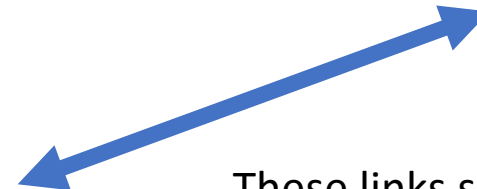
HOW TO COMMUNICATE?



Authority

Coordination capacity

RC ANPC / MUNICIPALITIES / DSAVR-DGAV
FIRE BRIGADE
NATIONAL GUARD / POLICE



Rescuing / treatment

OWNERS

FIELD VETERINARIANS (Livestock organizations)

ANIMAL PROTECTION ASSOCIATIONS

PRIVATE VETS

PUBLIC - VOLUNTEERS

These links should be established in “preparedness”



Response to fires events – INTERVENTION



ANIMAL RESCUE AND EVACUATION – Fire Brigades + Municipalities (Vet)

TREATMENT or EUTHANASIA – Municipal Veterinarians /

DSAVR + Vet Chambers → mobilize small animals vet hospitals

Vets from producers organiz / Private vets / Official vets

CARCASS DISPOSAL – Municipalities / DSAVR – rendering establishments

HOUSING / RESTRAIN – Municipalities

WATER and FEED DISTRIBUTION – Associations / Volunteers / DSAVR: logistic and management
with help of Reg. Serv. Agriculture

ESTABLISH OWNERSHIP and RETURN – Municipalities / DSAVR / ICNF-Environment Institute

Response to fires events – INTERVENTION

ANIMAL RESCUE AND EVACUATION: identify the situation and access the needs



TREATMENT or EUTHANASIA

CARCASS DISPOSAL

HOUSING / RESTRAIN

WATER and FEED DISTRIBUTION

ESTABLISH OWNERSHIP and RETURN

What is the affected area?

Accessibility and safety

Check databases to estimate animal population

Availability of transport for animals

Re-allocation places or mobile Hospital



OFFICIAL ENTITIES

Response to fires events – INTERVENTION

ANIMAL RESCUE AND EVACUATION

TREATMENT or EUTHANASIA

CARCASS DISPOSAL



Clinical examination and triage (**specific places**)

Treatment, specificities for burnings and smoke poisoning (medical materials, drugs)

Euthanasia / disposal (drugs, registration, rendering plants, burial places, instructions, machinery)

Maintenance (medical materials)

HOUSING / RESTRAIN

WATER and FEED DISTRIBUTION

VETS / VOLUNTEERS

ESTABLISH OWNERSHIP and RETURN



Response to fires events – INTERVENTION

ANIMAL RESCUE AND EVACUATION

TREATMENT or EUTHANASIA

CARCASS DISPOSAL

HOUSING / RESTRAIN

WATER and FEED DISTRIBUTION

ESTABLISH OWNERSHIP and RETURN



Relocation of displaced animals

Transport for animals (flocks and herds, equine, poultry, dogs and cats)

Places to restrain / house the animals

Capture of roaming and abandoned animals

OWNERS / VOLUNTEERS



Response to fires events – INTERVENTION

ANIMAL RESCUE AND EVACUATION

TREATMENT or EUTHANASIA

CARCASS DISPOSAL

HOUSING / RESTRAIN

WATER and FEED DISTRIBUTION →

ESTABLISH OWNERSHIP and RETURN



Logistic base

Trucks and drivers / workers to unload

Control of operations – inspection and registration (OFFICIAL VETS)

Distribution to the place where the animals are

VOLUNTEERS / OTHER ENTITIES

Response to fires events – INTERVENTION

ANIMAL RESCUE AND EVACUATION

TREATMENT or EUTHANASIA

CARCASS DISPOSAL

HOUSING / RESTRAIN

WATER and FEED DISTRIBUTION

ESTABLISH OWNERSHIP and RETURN



VOLUNTEERS

Animals with individual identification – search in the databases and return to owner
Other animals – maintain in the rescue centre
Publicity of photos (internet social media)



CONCLUSIONS



NETWORKING → knowledge of local entities (public and private) that can help in disaster situation

KNOWLEDGE OF OWN ROLE and

PREVIOUS IDENTIFICATION OF RESOURCES → Emergency Plan coordinated by ANEPC

COMMUNICATION → regional / local Civil Protection working groups that meet regularly

DO YOUR BEST ...

Thank you



12, rue de Prony, 75017 Paris, France
T. +33 (0)1 44 15 19 49
F. +33 (0)1 42 67 09 87

woah@woah.int
www.woah.org

[Facebook](#)
[Twitter](#)
[Instagram](#)
[LinkedIn](#)
[YouTube](#)
[Flickr](#)



World
Organisation
for Animal
Health
Founded as OIE

Organisation
mondiale
de la santé
animale
Fondée en tant qu'OIE

Organización
Mundial
de Sanidad
Animal
Fundada como OIE

dgav
Direção Geral
de Alimentação
e Veterinária