



WOAH Strategy on AMR and Importance of monitoring AMU quantities



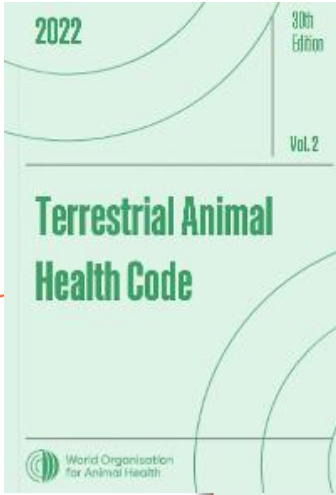
Dr Delfy Góchez
Antimicrobial Resistance and Veterinary Products
Department

Regional ANIMUSE Training for Europe
7-9, Belgrade, Serbia



“If you cannot measure it, you cannot improve it.

Lord Kelvin (1824 – 1907)



<https://www.woah.org/en/what-we-do/standards/codes-and-manuals/terrestrial-code-online-access/>

Ch.6.7. **Introduction** to the recommendations for controlling antimicrobial resistance

Ch.6.8. Harmonisation of national AMR **surveillance and monitoring** programmes

Ch.6.9. **Monitoring of the quantities and usage patterns** of antimicrobial agents used in food-producing animals

Ch.6.10. **Responsible and prudent use** of antimicrobial agents in veterinary medicine

Ch.6.11. **Risk analysis** for AMR arising from the use of antimicrobial agents in animals



<https://www.woah.org/en/what-we-do/standards/codes-and-manuals/aquatic-code-online-access/>

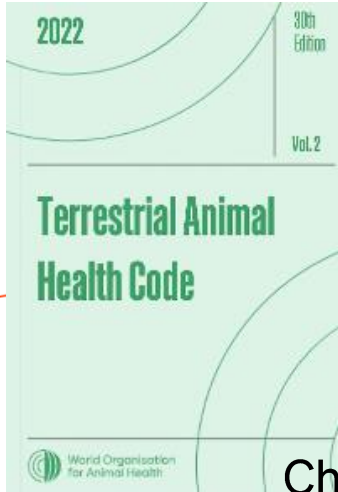
Ch. 6.1. **Introduction** to the recommendations for controlling antimicrobial resistance

Ch.6.2. Principles for **responsible and prudent use** of antimicrobial agents in aquatic animals

Ch.6.3. **Monitoring of the quantities and usage patterns** of antimicrobial agents used in aquatic animals

Ch.6.4. Development and harmonisation of national AMR **surveillance and monitoring** programmes for aquatic animals

Ch.6.5. **Risk analysis** for AMR arising from the use of antimicrobial agents in aquatic animals



<https://www.woah.org/en/what-we-do/standards/codes-and-manuals/terrestrial-code-online-access/>

Ch.6.9. Monitoring of the quantities and usage patterns of antimicrobial agents used in food-producing animals



<https://www.woah.org/en/what-we-do/standards/codes-and-manuals/aquatic-code-online-access/>

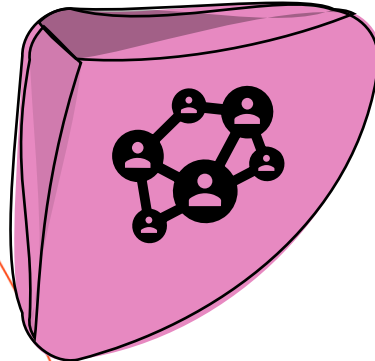
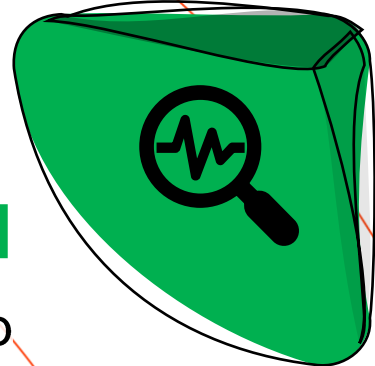
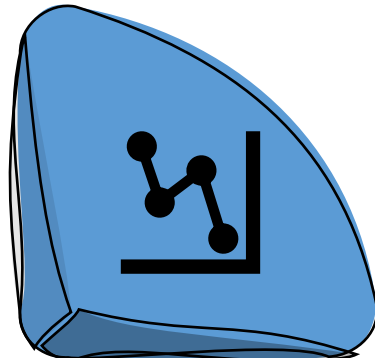
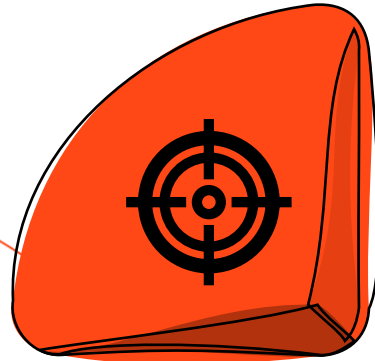
Ch.6.3. Monitoring of the quantities and usage patterns of antimicrobial agents used in aquatic animals



Ch.6.9. & 6.3. Objectives – Importance of monitoring Antimicrobial Use (AMU)

INTERPRETATION

Helping in the interpretation of **AMR surveillance data** and assisting in responding to problems of antimicrobial resistance in a **precise and targeted way**



EVOLUTION

Giving an **indication of trends** in the use of antimicrobial agents in animals over time and **potential associations with AMR** in animals

EVALUATION

Assisting in **risk management** to **evaluate** the **effectiveness** of efforts and mitigation strategies.

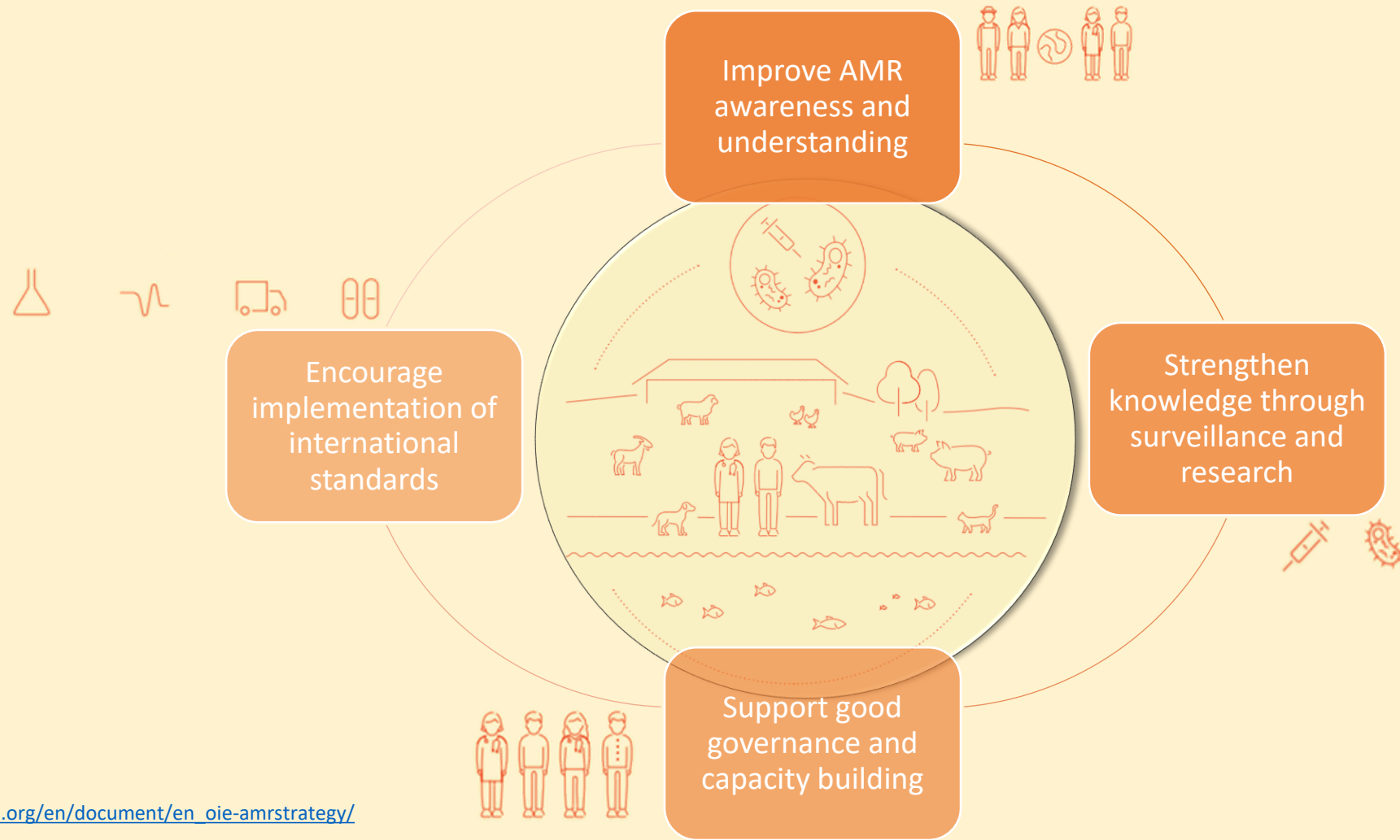
COMMUNICATION

Ensuring **transparency** and communicating on the **risks** (if data published)



WOAH Strategy on AMR and the Prudent Use of Antimicrobials

The WOAH Strategy supports the objectives established in the Global Action Plan on AMR, developed by WHO with strong contribution from FAO and WOAH. It reflects the mandate of the WOAH, through four main objectives:





Strengthen knowledge through surveillance and research

Strengthen knowledge through surveillance and research

AMR National Action Plans



Monitoring and surveillance systems



Report trends in antimicrobial use and AMR



Emergence of organisms with AMR traits



- Support Members in **developing and implementing monitoring and surveillance systems**
- Build and maintain a **database for collecting data on the use of antimicrobial agents in food-producing and companion animals**, with associated analysis and annual reporting
- Enhance the development, use and functionality of WAHIS to allow analysis of data on antimicrobial use
- Guide and support research into alternatives to antibiotics to encourage the development and uptake of new tools, products and methodologies
- Identify and pursue opportunities for public-private partnerships in AMR research and risk management



The database is designed for **YOU** to:

1.

Monitor the type and use of antimicrobial products

2.

Measure trends over time

3.

Trace circulation and use patterns globally

4.

Evaluate the quality and authenticity of antimicrobial products in use





WOAH's Report on Antimicrobial Agents Intended for Use in Animals

OIE Annual report on the use of antimicrobial agents in animals
BETTER UNDERSTANDING OF THE GLOBAL SITUATION
2016
1

OIE Annual Report on Antimicrobial Agents Intended for Use in Animals
BETTER UNDERSTANDING OF THE GLOBAL SITUATION
Fourth Report
4

OIE Annual report on antimicrobial agents intended for use in animals
BETTER UNDERSTANDING OF THE GLOBAL SITUATION
Second Report
2

OIE Annual Report on Antimicrobial Agents Intended for Use in Animals
BETTER UNDERSTANDING OF THE GLOBAL SITUATION
Fifth Report
5

Annual Report on Antimicrobial Agents intended for Use in Animals
7th Report
7

OIE Annual report on antimicrobial agents intended for use in animals
BETTER UNDERSTANDING OF THE GLOBAL SITUATION
Third Report
3

Annual Report on Antimicrobial Agents Intended for Use in Animals
6th edition
6



Result of the Round



Regional Information



Animal Biomass



Antimicrobial Quantities Focused on One Year



Trends on Time

Qualitative data

Antimicrobial quantities
are not available
(Question 1)

Answer Parts A & B
(Questions 1-4)

WOAH AMU
Questionnaire

Reporting Option 1

Antimicrobial quantities
are available (Question1)

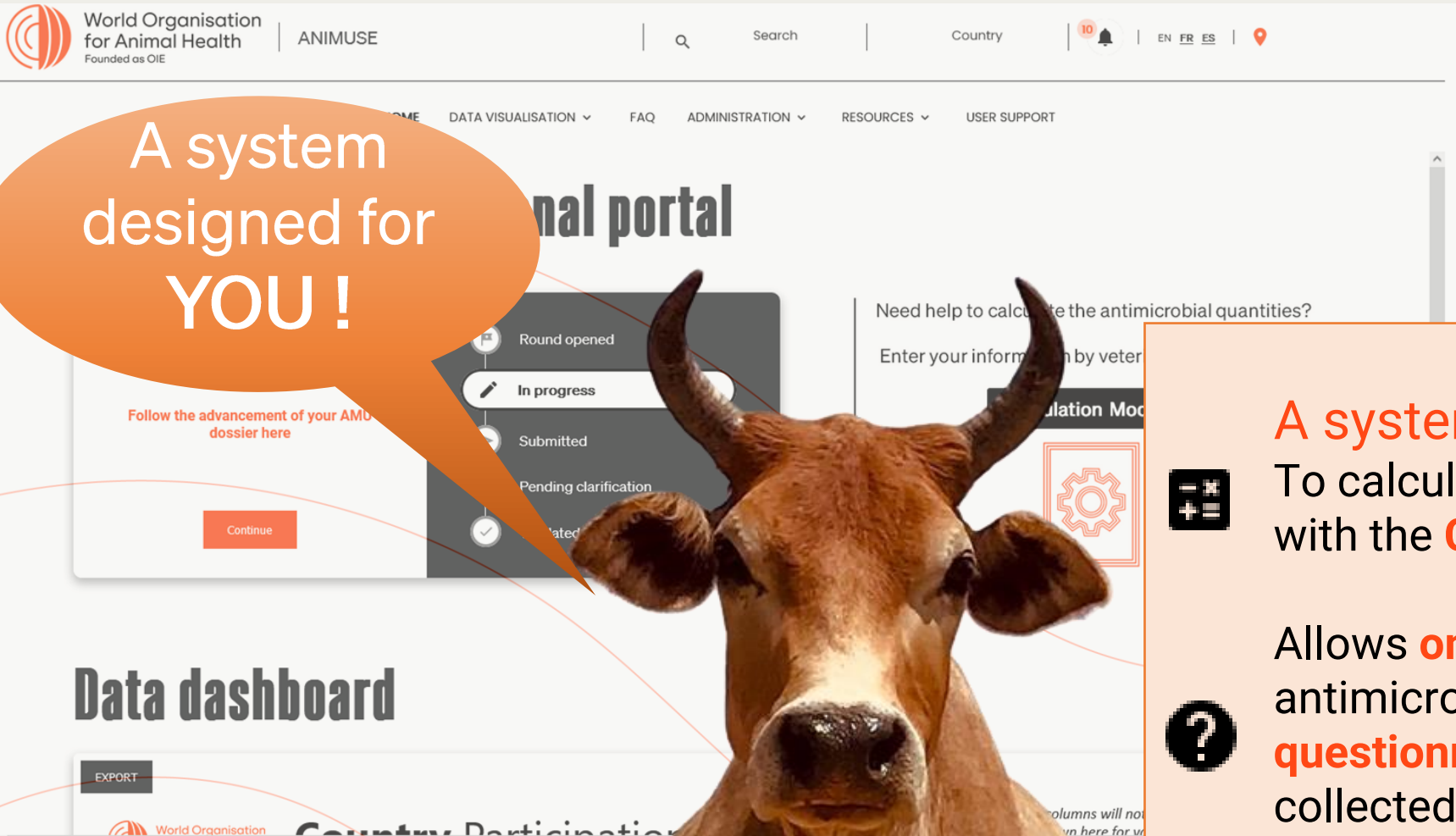
Answer Parts A, B & C
(Questions 1-13)

Reporting Option 2

Reporting Option 3

Quantitative data

Answering the questionnaire and choosing a Reporting Option it
is now easier with ANIMUSE



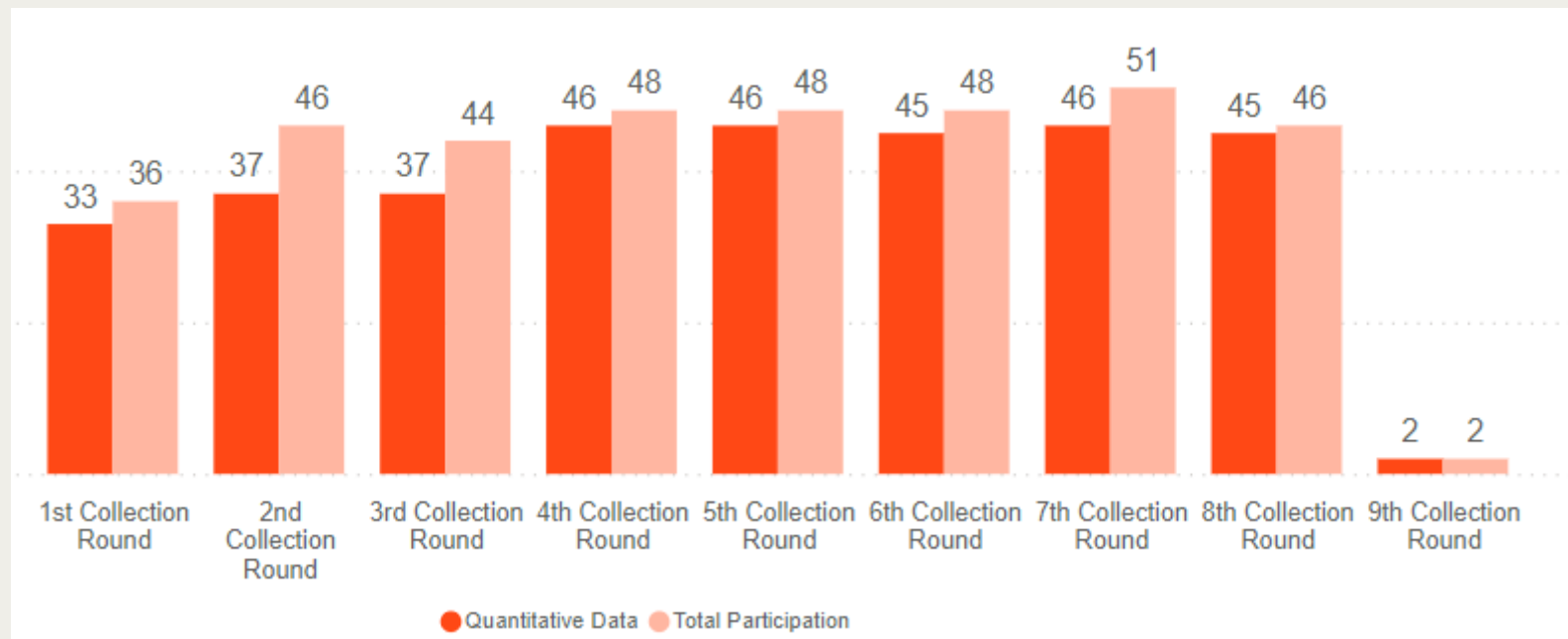
A system
designed for
YOU!

A system designed for **YOU**

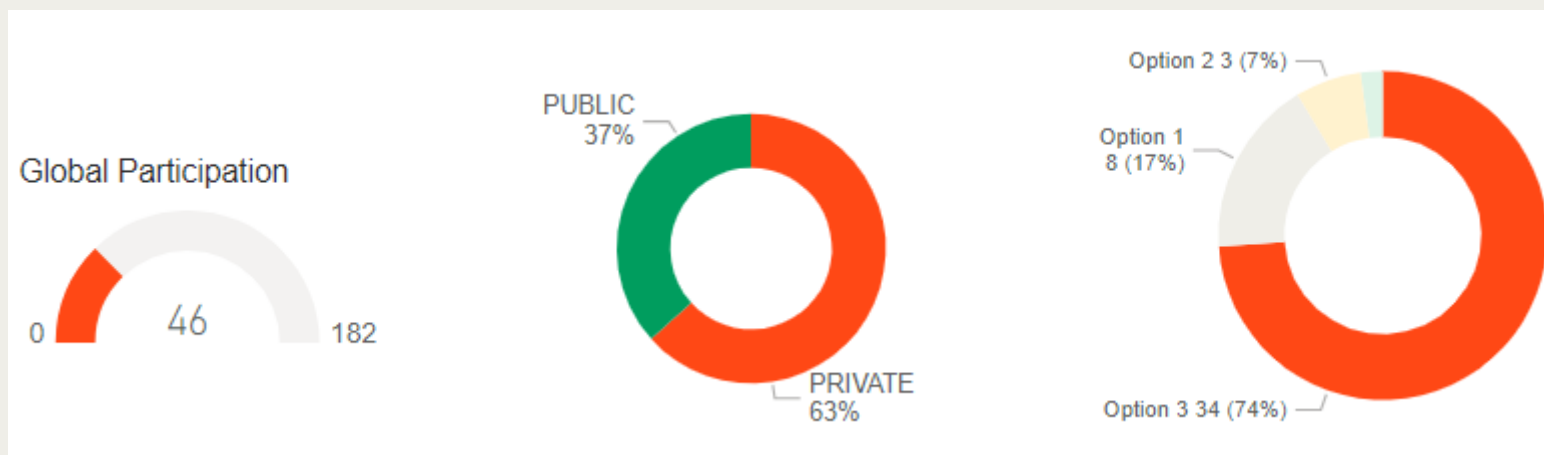
To calculate antimicrobial quantities with the **Calculation module**

Allows **online access** to complete the antimicrobial use (AMU) **questionnaire** and upload data collected offline.

Access **historical data** and generate professional outputs for **data visualisation**



8th round →



Next steps

- More participation from Members during this 9th Round of AMU Data Collection – letters have been sent in early September.
- More information on:

- Type of use
- Animal groups
- Route of administration



This can be easily achieved with ANIMUSE's Calculation Module



Long-term vision

- Provide information by animal species
- Refined animal population data with WAHIS
- Explore AMU data collection at field level



ANIMUSE

Global
Database

amu.woah.org