

# ICWE

INTERNATIONAL COALITION FOR WORKING EQUIDS



## Vet Partnerships - Case Studies

Dr Izzy Wild MRCVS – International Programme Officer  
World Horse Welfare

[isabellawild@worldhorsewelfare.org](mailto:isabellawild@worldhorsewelfare.org)

# World Horse Welfare partner projects

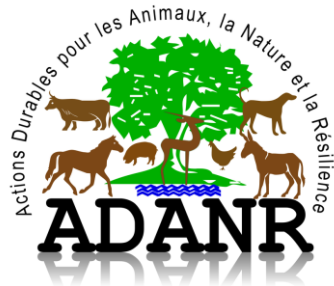
- Our international work aims to alleviate the suffering of working equids and improve human livelihoods by sharing skills and knowledge with horse owning communities
- Local partner organisations in sixteen countries across Latin America and the Caribbean, Africa and Asia, we currently run 14 projects within equid-owning communities



**ICWE**

INTERNATIONAL COALITION FOR WORKING EQUIDS





**VAWZ**  
Veterinarians For Animal Welfare Zimbabwe



COLABORADORES EN DESARROLLO COMUNITARIO  
EN NICARAGUA S.A  
CDC-NICSA S.A



**C.R.E.W.**  
Costa Rica Equine Welfare



Fundación  
**ARRIEROS**  
Colombia



អង្គការ ថែរក្សា និងសង្គ្រោះសេះ នៅកម្ពុជា  
**Cambodia Pony Welfare Organization**



**ICWE**  
INTERNATIONAL COALITION FOR WORKING EQUIDS

# How do the partner organisations work?

**Participatory approaches and training activities to engage owners and key stakeholders to promote good animal welfare**

- Take ownership of community problems and identify local solutions
- Training on key welfare issues through workshops
- Working in partnership with local services
- Training for local service providers: vets, paravets, farriers, saddlers
- Livelihood strengthening: credit and saving schemes, women's groups, additional income generation
- Advocacy work



**ICWE**

INTERNATIONAL COALITION FOR WORKING EQUIDS





# Case study – Cambodia Pony Welfare Organization – African Horse Sickness

Feb 2020 – case reported in Thailand

Prevention programme 100km of Sa Kaeo district.

1. Educating pony owners about AHS disease and its prevention
2. Distributing insecticide laced nets for each pony (net and insecticide purchased separately)
3. Distribute insect repellent for each pony
4. Establish a reporting line



អង្គការ ថែរក្សា និងសង្គ្រោះសេះ នៅកម្ពុជា  
*Cambodia Pony Welfare Organization*

**ICWE**

INTERNATIONAL COALITION FOR WORKING EQUIDS



# PROTECT YOUR EQUIDS FROM AFRICAN HORSE SICKNESS

## HOW MIDGES SPREAD DISEASE:



If you suspect an equid is infected with African Horse Sickness (AHS) - **HOUSE IT IMMEDIATELY** to prevent midges biting and spreading infection.

## ALWAYS:



### KEEP MIDGES OUT

Keep equids in stables from dusk until dawn and use cloth mesh to cover doors and windows.



### KEEP AWAY FROM MIDGES

Keep equids away from water where there are large numbers of midges.



### PROTECT EQUIDS FROM MIDGE BITES

Use covers and sprays to kill midges or to keep them away.



### WATCH OUT FOR INFECTED BLOOD SPILLS AND NEEDLES

Do not use needles on more than one equid.



### STOP THE MOVEMENT OF EQUIDS

Over long distances.

YOUR GOVERNMENT MAY CARRY OUT VACCINATION

## MIDGES:

- Are active at dawn and dusk, this is mostly when they bite.
- Thrive in warm, damp environments
- Travel large distances on the wind
- Breed in damp soil or pasture

**YOU MAY NEED TO CONSIDER EUTHANASIA IF YOUR EQUID IS SUFFERING – FOLLOW GOVERNMENT ADVICE.**

**ICWE**

INTERNATIONAL COALITION FOR WORKING EQUIDS



BROOKE  
AN AFTERNOON WITH THE  
DONKEYS AND CAMELS



SPANNA



THE DONKEY  
SANCTUARY



WorldHorseWelfare

# AFRICAN HORSE SICKNESS

## SIGNS TO WATCH FOR IN YOUR HORSE OR PONY

**A SERIOUS DISEASE WHICH CAN CAUSE DEATH IN HORSES AND PONIES**

African Horse Sickness (AHS) is one of the most deadly equine viruses, with some forms causing death in 90% of infected animals.

If you see any of these signs, house your horse or pony immediately. Make sure that insects cannot bite them and spread infection further.

## MOST COMMON SIGNS ARE:



### TEMPERATURE HIGHER THAN 39°C OR 102°F

Sweating may be seen



### BREATHING DIFFICULTIES AND SPASMODIC COUGHING

With widely open nostrils



### SWELLING ABOVE THE EYELIDS

And also in the face, tongue and neck



### REDDENED EYES



### FROTHY NASAL DISCHARGE

In the terminal stages

**DEATH CAN BE SUDDEN**

**YOU MAY NEED TO CONSIDER EUTHANASIA IF YOUR ANIMAL IS SUFFERING – FOLLOW GOVERNMENT ADVICE**

Contact your vet or animal health worker if your horse or pony looks sick; they can take a sample and test for this disease.

There is no specific cure, but supportive treatment should be provided. Allow the horse to rest and provide shelter to protect from biting insects.

**ICWE**

INTERNATIONAL COALITION FOR WORKING EQUIDS



BROOKE  
AN AFTERNOON WITH THE  
DONKEYS AND CAMELS



SPANNA



THE DONKEY  
SANCTUARY



WorldHorseWelfare



# Case study – Animal Nepal - Glanders

- Confirmation of presence of disease Glanders in May 2021
- Infectious, life threatening, zoonotic
- Training on Glanders through ICWE, shared experiences from Brooke India and other NGOs
- Videos, posters, brochures
- FAO training on Master of Training for Trainers (MTOT) to senior vets. Practical sessions facilitated by Animal Nepal on glanders information, equine handling, TPR, PPE



# Case study – Animal Nepal - Glanders

FAO signed a MOU with Animal Nepal to conduct a study on three areas:

1. To understand and update the national distribution of equine population
2. To assess the risk associated with the transmission of Glanders at animal-human interface in Nepal
3. To assess the financial and economic impact in the country due to Glanders.

As a result, the government of Nepal will develop different policies for glanders in Nepal, based on the results of the study by the FAO.





# Case study – Costa Rica Equine Welfare

- CREW and SENASA partnership in Chirripo region since 2015
- CREW are able to provide support and resources
- Assistance with welfare inspection, training
- Legalities, work permits, inspections, government backing
- Mutual benefits, synergy

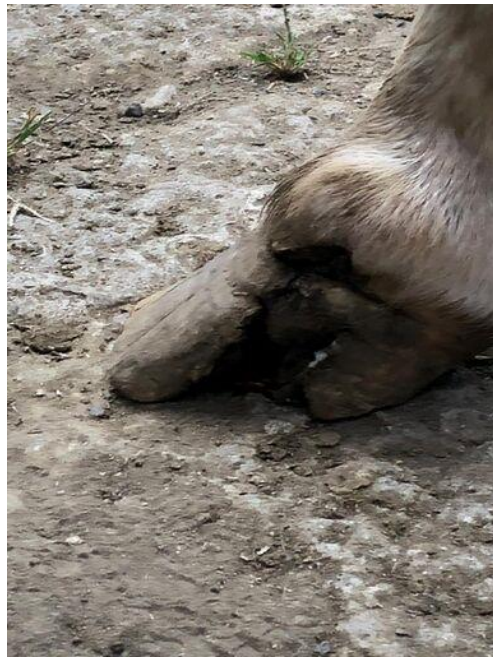
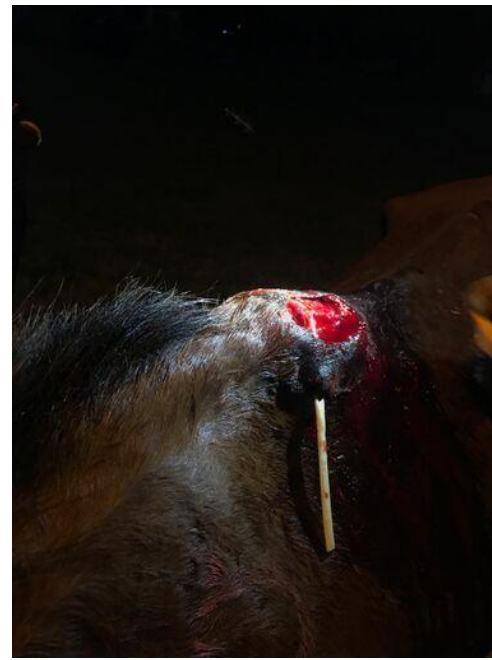


**C.R.E.W.**  
Costa Rica Equine Welfare



SERVICIO NACIONAL DE SALUD ANIMAL  
COSTA RICA





**C.R.E.W.**  
Costa Rica Equine Welfare

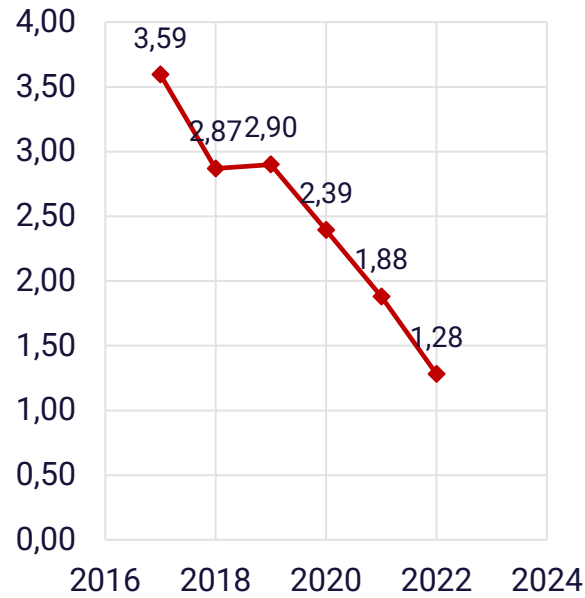
**ICWE**  
INTERNATIONAL COALITION FOR WORKING EQUIDS



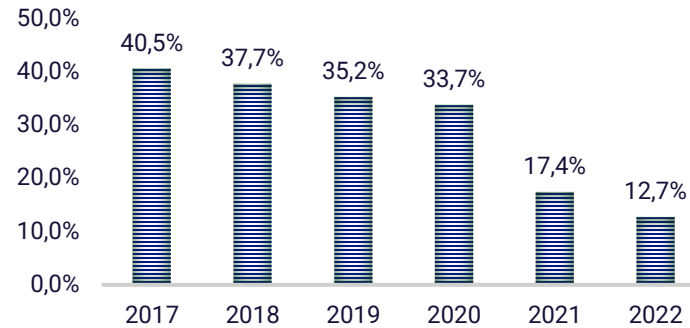


# Case study – Costa Rica Equine Welfare

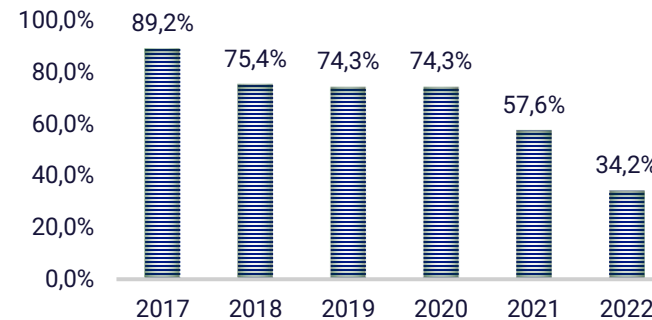
**AVERAGE # OF INJURIES**



**GIRTH INJURIES**



**SADDLE INJURIES**



**C.R.E.W.**  
Costa Rica Equine Welfare



**ICWE**  
INTERNATIONAL COALITION FOR WORKING EQUIDS





# Thank you for listening!



Thanks to:  
Hari Joshi, Animal Nepal  
Rinda Nop and Porleng Van, Cambodia Pony Welfare Organization  
Lisa Ortuno, Costa Rica Equine Welfare  
For their contributions towards this presentation