



Vlaanderen
is diervriendelijk

Establishing a register of dog breeders and control of movement of dogs

Elke Vleugels
Animal Welfare Unit
Flanders

DEPARTEMENT
OMGEVING



	Belgium	Serbia	Romania
Inhabitants	11,2 million	8,7 million	19,6 million
Surface	30.528 km ² = 366 inh/km ²	87.480 km ² = 99 inh/km ²	230.170 km ² = 85 inh/km ²
Dogs	1,3 million = 1 dog / 9 inh = 42 dogs / km ²	?	4,1 million = 1 dog / 5 inh = 18 dogs / 1 km ²

DO
AN

Dog trade in Belgium

- ▶ 161.358 new **registered** dogs in Belgium each year (DOGID)
 - 21.992 imported from foreign countries (TRACES)
- ▶ ± 15.000 dogs end up in shelters each year



= 9,3 %

Legislative measures to limit numbers of dogs and cats in shelters

- Ban on sale of dogs and cats on markets (1996)
- **Mandatory licence for breeders and traders (1997) (2007)**
- Ban on publicity for dogs and cats
- Mandatory identification and registration of dogs (1998) (DOGID)
- European Passport for all dogs (2004)
- Ban on sale of dogs and cats in petshops (2009)
- Obligatory spay/neuter and identification/registration cats (2016/2018)



Control of movement of dogs



TRACES



Belgium:

Animal Health → federal government



Animal welfare → regional government

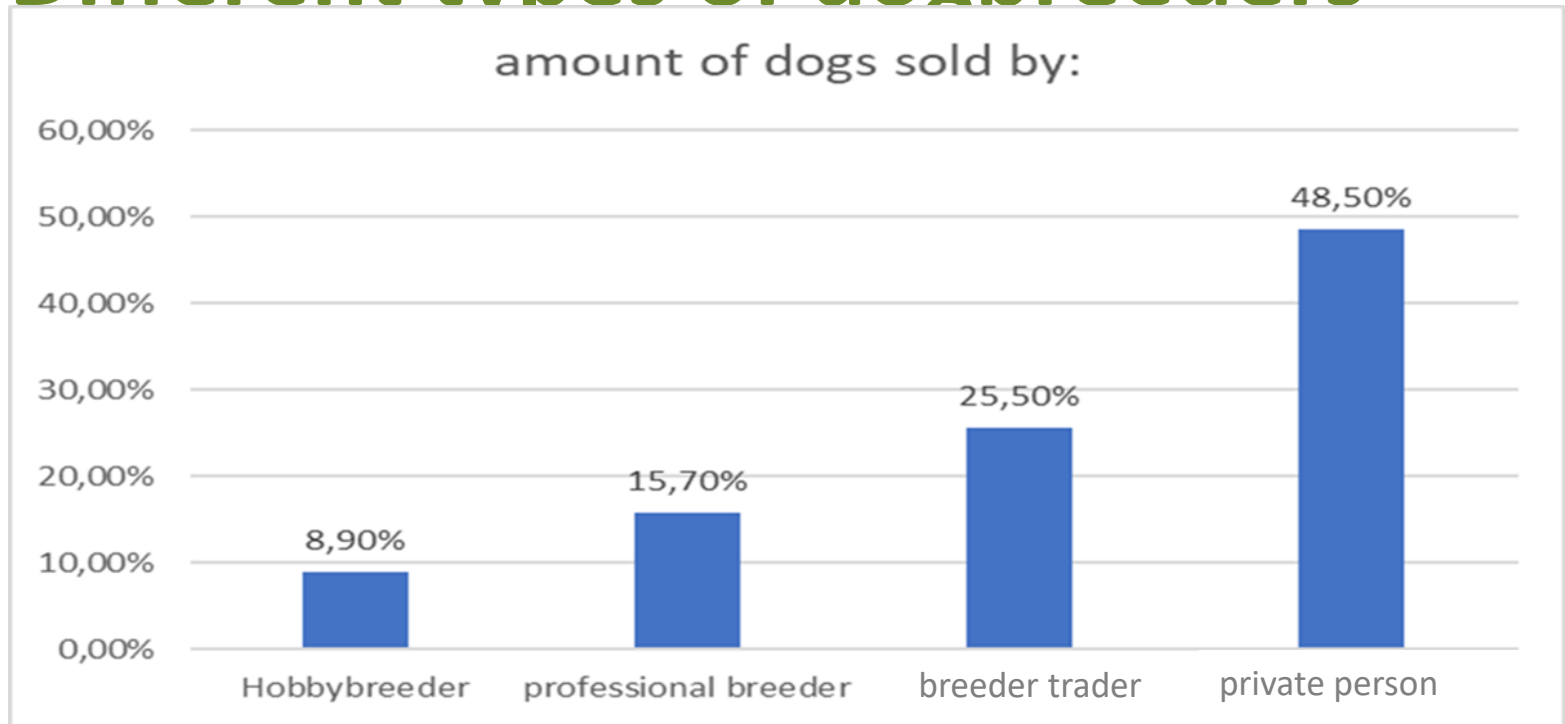


DOGID



Vlaanderen
is diervriendelijk

Different types of dogbreeders



- **Animalshelters**
- **Boarding kennels**
- **Petshops (NO dog/cats)**



How to get a license?



1) Fill in application form

- contract with veterinarian
- description of housing

2) Pay administration fee (€75 - €250)

3) Visit from animal welfare inspection service (= veterinarians)

- inspection of housing (minimum standards)
- inspection of administration
 - Registers (inventory, breeding register,...)
 - Warranty certificate
 - List with questions appropriate ownership

Standards for housing, care, staff, socialization,...

1^o Accommodation:

Animals have been bred in pens in compliance with the following standards. The requirement for natural light with an alternation of day and night has been met at all times, also when the establishment is closed.

I. MINIMUM AREAS (in m²) FOR DOGS (1)

Number of dogs	Height at the withers					
	Less than 25 cm	Less than 30 cm	Less than 40 cm	Less than 60 cm	Less than 75 cm	More than 75 cm
1	1	1,5	2	3	5	7
2	1,5	2	2,5	4	7	10
3	2	2,5	3	6	10	12
4	2,5	3	4	8	12	18
5	3	4	5	12	20	24
6	4	5	6	18	25	40
7	5	6	7	25	42	50
8	6	8	12	30	50	65
9	8	10	15	34	60	80
10	10	12	20	38	70	95

(1) If dogs of different sizes are kept together, the height at the withers of the largest dog is taken into account in calculating the minimum area.

II. MINIMUM AREAS FOR WHELPING PENS FOR THE DOG AND ITS PUPS UNTIL THESE ARE 7 WEEKS OLD:

Height at the withers of the mother					
Less than 25 cm	Less than 35 cm	Less than 40 cm	Less than 60 cm	Less than 75 cm	More than 75 cm
1 m ²	1,5 m ²	2 m ²	3 m ²	3,5 m ²	5 m ²

III. MINIMUM AREAS FOR WHELPING PENS FOR THE DOG AND ITS PUPS UNTIL THESE ARE 10 WEEKS OLD:

Height at withers of the mother					
Less than 25 cm	Less than 35 cm	Less than 40 cm	Less than 60 cm	Less than 75 cm	More than 75 cm
1,5 m ²	3 m ²	4 m ²	6 m ²	7 m ²	10 m ²

- ▶ **Animals are checked at least twice a day.**
- ▶ **Females do not give birth more than twice a year.**
- ▶ **Care to animals is provided by competent and sufficient staff. Special attention is paid to animal socialization.**
- ▶ **Females in terminal gestation or with nursing young are given suitable nesting material.**
- ▶ **Pups have access to manipulable objects to enrich their environment.**
- ▶ ...





www.alamy.com - BMR84M

Prohibition on crossbreeds

→ Too many mixed breeds in shelters

But now:

- Fashion-trends in dogbreeds (staffords, husky, chihuahua,...)
- Severe genetic disorders in purebred dogs



Vlaanderen
is diervriendelijk

Foreign breeders

Extensive rules for domestic breeders = extensive rules for foreign breeders

= Breeder-merchantse can only sell puppies from foreign breeders with license

= Same standards apply for foreign breeders

→ local veterinary authority checks and confirms these standards



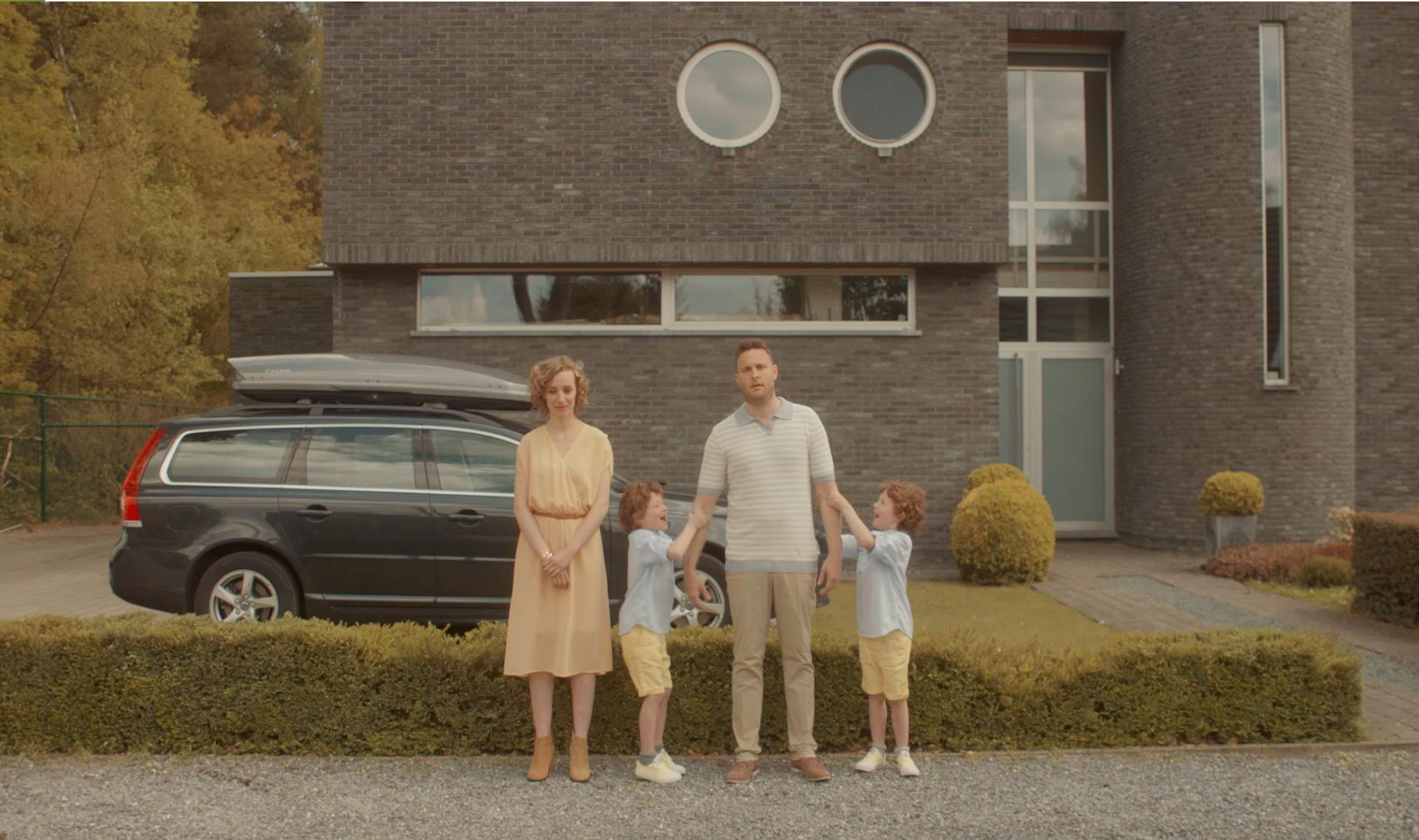
Animal welfare inspection Service

- = “animal welfare police”
 - 13 inspectors/veterinarians
 - 7 control officer/ animal caretakers
- **Unannounced inspections**
- **Inspections after complains**

year	complains	controls	confiscations
2017	317 = 17,3%	158	1021

- **Sanctions**
 - **Fine of at least €640!!**
 - **License withdrawel**
 - **Confiscation of the animals**

Raising public awareness



Due to sensitising the people of Belgium are

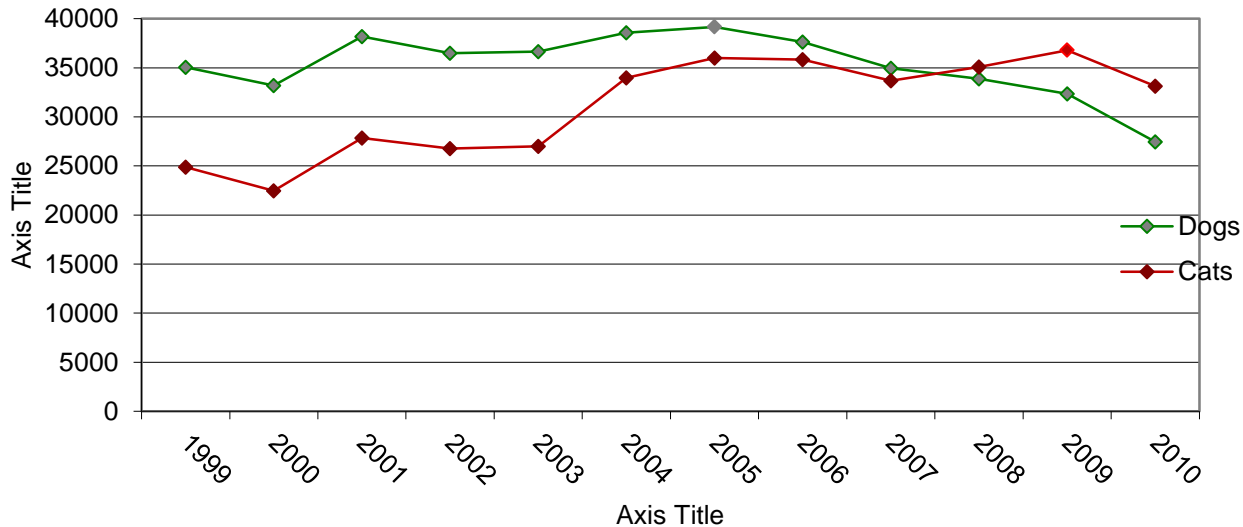
used to see this



Not used to see this



Result: Number of dogs and cats in shelters



Amount of homeless dogs is **decreasing**

Amount of homeless cats is **not decreasing**



=

spay and neuter regulation



Vlaanderen
is diervriendelijk

Spay/neuter Cats

- Obligatory identification & registration
- Obligatory spaying/neuter every cat!
 - Except cats from breeders
- Obligatory neuterprogramme for local authorities
- Raising public awareness



Is jouw Minoes
ook een wulpse
poes?

Sinds 1 april 2018 is
sterilisatie verplicht

Jaarlijks belanden meer dan 20.000 katten in een asiel

Future

- Currently renewing the legislation on the registration of breeders
- Optimizing animal welfare with:



- Obligatory grouphousing
- Obligatory Outdoor space
- Socialisation
- No more ban on crossbreds
- ...

Questions?

