

# Guiding documents; Animal welfare during transport

3rd meeting of WOAHP Regional Network of National Contact Points on long-distance transportation in Europe

---

Leopoldo Stuardo

21<sup>th</sup> of June 2023

Scientific Coordinator-Animal Welfare  
Standards Department



World  
Organisation  
for Animal  
Health

Organisation  
mondiale  
de la santé  
animale

Organización  
Mundial  
de Sanidad  
Animal



- To support the implementation of the WOAH Chapter on animal transport
- To be adapted (model) to the national or regional context.
- Two documents:
  - Emergency plan Model (land and sea transport)
  - Check lists (Land and sea transport)



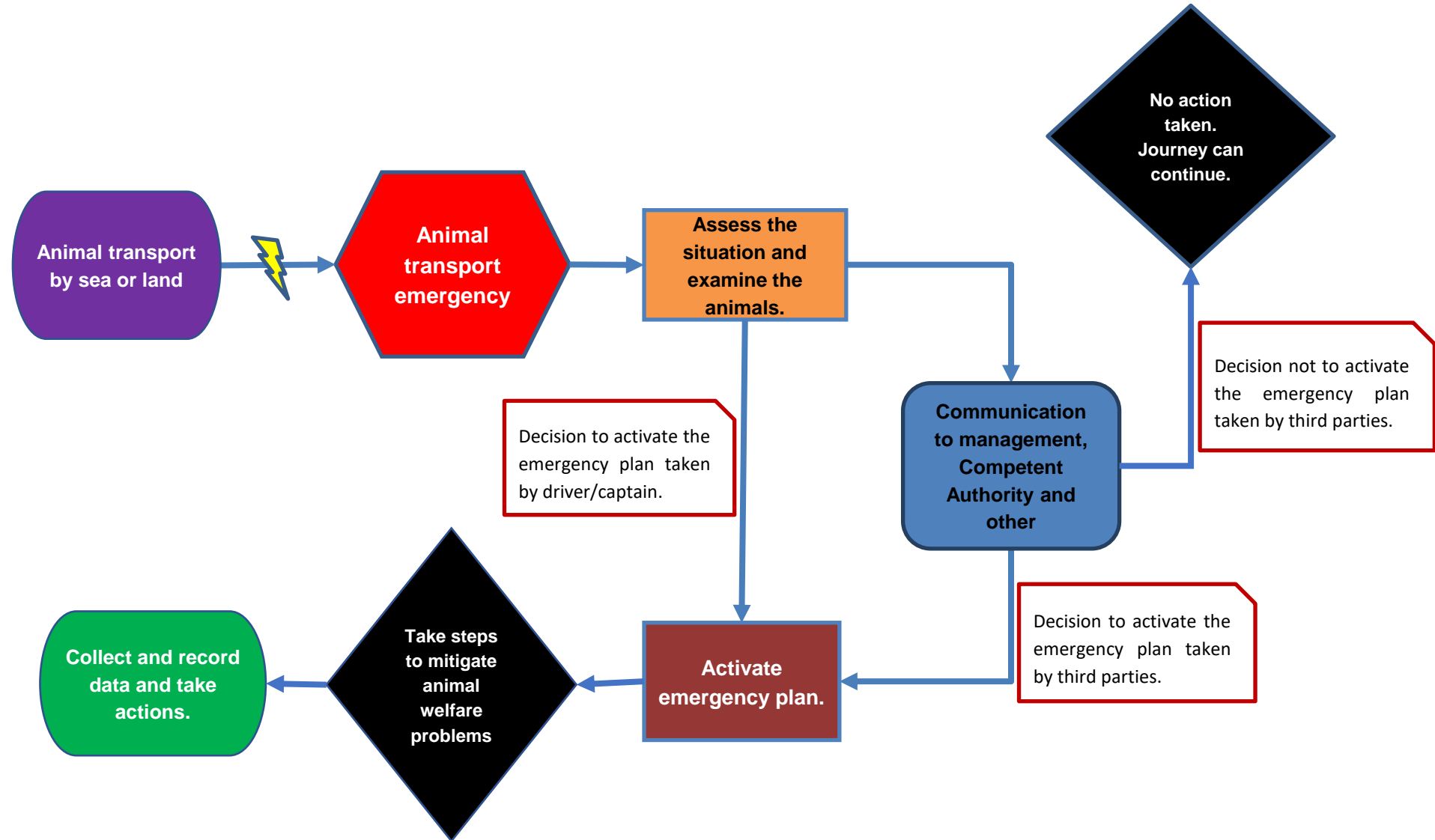
## WHY?

When an unforeseen occurrence, such as an accident, malfunction of the truck/vessel, the closure of a road or the rejection of a consignment due to sanitary reasons occurs, a clear emergency plan should be part of the documentation accompanying the transport of animals.





# EMERGENCY PLAN MODEL





## Purpose of the checklist

To complement the WOAHA standards and does not replace the recommendations provided in the Terrestrial Code. It aims to provide guidance as to what actions to consider when planning transport for animals.

## Scope

The checklist applies to the following live domesticated and free-moving animals: cattle, buffaloes, camels, sheep, goats, pigs, and equines as well as animals travelling in containers: poultry and rabbits. The checklist can also be applicable to some other animals, e.g., deer, camelids, and ratites.

Arrangements should be foreseen to collect information at the destination regarding some key data, such as weight on arrival or mortalities.

.



## Objective

To provide a list of items for checking by different actors to ensure that animal welfare is protected throughout the full journey/transport of the animal.

All animal transport stakeholders, including farmers, business operators, transporters, veterinary services, and competent authorities, as well as any other relevant participant in the transport operations

## Target audience

All animal transport stakeholders, including farmers, business operators, transporters, veterinary services, and competent authorities, as well as any other relevant participant in the transport operations.

# Thank you

# Gracias

# Merci beaucoup

---

12, rue de Prony, 75017 Paris, France  
T. +33 (0)1 44 15 19 49  
F. +33 (0)1 42 67 09 87

woah@woah.org  
www.woah.org

[Facebook](#)  
[Twitter](#)  
[Instagram](#)  
[LinkedIn](#)  
[YouTube](#)  
[Flickr](#)

## ACKNOWLEDGMENTS:

- Nikki Kells
- Tamara Tadich
- Lena Tuominen
- Lotta Berg



World  
Organisation  
for Animal  
Health

Organisation  
mondiale  
de la santé  
animale

Organización  
Mundial  
de Sanidad  
Animal