

# **Animal welfare during long distance transport of animals – latest developments from a business operators' perspective**

Hans-Peter Schons,  
ExPla chairman

3rd meeting of the WOAH National  
Contact Points on long-distance  
transportation for Europe

20 – 22 June 2023 in Dublin

# Introductory remarks (I)

- “A series of severe and mutually reinforcing shocks - the COVID-19 pandemic, the war in Ukraine and resulting food and energy crises, surging inflation, debt tightening, as well as the climate emergency - battered the world economy in 2022. Gloomy and uncertain economic outlook for both developed and developing economies” (UNCTAD)
- -> we share this place together, global problems require global solutions!
- mobilize all efforts, globally, and make use of comparative advantages
- open agricultural trade is part of the solution, not the problem (especially for the Global South)

# Introductory remarks (II)

- Breed societies and breeding companies are developing breeding programmes that more and more include sustainability criteria (i. e. less focus on performance and more on ecological and social aspects as well as on animal health and animal welfare)
- They are not selling a single product, but different solutions for many specific situations
- Sustainable animal breeding involves selecting the best animals for a specific purpose
- Genetic progress needs a lot of time and should be made available also to those, who cannot afford expensive breeding programmes
- EU breeding livestock has a high animal health status

## Livestock trade is an important sector in the EU

- in 2022, almost **5,2 mln head** of cattle were traded in the EU-27
  - thereof 4,2 mln (80 %) within the Member States
  - and around 950.000 to Third countries (slightly decreasing compared to the previous years)
    - thereof other cattle (fattening) 550.000 (+ 12%), slaughter cattle 217.000 (- 19 %) and breeding cattle 179.000 (minus 17%)  
[figures for calendar year 2022]
- Total trade value was **more than 4 bln Euro**, of which  $\frac{3}{4}$  were intra-EU and 1,1 bln in exports to Third countries
  - major destinations: Israel, Algeria, Lebanon and Turkiye

## Exchange of bovine genetics

- in 2022, some **550.000 head of pure-bred breeding cattle** were traded in the EU-27
  - thereof 370.000 within the Member States
  - and around 180.000 to Third countries (down 17 % compared to 2021, which was in turn almost 1/3 lower than 2020!)
  - Exports of breeding livestock account for 11 % of total EU cattle trade
- the value of breeding cattle export was, however, quite stable at **672 mln EUR**, divided half /half between EU MS and Third countries

# Trade matrix

- based on quantity, calendar year 2022, Third country trade only
- Main Member States of origin:
  - all categories combined: Portugal, Romania, Spain, France, Croatia, Ireland (Eire)
  - breeding cattle: France, Ireland, Hungary, Poland, Germany
  - slaughter cattle: Spain, Croatia, Ireland, Hungary, Slovenia, Romania
  - other cattle: Portugal, Romania, France, Spain, Croatia
- Main TC destinations:
  - all categories combined: Israel, Algeria, UK, Lebanon, Turkiye, Kosovo, Egypt (=“neighbouring countries”)
  - breeding cattle: UK, Algeria, Russia, Turkiye, Egypt
  - slaughter cattle: Lebanon, Kosovo, Libya, UK
  - other cattle: Israel, Algeria, Turkiye, Egypt and Albania

# Live animal exports – legislative framework

- International standards (WOAH)
  - notably chapters 7.2, 7.3 and 7.4 of the TAHC
- within the EU
  - Regulation 1/2005
  - Implementing Regulation 2023/372 (records of official controls performed on livestock vessels, contingency plans)
  - Delegated Regulation 2023/842 (performance of official controls, livestock vessels)
- national legislation
  - including handbooks and guidelines (non-legislative)

## **Our demands** (back in 2018, still valid!):

- set appropriate standards for animal transport
  - no „one size fits all”-approach, take into account specific needs of different categories of animals, e. g. male / female or young / old
  - clear and easy to implement
- eliminate conflicting rules in relevant laws
- better controls and enforcement of AW standards (*cooperation and coordination between competent authorities in EU and TC*)
- support further research on animal welfare during transport and dissemination of results



## What should be avoided:

- Export bans
- blacklisting of Third countries (“negative lists”)
- self-sufficiency efforts, where they are not appropriate or inefficient
- excessive demands going beyond the scope of the transport regulation (and which therefore cannot be regulated there)
  - e. g. slaughtering conditions, religiously motivated arguments  
(these issues may need to be considered, but then elsewhere)

## Looking for solutions ...

- Exporters of Bovine Genetics are well aware of the problems and shortcomings
- looking for practicable solutions
- Make use of “digital revolution”
- Projects to establish databases and/or software systems for retrospective checks and better planning and monitoring
  - individual companies and/or national umbrella organisations

# Digital solutions for animal transport - some examples:



## Animal Welfare Standard Transport (TWS-T)

German Livestock Association  
Bundesverband Rind und Schwein e.V. (BRS)  
Adenauerallee 174  
53113 Bonn  
info@rind-schwein.de

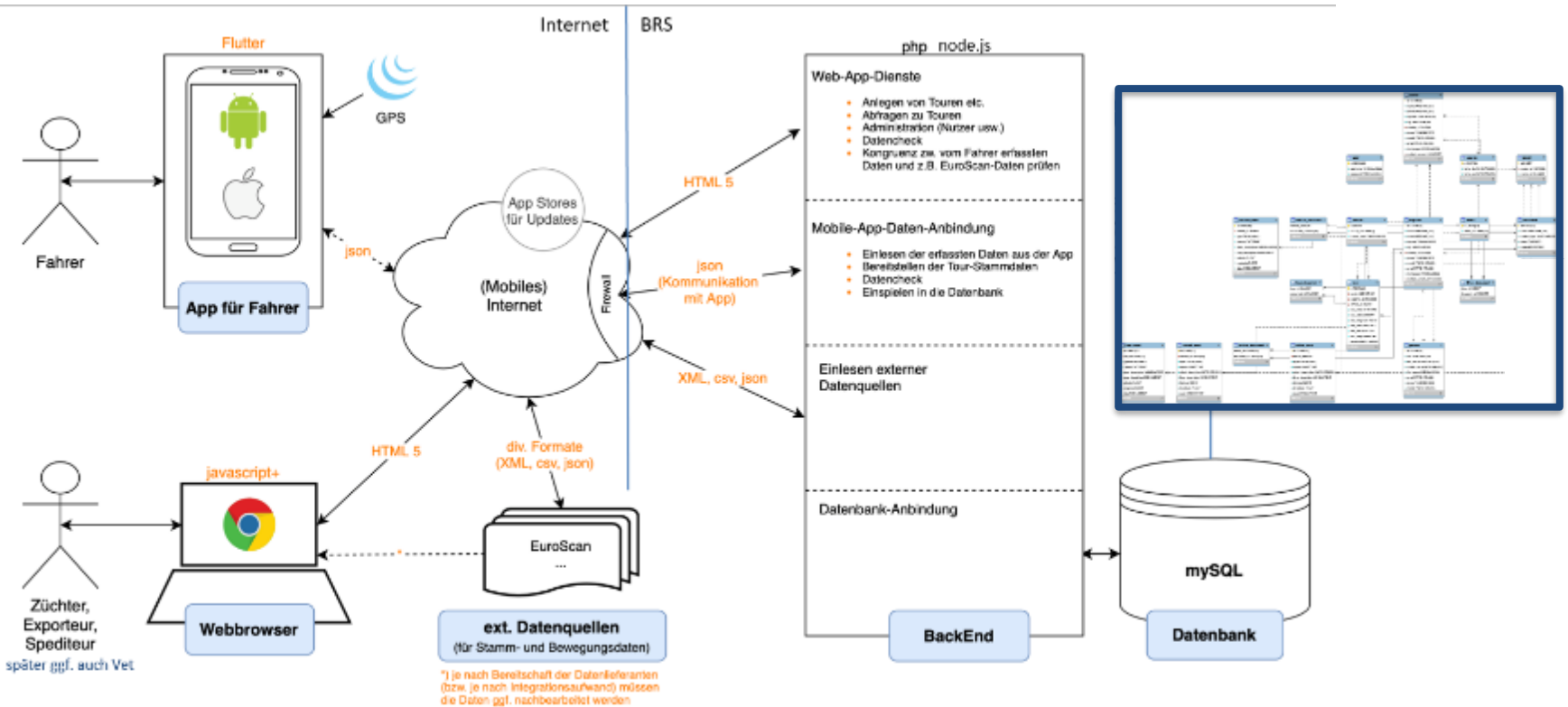


# Objectives

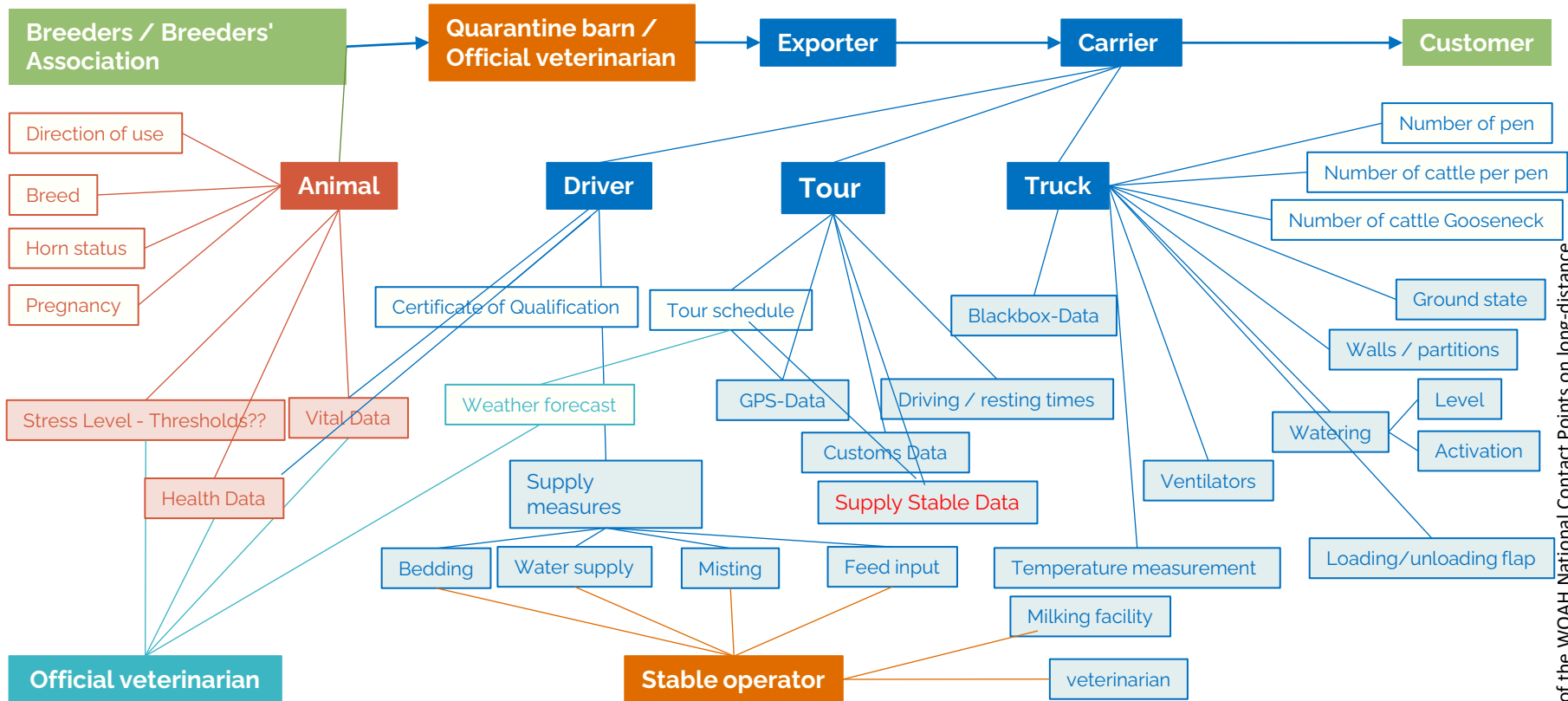
- improve **compliance** with animal welfare provisions (*notably with EU regulation 1/2005, but can be adapted*)
- Improve **reliability** transport data (covering four “pillars”: animal, truck, route and stables)
- Improve **transparency** for planning and carrying out of long-distance transports of breeding cattle
- documentation of the journey by the driver in a smartphone app:
  - departure checklist: transporter equipment works, bedding, feed, condition of the animals, ...
  - Breaks / rest periods: observed, fed/watered, unloaded
  - if applicable, deviations from transport plan
  - arrival: condition of the animals
- continuous (or discontinuous) transfer of planned and actual data into a tamper-proof database
- processing a report for each journey
- evaluation of the journeys



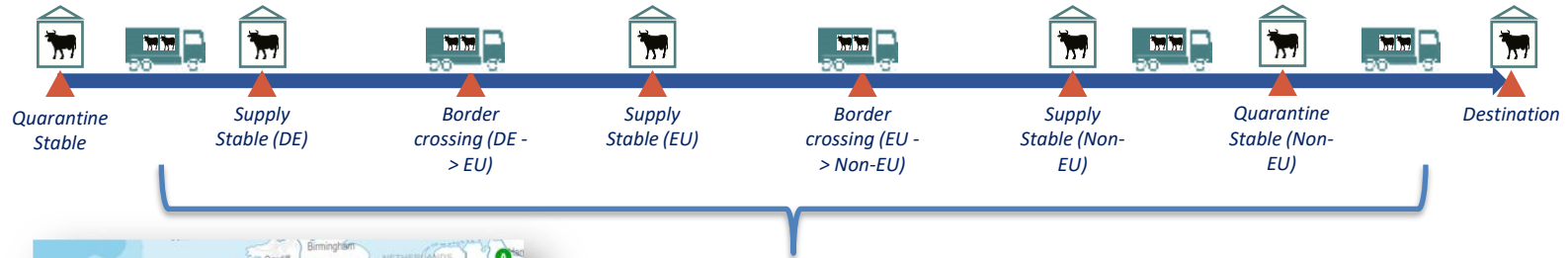
# Status quo – technology stack TWS-T



# Data: Domain Object Model



# Standard criteria (example for "route")

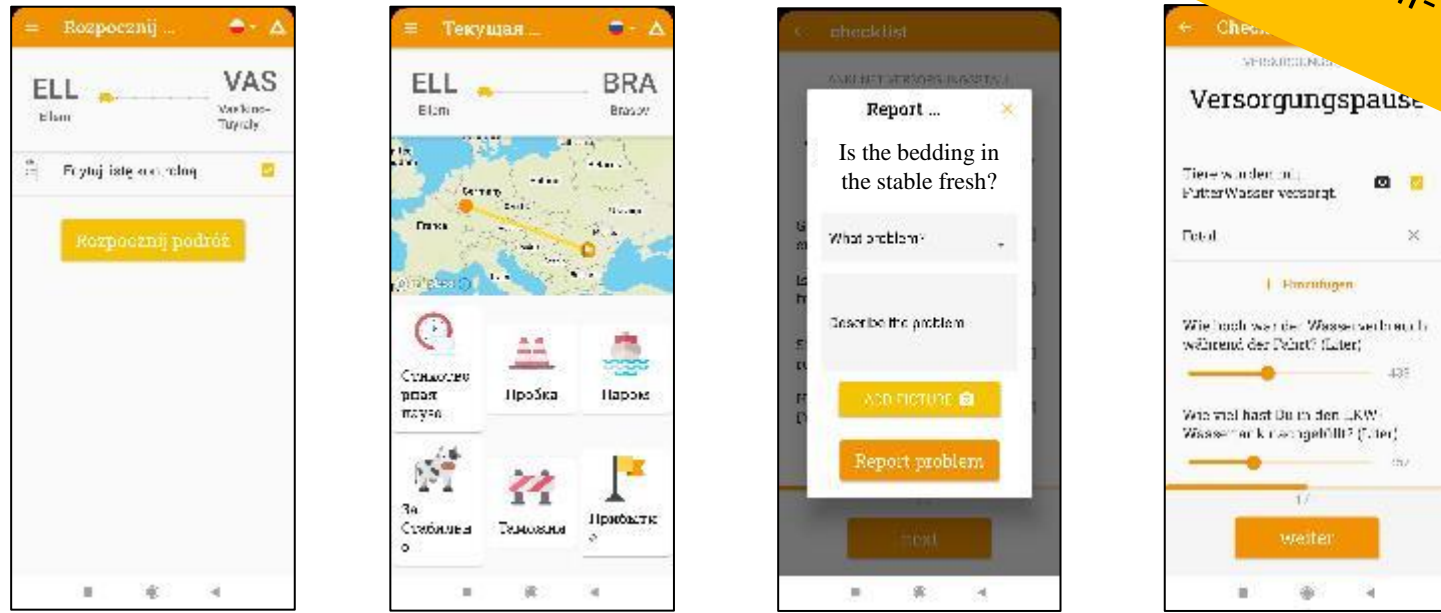


## Transport route:

- Supply breaks with at least 1 hour
- Supply breaks with 24 hours
- Routing
- Transport duration
- Temperature profile
- Unloading (number of cattle)

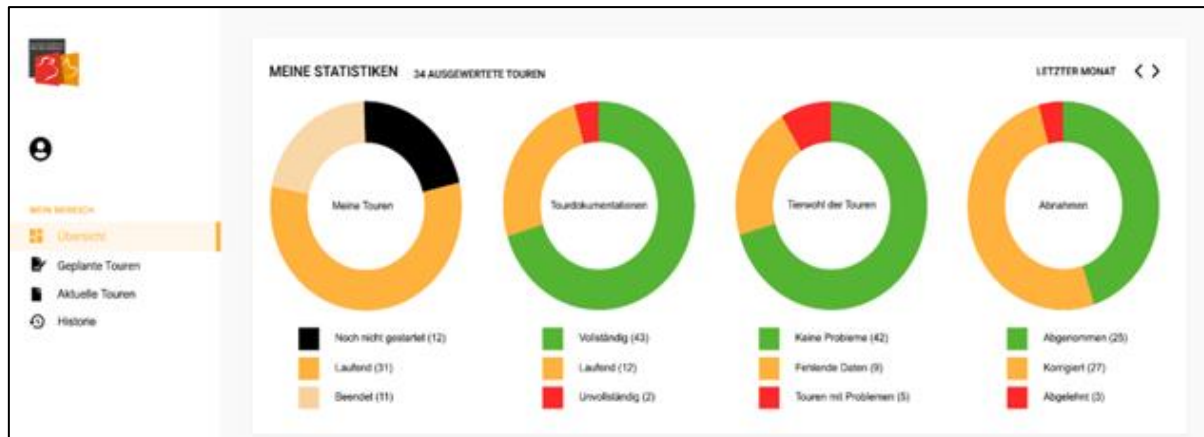
# The APP

multilingual and self-explanatory





# Overview, analysis of data:



**BEVORSTEHENDE ABNAHMETERMINE**

Diese fertig geplanten Touren stehen als nächstes an. Sehen Sie hier wann Ihre Abnahmetermine stattfinden.

Sammelstall	Transporteur
Sammelstall Smit Sommerweg 22 12245 Teeten	Reggie Transport GmbH Musterstr. 35-37 54001 Heumen

**Deliveries**

Transporteur	Wagen	Status
Transporteur 1	Wagen 1	🔴
Transporteur 2	Wagen 2	🔴
Transporteur 3	Wagen 3	🔴
Transporteur 4	Wagen 4	🔴

**Frucht & Offenmarktlänge**

10.06.2022 17:45 Uhr **START** ✔ Meesingen

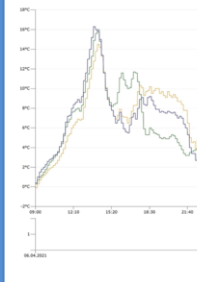
10.06.2022 22:35 Uhr	<b>STOP</b> Futterstopp <span style="color: green;">✔</span>	Dijon / Frankreich	<span style="color: orange;">📍</span> Details
<b>CHECKLISTE</b> <input checked="" type="checkbox"/> Versorgungspause		<b>FOTOS</b>    	
11.06.2022 06:30 Uhr	<b>WEITER</b> <span style="color: green;">✔</span>		<span style="color: orange;">📍</span> Details
11.06.2022 12:15 Uhr	<b>STOP</b> Futterstall <span style="color: green;">✔</span>	Sebe / Frankreich	<span style="color: orange;">📍</span> Details
11.06.2022 14:45 Uhr	<b>WEITER</b> <span style="color: orange;">⚠</span>		<span style="color: orange;">📍</span> Details
<b>CHECKLISTE</b> <input checked="" type="checkbox"/> Versorgungspause <input checked="" type="checkbox"/> Tierwohl <input checked="" type="checkbox"/> Technik 1		<b>FOTOS</b>   	

Meeting of the WOA National Contact Points on long-distance transportation in Europe, 20 June 2023, Dublin

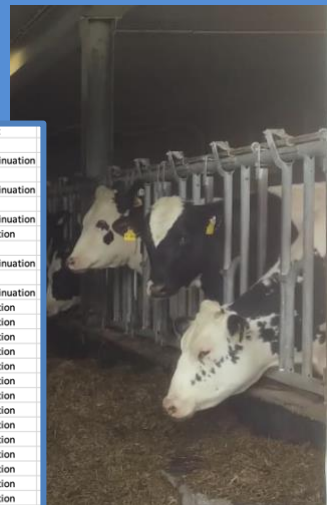
# Reports

## Fahrt CMR#DE11500232xxx

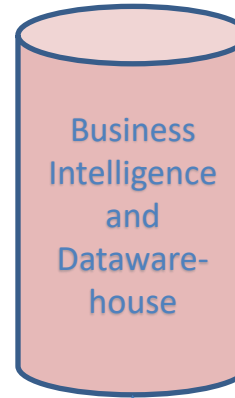
Konto: Hefler      Betrieb: Daxenbercht  
 Fahrzeug: SUH 3070      Erreicht am: 13.04.2021 13:27  
 INR: 11404139      Auswahl: 06.04.2021 09:00 - 07.04.2021 23:00  
 Kommentar: SUH 3070 (2)  
 All times are in DST of (UTC+01:00) Amsterdam, Berlin, Bonn, Rome, Stockholm, Vienna.



2021-04-06T16:20:11.396093	12.7127577	52.3652496	start
2021-04-06T16:20:26.913347	12.7127573	52.3652491	stop
2021-04-06T16:20:36.037459	12.7127573	52.3652503	continuation
2021-04-06T16:21:24.648748	12.7132512	52.3656275	stop
2021-04-06T16:21:29.143257	12.7132512	52.3656275	continuation
2021-04-06T16:22:10.795761	12.7127571	52.36525	stop
2021-04-06T16:24:43.953916	12.7130215	52.3656246	continuation
2021-04-06T16:25:13.583482	12.7130215	52.3656246	location
2021-04-06T16:25:41.499386	12.7127574	52.3652503	stop
2021-04-06T16:26:28.217908	12.7127571	52.36525	continuation
2021-04-06T16:27:09.428269	12.7127577	52.3652499	stop
2021-04-06T16:27:37.048452	12.7127573	52.3652503	continuation
2021-04-06T16:27:27.768508	12.7425093	52.3640679	location
2021-04-06T17:22:28.332720	12.7650625	52.3485485	location
2021-04-06T17:32:27.604189	12.8062776	52.3351382	location
2021-04-06T17:37:27.405304	12.834571	52.3922209	location
2021-04-06T17:42:26.317705	12.9047766	52.4236081	location
2021-04-06T17:47:27.703299	12.9524937	52.4727334	location
2021-04-06T17:52:28.473094	12.9661591	52.5356675	location
2021-04-06T18:02:27.605826	12.9990762	52.6537108	location
2021-04-06T18:07:27.891208	13.0293541	52.7098178	location
2021-04-06T18:12:27.766553	13.1673354	52.7048856	location
2021-04-06T18:17:28.326969	13.2563853	52.6995705	location
2021-04-06T18:22:26.333420	13.3087951	52.6936062	location
2021-04-06T18:27:27.438191	13.3984285	52.6714408	location
2021-04-06T18:32:26.342504	13.4465401	52.6478755	location
2021-04-06T18:37:27.354464	13.5646271	52.6369172	location
2021-04-06T18:42:28.003861	13.4175674	52.6508122	location
2021-04-06T18:43:37.647017	13.5577895	52.6778759	stop
2021-04-06T18:44:43.881525	13.5531631	52.6973668	continuation
2021-04-06T18:47:27.131119	13.5413472	52.741872	location
2021-04-06T19:35:23.023977	14.0615997	53.2765326	location
2021-04-06T19:46:55.002169	14.315241	53.3220337	location
2021-04-06T19:53:17.019038	14.4373006	53.3280344	location



Sensors,  
Path and time,  
Animal welfare  
checklists,  
Pictures on the road



+ external data  
sources  
(Traces, Euroscan, ...)



- Documentation of the journeys
- Complete proof of the quality of care
- Demonstrating and managing quality and potential

## Animal Welfare Standard Transport (TWS-T)

- can be used on various transport routes ...
  - within a member state
  - between member states
  - between member state and third country
- ... for different animal species and different purposes
  - cattle, pigs, sheep, goat
  - breeding animals, slaughter animals
- can be used by
  - exporters
  - organisers
  - transporters

## Animal transport – examples (cont.)

- The Netherlands: Vee& Logistiek Nederland is developing an operational plan for the use of staging points in non-EU countries for the export of breeding and production livestock
  - the objective is to develop a system, which guarantees that staging points outside the EU comply with EU requirements
  - physical inspections and regular audits (every year)
  - Reservation confirmations
  - Real-time GPS tracking (online)

## **b) Animal transport – examples (cont.)**

- Many operators are applying private standards, which are stricter than the (minimum) AW requirements of the EU
  - DK: breeding pigs
  - DK: breeding heifers
  - IRL: export of calves (based on Teagasc research)
  - AT: video documentations:
    - long-distance transport to Azerbaijan  
<https://www.youtube.com/watch?v=Ez8Z-f9yO3g>
    - Calves transport to Spain  
<https://www.youtube.com/watch?v=ezXTd/pkg7VA>



*RINDERZUCHT AUSTRIA shows a long-distance transporter of the company Engel with posters explaining the transport procedure in a transparent and detailed way (Wieselburg Fair from 1 - 4 June 2023)*



**THANK YOU FOR YOUR  
ATTENTION!**

**FOR QUESTIONS OR REMARKS PLEASE CONTACT:**

**EXPLA  
c/o ADT E. V.  
RUE DU LUXEMBOURG 47-51  
1050 BRUSSELS  
BELGIUM  
TEL.: +32 2 286 59 54  
EXPLA@ECLIPSO.EU**

**ExPla**  
European Platform of  
Exporters of Bovine Genetics