



# DG SANTE: Audits and other controls

3rd meeting of WOAHA regional network of National Contact Points on long-distance transportation in Europe

20-22 June 2023, Dublin, Ireland

*Angel Miguelez & Partick Caruana*  
*DG SANTE F2*

# SANTE Directorate F – Unit 2



DG Health and  
Food Safety

Health and food audits  
and analysis programme  
2023

Health and  
Food Safety

# AW of unweaned calves during long journeys



The objective of the project is to produce an overview of the welfare of unweaned calves during long journeys by road, particularly on the effectiveness, appropriateness and consistency of the official controls of the Member States to protect the welfare of calves.

- approval and use of vehicles
- national policies & actions at all stages (incl. roll-on-roll-off vessels) and transport operations
- control posts (resting points)

# AW of unweaned calves during long journeys



## AUDITS 2022

1. IT 2022-7504
  - Destination (veal) and transit
2. ES 2022-7505
  - Destination (beef)
3. IE 2022-7503
  - Departure

## AUDITS 2023

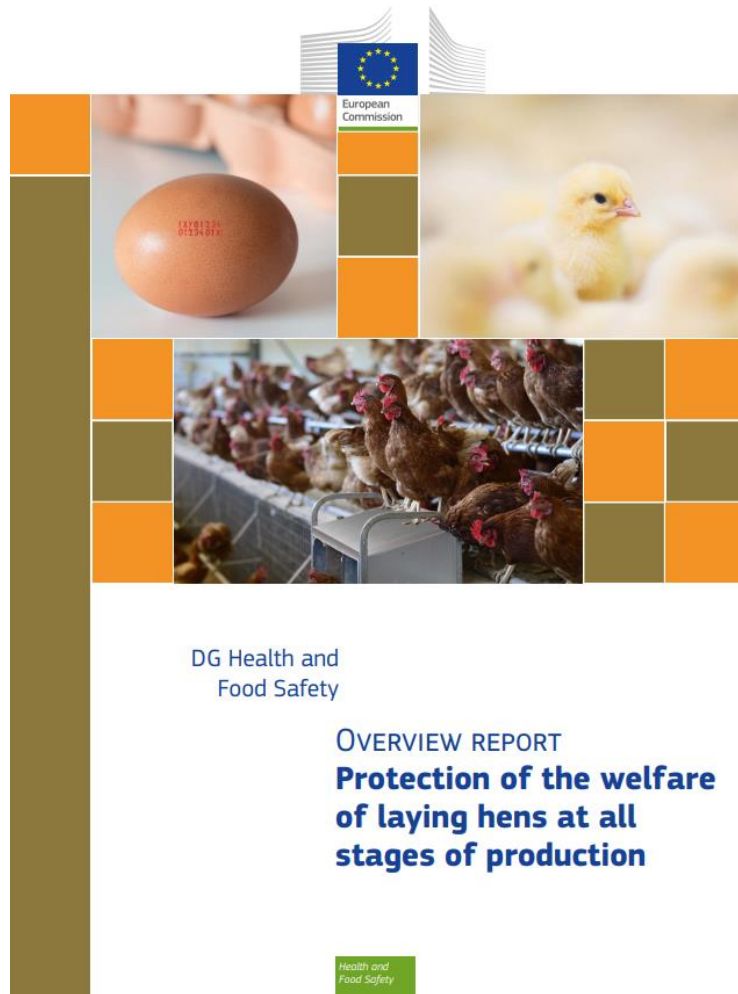
4. NL 2023-7736
  - Destination (veal)
5. FR 2023-7719
  - Departure and transit
6. PL 2023-7729
  - Departure and transit

## Overview report

# AW of unweaned calves during long journey – Identified challenges

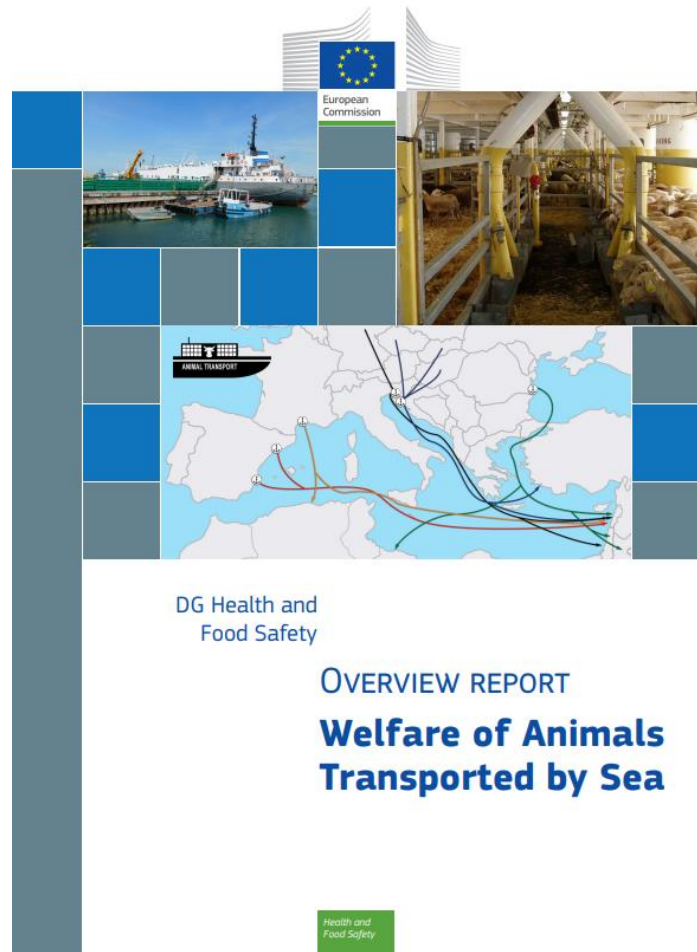
- Risk-based official controls vs vulnerable animals.
- Unweaned calves vs calves vs bovine as type of animals for vehicle approval certifications.
- Drinkers at vehicles.
- Resting stops.
- Feeding at control posts, assembly centres and vehicles.
- Assembly centres as place of destination.

# AW of laying hens



- 9 audits in 2021 (+ 17 questionnaires)
- Transport was out of scope, but ...
- End-of-lay hens
  - Vulnerable animals
  - Catching
  - Long journeys

# AW on livestock vessels



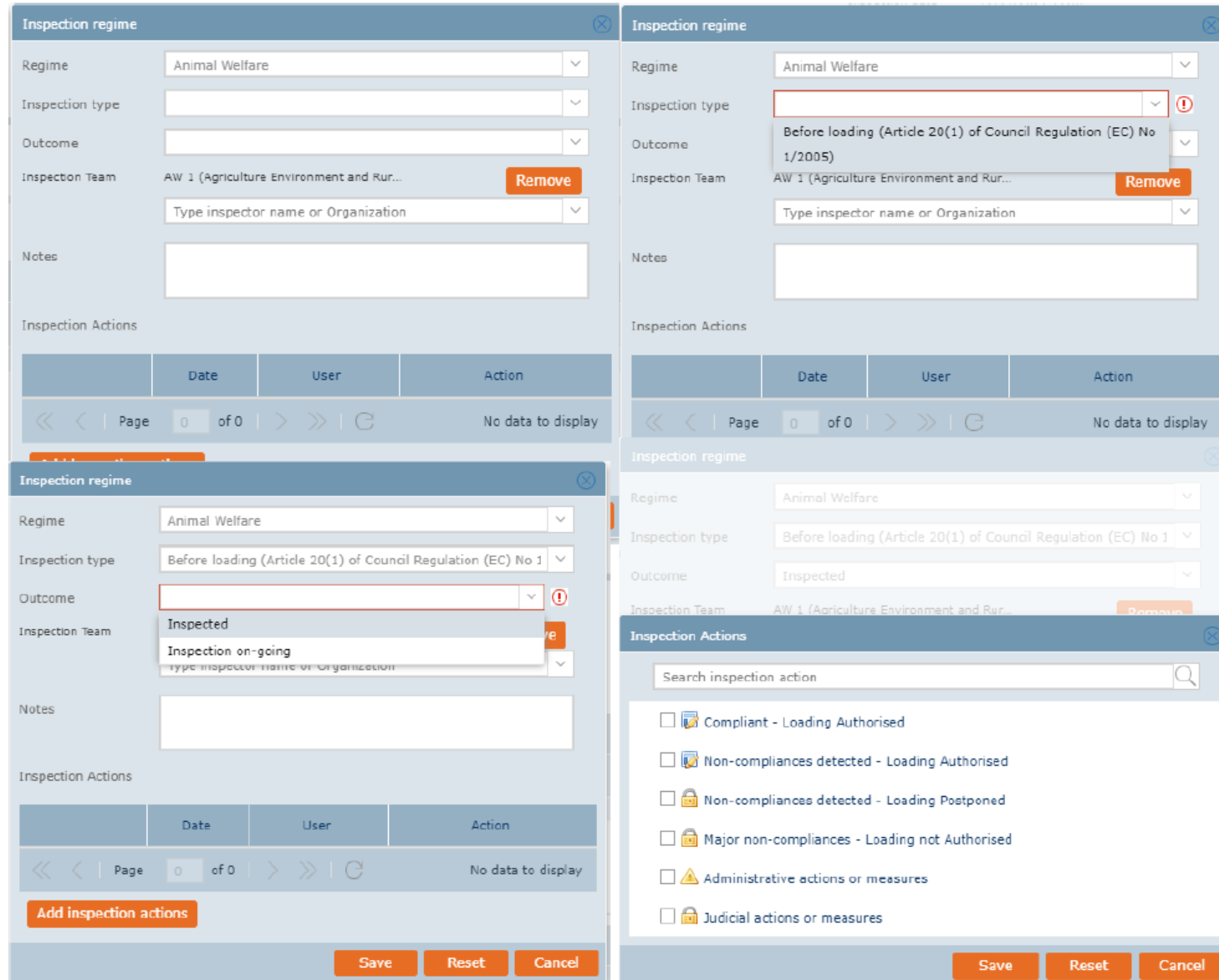
- After the overview report of 2019:
  - Audits in 2022 (PT, ES, HR, RO)
  - New Implementing and Delegated Regulations
  - Desk Exercise on Sea Transporters' contingency plans

# AW on livestock vessels - Challenges

- Progress in effectiveness of official controls prior to loading animals
- Assessment of suitability and state of maintenance of the vessels' equipment – requires expertise different from a veterinary background
- Sharing of information on previous inspections on livestock vessels
- Identifying the sea transporters
- Sea transporters' contingency plans (ownership, suitability)
- Feedback from non-EU countries of destination?



# Using Thetis to share information



Inspection regime

Regime: Animal Welfare

Inspection type: [Empty]

Outcome: [Empty]

Inspection Team: AW 1 (Agriculture Environment and Rur... [Remove]

Type inspector name or Organization: [Empty]

Notes: [Empty]

Inspection Actions

Date	User	Action
No data to display		

Page 0 of 0

Inspection regime

Regime: Animal Welfare

Inspection type: Before loading (Article 20(1) of Council Regulation (EC) No 1/2005)

Outcome: [Empty]

Inspection Team: AW 1 (Agriculture Environment and Rur... [Remove]

Type inspector name or Organization: [Empty]

Notes: [Empty]

Inspection Actions

Date	User	Action
No data to display		

Page 0 of 0

Inspection regime

Regime: Animal Welfare

Inspection type: Before loading (Article 20(1) of Council Regulation (EC) No 1/2005)

Outcome: Inspected

Inspection Team: AW 1 (Agriculture Environment and Rur... [Remove]

Type inspector name or Organization: [Empty]

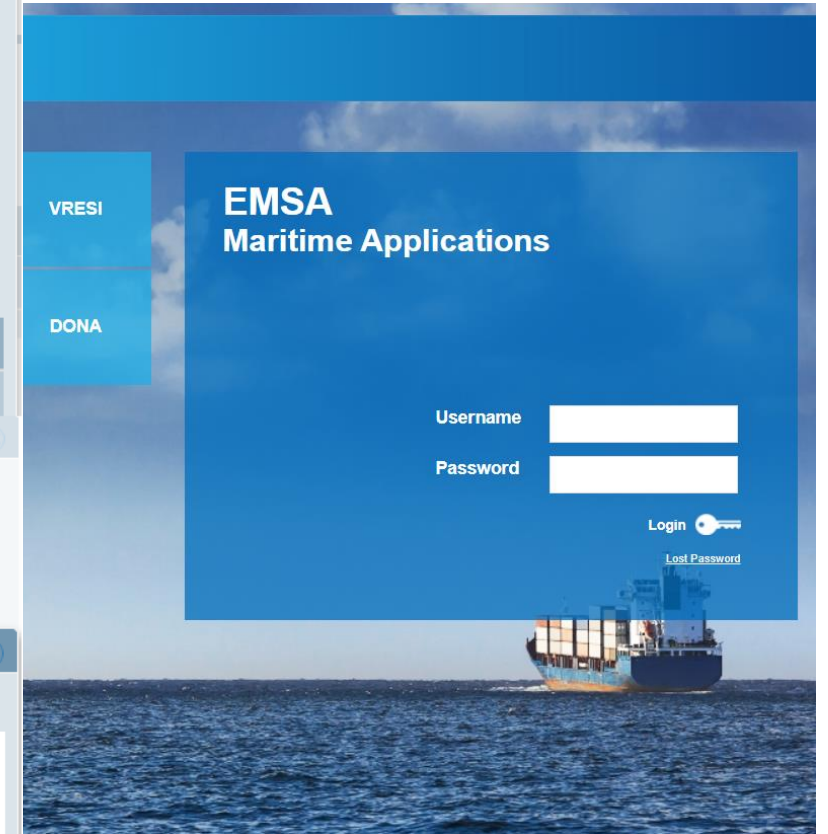
Notes: [Empty]

Inspection Actions

Search inspection action

- Compliant - Loading Authorised
- Non-compliances detected - Loading Authorised
- Non-compliances detected - Loading Postponed
- Major non-compliances - Loading not Authorised
- Administrative actions or measures
- Judicial actions or measures

Save Reset Cancel



# AW during fish farming



- Fact finding missions including transport operations.

1. DE 2023-7767
2. Norway
3. DK 2023-7766
4. EL 2023-7909

Provisional for 2024: FR, FI, ES

# AW during fish farming

This Commission project aims at gathering information on the different production systems, and management practices used for farmed species, the challenges faced by the operators and by the competent authorities, their impact in fish welfare, current or potential use of animal welfare indicators and on good practices from industry and official services in protecting farmed fish welfare.

- Transport equipment and procedures;
- Critical factors (and parameters) during fish transport;
- Animal-based and resource-based welfare indicators.

# Benefits of working with (EU) NCPs

- Common understanding of EU legal requirements
- Awareness of specific requirements in different MSs
- Create and facilitate direct exchanges with and between MSs through the NCPs, including in moments of crises
- Agreed templates for communication
- NCP Network documents

<https://circabc.europa.eu/ui/group/f41c4e1d-22a1-4e7b-aa31-cd16f126037d/library/7cf5831d-3f64-4990-8911-e01a67a0bd4e>

# Thank you



© European Union 2020

Unless otherwise noted the reuse of this presentation is authorised under the [CC BY 4.0](https://creativecommons.org/licenses/by/4.0/) license. For any use or reproduction of elements that are not owned by the EU, permission may need to be sought directly from the respective right holders.

