



IT

SE



IZSAM & SLU SCAW

The multi-national
WOAH Collaborating Centre on Animal Welfare

Lotta Berg, SLU SCAW



IZS

TERAMO

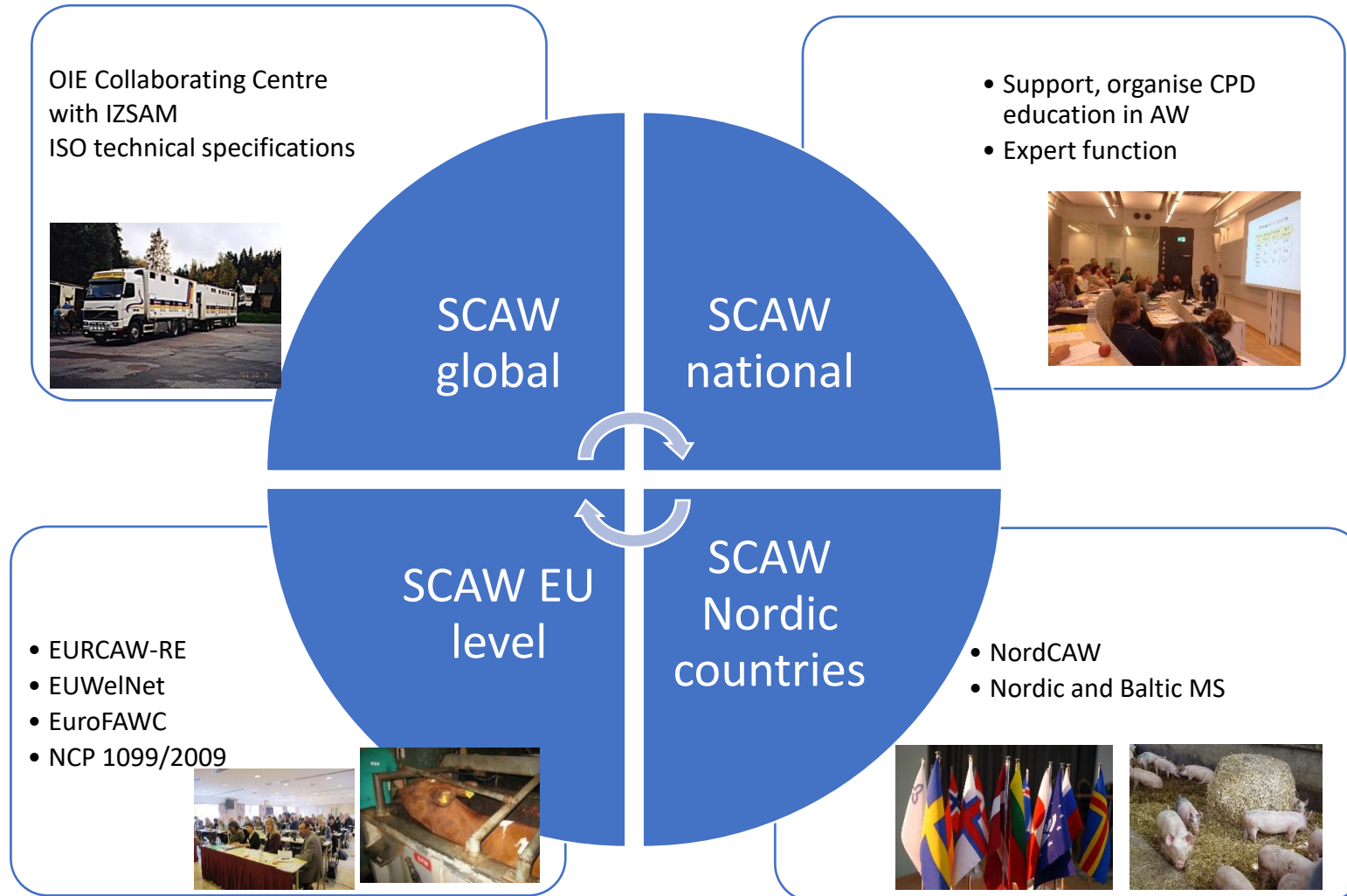
ISTITUTO
ZOOPROFILATTICO
SPERIMENTALE
DELL'ABRUZZO
E DEL MOLISE
"G. CAPORALE"



**WOAH Collaborating Centre
on Animal Welfare**



SLU Swedish Centre for Animal Welfare, SCAW



Swedish Centre for Animal Welfare, SCAW

SCAW has three primary functions:

- To support CPD education in the animal welfare area
 - To offer expert support to governmental authorities in this area
 - To work internationally on animal welfare policy and information
- National Contact point for animal protection at the time of killing (Council Regulation (EC) No 1099/2009)



Strong research in animal welfare

- human-animal relationship
- animal behaviour
- animal physiology
- animal welfare risk assessment
- animal genetics
- animal health and nutrition

Strong networks

- EFSA expert groups
- Welfare Quality Network
- EURCAW
- NordCAW
- etc.





T E R A M O

ISTITUTO
ZOOPROFILATTICO
SPERIMENTALE
DELL'ABRUZZO
E DEL MOLISE
"G. CAPORALE"

In conclusion...

Why IZSAM/SCAW consortium ?

COMPLEMENTARITY: cover various areas of AW

SYNERGY: increased efficiency and effectiveness

DIFFERENT APPROACHES TO ANIMAL WELFARE

(Mediterranean approach twins with Northern approach)

ADDED VALUE FOR THE OIE EUROPEAN REGION: special attention to the needs of countries willing to empower WOAH standards

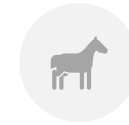


The consortium

- Mandate: each Steering Committee has the duration of a **4 year**
- Chair is appointed for a 2 year period and will be assigned alternately to IZSAM and SCAW
- Chairperson among the committee members from IZSAM/SCAW.



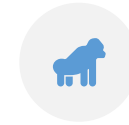
Animal Welfare in farming (terrestrial and aquatic animals)



Animal Welfare during transport (terrestrial and aquatic animals)



Animal Welfare at slaughter (terrestrial and aquatic animals)



Welfare of zoo and wild animals



Welfare of companion animals and human/animal relationship



Animal Welfare in epidemic and non-epidemic emergencies



Animal Welfare of animals used for scientific purposes



Education, training and communication on Animal Welfare



IZSAM SCAW CC Activity

- Contributing to the **WOAH Platform on Animal Welfare for Europe** - compliance with WOAHS standards on animal welfare.
- Maintaining the **WOAH Network of Animal Welfare Collaborating Centres** in order to seek for collaboration opportunities with other centres of expertise.
- Highlighting the importance of animal welfare when implementing the **United Nations' Sustainable Development Goals (SDGs)**.
- Contributing, via workshops, publications and courses, to the general knowledge about the **link between good animal husbandry and efficient preventive veterinary medicine** and the effects not only on animal health but also on animal welfare in general.
- Establishing a **knowledge exchange platform for sustainable animal transport**.
- Identify areas where knowledge is insufficient and **contribute to research and advice** related to animal welfare at **slaughter**.



Long distance transport

- Long distance transport of live animals: WOAH:s standards and best practices including societal perception and communication aspects



Checklists, contingency plans...

Upcoming meeting in Paris in January



Animal welfare and the UN SDGs

- WOAH animal Welfare Forum (virtual meeting) and the UN Sustainable Development Goals

Quantifying the strengths of the links between improving animal welfare and achieving the different SDGs

Interaction	Name	Explanation
+3	<u>Indivisible</u>	Inextricably linked to the achievement of another goal
+2	<u>Reinforcing</u>	Aids the achievement of another goal
+1	<u>Enabling</u>	Creates conditions that further another goal
0	<u>Consistent</u>	No significant positive or negative interactions
-1	<u>Constraining</u>	Limits options on another goal
-2	<u>Counteracting</u>	Clashes with another goal
-3	<u>Cancelling</u>	Makes it impossible to reach another goal



- Rating for each SDG:
 - How achieving the SDG would impact animal welfare



- How improving animal welfare would impact the SDG



Twinning project with Tunisia

- Training activities and knowledge exchange on AW with the National School of Veterinary Medicine and the General Direction of Veterinary Services
- Establishment of a permanent training system on AW
- Support the development of revised AW legislation based on WOAH TAHC
- Networking with other North African countries (Algeria, Morocco, Libya, Mauritania)

Main Objective

Improve the technical knowledge and skills of the National School of Veterinary Medicine (ENMV) in the field of animal welfare, and support it in the process that will eventually lead to acquire the status of WOAH CC for Animal Welfare in the North African Sub-region



EURCAW—Ruminants & Equines

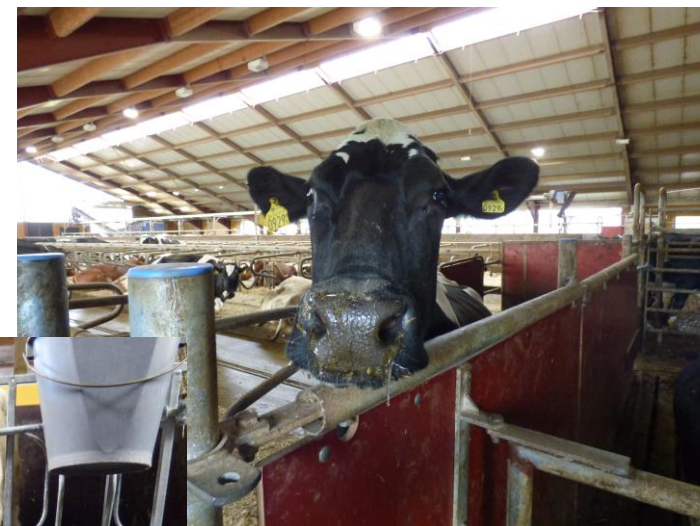
- **Sweden**, Swedish University of Agricultural Sciences (SLU) including the Swedish Centre for Animal Welfare (**SCAW**)
- **Italy**, Istituto Zooprofilattico Sperimentale dell'Abruzzo e del Molise "G. Caporale" (**IZSAM**)
- France, French National Institute for Agriculture, Food, and Environment (INRAE)
- Austria, University of Natural Resources and Life Sciences (BOKU)
- Ireland, University College Dublin (UCD)
- Greece, Ellinikos Georgikos Organismos-Dimitra/Veterinary Research Institute (ELGO-VRI)



Linking to other projects

Care4Dairy

- Best practices to increase the welfare of dairy calves, heifers, cows and end-of-career cows.
- Farmer-centered approach
- Linked to EURCAW— Ruminants & Equines.



Thank you for your attention!

