



Istituto Zooprofilattico Sperimentale
del Lazio e della Toscana M. Aleandri



Ministero della Salute

OIE COLLABORATING CENTRE FOR THE APPLICATION OF GOOD BEEKEEPING MANAGEMENT PRACTICES AND BIOSECURITY MEASURES IN THE APICULTURE SECTOR



IZSLT

Lab of Apiculture, hive products and diseases





Main focus area of the proposed OIE collaborating Centre:

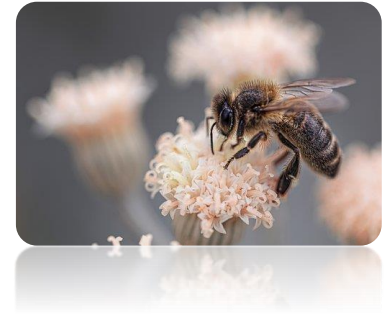
Focus Area 3. Animal health management

- Bee Diseases control, risk assessment and preparedness
- Good Beekeeping Practices
- Biosecurity measures in beekeeping/value-chain biosecurity
- Innovation in prevention and control of bee diseases (e.g. bacteriophages, bacteriocins, integrated pest management – IPM, organic compounds, etc.)
- Sustainable approach to control bee diseases
- Proper use of antimicrobials in bees
- Antimicrobial resistance





Istituto Zooprofilattico Sperimentale
del Lazio e della Toscana *M. Aleandri*



Other focus areas

Focus Area 1. Laboratory expertise

Focus Area 4. Animal production

Focus Area 5. Veterinary products

Focus Area 6. Wildlife health and biodiversity





Istituto Zooprofilattico Sperimentale
del Lazio e della Toscana *M. Aleandri*



Support the OIE and its Member Countries over the 5-year designation period

It supports an increase of quality of hive productions, orienting toward a proper and prudent use of the medicines in beekeeping, **in line with the OIE Sixth Strategic Plan.**





Istituto Zooprofilattico Sperimentale
del Lazio e della Toscana *M. Aleandri*



IZSLT is active on providing expertise and promoting (1):

- the application of Good Beekeeping Practices (GBPs) and biosafety measures;
- multi-focal studies aiming at assessing the efficacy of veterinary drugs for a low environmental impact;
- harmonized protocols in collaboration with the EURL for Bee Health and others OIE Laboratories (eg OIE notifiable diseases for bees)
- conditions for a safe national and international trade;





IZSLT is active on providing expertise and promoting (2):

- the application of non-invasive modern technologies to monitor the health of the bees;
- early prediction to facilitate a transparent management of bee health;
- reduction of the biological risk and early diagnosis and detection of honey bee pathogens.





Roma



Latina-Frosinone



Viterbo-Rieti



Firenze-Arezzo



Grosseto-Siena



Pisa

<http://www.izslt.it/>



@izs_lazio_toscana





Istituto Zooprofilattico Sperimentale
del Lazio e della Toscana *M. Aleandri*

Many thanks for your kind attention

