

Epidemic Situation on ASF in Russia



*Alexey Igolkin, Head of Reference Laboratory for ASF
FGBI «ARRIAH»*

Kiev, 22-23 of March 2018



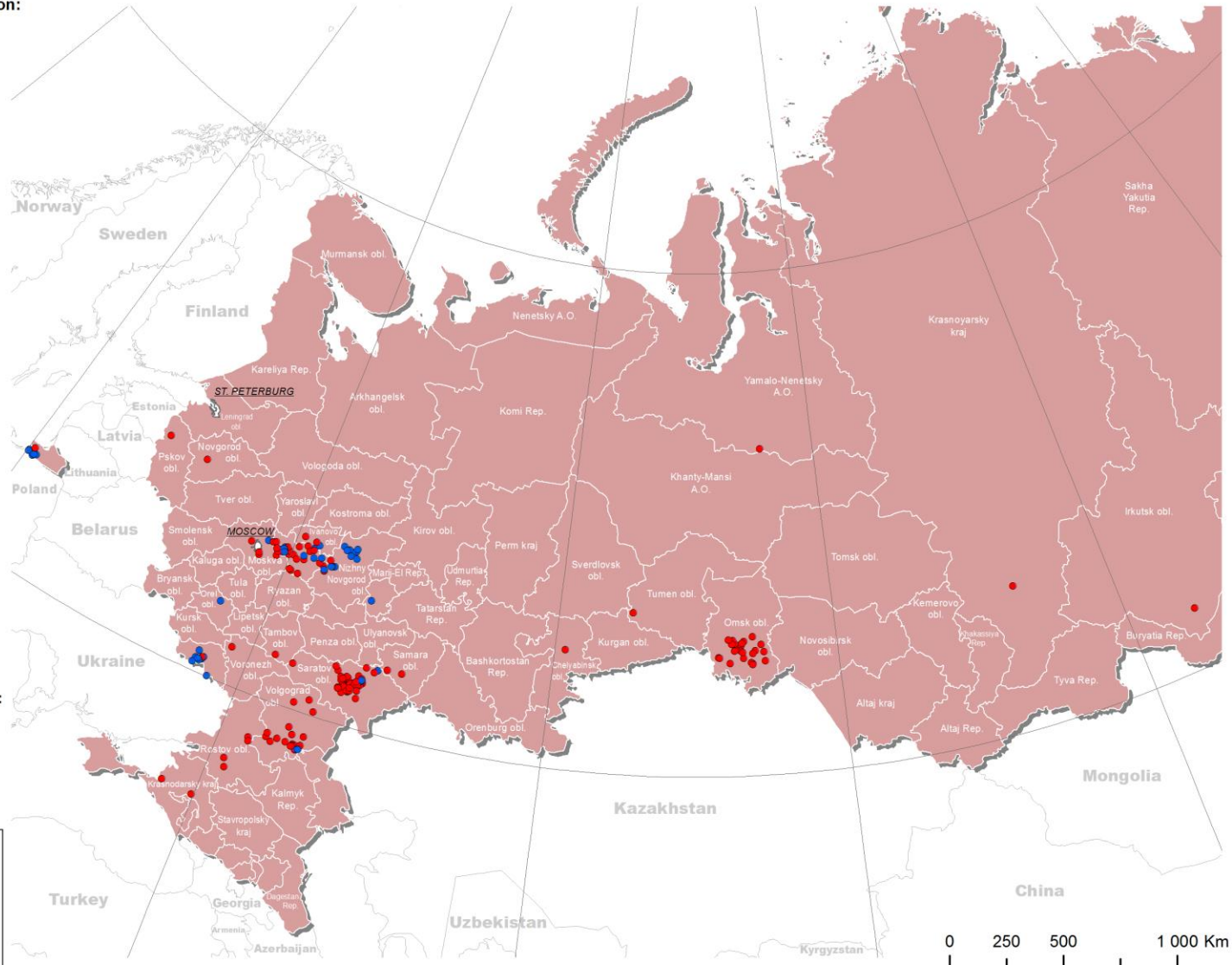
ASF epidemic situation in the Russian Federation, 2017

(OIE data; N = 188 as of 31.12.2017)

Карта составлена информационно-аналитическим центром Управления ветернадзора Россельхознадзора.
Дата составления: 21.03.2018

Number of outbreaks by region and population:

- | | |
|--|--|
| Belgorod obl.:
livestock - 2
wild - 8 | Omsk obl.:
livestock - 29
wild - no |
| Vladimir obl.:
livestock - 20
wild - 7 | Orel obl.:
livestock - no
wild - 1 |
| Volgograd obl.:
livestock - 19
wild - 2 | Pskov obl.:
livestock - 1
wild - no |
| Voronezh obl.:
livestock - 1
wild - no | Chuvash Rep.:
livestock - no
wild - 1 |
| Ivanovo obl.:
livestock - 3
wild - 2 | Rostov obl.:
livestock - 4
wild - no |
| Irkutsk obl.:
livestock - 1
wild - no | Samara obl.:
livestock - 2
wild - no |
| Kaliningrad obl.:
livestock - 1
wild - 6 | Saratov obl.:
livestock - 46
wild - 4 |
| Krasnodar kraj.:
livestock - 2
wild - no | Tambov obl.:
livestock - 1
wild - no |
| Krasnoyarsk kraj.:
livestock - 1
wild - no | Tyumen obl.:
livestock - 1
wild - no |
| Moscow obl.:
livestock - 4
wild - 1 | Chelyabinsk obl.:
livestock - 1
wild - no |
| Nizhny Novgorod obl.:
livestock - 2
wild - 13 | Yamalo-Nenetsky a.o.:
livestock - 1
wild - no |
| Novgorod obl.:
livestock - 1
wild - no | |



ASF outbreaks:

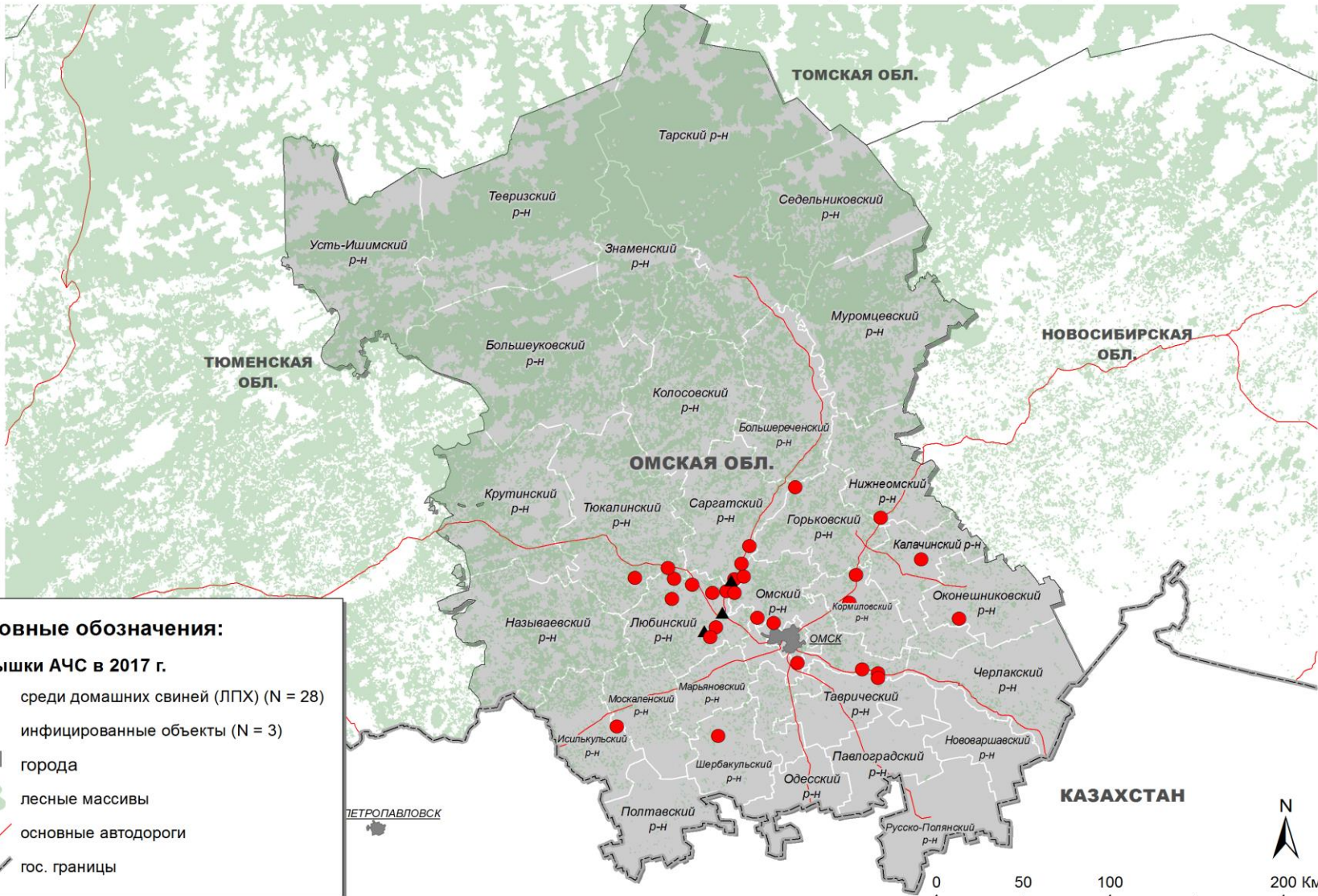
- in livestock pigs (N = 143)
- in wild boars (N = 45)

0 250 500 1 000 Km



Outbreaks of ASF in the territory of Omsk region in 2017

по данным ФГБУ "Центр ветеринарии" и МЭБ на 30.09.2017 г.

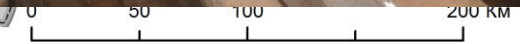




Outbreaks of ASF in the territory of Omsk region in 2017



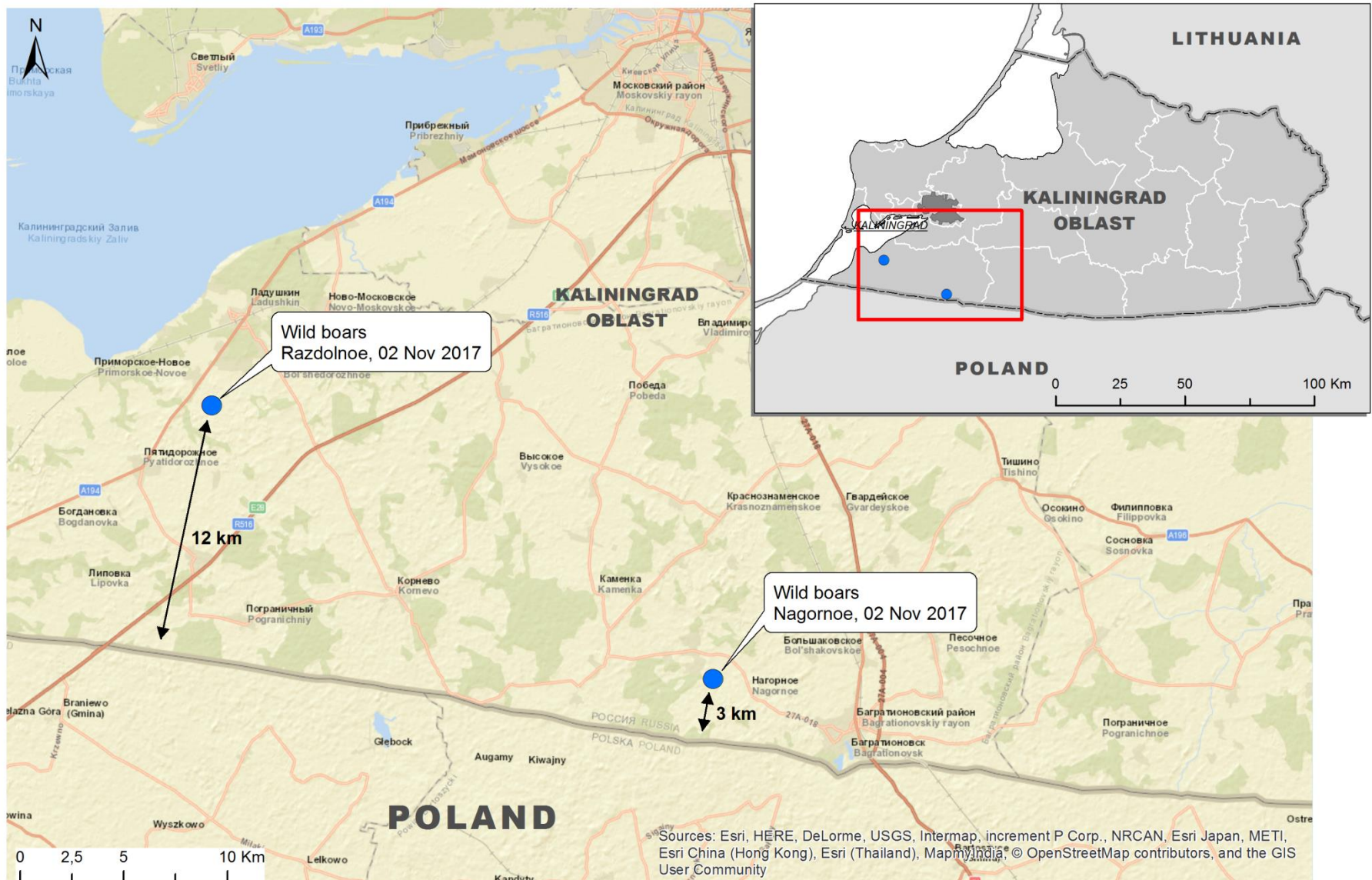
по данным ФГБУ "Центр ветеринарии" и МЭБ на 30.09.2017 г.





The first ASF outbreaks in Kaliningrad oblast, 2017

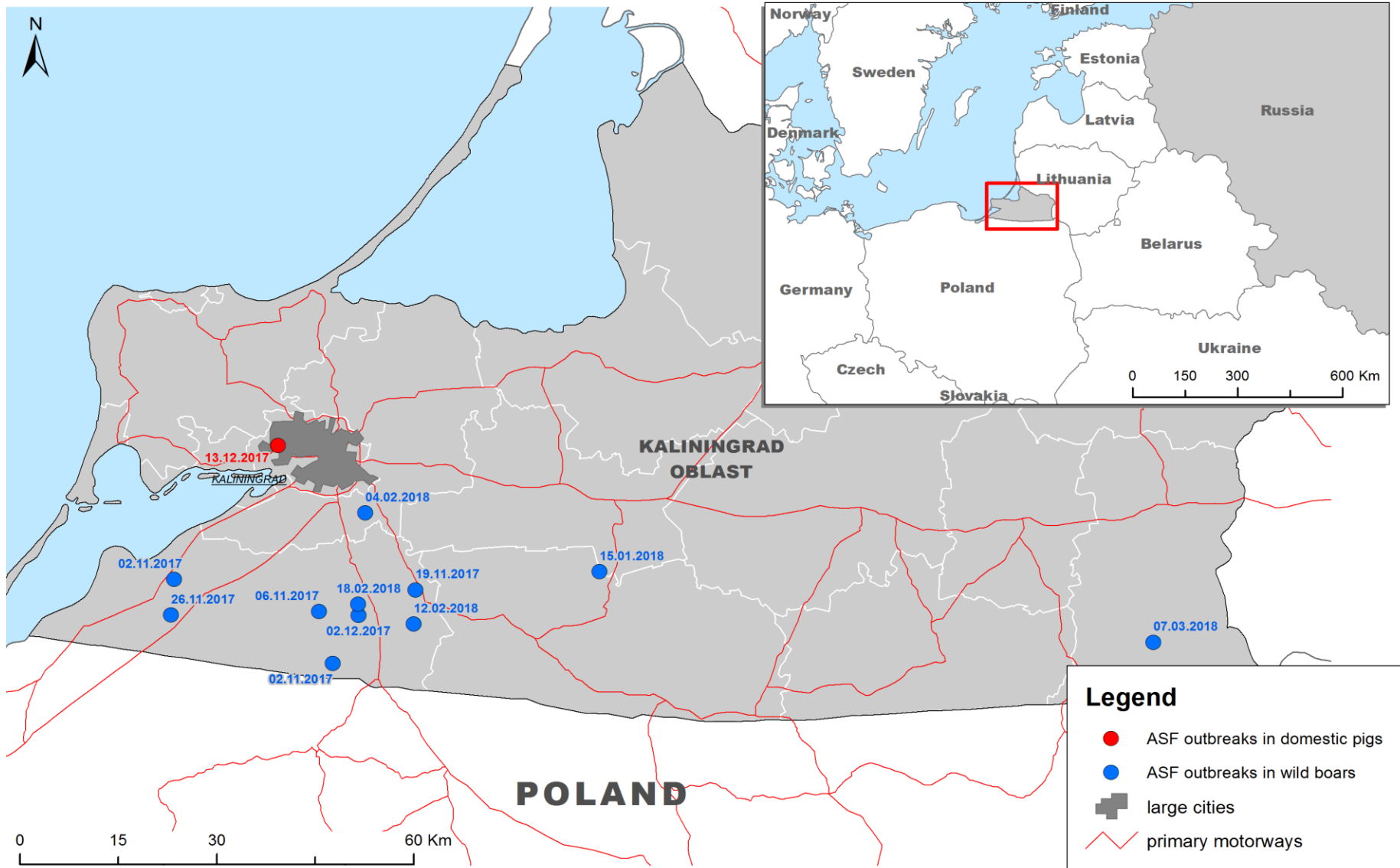
OIE data





ASF outbreaks in Kaliningrad oblast, 2017 - 2018

OIE data as of 21.03.2018





ASF epidemic situation in the Russian Federation, 2018

(OIE data; N = 14 as of 21.03.2018)

Карта составлена информационно-аналитическим центром Управления ветеринарии Россельхознадзора. Дата составления: 21.03.2018

Number of outbreaks by region and population:

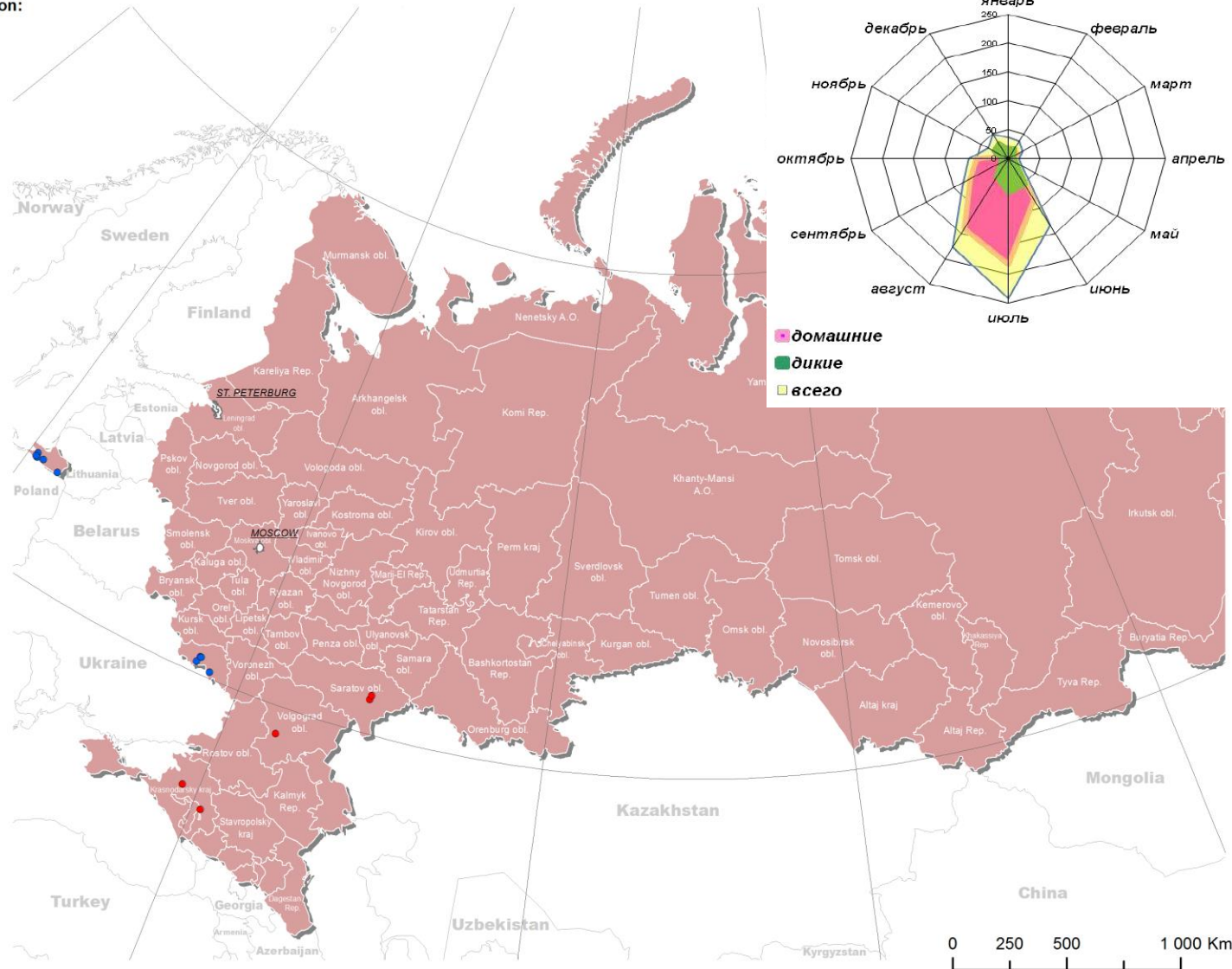
Belgorod obl.:
 livestock - no
 wild - 4

Volgograd obl.:
 livestock - 1
 wild - no

Kaliningrad obl.:
 livestock - no
 wild - 5

Krasnodar kraj.:
 livestock - 2
 wild - no

Saratov obl.:
 livestock - 2
 wild - no





Strategy for ASF control and eradication program in the RF regions include the following elements:

early detection and laboratory confirmation of the disease

early identification of infected and potentially infected sites, including pig houses, cold stores

rapid destruction of carcasses and animal care items, disinfection

rapid imposition of effective quarantine in the infected and potentially infected areas

rapid communication about the disease and effective control to prevent the movement of pigs and pig products

depopulation and control of the number of wild boars



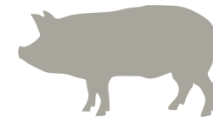


ASF control



In wild animals

- **Minimization of contacts** "Wild-home swine»
- **Epidemiological:** status forest- and hunting farm in terms of epizootology
- **Targeted control of population** of wild pigs in infected and containment zones
- **Search and destruction** of carcasses
- **Entomological monitoring**



In agrarian sector

- **Monitoring:** clinical inspection, inspection and post mortem sampling and seromonitoring, notification of cases by the owners/hunters
- **Quarantine** (maximum incubation period - 30 days), observation in infected, containment zones
- **Movement control** in infected, containment and risk zones
- **Bio security** on the pig farms (compartments)
- **Compartmentalization:** legal and epizootic status
- **Zoning** of the country's territory by the degree of threat and risk
- **Stamping-out and destruction** in the infected and containment zones
- **Cleaning and disinfection** in the outbreaks and infected settlements
- **Control of vectors** in all zones
- Sentinel animals and recovery of the industry in infected zones/regions
- **PR** of the ASF problem

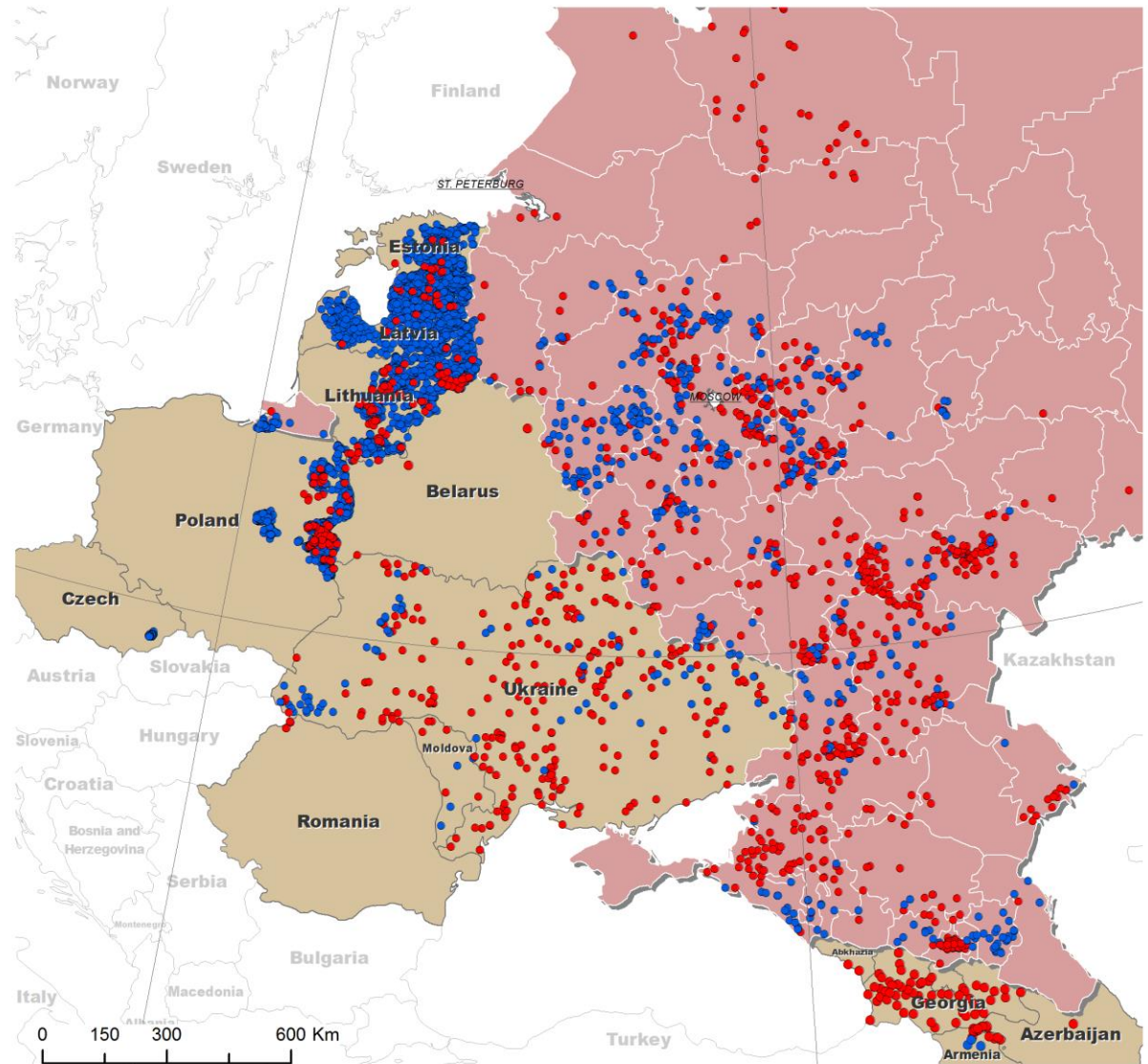
ASF epidemic situation in the Russian Federation and Eastern European countries, 2007 - 2018

(OIE data as of 21.03.2018)



Карта составлена
информационно-аналитическим центром
Управления ветнадзора Россельхознадзора.
Дата составления: 21.03.2018

Azerbaijan (2008) livestock - 2 wild - нет	Poland (2014 - 2018) livestock - 107 wild - 1436
Armenia (2007 - 2011) livestock - 25 wild - 3	Russia (2007 - 2018) livestock - 783 wild - 508
Belarus (2013) livestock - 2 wild - нет	Romania (2017 - 2018) livestock - 5 wild - нет
Georgia (2007) livestock - 60 wild - нет	Ukraine (2012 - 2018) livestock - 261 wild - 77
Latvia (2014 - 2018) livestock - 50 wild - 2322	Czech Republic (2017 - 2018) livestock - нет wild - 211
Lithuania (2014 - 2017) livestock - 66 wild - 755	Estonia (2014 - 2016) livestock - 18 wild - 1034
Moldova (2016 - 2017) livestock - 7 wild - 3	



Legend:

- ASF outbreaks in livestock pigs
- ASF outbreaks in wild boars



**Thank you for your
attention!**