



# GF-TADs

GLOBAL FRAMEWORK FOR THE  
PROGRESSIVE CONTROL OF  
TRANSBOUNDARY ANIMAL DISEASES



Standing Group of Experts on Rabies  
in Europe  
under the GF-TADs umbrella

1st meeting (SGE RAB1)  
Brussels, 13 February 2019

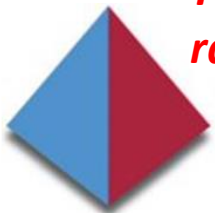
**Report by Kosovo Food and  
Veterinary Agency**

*Dr. Valdet Gjinovci, CEO/CVO*

# Rabies epidemiology – evolution since 2016

	2016	2017	2018	2019
Total number of indigenous cases*	Nil	Nil	Nil	
Species / number of cases	- Fox: - Dog: - Bovine: - ...			
Number of cases < 50 km from a neighbouring country (please detail)	Nil	Nil	Nil	

***Two rabies cases in foxes in 2007 (Strpce Municipality), an unconfirmed case of rabies in a fox in Autumn 2014 (Suhareke Municipality)***



# Map of Rabies cases



**Standing Group of Experts on Rabies in Europe** under the GF-TADs umbrella

# Rabies monitoring / surveillance since 2016

	2016	2017	2018	2019
Total number of FATS <sup>(1)</sup> performed on indicator animals <sup>(2)</sup>	1	2	Nil	
Species	- Fox - Dog <b>1</b> - Bovine - ...	- Fox - Dog <b>2</b> - Bovine - ...	- Fox - Dog - Bovine - ...	- Fox - Dog - Bovine - ...
Total number of biomarker tests and ELISA tests performed in hunted animals	Nil	Nil	Nil	

(1) FATS = fluorescent antibody test ;

(2) Indicator animals = animals that show clinical signs or abnormal behaviour suggestive of rabies, animals found dead, road kills and animals involved in human exposure

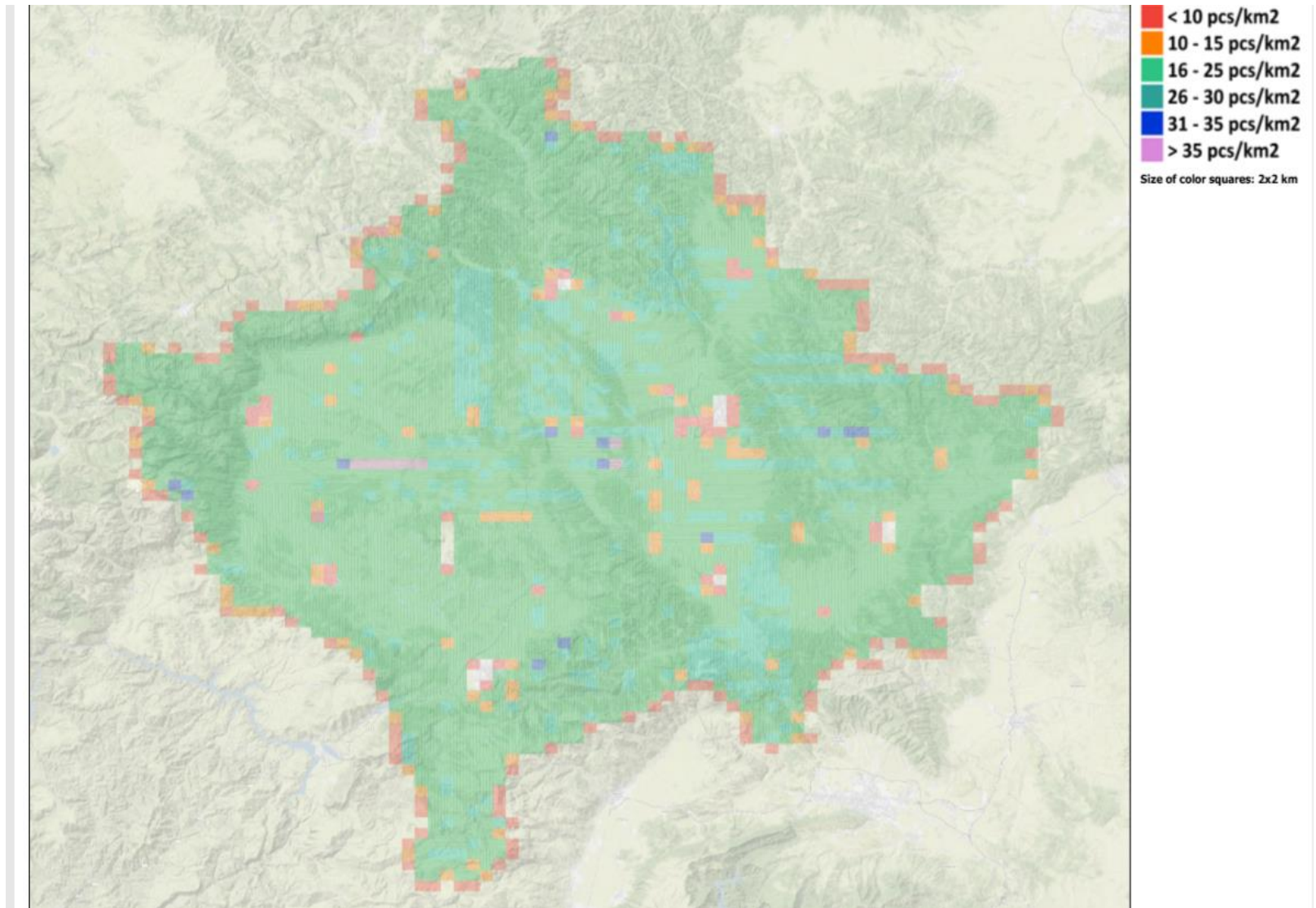
# Rabies oral vaccination campaigns since 2016

	2016	2017	2018
Spring campaign	Dates: <input type="checkbox"/> Whole country <input type="checkbox"/> Parts of country and area vaccinated (km <sup>2</sup> ):	Dates: <input type="checkbox"/> Whole country <input type="checkbox"/> Parts of country and area vaccinated (km <sup>2</sup> ):	Dates: 28/05 – 01/6/18 <input checked="" type="checkbox"/> Whole country <input type="checkbox"/> Parts of country and area vaccinated (km <sup>2</sup> ):
Fall campaign	Dates: <input type="checkbox"/> Whole country <input type="checkbox"/> Parts of country and area vaccinated (km <sup>2</sup> ):	Dates: <input type="checkbox"/> Whole country <input type="checkbox"/> Parts of country and area vaccinated (km <sup>2</sup> ):	Dates: 25 - 28/10/18 <input checked="" type="checkbox"/> Whole country <input type="checkbox"/> Parts of country and area vaccinated (km <sup>2</sup> ):
Oral vaccin used (Raboral, Rabigen, Fuchsoral, Lysvulpen, or Other – please detail)	Vaccine:  Bait density (baits/km <sup>2</sup> ):	Vaccine:  Bait density (baits/km <sup>2</sup> ):	Vaccine: Lysvulpen  Bait density (baits/km <sup>2</sup> ): 16 - 25

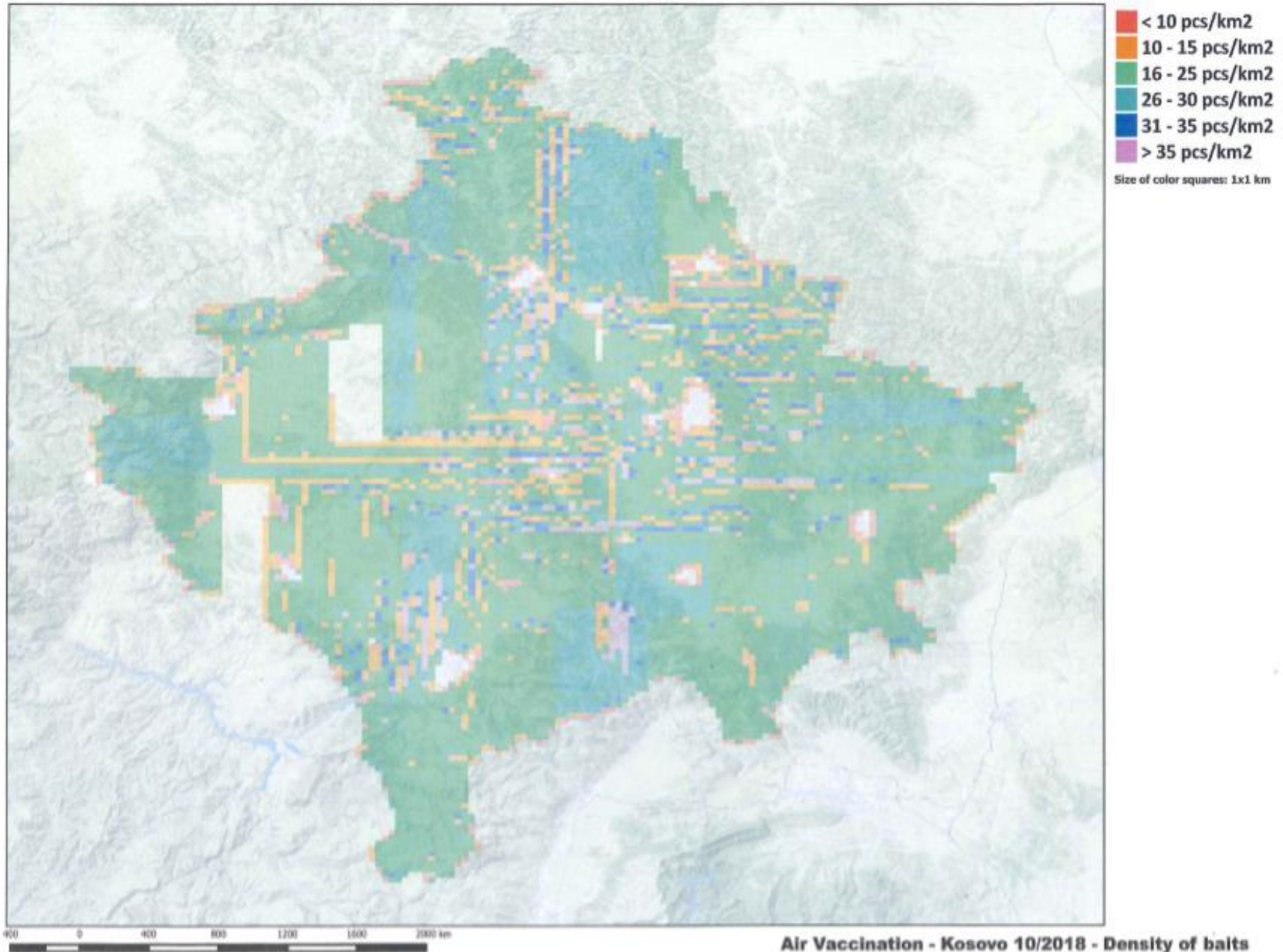
# The delivery of vaccines - airplanes



# Map of Vaccination areas – Spring 2018



# Map of Vaccination areas – Autumn 2018





# Specific Plans for 2019

	Spring campaign	Fall campaign
Dates		
- At national level	- Yes	Yes
And specifically at		
- border with...	- ...	
- Border with...	- ...	
- Border with...	- ...	
Covered territory	All of Kosovo	All of Kosovo
Oral vaccine used	Lysvulpen	Lysvulpen
Particular needs		



# Specific Plans for 2020 and beyond (as appropriate)

	Spring campaign	Fall campaign
Dates		
- At national level	- Yes	Yes
And specifically at		
- border with...	- ...	
- Border with...	- ...	
- Border with...	- ...	
Covered territory	All of Kosovo	All of Kosovo
Oral vaccine used	Lysvulpen	Lysvulpen
Particular needs		



**THANK YOU**



---

**Standing Group of Experts on Rabies in Europe** under the GF-TADs umbrella