

African swine fever in Poland



Krzysztof Jazdzewski
Deputy Chief Veterinary Officer

GF-TADs, Kijev, 22-23 March 2018

Update on epizootic situation



ASF cases in wild boar in 2018 as of 20 March 2018

- ✓ **832** cases since 1 January
- ✓ In total **17 364** cases since the first case on 17 February 2014 till 20 March 2018



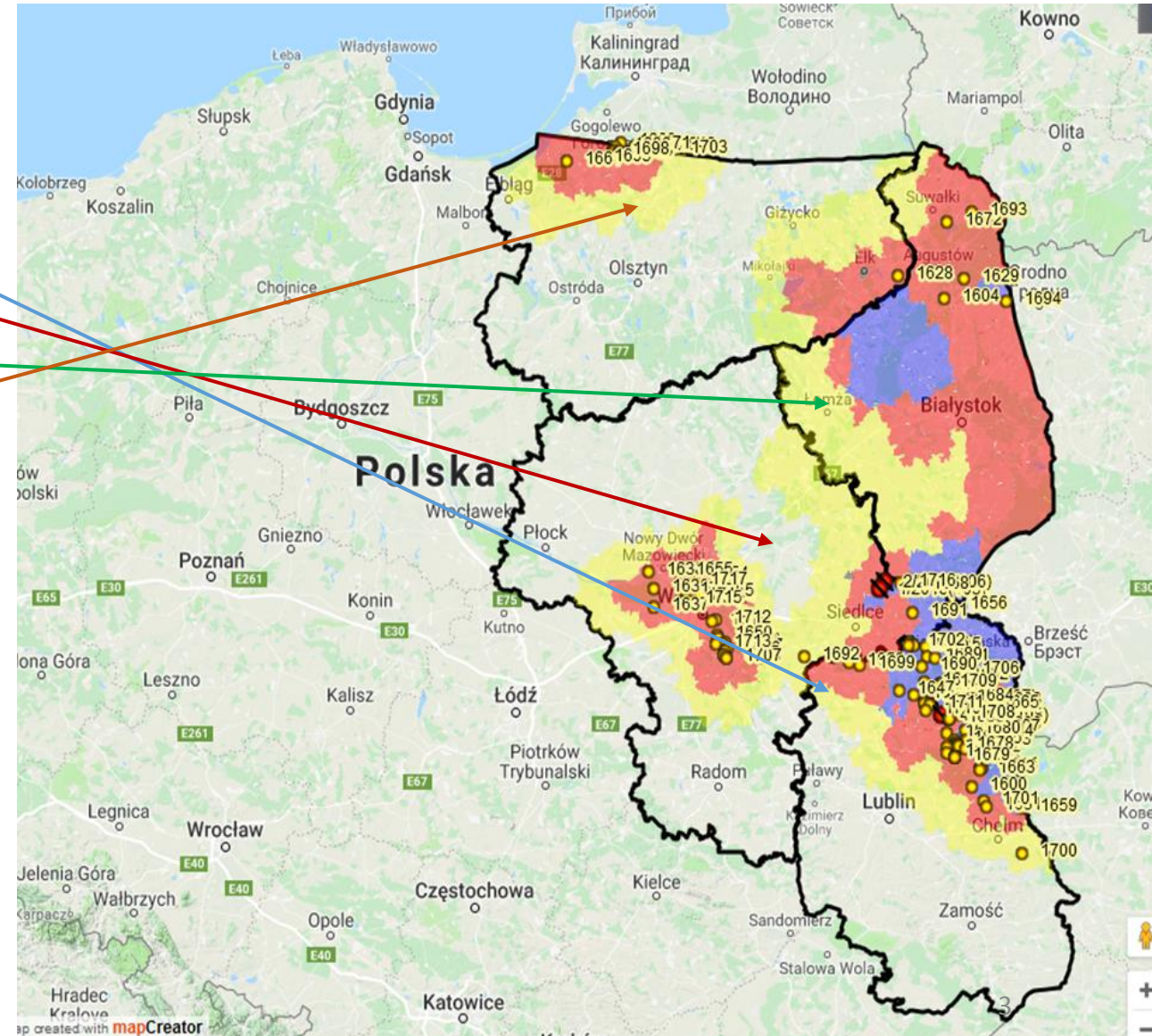
ASF outbreaks in pigs in 2018:

- ✓ **4** outbreaks since 1 January
- ✓ In total **108** outbreaks since 2014

Update on epizootic situation – ASF cases and outbreaks

Voivodeship		Number of ASF cases in wild boar in 2018 (as of 15 March 2018)
1	Lubelskie	393
2	Mazowieckie	266
3	Podlaskie	74
4	Warmińsko – Mazurskie	57
Total		790

Voivodeship		Number of ASF outbreaks in pigs in 2018 (as of 15 March 2018)
1	Lubelskie	2
2	Mazowieckie	2
Total		4



Regionalisation due to the occurrence of ASF – CID 2014/709

Last amendments– CID 2018/263 of 20 February 2018

Outbreaks and cases of ASF are located in 4 regions:

- ✓ Warmińsko-Mazurskie
- ✓ Podlaskie
- ✓ Mazowieckie
- ✓ Lubelskie



➤ Part I of the Annex to CID 2014/709/EU



➤ Part II of the Annex to CID 2014/709/EU



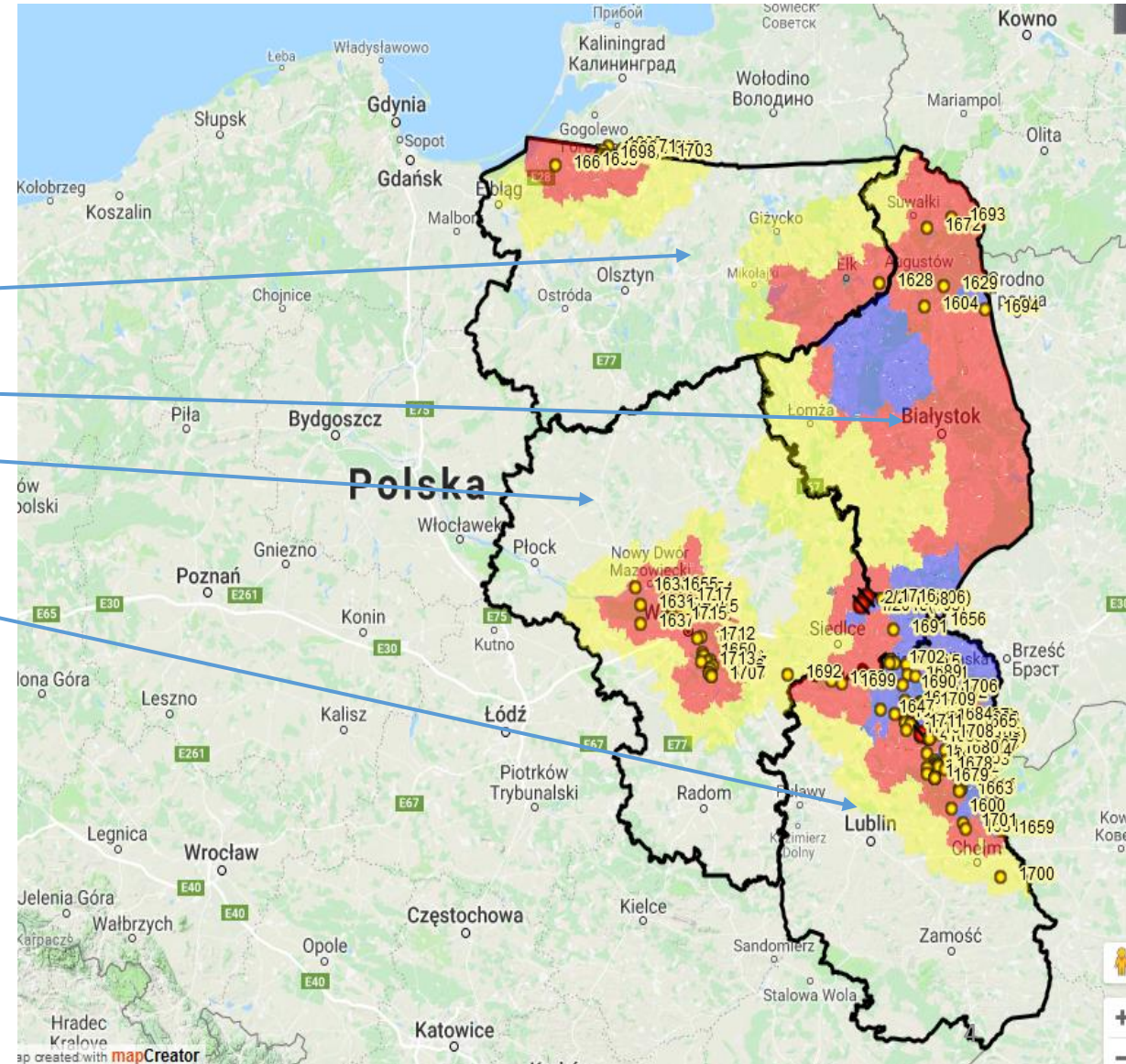
➤ Part III of the Annex to CID 2014/709/EU



outbreak in pigs



case in wild boar



Measures undertaken in connection with occurrence of African swine fever (additional requirements for holdings in the whole territory of Poland).

ORDERS:

- ✓ Separate pig keeping with separate entrances and no direct access to other premises where other ungulates are kept.
- ✓ Feed protected against access of wild animals.
- ✓ Protection of pig buildings against wild and other domestic animals access.
- ✓ Register of means of transport for pigs entering the holding and register of persons entering into the premises where pigs are kept.
- ✓ Census of pigs in the holding, divided into piglets, weaners, fatteners, sows, gilts, boars, young boars and updates of this list.

Measures unndertaken in connection with occurence of African swine fever cont.

ORDERS:

- ✓ Using of protective clothing and protective footwear only for the purposes of handling pigs in the holding and hygiene measures necessary to reduce the risk of spread of ASF, including disinfection of hands and footwear.
- ✓ Regular cleaning and disinfection of equipment used for handling the pigs.
- ✓ Place disinfection mats, respectively, in front of entries to premises where pigs are kept as well at the exits. The width of the mats should not be smaller than the width of entrance or exit, the length - not less than 1 m.

Current other actions for the purpose of maximum reduction of wild boar population (from 2017)

Maximum reduction of the population of wild boars in the whole territory of Poland through consequent application of hunting plans, shooting of wild boars

Increasing financial incentives for wild boars shot in sanitary shooting including adult females.

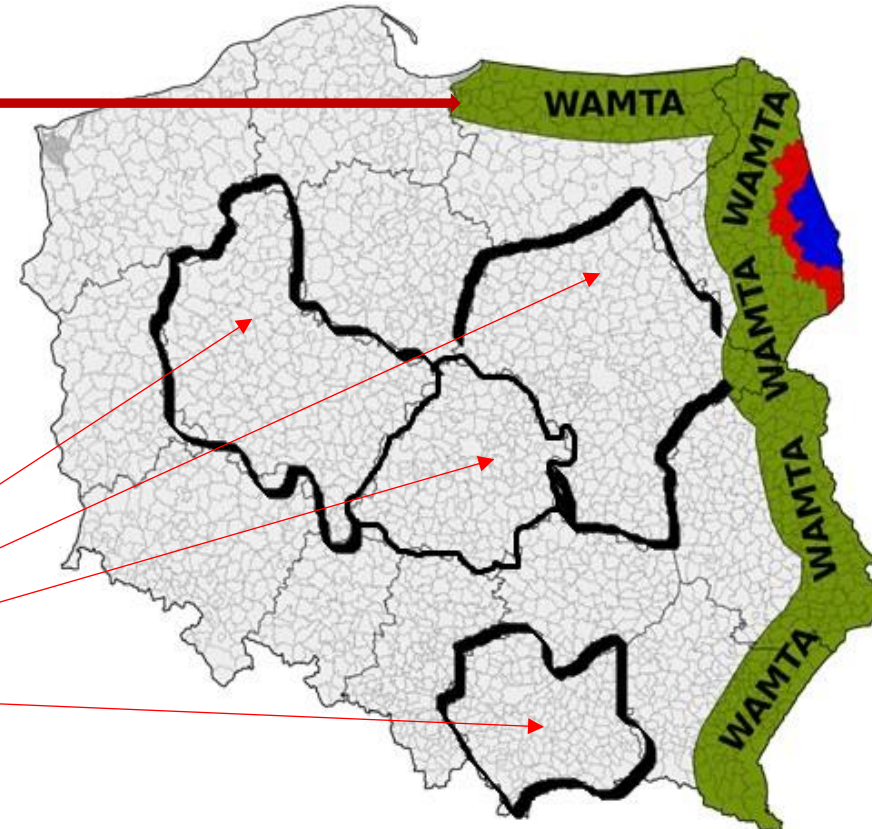
Active search of WB carcasses. If possible every 2 weeks.

Cooperation with Polish Armed Forces, Police, Border Guard, State Fire Service.

Sanitary shooting of wild boars from March 2017

Currently, the WAMTA area determines only a belt of around 50 km along the border with Ukraine, Belarus and Russia (Kaliningrad Region).

- Carried out in the area of WAMTA (Wider Area for Medium Term Actions) → 50 km wide strip of land from the border of the restricted area and along the Eastern border of Poland with Belarus, Ukraine and Kaliningrad Oblast.
- In the restricted areas due to ASF
- Along the main highways
- The main goal is to maximally reduce the population of wild boar to the level of ca. 0,1 wild boar/km².



As far as sanitary shooting of wild boar is concerned, 20 924 wild boar, including 11 126 females were shot from March 2017 till 19 March 2018

The example of monitoring sheet concerning active search of WB corpses 03.03.2018 r. – 16.03.2018

Województwo	Przybliżona wielkość przeszukanego obszaru (ha)	Nazwy jednostek organizacyjnych uczestniczących w działaniach związanych ze zbieraniem i utylizacją padłych dzików (np. LP, PZŁ, OSP)	Łączna liczba znalezionych dzików (zwłoki całe, lub objedzone, lub szczątki) (szt.)
Lubelskie	1440	LP, PZŁ, SZ RP, IW	0
Mazowieckie	8326	PZŁ, LP, IW	56
Podlarskie	5478	PZŁ, IW, LP	0
Podlaskie	5154	LP, PZŁ, IW	1
Warmińsko - Mazurskie	20975	PZŁ, LP, SG, SZRP	15
Total	41 373		72

Additional measures undertaken in connection with the occurrence of African swine fever in wild boar from 2018

After amendments to the national ASF monitoring programme, the size of WAMTA area will extend in such a way as to include those administrative units (municipalities) of the territory of the Republic of Poland, which:

- in their whole or in part are located in the belt up to 100 km from the border of the Republic of Poland with the Kaliningrad Region, Lithuania, Belarus and Ukraine, with the exception of the municipalities located in Part I, II and III of the Annex to Decision 2014/709/EU; and
- in their whole or in part are located in the belt up to 100 km from the outer border of the area listed in parts II and III of the Annex to Decision 2014/709/EU, with the exception of the municipalities located in Part I in the above mentioned strip of land.

Monitoring programme

Number of animals tested for ASF within the framework of the national ASF monitoring programme in the whole territory of Poland

	January – February 2018	Number of positive results	Number of negative results
Number wild boar tested	8 134	1 179 (14 %)	6 955
Number of pigs tested	57 493	54 (0.09 %)	57 439

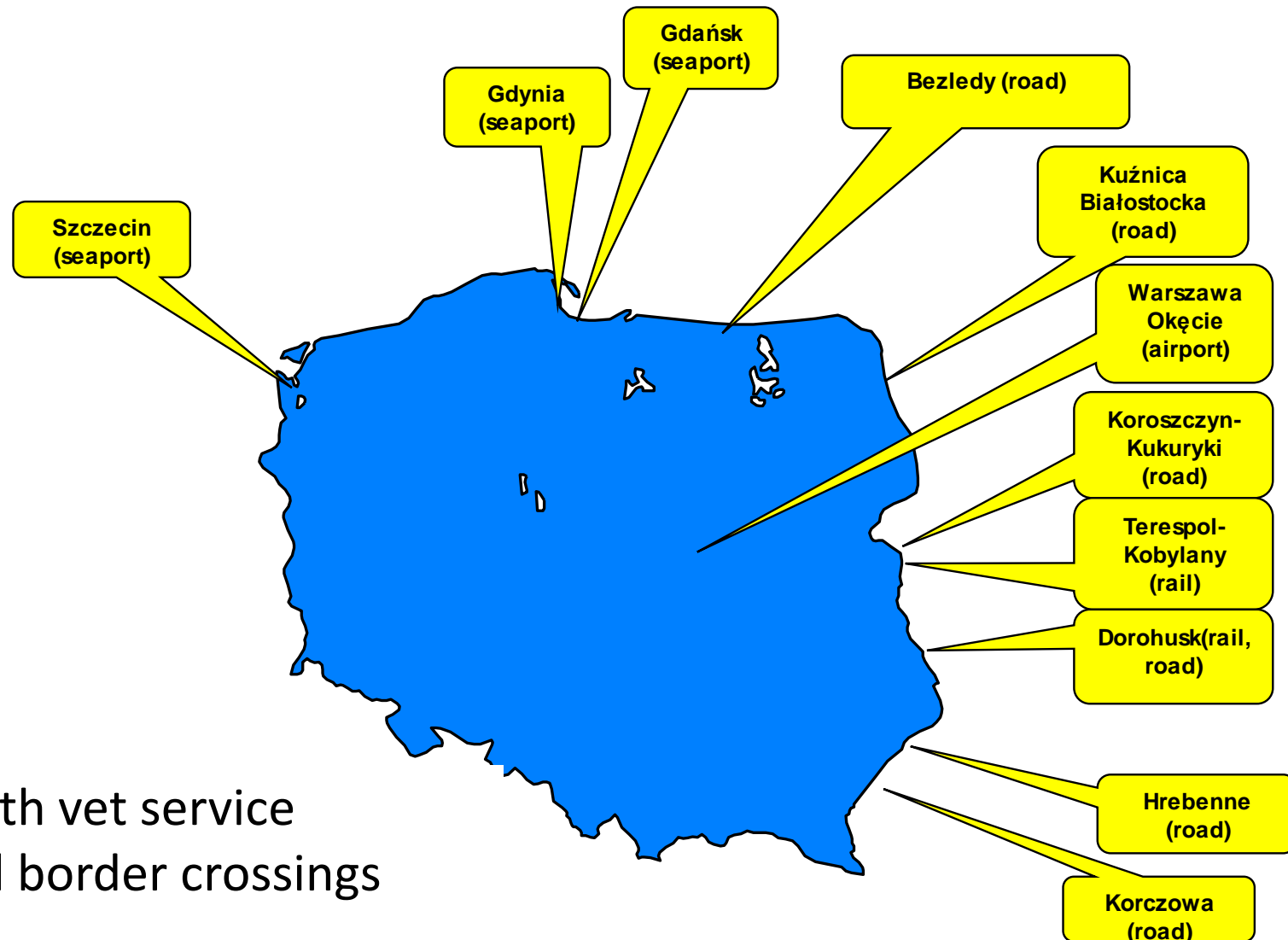
Risk communication strategy

- ✓ The new target of information campaigns are i: travel agencies, transporters, speditors.
- ✓ The decision makers are involved in the inter – ministerial task force.
- ✓ Active participation in EU strategy development.

Laboratory diagnostic and capability

- ✓ 5 regional state laboratories are being prepared together with NRL.
- ✓ The accreditation process, infrastructure for PSL 3 preparedness and validation of methods and proficiency test are organized training of staff.
- ✓ Additional training for veterinarians concerning sampling, preparing and dispatch of material are continued.

Border veterinary check



11 BIPS with vet service
App. 70 all border crossings

Personal import

Regulation 206/2009

- Part of travellers luggage or small consignments for private persons (art. 1);
- MS have to provide information to travellers and to general public (art. 3).

Choroby nie znają granic



Przywożąc mięso lub produkty mleczne spoza krajów UE ryzykujesz zawleczenie chorób zwierzęcych.

W razie braku zgłoszenia takich produktów, możesz zostać ukarany karą grzywny lub pociągnięty do odpowiedzialności karnej.

Takie produkty będą konfiskowane i niszczone z chwilą przybycia.

Wyjątek stanowią państwa: Andora, Chorwacja, Wyspy Owcze, Grenlandia, Islandia, Liechtenstein, Norwegia, San Marino, Szwajcaria, z których można przywozić niewielkie ilości takich produktów z przeznaczeniem do własnej konsumpcji.



KOMISJA EUROPEJSKA

Personal import

- Reg. 206/2009 prohibits the entry into the EU of products of animal origin from third countries in personal luggage.
- This is a category I material, only for destruction!



**Nie pozwólmy,
aby zakaźne choroby zwierzęce przedostały
się do Unii Europejskiej!**

Produkty pochodzenia zwierzęcego
mogą zawierać patogeny
powodujące choroby zakaźne u zwierząt



Istnieją ścisłe normy postępowania oraz kontrole weterynaryjne
dotyczące sprowadzania do Unii Europejskiej
produktów pochodzenia zwierzęcego

 **Podróżujący (*) zobowiązani są
do poddawania tych produktów
oficjalnym kontrolom**

(*) Z wyjątkiem podróżnych wwozących małe ilości do indywidualnego spożycia z terytorium: Andory, Chorwacji, Grenlandii, Islandii, Liechtensteinu, Norwegii, San Marino, Szwajcarii i Wysp Owczych.

Personal import

Services responsible for the tasks according to Reg. 206/2009:

- **Governors** – provide information to travellers and to general public (art. 3)

- **National Revenue Administration** – control travellers luggage or small consignments (art. 5) and cover the costs of disposal (art. 6)

Personal language

Services responsible for the tasks according to Reg. 206/2009:

- **Local Veterinary Authority** - competent for supervision establishments which take up with handling, storage, transport, disposal material category 1.

Personal language

CVO web-site: www.wetgiw.gov.pl

- Information for the travellers (leaflets, posters);
- List of third countries which reported outbreaks of infectious diseases of animals (foot and mouth disease, african swine fever, classical swine fever, highly pathogenic avian influenza etc.) for the Customs – risk assesment.

Personal language

Ogniska chorób zakaźnych w krajach trzecich, które mogą być groźne ze względu na zawleczenie ich w bagażu osobistym

Kraj	Choroba
Ukraina	Epidemiczna Biegunka Świń - nowe powiadomienie
	Afrykański Pomór Świń
	Klasyczny Pomór Świń
Stany Zjednoczone	Wysoce Zjadliwa Ptasia Grypa - nowe powiadomienie
Izrael	Wysoce Zjadliwa Ptasia Grypa - nowe powiadomienie
	Pryszczyca
Kanada	Wysoce Zjadliwa Ptasia Grypa - nowe powiadomienie
Federacja Rosyjska	Wysoce Zjadliwa Ptasia Grypa - nowe powiadomienie
	Afrykański Pomór Świń
	Klasyczny Pomór Świń
	Pryszczyca
Białoruś	Afrykański Pomór Świń
Algieria	Pryszczyca
Egipt	Pryszczyca
Libia	Pryszczyca
Tunezja	Pryszczyca
Korea Południowa	Wysoce Zjadliwa Ptasia Grypa
Meksyk	Wysoce Zjadliwa Ptasia Grypa
Australia	Wysoce Zjadliwa Ptasia Grypa

Leaflets according to Annex IV 206/2009, in:

- Polish
- English
- Russian
- Ukrainian language.



Główny Inspektorat Weterynarii
ul. Wspólna 30, 00-930 Warszawa
tel.: 22 623 20 88, fax: 22 623 14 08
e-mail: wet@wetgiw.gov.pl

www.wetgiw.gov.pl



ЕВРОПЕЙСЬКА КОМІСІЯ

Не допускаймо,
щоб заразні хвороби тварин
пробралися на територію ЄС!

**Продукти тваринного походження
можуть містити патогени, які
викликають інфекційні захворювання**



Ураховуючи ризик ввезення хворіб на територію Євросоюзу (ЄС), існують суворі процедури, що стосуються ввезення деяких продуктів тваринного походження на територію ЄС.

Ці процедури не застосовуються у відношенні до перевезення продуктів тваринного походження поміж 28 державами – членами ЄС або у відношенні до продуктів, що походять з Андорри, Ліхтенштейну, Норвегії, Сан-Марино та Швейцарії.

Усі продукти тваринного походження, що не виконують цих вимог, потрібно здати для офіційного усунення після прибуття на територію ЄС.



**Незаявлення про ці продукти може
потягнути за собою штраф або
порушення кримінальної справи.**

Customs Service and Veterinary Inspection cooperate to increase biosecurity at the border and minimize the risk of introducing animal disease into the European Union:

- regular meetings on the central and local level
- trainings of the customs by veterinary officers
- Ministry of Finance forwarding to CVO

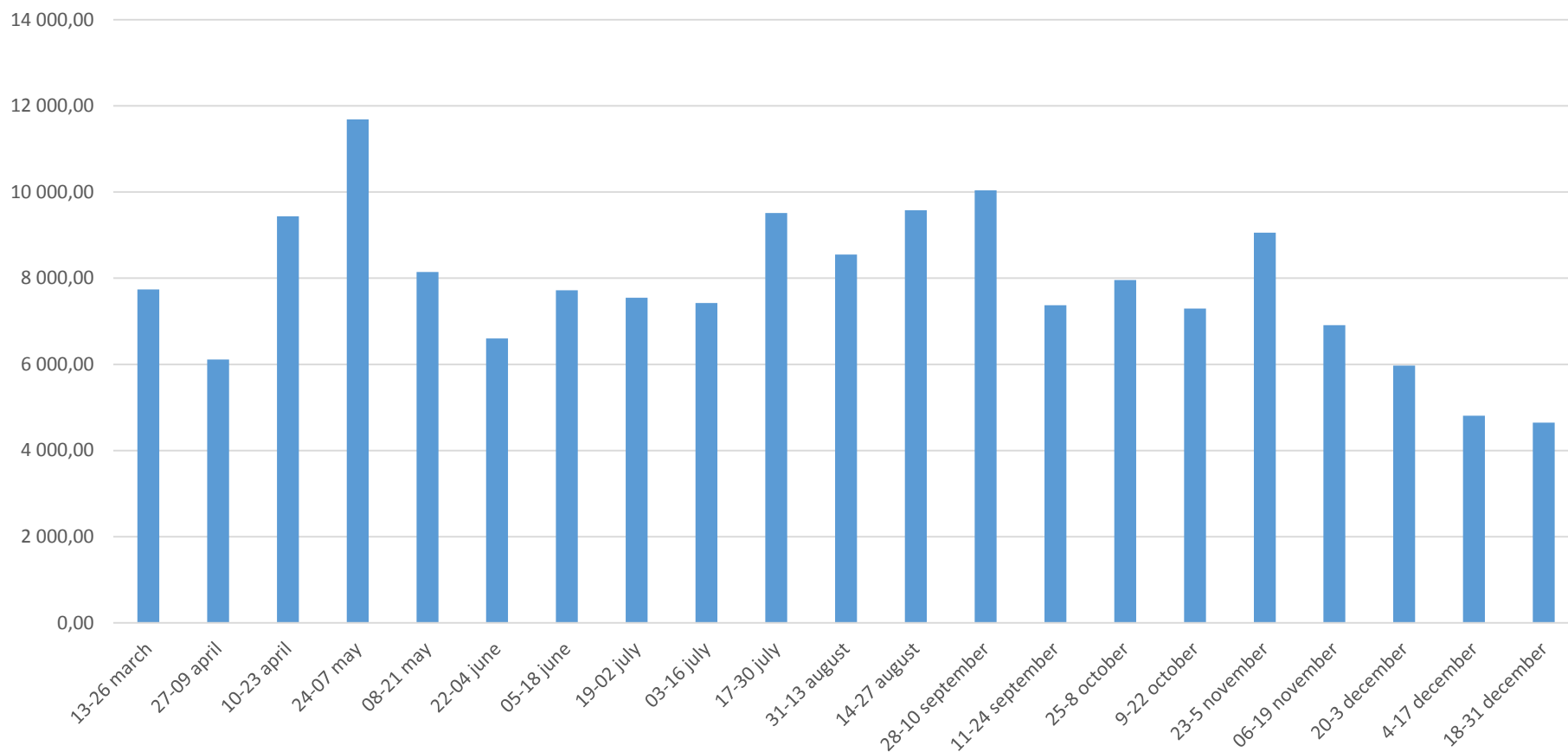
two-week reports on amounts of confiscated products of animal origin and inspected by customs empty vehicles

- checks on travelers luggage are carried out jointly by two services



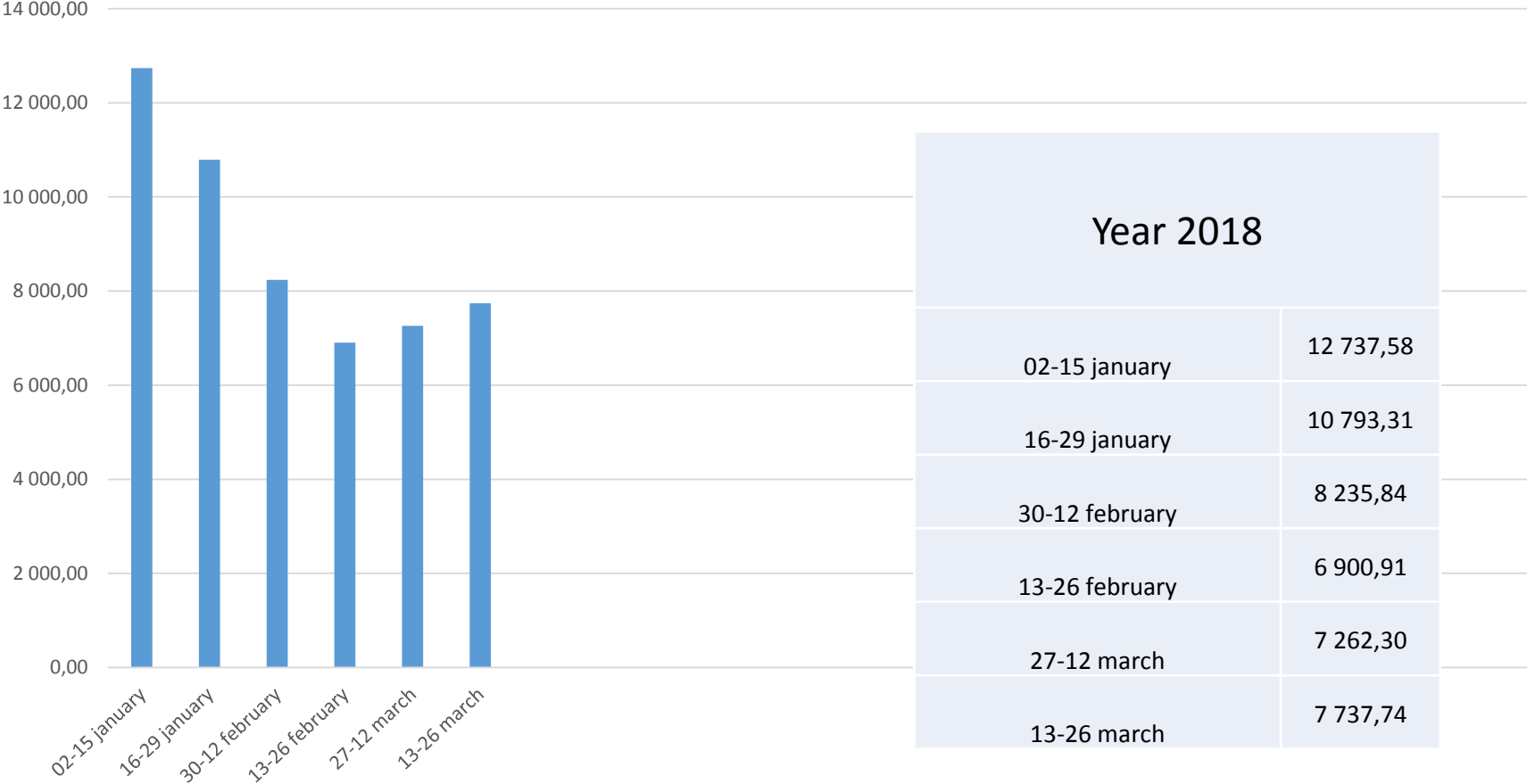
Personal import

Quantity (in kilograms) of animal products transported, detained and disposed of at the external border of the European Union in 2017



Personal import

Quantity (in kilograms) of animal products transported, detained and disposed of at the external border of the European Union in 2018



Thank you for your attention