



Food and
Veterinary Service
Republic of Latvia

ASF epidemiological situation in Latvia – 2017

Mārtiņš Seržants

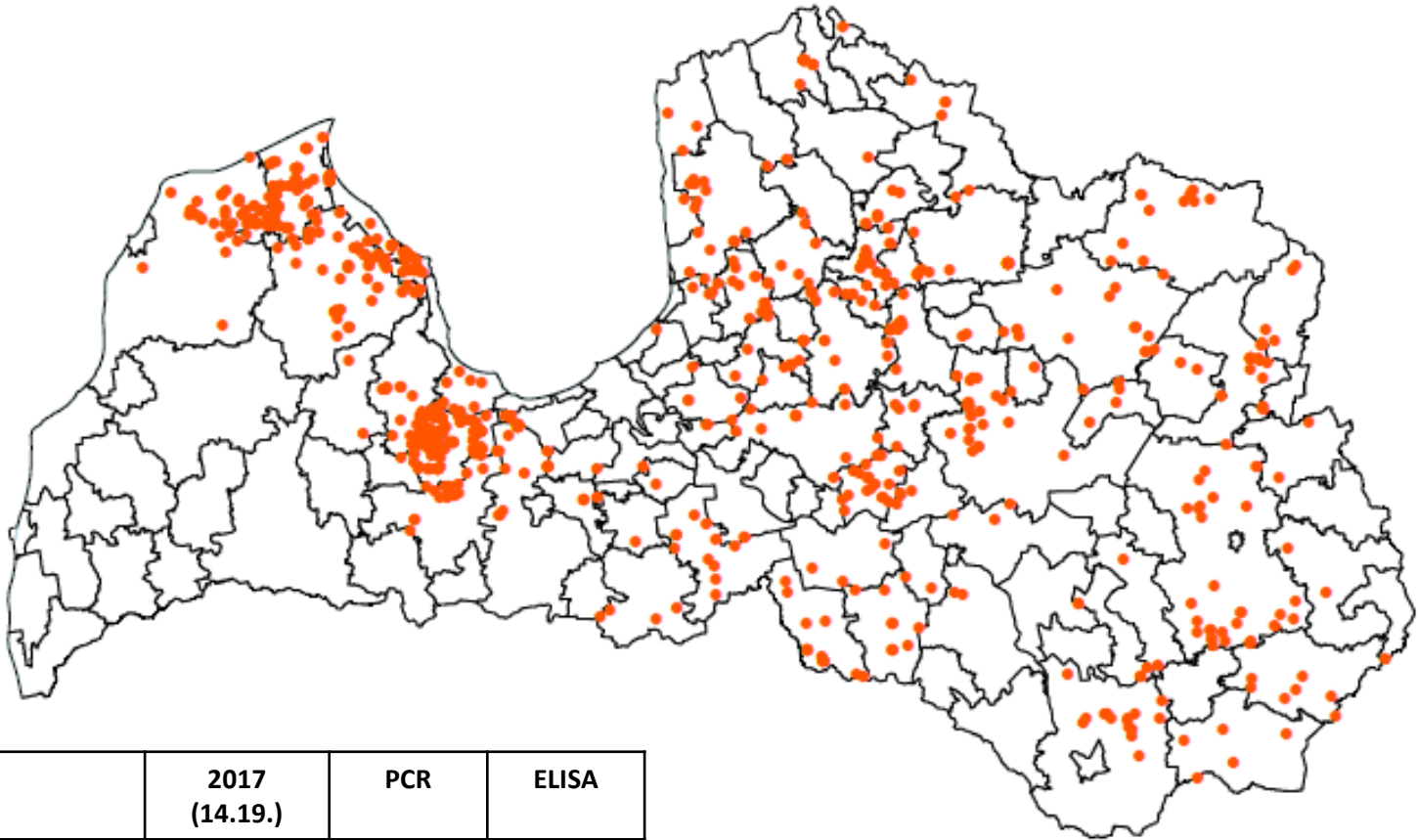
Food and Veterinary service of Latvia

GF TAD`s
Chisinau, 20.09.2017.



Food and
Veterinary Service
Republic of Latvia

ASF cases in 2017 (on 14.09.2017)



	2017 (14.19.)	PCR	ELISA
Wild boar Tested	9080	9080	8503
Hunted	8336		
Found dead	744		
Wild boar cases	989	767	222
Hunted	403		
Found dead	586		

● WB cases 2017



Food and
Veterinary Service
Republic of Latvia

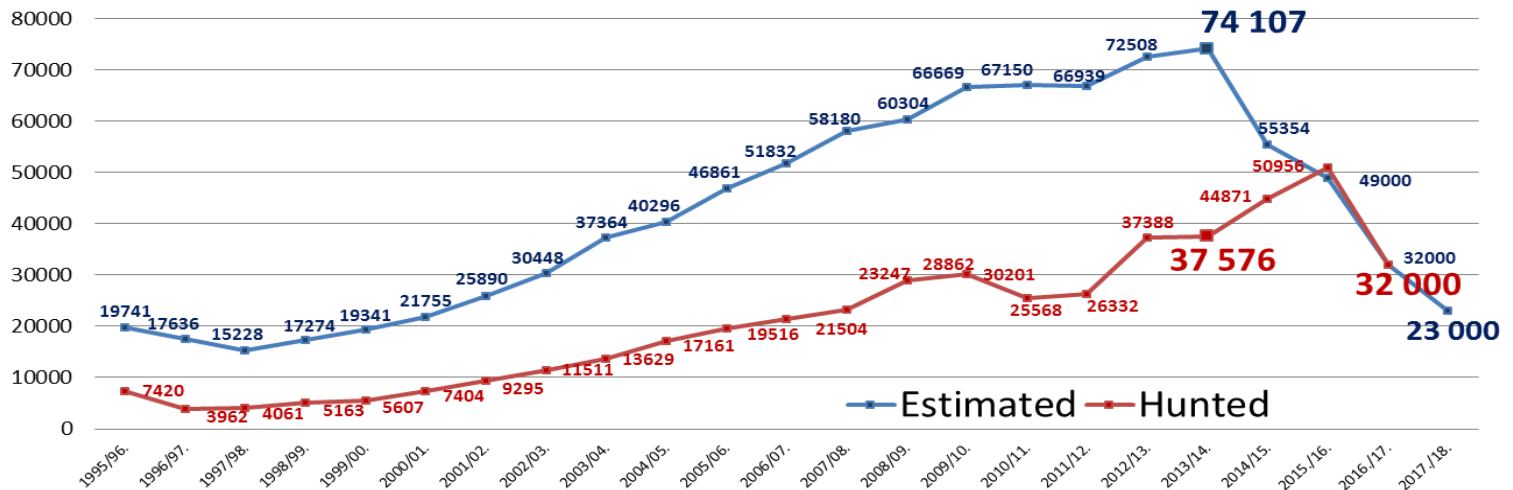
Disposal of wild boar carcass





Estimation of wild boar population in Latvia

Financial support in combination with informative campaigns rise hunting activity and wild boar female hunting as well.



Since the year 2014 estimated number of wild boar reduce 3x.



Food and
Veterinary Service
Republic of Latvia

Feeding and baiting

- Feeding is forbidden
- Baiting is important tool for hunting (attraction)





Food and
Veterinary Service
Republic of Latvia

Feeding or baiting don't play important role in mild winter or under certain condition...





Food and
Veterinary Service
Republic of Latvia

Wild boar biology

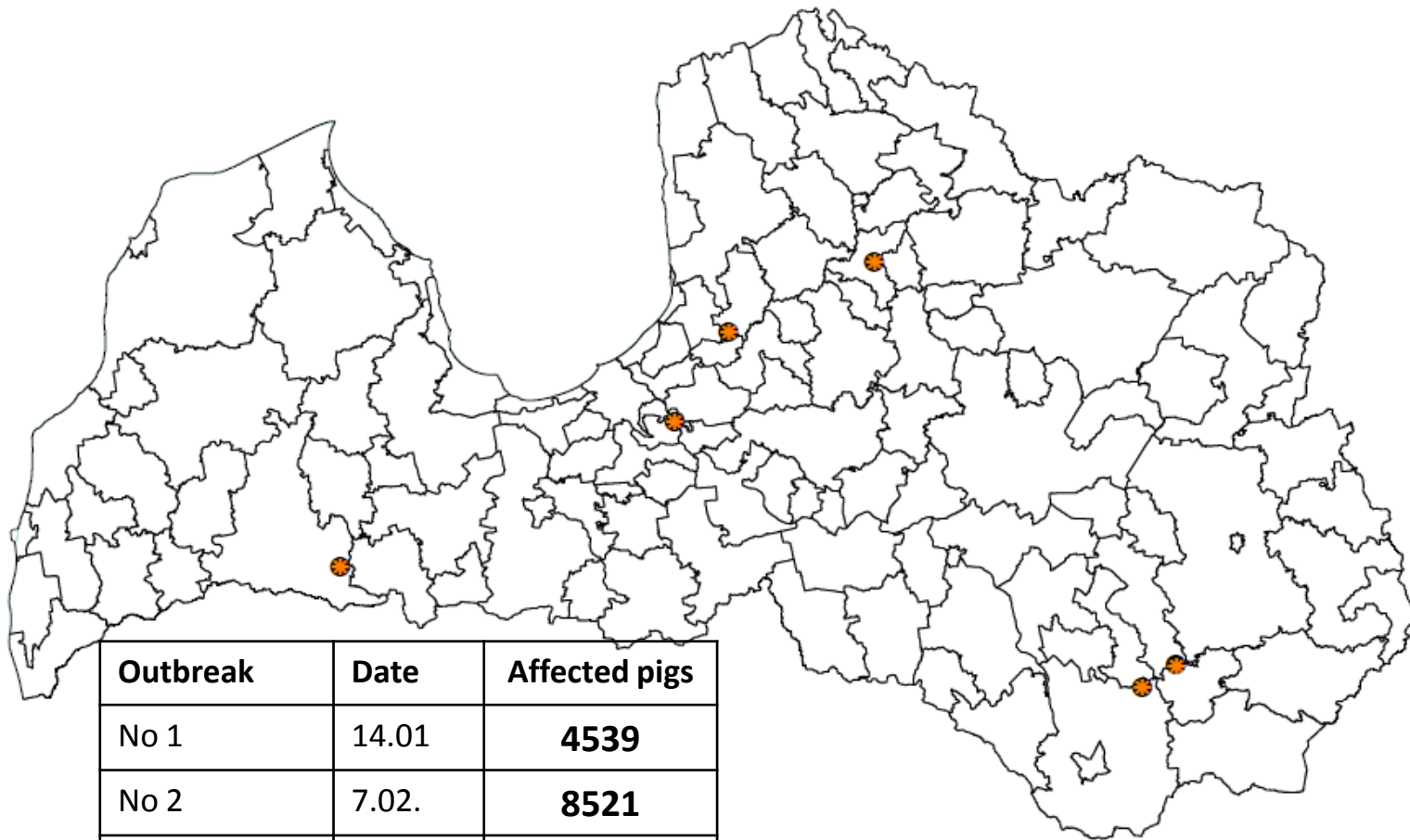
Reproduction of WB
could be fastest than
virus inactivation in
environment.






Food and
Veterinary Service
Republic of Latvia

Outbreaks in 2017 (on 17.09.2017)



Outbreak	Date	Affected pigs
No 1	14.01	4539
No 2	7.02.	8521
No 3	12.07.	3
No 4	14.07.	5818
No 5	3.09.	9
No 6	13.09.	23

 Outbreaks 2017



Food and
Veterinary Service
Republic of Latvia

Logistic and disposal of carcasses in the case of large outbreaks

Rendering plants are overloaded during the outbreaks!
Alternative disposal methods could be a solution.





Food and
Veterinary Service
Republic of Latvia

LABORATORY CAPABILITY AND DIAGNOSIS

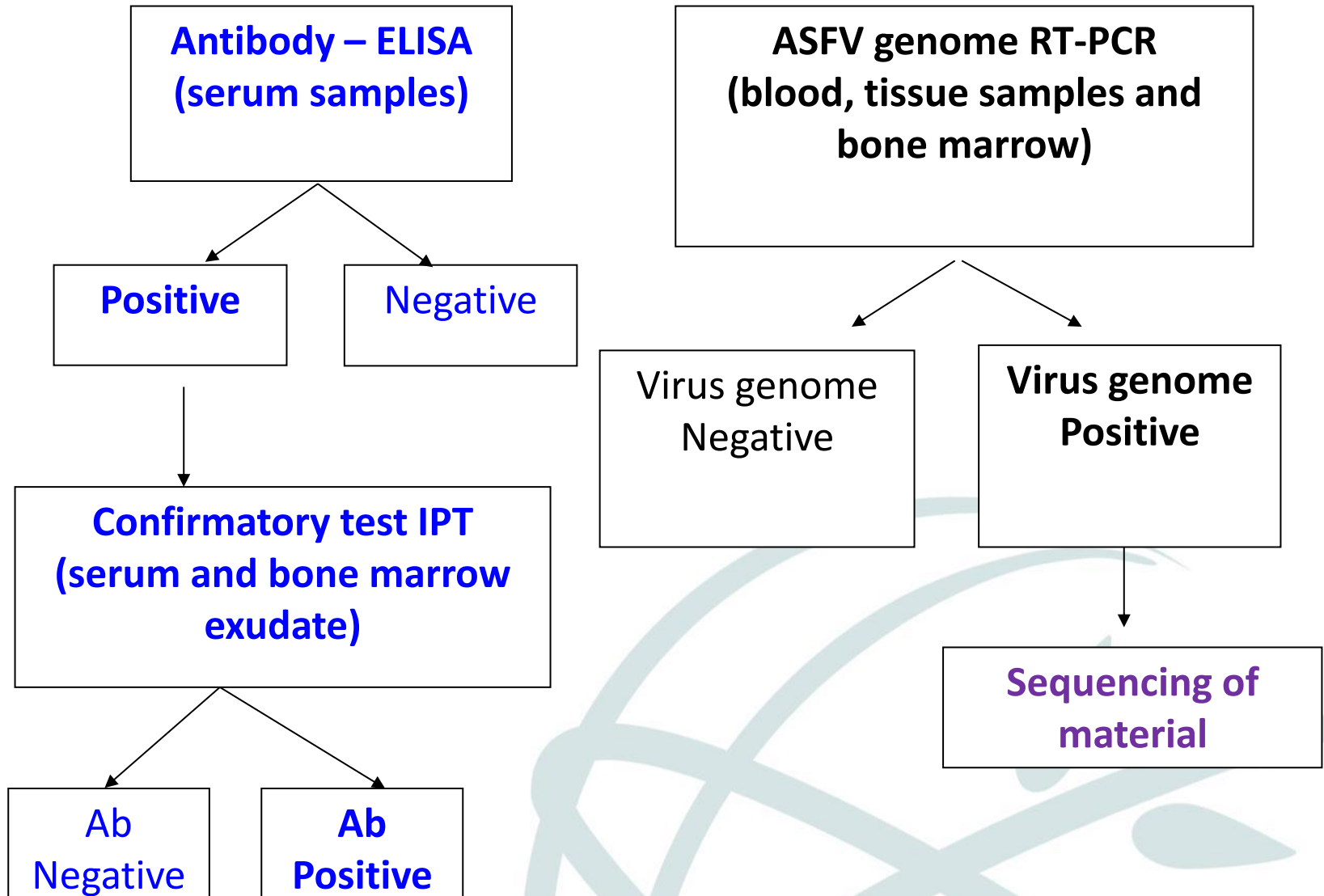
Preparation of tissue suspension and blood sample to testing is a time-consuming procedures

GOOD SAMPLE QUALITY = RAPID & CORRECT DIAGNOSIS





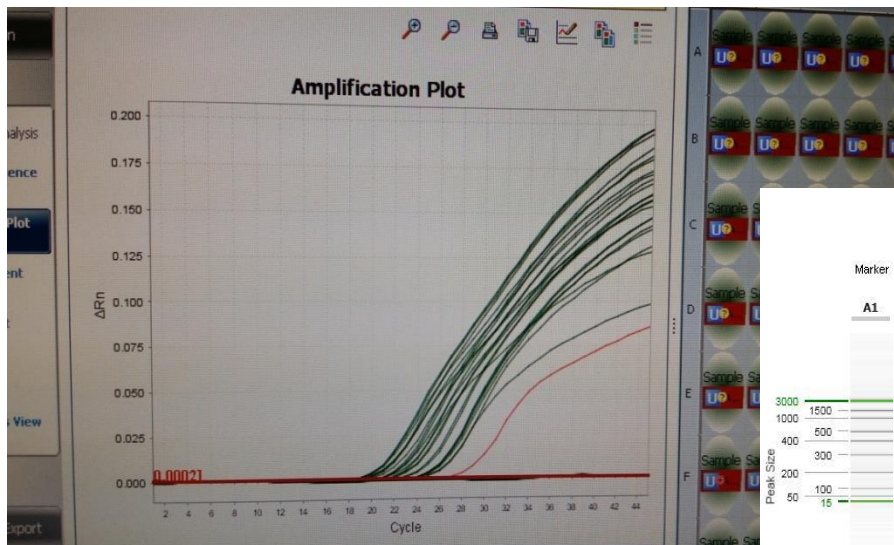
ASF DIAGNOSTIC SCHEME





ASF VIRUS DETECTION METHODS

- SOP/CISA/ASF/PCR/3/, 2014, “Detection of African swine fever virus (ASFV) by real-time PCR using Universal probe library (UPL)”. **Fernández-Pinero, J.** (2013). Molecular diagnosis of African swine fever (ASF) by a new real-time PCR using Universal Probe Library (UPL). *Transbound Emerg. Dis.*, 60: 48-58
- SOP/CISA/ASF/GENOTYPING/1, Rev.2013, “Detection of ASF virus isolates”. **Gallardo et al.**, 2009, Enhanced discrimination of African swine fever virus isolates through nucleotide sequencing of the p54, p72, and pB602L (CVR) genes. *Virus genes*, Feb: 38(1):85-95



M5: Alignment Explorer (asf_aligned.mas)

Data Edit Search Alignment Web Sequencer Display Help

DNA Sequences Translated Protein Sequences

Species/Abbrv	1	2	3	4	5	6
1. asf 43895/6	ATTTTCTGTTTCATCCTAATCTTCATGCTCAAAGTCCGTATACTTGTGCA-----GATACCAATGTAGACACTTGTG	ATTTTCTGTTTCATCCTAATCTTCATGCTCAAAGTCCGTATACTTGTGCA-----GATACCAATGTAGACACTTGTG	ATTTTCTGTTTCATCCTAATCTTCATGCTCAAAGTCCGTATACTTGTGCA-----GATACCAATGTAGACACTTGTG	ATTTTCTGTTTCATCCTAATCTTCATGCTCAAAGTCCGTATACTTGTGCA-----GATACCAATGTAGACACTTGTG	ATTTTCTGTTTCATCCTAATCTTCATGCTCAAAGTCCGTATACTTGTGCA-----GATACCAATGTAGACACTTGTG	ATTTTCTGTTTCATCCTAATCTTCATGCTCAAAGTCCGTATACTTGTGCA-----GATACCAATGTAGACACTTGTG
2. asf 42919/4	ATTTTCTGTTTCATCCTAATCTTCATGCTCAAAGTCCGTATACTTGTGCA-----GATACCAATGTAGACACTTGTG	ATTTTCTGTTTCATCCTAATCTTCATGCTCAAAGTCCGTATACTTGTGCA-----GATACCAATGTAGACACTTGTG	ATTTTCTGTTTCATCCTAATCTTCATGCTCAAAGTCCGTATACTTGTGCA-----GATACCAATGTAGACACTTGTG	ATTTTCTGTTTCATCCTAATCTTCATGCTCAAAGTCCGTATACTTGTGCA-----GATACCAATGTAGACACTTGTG	ATTTTCTGTTTCATCCTAATCTTCATGCTCAAAGTCCGTATACTTGTGCA-----GATACCAATGTAGACACTTGTG	ATTTTCTGTTTCATCCTAATCTTCATGCTCAAAGTCCGTATACTTGTGCA-----GATACCAATGTAGACACTTGTG
3. asf 44241	ATTTTCTGTTTCATCCTAATCTTCATGCTCAAAGTCCGTATACTTGTGCA-----GATACCAATGTAGACACTTGTG	ATTTTCTGTTTCATCCTAATCTTCATGCTCAAAGTCCGTATACTTGTGCA-----GATACCAATGTAGACACTTGTG	ATTTTCTGTTTCATCCTAATCTTCATGCTCAAAGTCCGTATACTTGTGCA-----GATACCAATGTAGACACTTGTG	ATTTTCTGTTTCATCCTAATCTTCATGCTCAAAGTCCGTATACTTGTGCA-----GATACCAATGTAGACACTTGTG	ATTTTCTGTTTCATCCTAATCTTCATGCTCAAAGTCCGTATACTTGTGCA-----GATACCAATGTAGACACTTGTG	ATTTTCTGTTTCATCCTAATCTTCATGCTCAAAGTCCGTATACTTGTGCA-----GATACCAATGTAGACACTTGTG
4. asf 42606/2	ATTTTCTGTTTCATCCTAATCTTCATGCTCAAAGTCCGTATACTTGTGCA-----GATACCAATGTAGACACTTGTG	ATTTTCTGTTTCATCCTAATCTTCATGCTCAAAGTCCGTATACTTGTGCA-----GATACCAATGTAGACACTTGTG	ATTTTCTGTTTCATCCTAATCTTCATGCTCAAAGTCCGTATACTTGTGCA-----GATACCAATGTAGACACTTGTG	ATTTTCTGTTTCATCCTAATCTTCATGCTCAAAGTCCGTATACTTGTGCA-----GATACCAATGTAGACACTTGTG	ATTTTCTGTTTCATCCTAATCTTCATGCTCAAAGTCCGTATACTTGTGCA-----GATACCAATGTAGACACTTGTG	ATTTTCTGTTTCATCCTAATCTTCATGCTCAAAGTCCGTATACTTGTGCA-----GATACCAATGTAGACACTTGTG
5. asf 39528	ATTTTCTGTTTCATCCTAATCTTCATGCTCAAAGTCCGTATACTTGTGCA-----GATACCAATGTAGACACTTGTG	ATTTTCTGTTTCATCCTAATCTTCATGCTCAAAGTCCGTATACTTGTGCA-----GATACCAATGTAGACACTTGTG	ATTTTCTGTTTCATCCTAATCTTCATGCTCAAAGTCCGTATACTTGTGCA-----GATACCAATGTAGACACTTGTG	ATTTTCTGTTTCATCCTAATCTTCATGCTCAAAGTCCGTATACTTGTGCA-----GATACCAATGTAGACACTTGTG	ATTTTCTGTTTCATCCTAATCTTCATGCTCAAAGTCCGTATACTTGTGCA-----GATACCAATGTAGACACTTGTG	ATTTTCTGTTTCATCCTAATCTTCATGCTCAAAGTCCGTATACTTGTGCA-----GATACCAATGTAGACACTTGTG
6. asf 51741/2	ATTTTCTGTTTCATCCTAATCTTCATGCTCAAAGTCCGTATACTTGTGCA-----GATACCAATGTAGACACTTGTG	ATTTTCTGTTTCATCCTAATCTTCATGCTCAAAGTCCGTATACTTGTGCA-----GATACCAATGTAGACACTTGTG	ATTTTCTGTTTCATCCTAATCTTCATGCTCAAAGTCCGTATACTTGTGCA-----GATACCAATGTAGACACTTGTG	ATTTTCTGTTTCATCCTAATCTTCATGCTCAAAGTCCGTATACTTGTGCA-----GATACCAATGTAGACACTTGTG	ATTTTCTGTTTCATCCTAATCTTCATGCTCAAAGTCCGTATACTTGTGCA-----GATACCAATGTAGACACTTGTG	ATTTTCTGTTTCATCCTAATCTTCATGCTCAAAGTCCGTATACTTGTGCA-----GATACCAATGTAGACACTTGTG





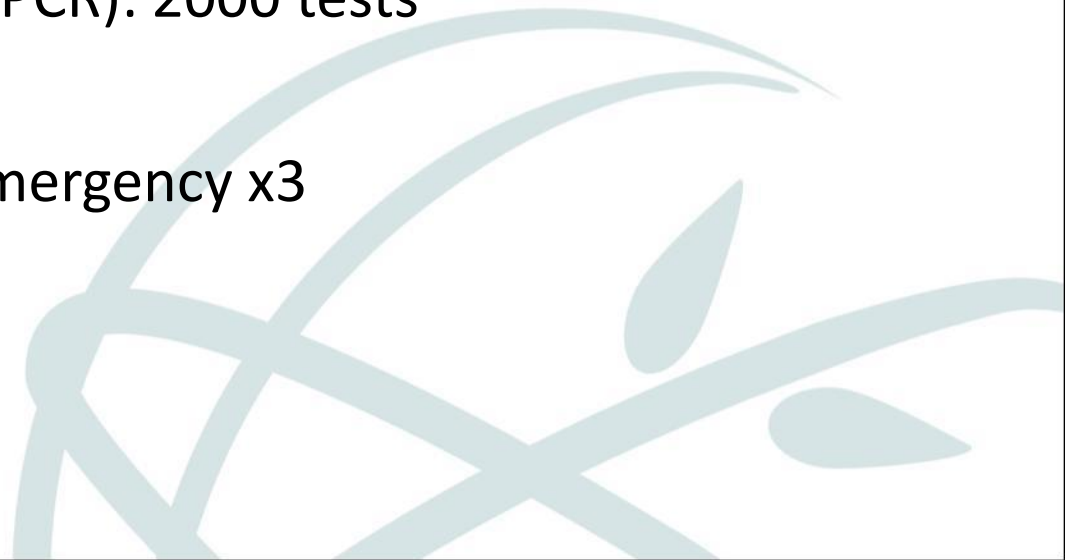
Food and
Veterinary Service
Republic of Latvia

LABORATORY CAPACITY

Capacity of the national African Swine Fever laboratory is (on a weekly basis):

- Antibodies (ELISA): 2000 tests
- Antibodies (IPT): 750 tests
- Virus genome (PCR): 2000 tests

in the case of emergency x3





Food and
Veterinary Service
Republic of Latvia

Risk communication

How to make everybody involved?

- Legislation (National and European)
- Contingency plan
- Funding should be foreseen for activities carried out
- Regular training and awareness campaigns
- Communication and collaboration between institutions (also in peace time)
- Veterinarians , hunters and stake holders



Food and
Veterinary Service
Republic of Latvia

Thank you for your attention!