



GF-TADs

GLOBAL FRAMEWORK FOR THE
PROGRESSIVE CONTROL OF
TRANSBOUNDARY ANIMAL DISEASES



Oie

**Standing Group of Experts on Rabies
in Europe**
under the GF-TADs umbrella

1st meeting (SGE RAB1)
Brussels, 13 February 2019

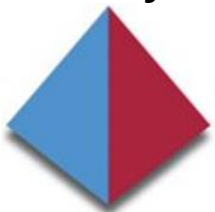
S E R B I A

Dr. Emina Milakara, Dr. Boban Đurić

Rabies epidemiology – evolution since 2016

	2016	2017	2018	2019
Total number of indigenous cases*	Fox: 4	Fox: 1	Fox: 1	0
Species / number of cases	Fox: 4	Fox: 1	Fox: 1	0
Number of cases < 50 km from a neighboring country (please detail)	4 cases <ul style="list-style-type: none"> • Carina-Osečina 1 • Bobova- Valjevo 1 • Vragočanica- Valjevo 1 • Lopatanj- Osečina 1 Bosnia and Herzegovina	1 case Tomanj- Krupanj 1 Bosnia and Herzegovina	1 case Krupanj- Krupanj 1 Bosnia and Herzegovina	0

* *If no case since 2016, date of the last indigenous case:*



Rabies monitoring / surveillance since 2016

	2016	2017	2018	2019
Total number of FATS ⁽¹⁾ performed on indicator animals ⁽²⁾	1031	1567	1489	Ongoing
Species	<ul style="list-style-type: none"> - FOX -859 - SHAKAL- 149 - MARTEN -18 - WOLF – 1 - WILD CAT -2 	<ul style="list-style-type: none"> - FOX -1246 - SHAKAL - 246 - MARTEN - 40 - WOLF – 3 - WILD CAT -15 	<ul style="list-style-type: none"> - FOX - 1134 - SHAKAL -305 - MARTEN - 23 - WOLF -3 - WILD CAT -24 	
Total number of biomarker tests and ELISA tests performed in hunted animals	743/247 72%/23%	1107/416 70%/ 26%	908/271 60 %/18 %	

1) FATS = fluorescent antibody test ;

2) Indicator animals = animals that show clinical signs or abnormal behavior suggestive of rabies, animals found dead, road kills and animals involved in human exposure

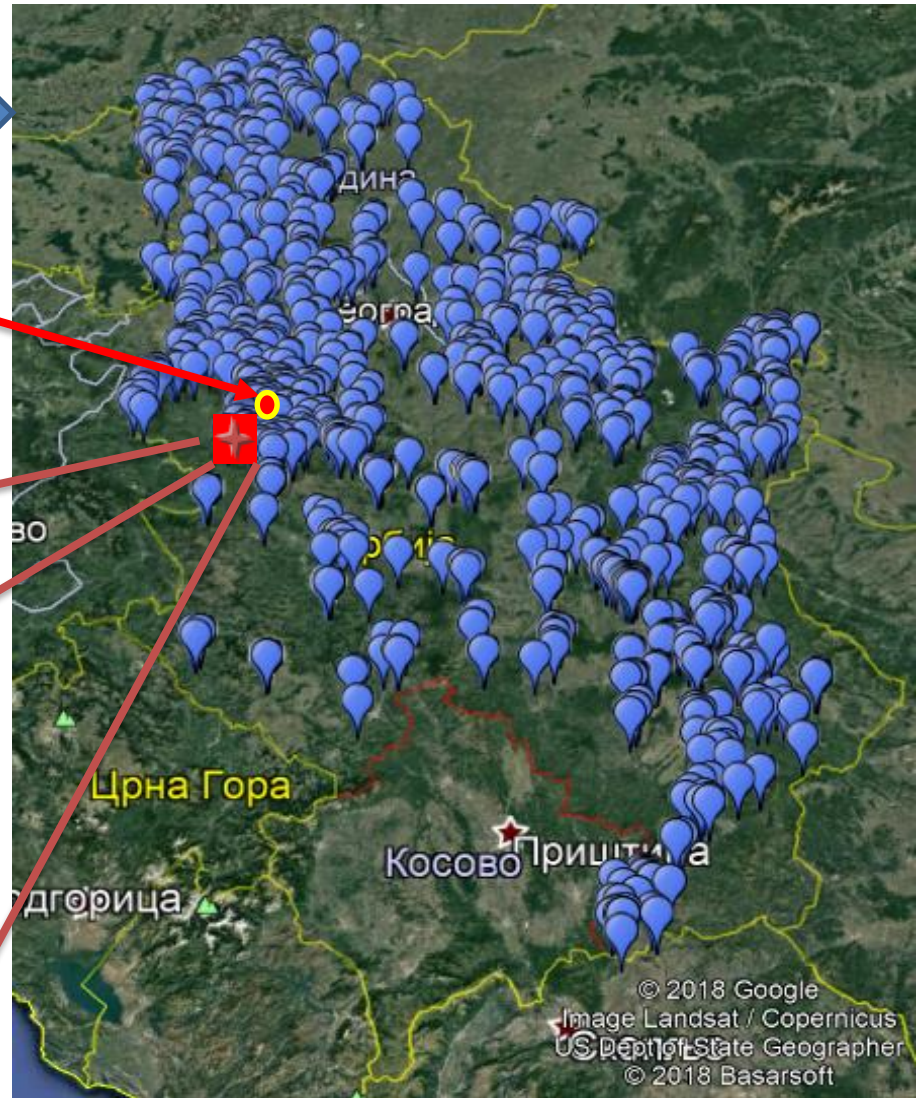
Map of Rabies cases

Post-vaccination
monitoring map 2018

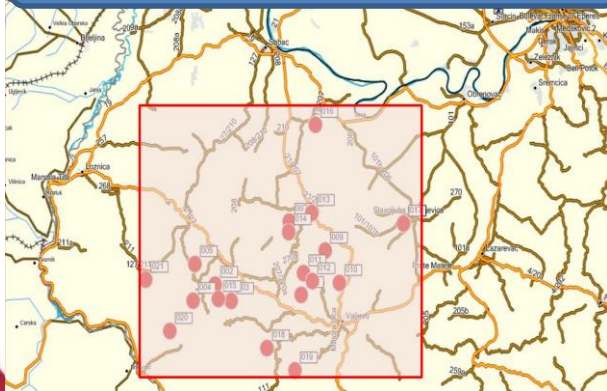


&
1 positive case in 2018

(close to the border with BIH)

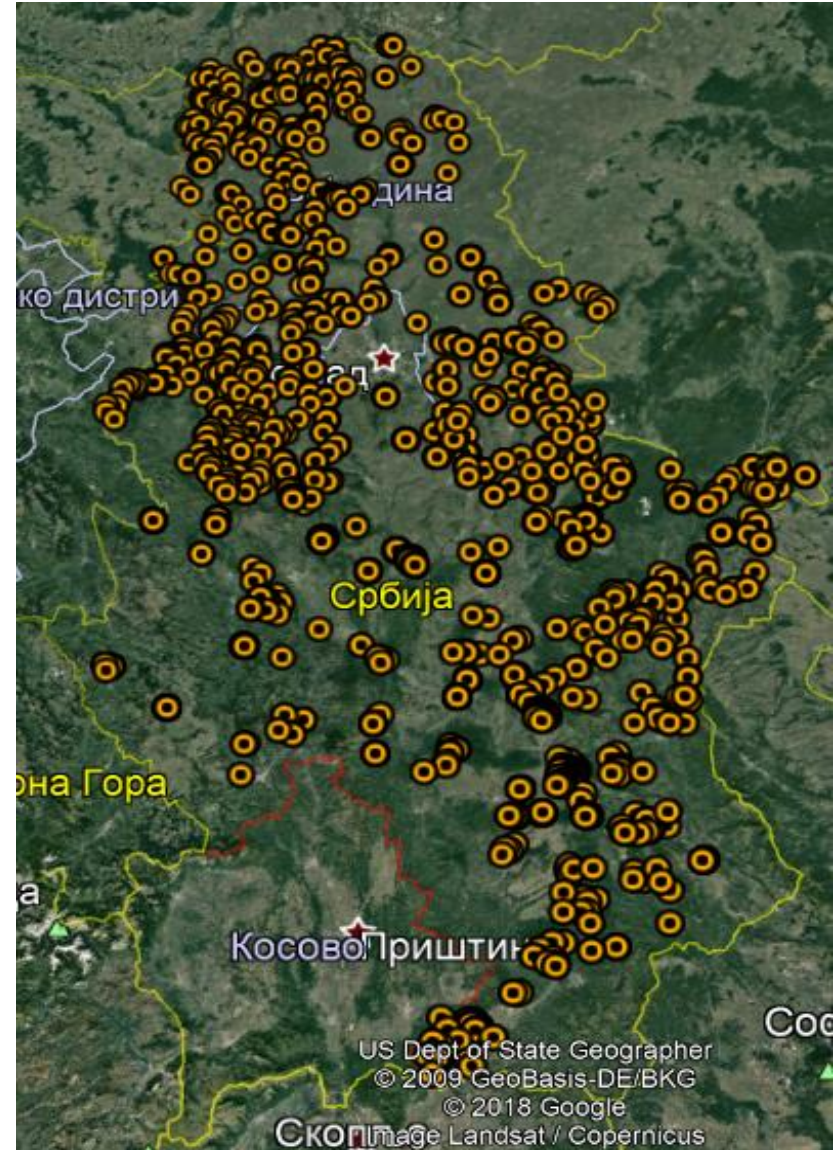
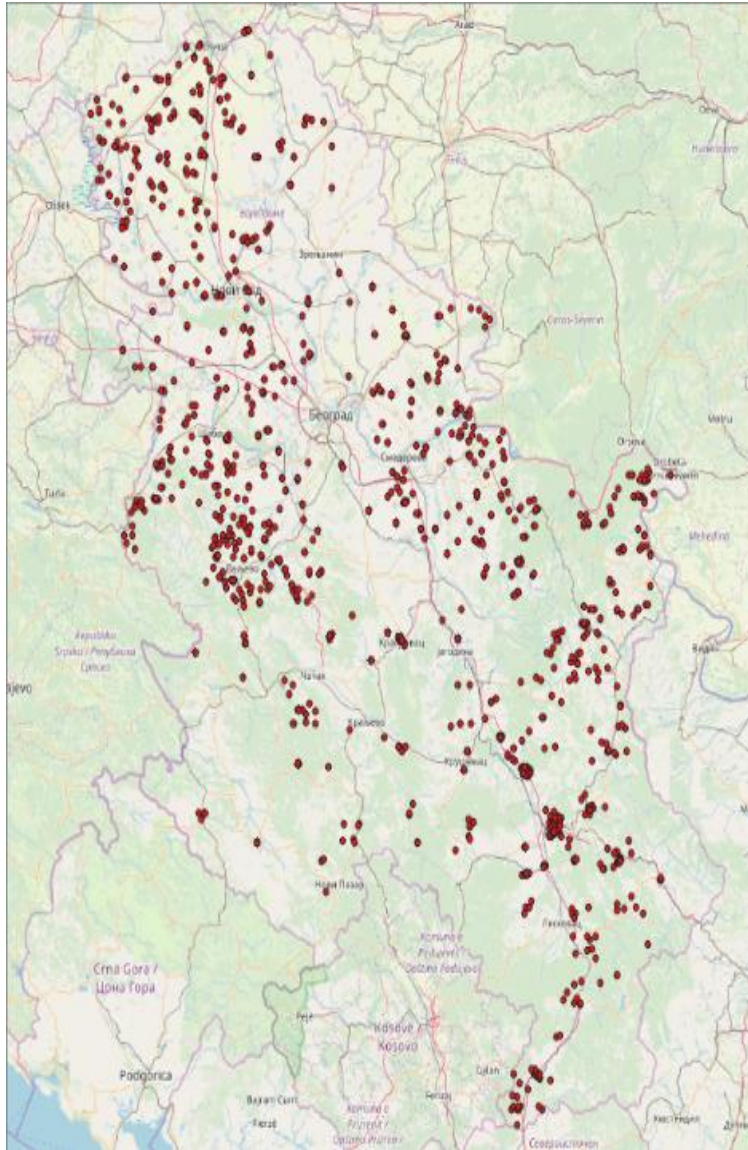


**GEOPOSITION OF RABIES CASES
2011-2018**

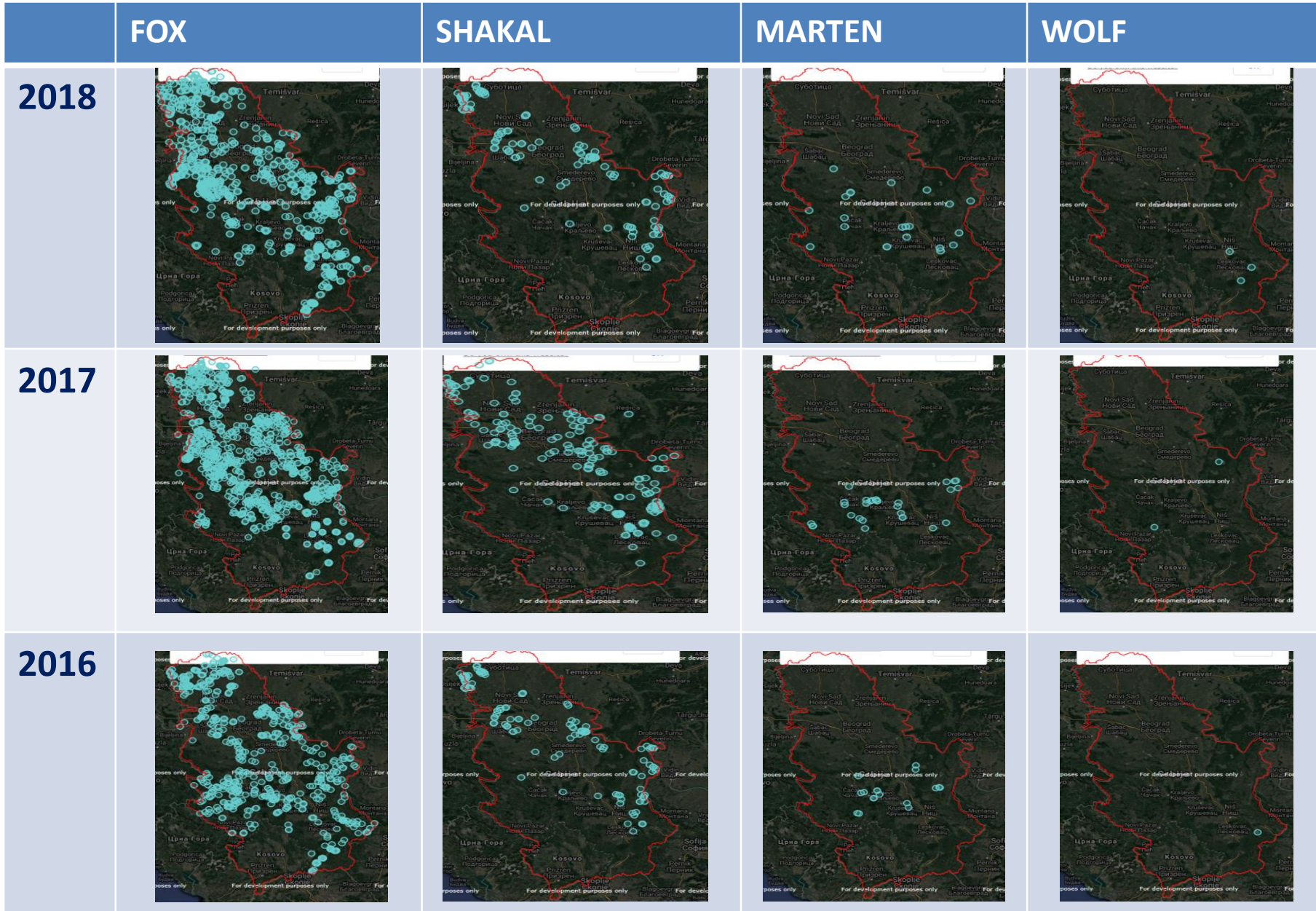


Standing Group of Experts on Rabies in Europe under the GF-TADs umbrella

Monitoring 2018



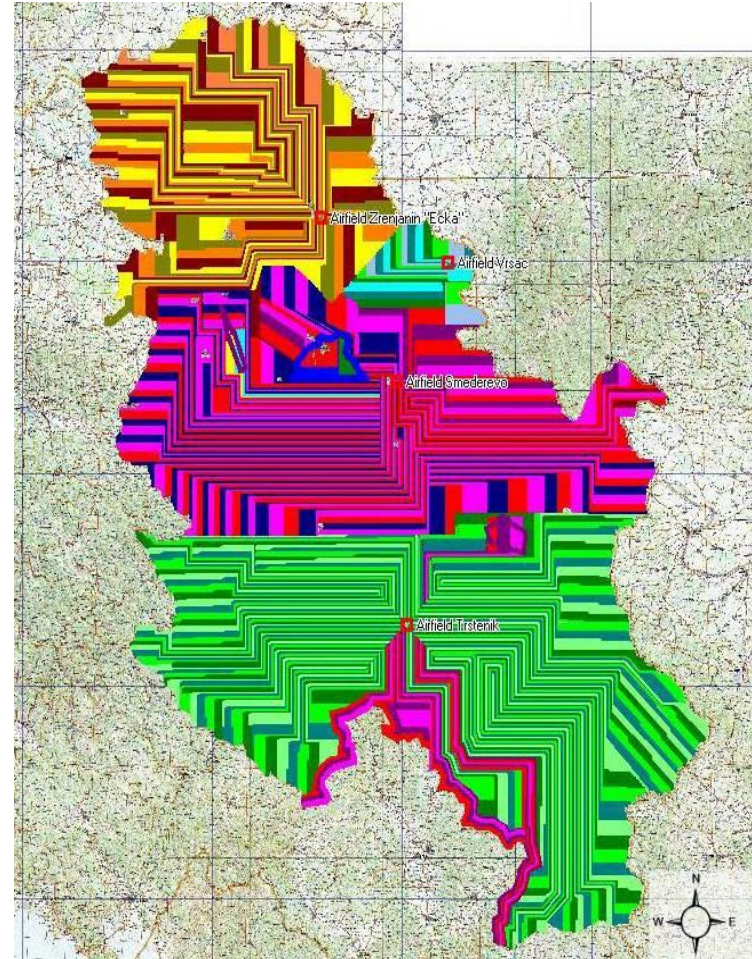
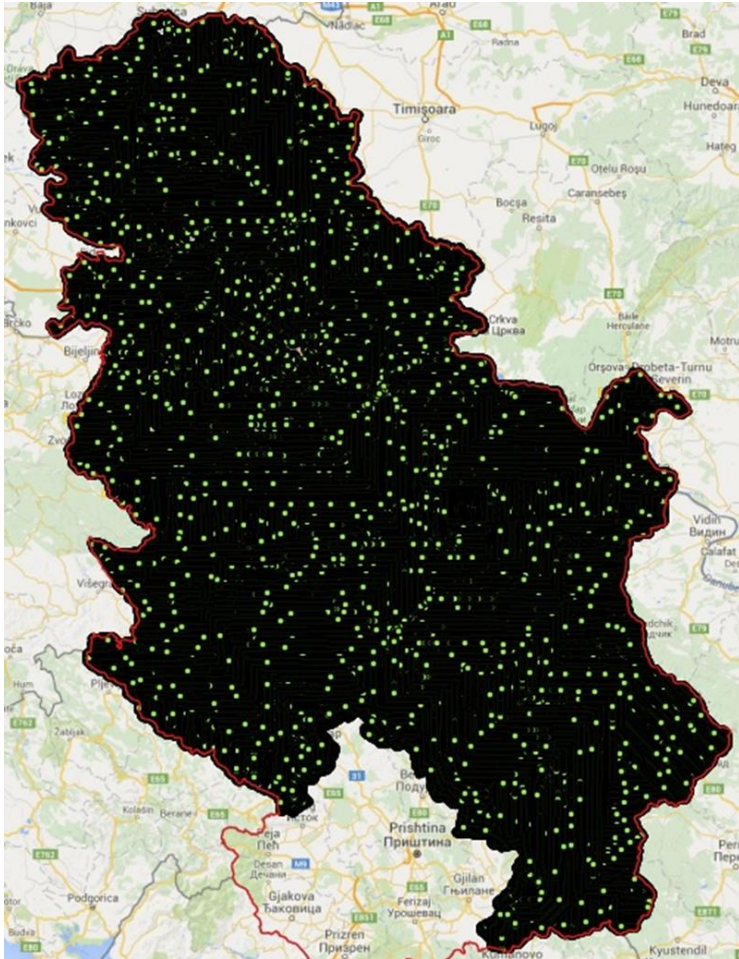
MONITORING 2016 -2018



Rabies oral vaccination campaigns since 2016

	2016	2017	2018
Spring campaign	<p>Dates:</p> <p><input checked="" type="checkbox"/> Whole country</p> <p><input type="checkbox"/> Parts of country and area vaccinated</p> <p>(km²): app 75000 km²</p>	<p>Dates:</p> <p><input checked="" type="checkbox"/> Whole country</p> <p><input type="checkbox"/> Parts of country and area vaccinated</p> <p>(km²): app 75000 km²</p>	<p>Dates:</p> <p><input checked="" type="checkbox"/> Whole country</p> <p><input type="checkbox"/> Parts of country and area vaccinated</p> <p>(km²): app 75000 km²</p>
Fall campaign	<p>Dates:</p> <p><input checked="" type="checkbox"/> Whole country</p> <p><input type="checkbox"/> Parts of country and area vaccinated</p> <p>(km²): app 75000 km²</p>	<p>Dates:</p> <p><input type="checkbox"/> Whole country</p> <p><input type="checkbox"/> Parts of country and area vaccinated</p> <p>(km²):</p>	<p>Dates:</p> <p><input checked="" type="checkbox"/> Whole country</p> <p><input type="checkbox"/> Parts of country and area vaccinated</p> <p>(km²): app 75000 km²</p>
Oral vaccin used (Raboral, Rabigen, Fuchsoral, Lysvulpen , or Other – please detail)	<p>Vaccine: Lysvulpen</p> <p>Bait density: 22 baits/1 km²</p>	<p>Vaccine: Lysvulpen</p> <p>Bait density: 22 baits/1 km²</p>	<p>Vaccine: Lysvulpen</p> <p>Bait density: 22 baits/1 km² 25 baits/1 km² - in high area with rabies cases</p>

Map of Vaccination areas



Standing Group of Experts on Rabies in Europe under the GF-TADs umbrella

Specific Plans for 2019

	Spring campaign	Fall campaign
Dates - At national level	- April/May	<i>New Tender procedure to be initiated</i>
And specifically at - border with... - Border with... - Border with...	- BIH - Severna Makedonija - Montenegro - Territory of Kosovo*	- BIH - Severna Makedonija - Montenegro - Territory of Kosovo*
Covered territory	Whole country	Whole country
Oral vaccine used	Lysvulpen, Bioveta CZ	<i>Tender award related</i>
Particular needs	25 baits/km ² in 2 districts with rabies cases	25 baits/km ² in 2-3 districts



Specific Plans for 2020 and 2021

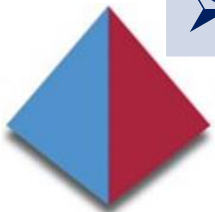
	Spring campaign	Fall campaign
Dates		
- At national level	- April/May	- October/November
And specifically at		
- border with...	- <i>...To be decided after evaluation of 2019 campaigns and neighboring countries situation/data</i>	- <i>To be decided after evaluation 2019 campaigns and neighboring countries situation/data</i>
- Border with...		
- Border with...		
Covered territory	Whole country	Whole country
Oral vaccine used	Tender award related	Tender award related
Particular needs	Evaluation conclusions related	



Mid-term Plans 2022 and beyond

Depending on rabies surveillance & monitoring data and epidemiology situation in the neighboring countries

- Cancellation of oral rabies vaccination of the entire country;
- Progressive control and eradication measures including vaccination in the:
 - ✓ **“high risk areas” with positive cases**
 - ✓ **border belt territory**
- On-the-spot monitoring/control of ORV (airports, storage..)
- Improving of post-vaccination monitoring programme
- Enhancing surveillance programme
- Public awareness campaign



Conclusions and challenges

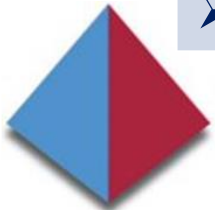
Regional level

Coordination with the neighboring countries/territories

- ✓ *Long term planning (borders!)*
- ✓ *Funding & Procurement*
- ✓ *Quality of vaccines*

Country level

- Proper planning of the Rabies control & eradication program
- Vaccination campaigns/program
 - ✓ *Design, implementation, funding*
 - ✓ *Vaccination area*
 - ✓ *Duration and timing*
 - ✓ ***On-the-spot monitoring of campaigns – important!***
- Public information and awareness raising
- Strong post-vaccination monitoring (No of samples ?) – **important!**
- Surveillance program (No of samples ?) – **important!**
- **Annual evaluation and update of Rabies control & eradication program**



THANK YOU



Standing Group of Experts on Rabies in Europe under the GF-TADs umbrella