

# *Epidemic Situation on ASF in Russia*

---



---

*Nikita Lebedev, Adviser to the Head  
Federal Service for Veterinary and Phytosanitary Surveillance*

*Chisinau, September 2017*

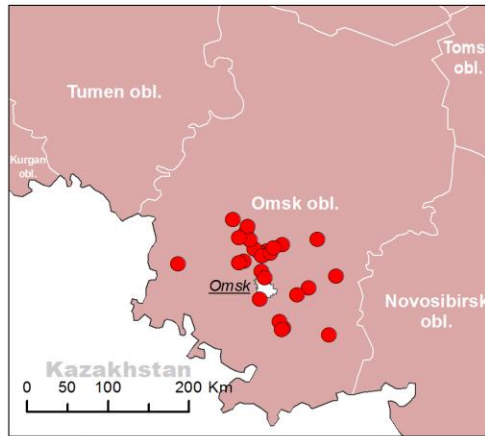


# ASF epidemic situation in the Russian Federation in 2017

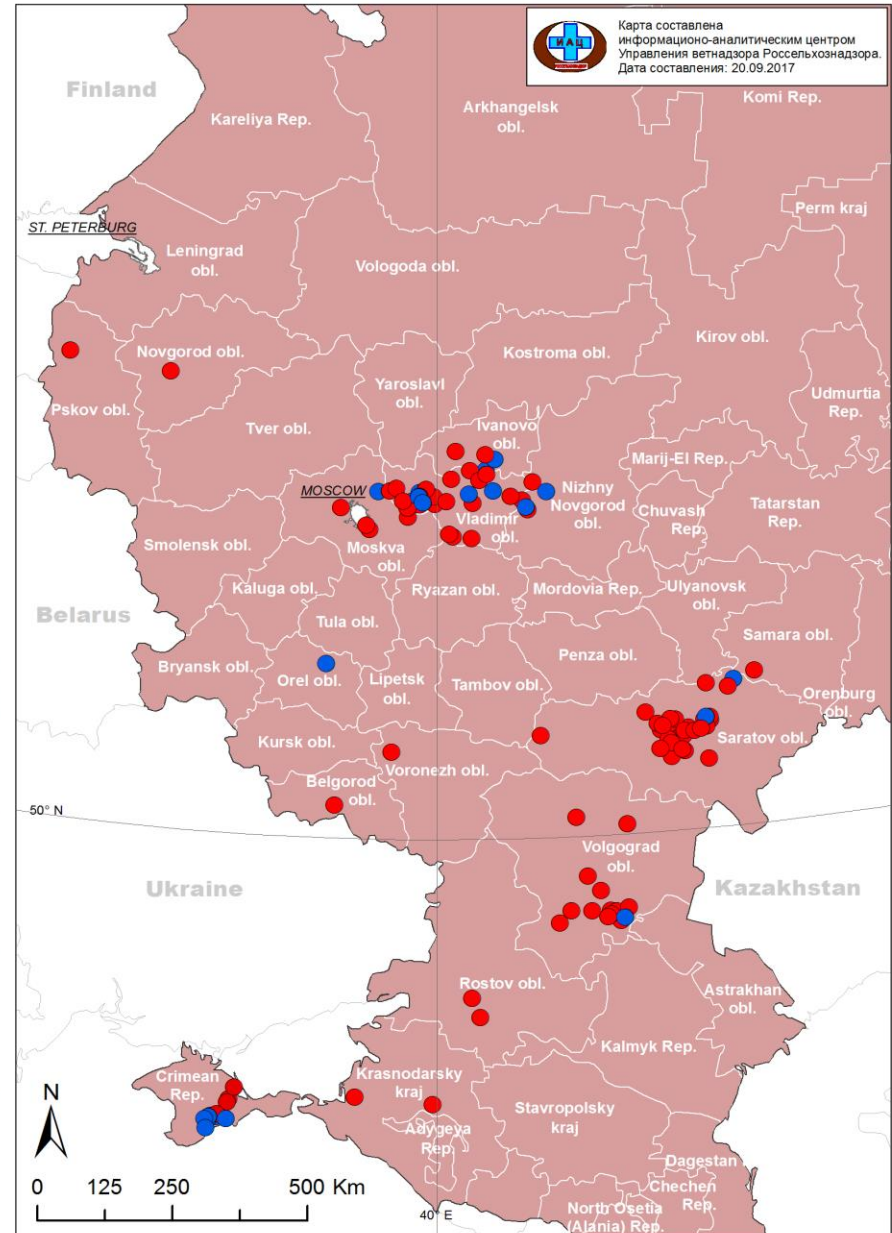
(N = 145; OIE data as of 20.09.2017)



- |   |   |
|---|---|
| <b>Belgorod obl.:</b><br>livestock - 1<br>wild - no       | <b>Novgorod obl.:</b><br>livestock - 1<br>wild - no |
| <b>Vladimir obl.:</b><br>livestock - 19<br>wild - 6       | <b>Omsk obl.:</b><br>livestock - 26<br>wild - no    |
| <b>Volgograd obl.:</b><br>livestock - 15<br>wild - 1      | <b>Orel obl.:</b><br>livestock - no<br>wild - 1     |
| <b>Ivanovo obl.:</b><br>livestock - 3<br>wild - 2         | <b>Pskov obl.:</b><br>livestock - 1<br>wild - no    |
| <b>Irkutsk obl.:</b><br>livestock - 1<br>wild - no        | <b>Resp. Crimea:</b><br>livestock - 5<br>wild - 7   |
| <b>Krasnodar kraj:</b><br>livestock - 2<br>wild - no      | <b>Rostov obl.:</b><br>livestock - 2<br>wild - no   |
| <b>Moscow obl.:</b><br>livestock - 4<br>wild - 1          | <b>Samara obl.:</b><br>livestock - 1<br>wild - no   |
| <b>Nizhny Novgorod obl.:</b><br>livestock - 2<br>wild - 2 | <b>Saratov obl.:</b><br>livestock - 38<br>wild - 3  |



- ASF outbreaks:**
- in livestock pigs (N = 122)
  - in wild boars (N = 23)

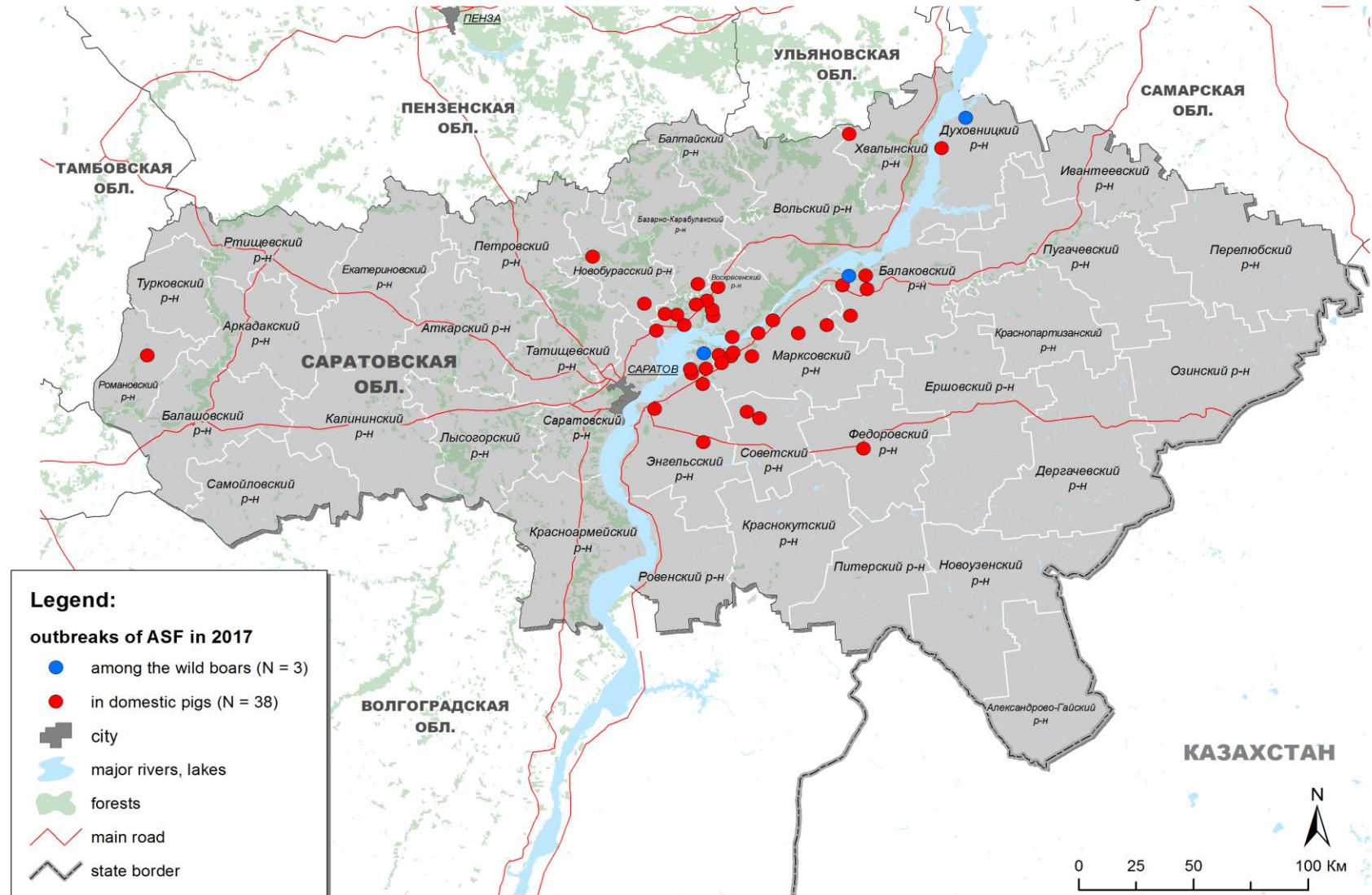


Карта составлена информационно-аналитическим центром  
Управления ветеринарии Россельхознадзора.  
Дата составления: 20.09.2017



# Outbreaks of ASF in the territory of the Saratov region, 2017

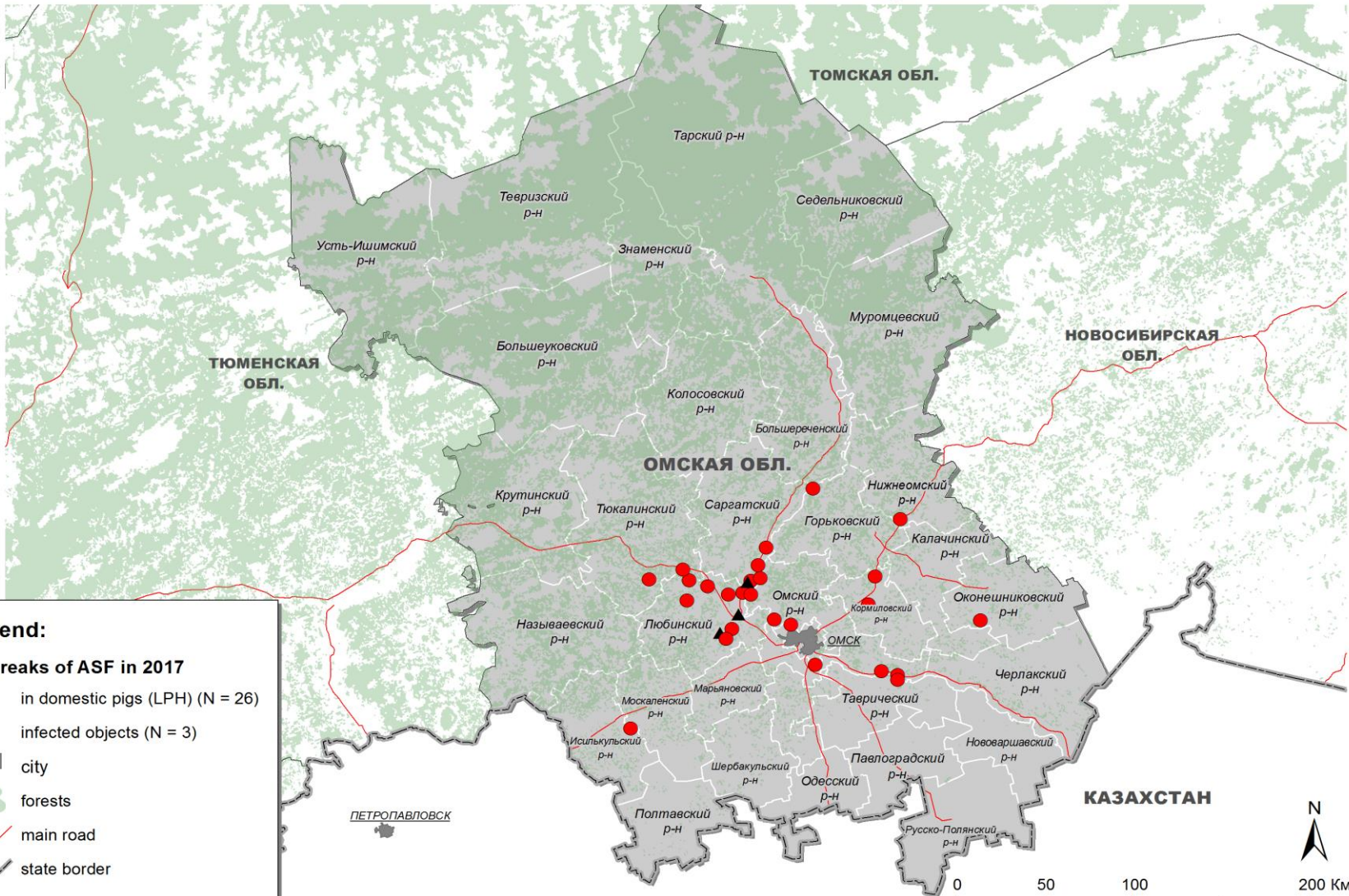
according to the OIE on 19.09.2017





# Outbreaks of ASF in the territory of Omsk region in 2017

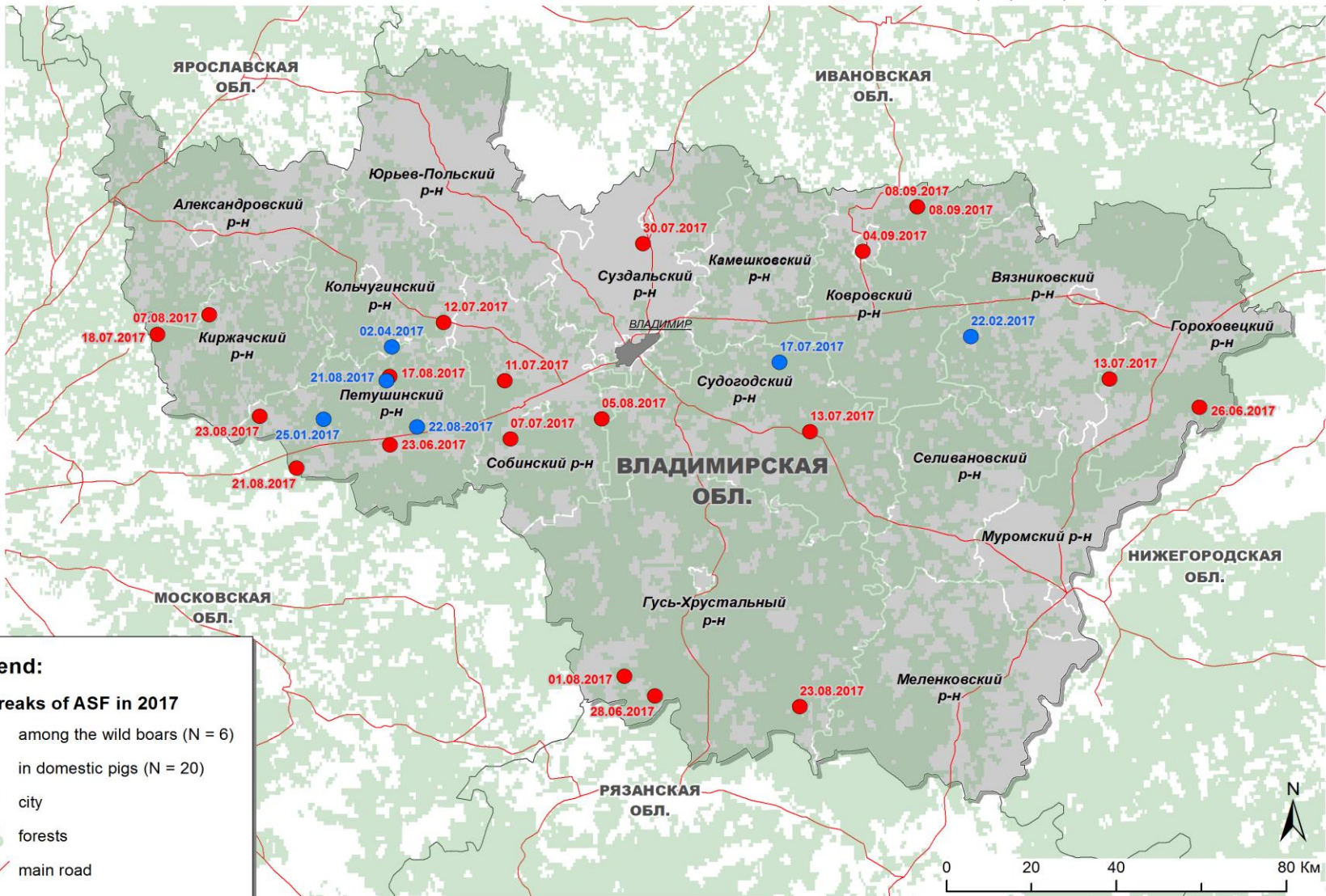
according fsbi "Center of veterinary" and OIE on 19.09.2017





# Outbreaks of ASF in the territory of the Vladimir region in 2017

по данным ФГБУ "Центр ветеринарии" и МЭБ на 19.09.2017





# Strategy for ASF control and eradication program in the RF regions include the following elements:

*early detection and laboratory confirmation of the disease*

*early identification of infected and potentially infected sites, including pig houses, cold stores*

*rapid destruction of carcasses and animal care items, disinfection*

*rapid imposition of effective quarantine in the infected and potentially infected areas*

*rapid communication about the disease and effective control to prevent the movement of pigs and pig products*

*depopulation and control of the number of wild boars*





# ASF control



## In wild animals

- **Minimization of contacts** "Wild-home swine»
- **Epidemiological:** status forest- and hunting farm in terms of epizootology
- **Targeted control of population** of wild pigs in infected and containment zones
- **Search and destruction** of carcasses
- **Entomological monitoring**



## In agrarian sector

- **Monitoring:** clinical inspection, inspection and post mortem sampling and seromonitoring, notification of cases by the owners/hunters
- **Quarantine** (maximum incubation period - 30 days), observation in infected, containment zones
- **Movement control** in infected, containment and risk zones
- **Bio security** on the pig farms (compartments)
- **Compartmentalization:** legal and epizootic status
- **Zoning** of the country's territory by the degree of threat and risk
- **Stamping-out and destruction** in the infected and containment zones
- **Cleaning and disinfection** in the outbreaks and infected settlements
- **Control of vectors** in all zones
- Sentinel animals and recovery of the industry in infected zones/regions
- **PR** of the ASF problem



**Thank you for your  
attention!**