

GF-TADs

GLOBAL FRAMEWORK FOR THE
PROGRESSIVE CONTROL OF
TRANSBOUNDARY ANIMAL DISEASES



Animal Health 'Barometer' in Europe

6th meeting of the GF-TADs for Europe Steering Committee
(RSC6)

Brussels, Belgium, 30 September – 1 October 2015

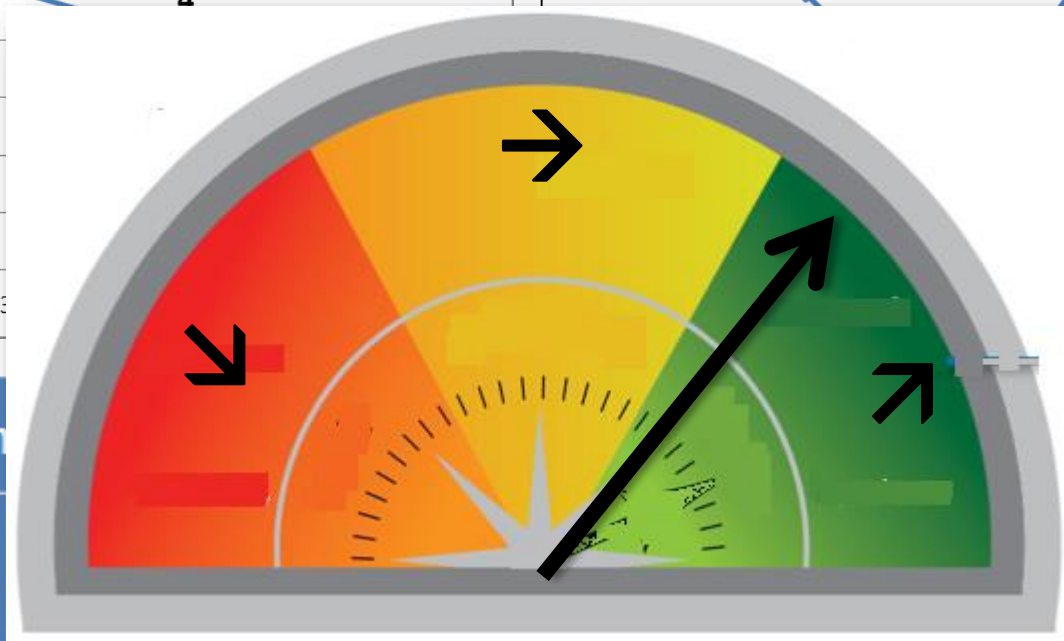
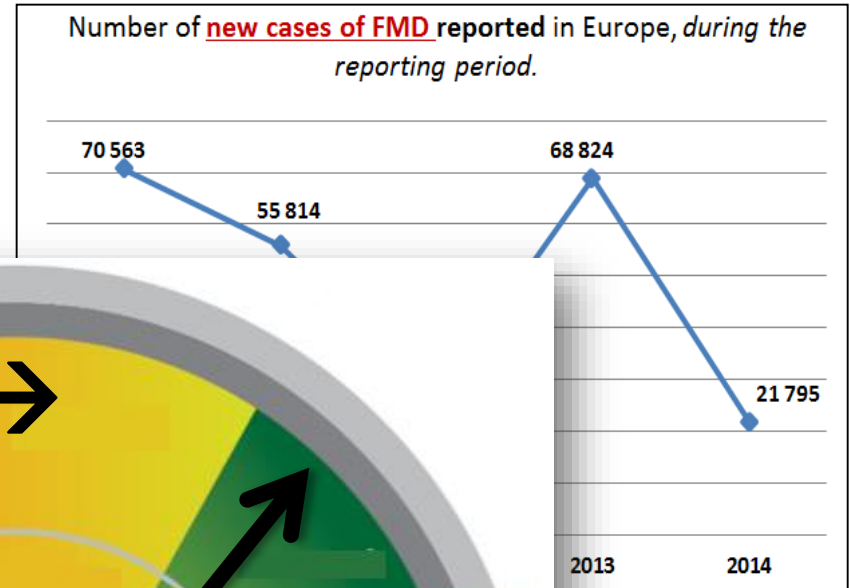
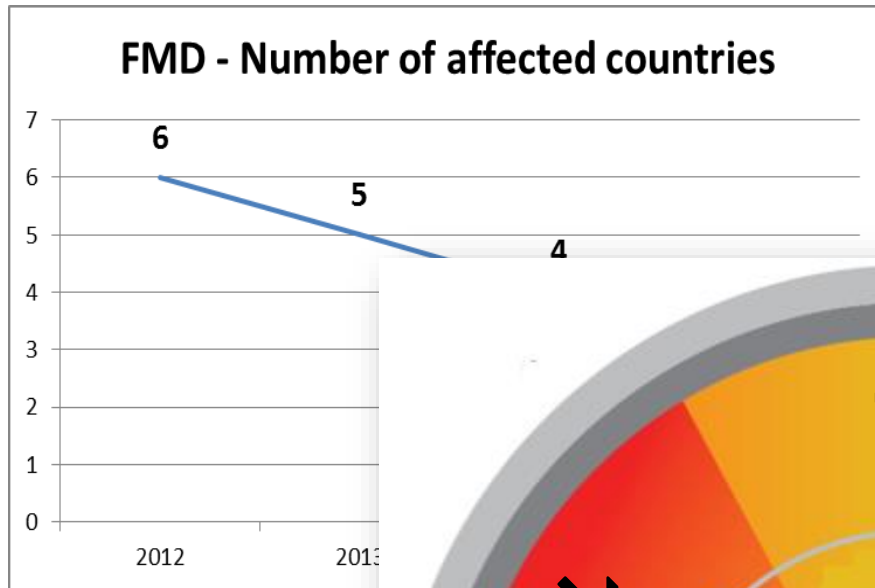
N. Leboucq

On behalf of the GF-TADs FMD Working Group

Indicators used

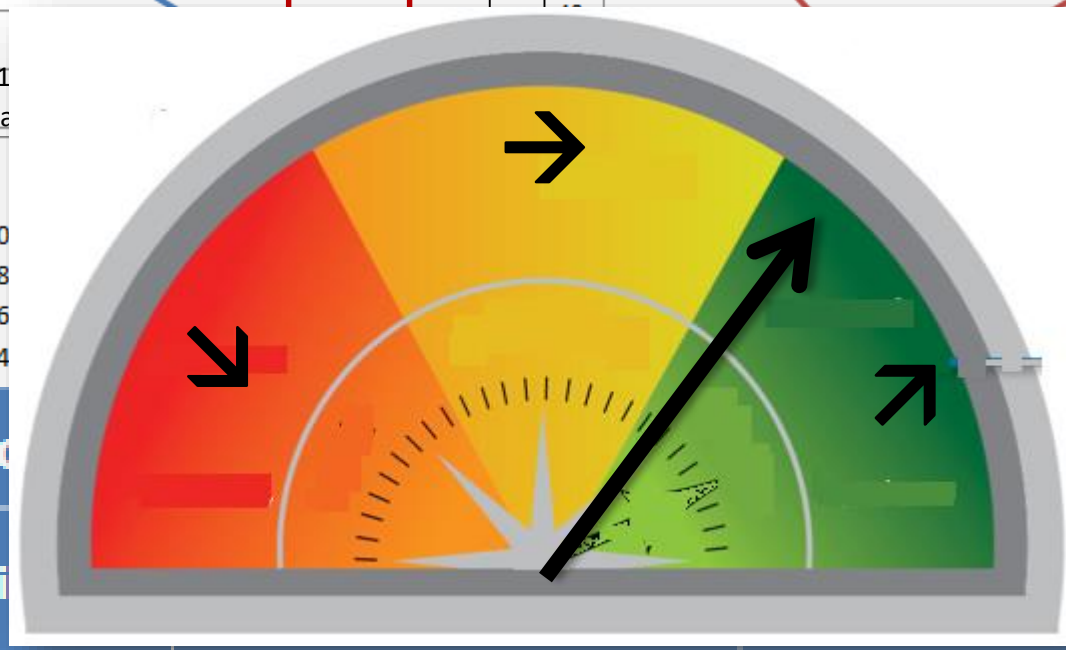
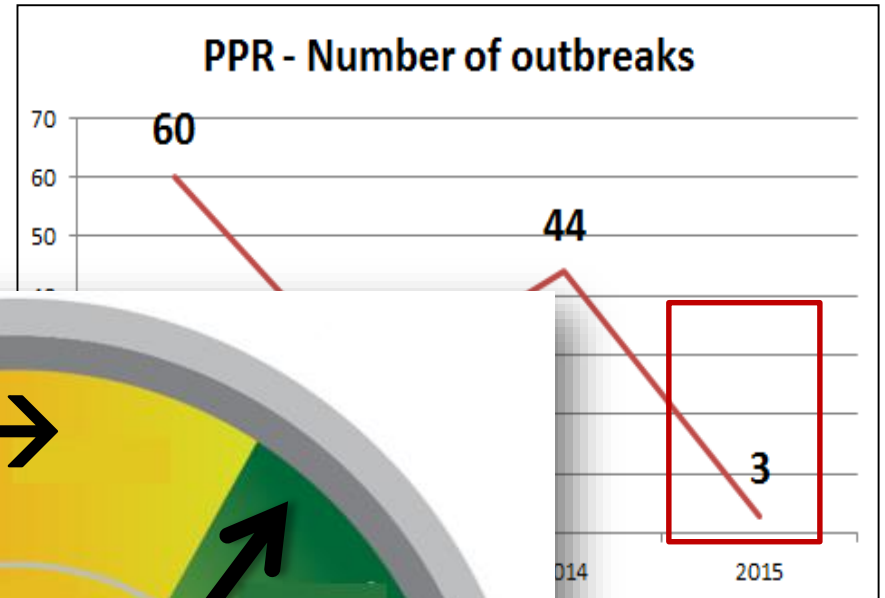
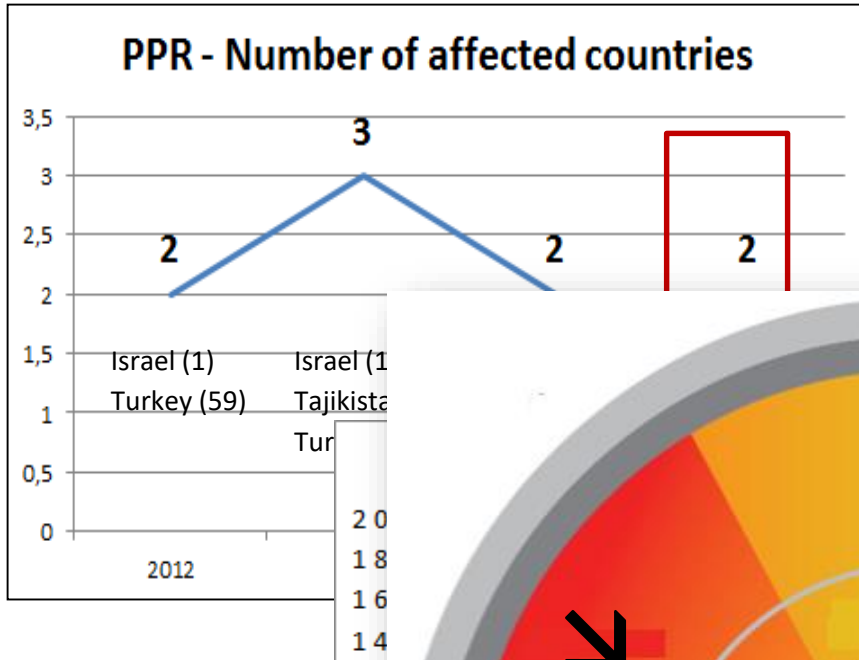
Reference Number:	1.1
Performance Indicator:	For each region's priority TADs, the number of affected countries in the current year of reporting (and comparison to historical annual data).
Reference Number:	1.2
Performance Indicator:	For the Priority TADs in each region, distribution of countries and zones by official disease status (and analysis of trends over time, as they move through the various stages that are applicable to each disease).
Reference Number:	2.1
Performance Indicator:	Number of cases reported of Priority TADs in animals and, where applicable, in humans.
Reference Number:	2.2
Performance Indicator:	Number of outbreaks reported of Priority TADs (and, where possible, their spatial distribution).
Reference Number:	2.3
Performance Indicator:	The proportion (%) of new epidemiological events for which countries met international standards for immediate notification.

FMD in Europe – indicators and trends



Free countries without Vaccination	Vaccination			Countries with endorsed Official Control Programme
39	0	2	1	0

PPR in Europe – indicators and trends



Number of countries with endorsed Programme status.

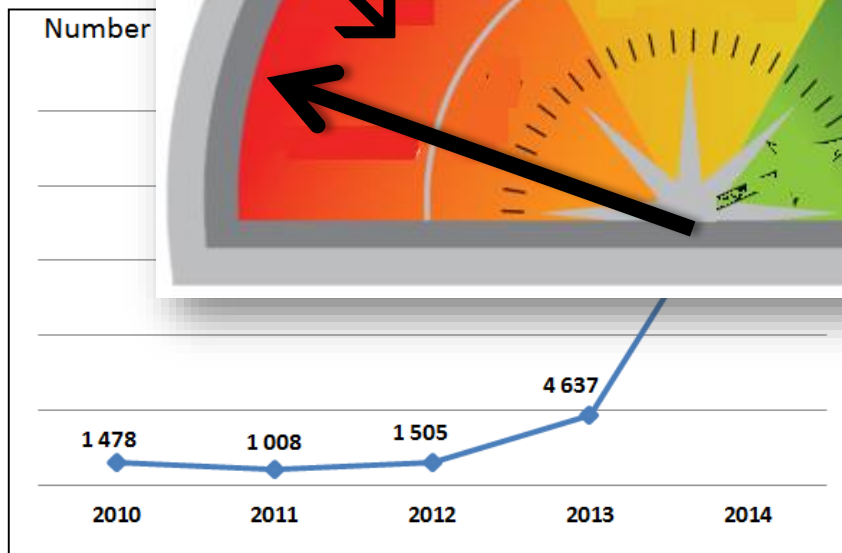
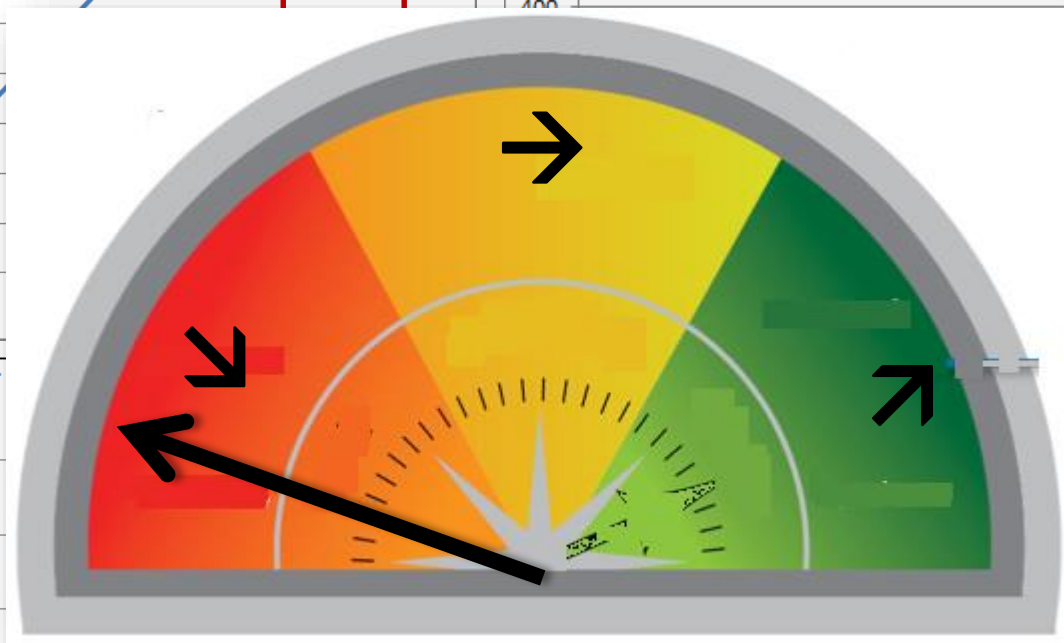
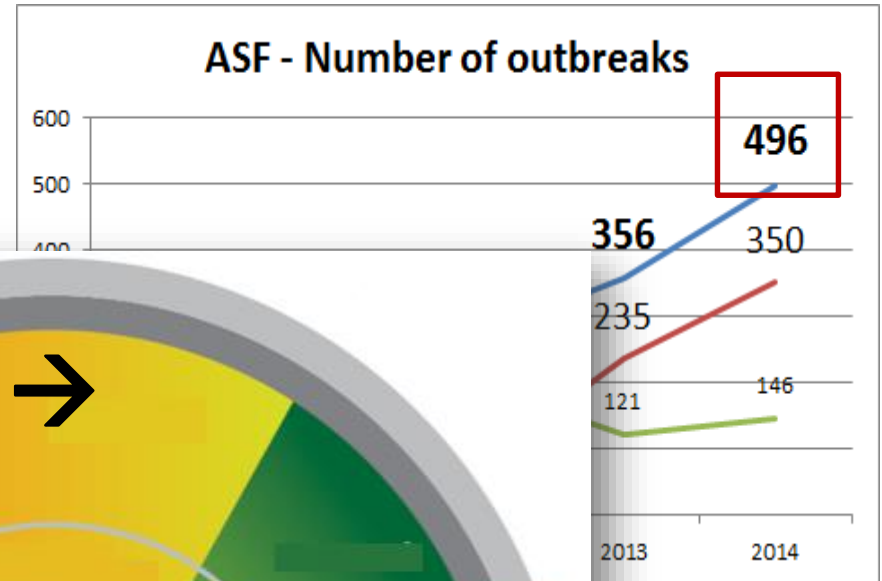
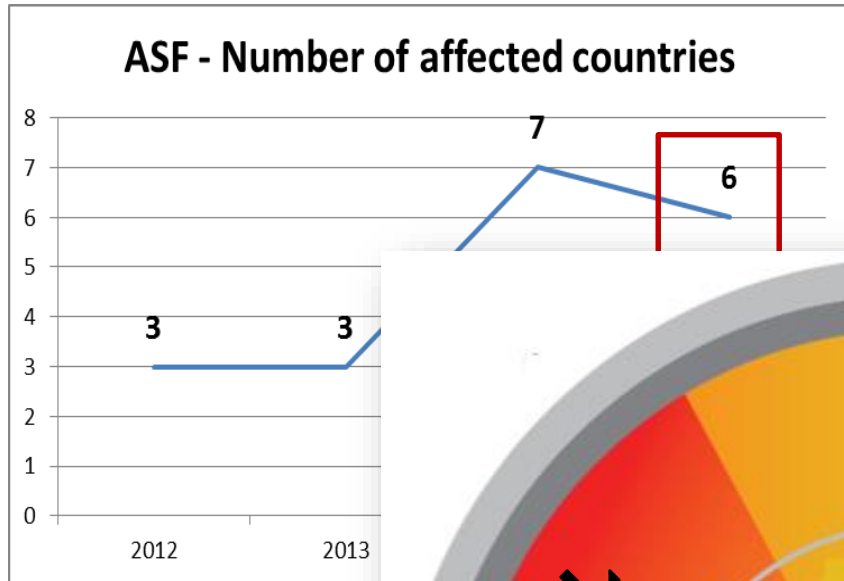
Free countries

30

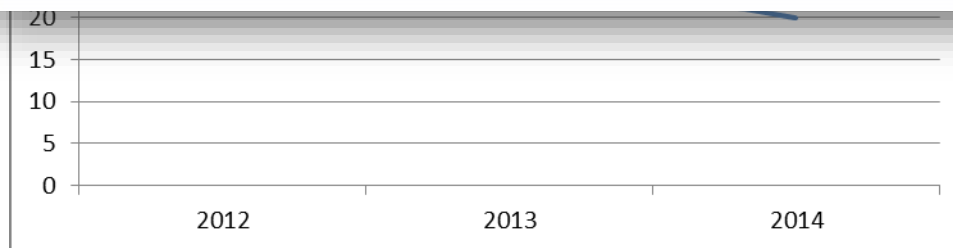
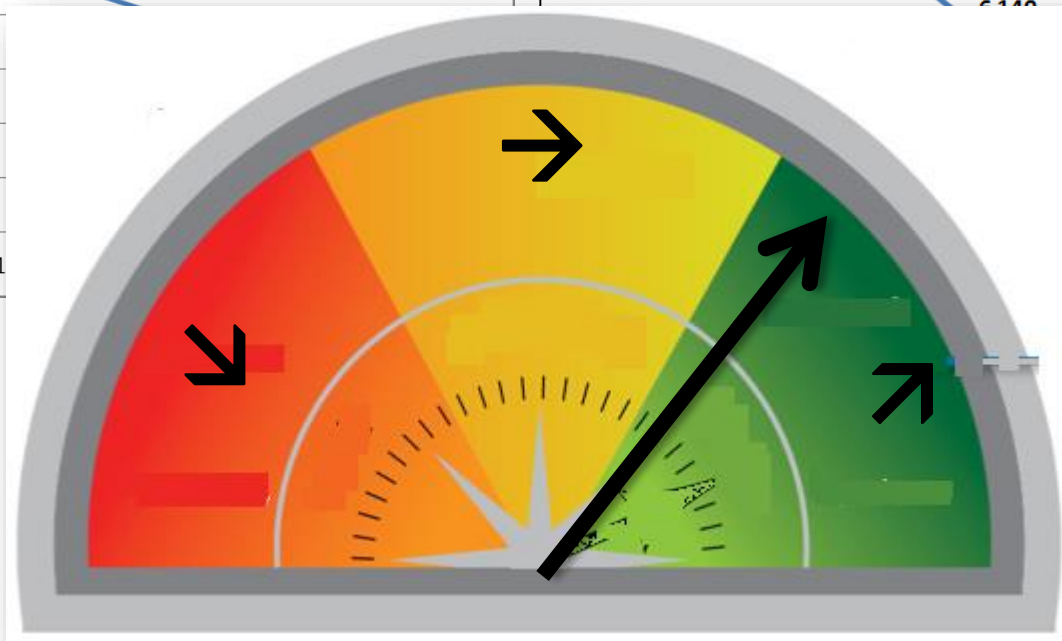
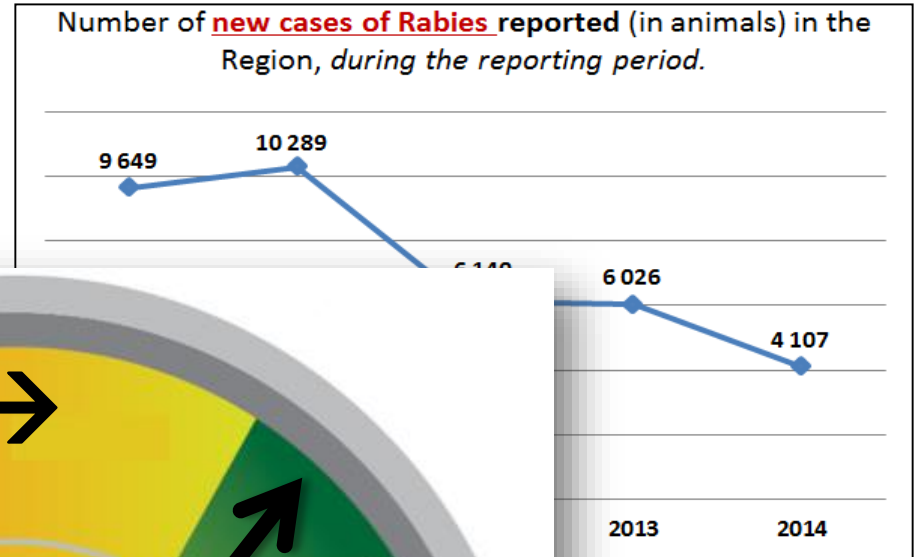
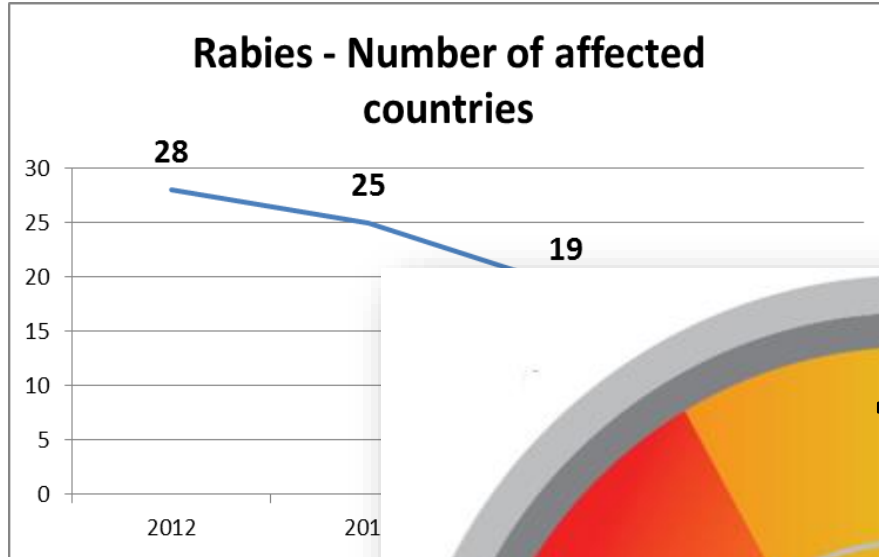
n/a

n/a

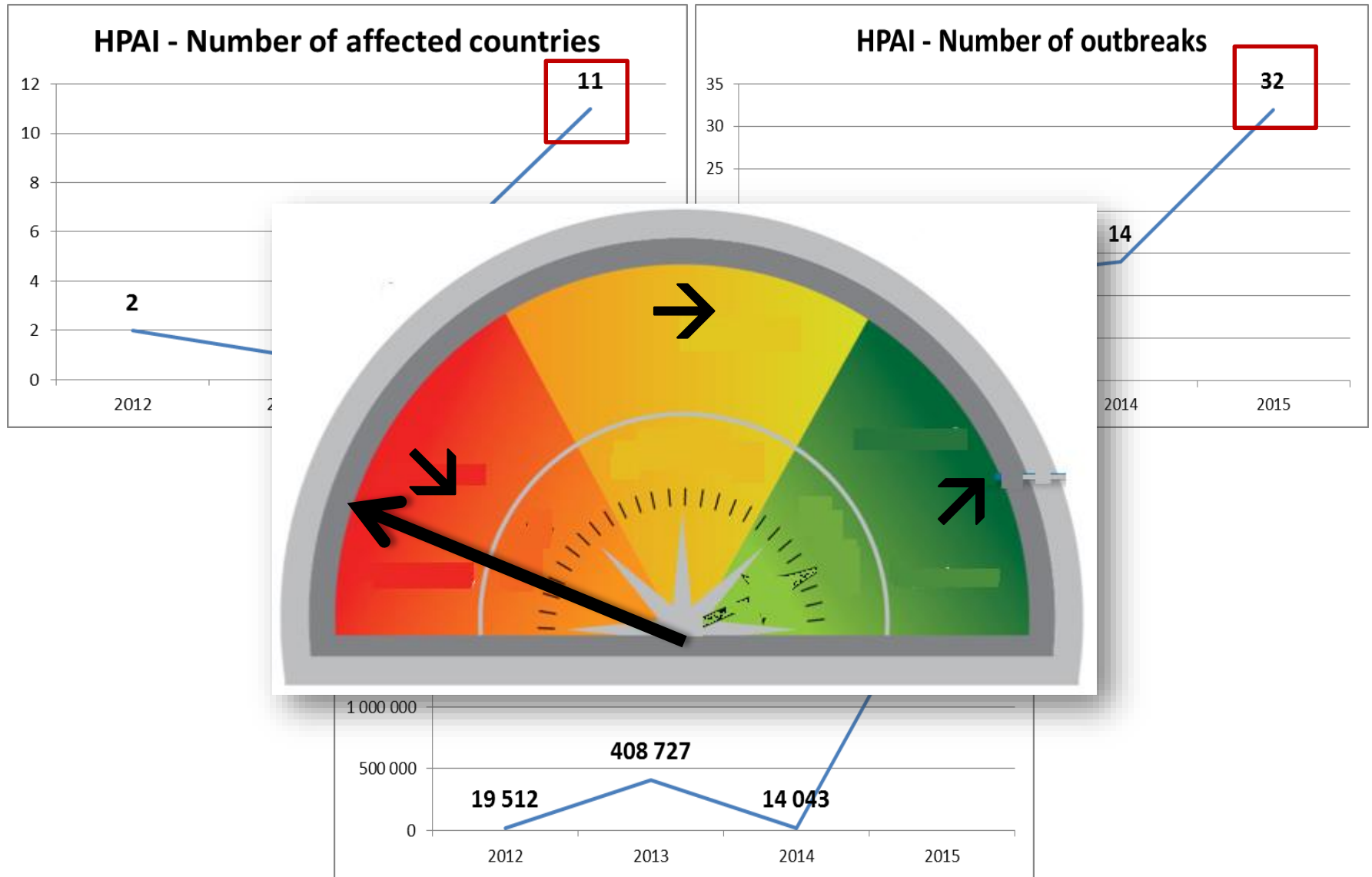
ASF in Europe – indicators and trends



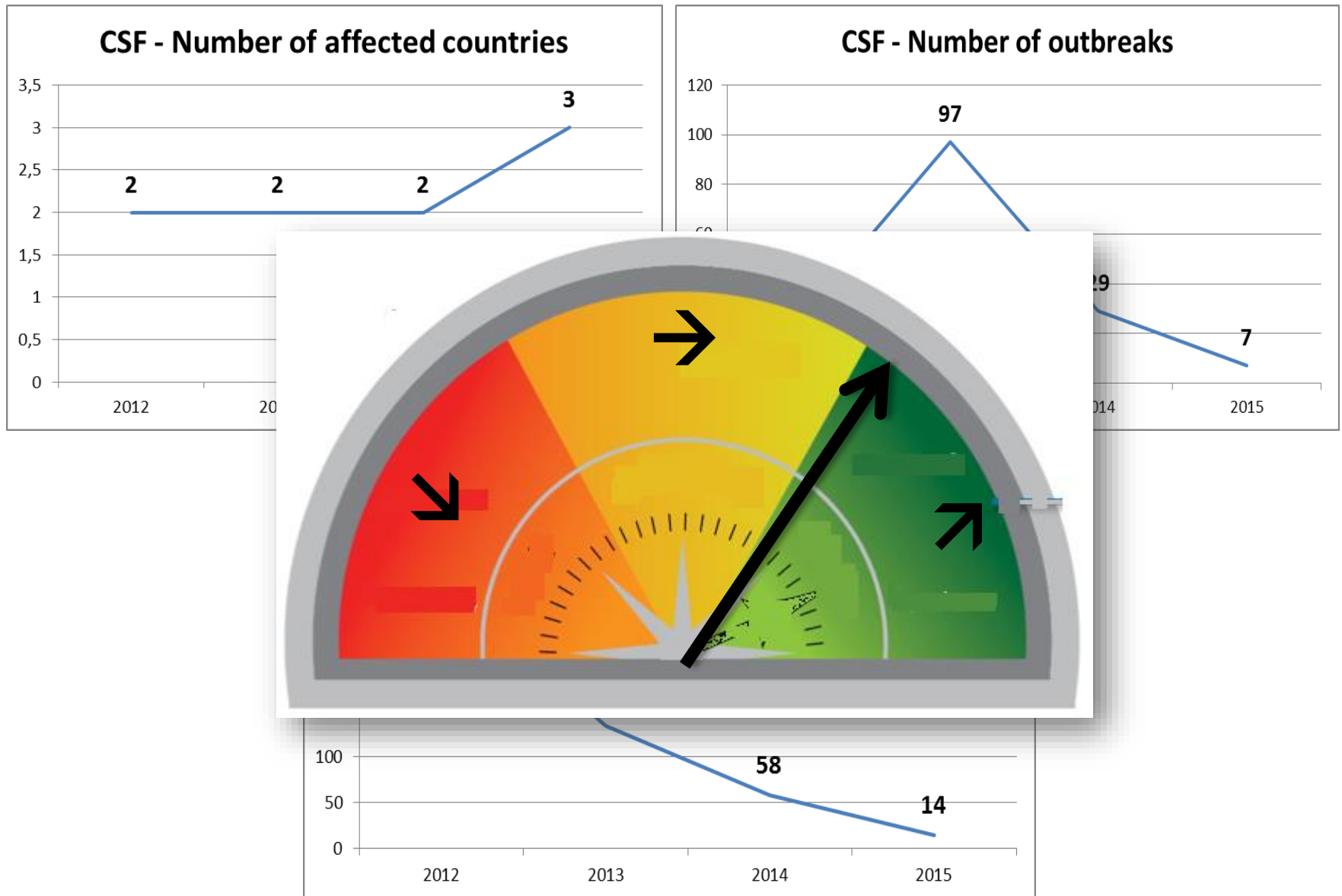
Rabies in Europe – indicators and trends



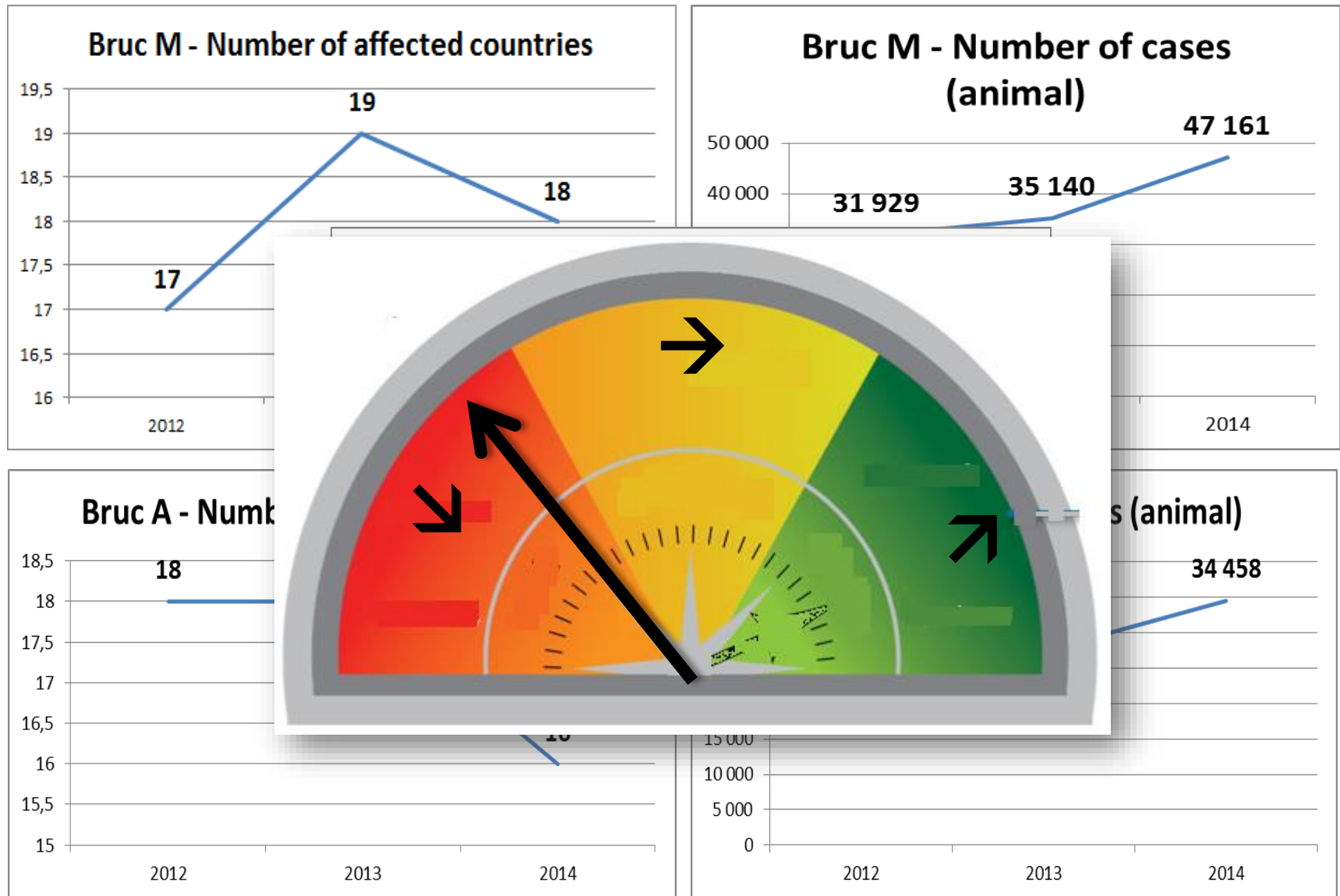
HPAI in Europe - indicators and trends



CSF in Europe – indicators and trends



Brucellosis in Europe – indicators and trends



Animal Health Barometer in Europe

