



Lumpy Skin Disease

Lisbon, Portugal

27th Conference of the OIE Regional Commission for Europe

22 September

**NATIONAL SANITARY VETERINARY AND FOOD SAFETY AUTHORITY
OF ROMANIA**



Romania's Strategy for LSD



- Contingency plan since April 2016;
- Qualitative risk analysis;
- Plan for emergency vaccination (send to EU Commission for evaluation);
- Increased awareness amongst farmers and veterinarians, by trainings and leaflets;
- Desktop simulation exercise for veterinary administration of 12 South, South-East and South-Vest counties, in June 2016;
- Enlarging diagnostic capacity for pox-viruses from 1 to 4 more laboratories.



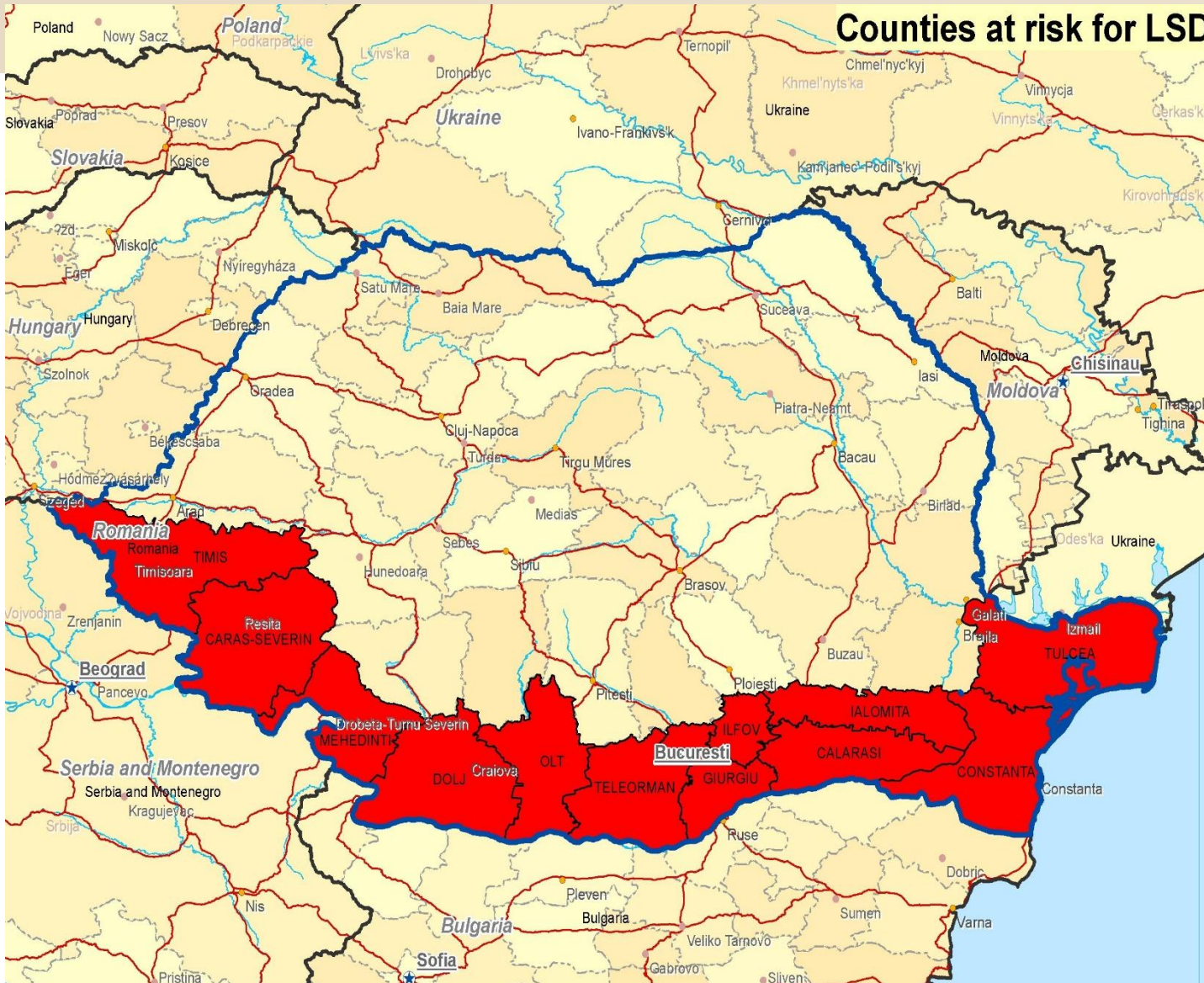
Romania's Strategy for LSD



- The local disease control centers from 12 counties in the South, South-East and South-Vest counties were alerted and requested to analyse the resources, in order to be maintained ready for intervention;
- The counties sanitary veterinary and food safety directorates from the South part of Romania were audited relating to degree of preparedness for intervention;
- Market and fairs were forbidden on long term in those 12 exposed counties.



Counties at risk for LSD





Romania's Vaccination policy



- Romania decided to vaccinate only after the confirmation of first LSD outbreak, with the vaccine allotted by the EU Commission (125000);
- In case of emergency, will be used Government budget available for emergency situations.



Thank you very much for your attention!